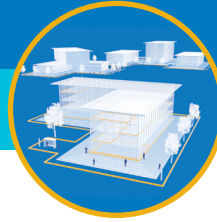


PRODUCT SOLUTIONS BRIEF  
**HIKVISION**

**HIGHER EDUCATION RISK MANAGEMENT**



Through our strong global partnerships and alliances with manufacturers such as Hikvision, we are able to present you with the following offering to meet your specific campus facility requirements.

**DeepinView Dual Lens Facial Recognition Camera iDS-2CD8426G0/F-I**

Hikvision's new iDS-2CD8426G0/F-I Facial Recognition Camera incorporates deep learning algorithms developed by Hikvision to provide instantaneous face capture and comparison to a face database within the camera. Accuracy of the detection is presented to the user and exceeds 90% performance.

It is perfect for protection of entry/exit or any area where accurate identification of subjects is warranted. Applications include transportation, education, healthcare, commercial buildings, corrections, retail and more.



Hikvision's DeepinView Dual Lens Facial Recognition Camera has a built-in learning algorithm with 1920 x 1080p resolution at 30 fps.

**CHALLENGE SOLVERS**

- Face recognition instantly compares captured face picture with those in the saved libraries
- Can configure face-triggered alarms
- H.265 high video compression to save bandwidth and storage costs
- Supports up to five video streams
- IR illuminator range up to 32 ft.
- 120 dB Wide Dynamic Range

**THE ANIXTER APPROACH**

- **Campus Grounds**  
Determine cellular coverage and vulnerable areas around the campus boundary and interior to deter external threats.
- **Building Entrance**  
Effectively manage the zone between the grounds and specific buildings to support positive identification and visitor management.
- **Common Spaces**  
Monitor high-traffic public areas such as cafeterias and auditoriums to anticipate and respond quickly to emergency situations.
- **Academic Areas**  
Implement proactive security measures to limit access to learning and administrative areas, protecting valuable research and technical equipment.
- **Student Housing**  
Manage high-risk, priority environments through access control, fire intrusion, video surveillance and an emergency preparedness plan.
- **Technical Facilities**  
Protect electrical rooms, networking infrastructure, IT servers and data storage in technical areas.

**THE HIKVISION SOLUTION**

**LEARNING ALGORITHMS**

Captures and recognizes faces that are stored in the library

**ALARM TRIGGERS**

Senses motion detection, video tampering, network disconnection, IP address conflict, illegal log-in, HDD full, HDD error

**NETWORK STORAGE**

Supports Micro SD/SDHC/SDXC card (128 G) local storage, NAS (NFS,SMB/CIFS), ANR



**WHAT WE HEAR**

Challenges from the various higher education stakeholders are:



Defining **EMERGENCY PREPAREDNESS** plan



Mitigating impact of **CAMPUS VIOLENCE**



Supporting **SAFE AND SECURE STUDENT LIFE** environments



Developing **PREDICTIVE VS. RESPONSIVE** security strategy



Maintaining **AROUND THE CLOCK SECURITY** levels

**Infrastructure as a Platform**  
by Anixter

Infrastructure as a Platform by Anixter provides a practical, configurable and integrated approach to deploy physical security infrastructure into your campus environment.

## CONFIGURE

We help you discover and map your specific needs to the best solution.

- HikCentral intelligent software
- Transaction software
- Parking management software

## BUNDLE

Your validated, preconfigured solutions are packaged and site ready.

- 360-degree multi-sensor cameras
- Network recorders
- Access control

## DEPLOY

Controlled, repeatable solutions are delivered on time and under budget.

- Custom packaging and labeling
- Time-sensitive delivery options
- Staged project shipping
- Tailored last-mile delivery

## HIKVISION DEEPINVIEW DUAL LENS FACIAL RECOGNITION CAMERA IDS-2CD8426G0/F-I FEATURES

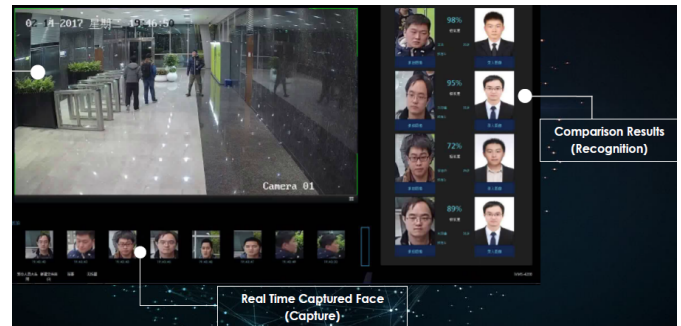
### ✓ LEARNING ALGORITHM

The Remote Security Control (RSC) app allows users to do the following remotely from their devices:

- Turn Face capture automatically selects and outputs face picture
- Face recognition instantly compares the captured face picture with those in the saved database
- Increases accuracy up to 97%

### ✓ ALARM TRIGGERS

- Two-man rule requires two people with two unique passcodes to be present at the time of opening.
- Early ambush allows users to verify that the facility is safe by requiring two passcodes. The control panel sends a duress event if the user does not enter the passcode a second time after inspecting the premises.
- Dual authentication requires two forms of identification before processing certain system commands, including turning off the system and opening doors. A standard system user must have a passcode, a credential (token or card) and appropriate command authority permissions.



The DeepinView Dual Lens Face Recognition Camera captures and recognizes faces that are stored in the library. Pictured above, the bottom row of faces is the live capture, and the right columns show the database recognition.

## > FOR MORE DETAILS VISIT [ANIXTER.COM/SHOPHIKVISION](http://ANIXTER.COM/SHOPHIKVISION)

**About Anixter:** [anixter.com/aboutus](http://anixter.com/aboutus)

**Legal Statement:** [anixter.com/legalstatement](http://anixter.com/legalstatement)

At Anixter, we enable the connected world. By building, connecting, protecting and powering valuable assets and critical infrastructures, we help to sustain and grow businesses and communities worldwide. We accomplish this by offering full-line solutions, technical intelligence, supply chain expertise and an unmatched global distribution network.

1.800.ANIXTER | [anixter.com](http://anixter.com)

