



wesco | anixter

Command and Control Solutions

End-to-end solutions to support
your critical operations.



Ingenuity delivered.



The Command-and-Control Objective

The goal of any command-and-control facility is to enable optimal performance and availability of mission critical resources, ensuring continuous uptime for network, security or other operations. With such vital business needs on the line, identifying the right distribution and integration solution partners is essential for your success.

Your Wesco Anixter professional AV team brings decades of comprehensive knowledge and expertise across all aspects of command-and-control from systems design, hardware and software selection, ergonomics, furniture, console and video wall solutions, as well as selecting the right integration partner for any command-and-control need.

The Wesco Anixter team knows that your most important command-and-control asset is the human operator. Wesco Anixter command-and-control solutions are designed, created and deployed based on this first principle.

Who Is Wesco Anixter

Wesco Anixter builds, connects, powers and protects the world. Delivering ingenuity and expertise to approximately 150,000 customers worldwide, we help your command-and-control operations run smoothly by providing solutions that can increase profitability, improve productivity and mitigate risk. With millions of products and locations in more than 50 countries, Wesco Anixter delivers the command-and-control solutions you need, when and where you need them.

QUICK FACTS



20,000
global employees



50+ countries



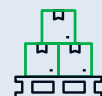
35+ currencies



30+ languages



Approximately
150,000 customers



Millions of products
from 50,000 suppliers

Ingenuity delivered.



Wesco Anixter Professional AV Command-and-Control Solutions

Due to network convergence acceleration (information technology and operations technology networks) and continuing technological networking innovation, the IT professional's realm of responsibility has expanded to include all types of operational elements from lighting and HVAC to physical security (surveillance, alarms, intrusion, access control and more) to professional AV (audio, sound masking, video and the controls to manage it all).



Success Starts With the Right Partnerships

Integrator Partners

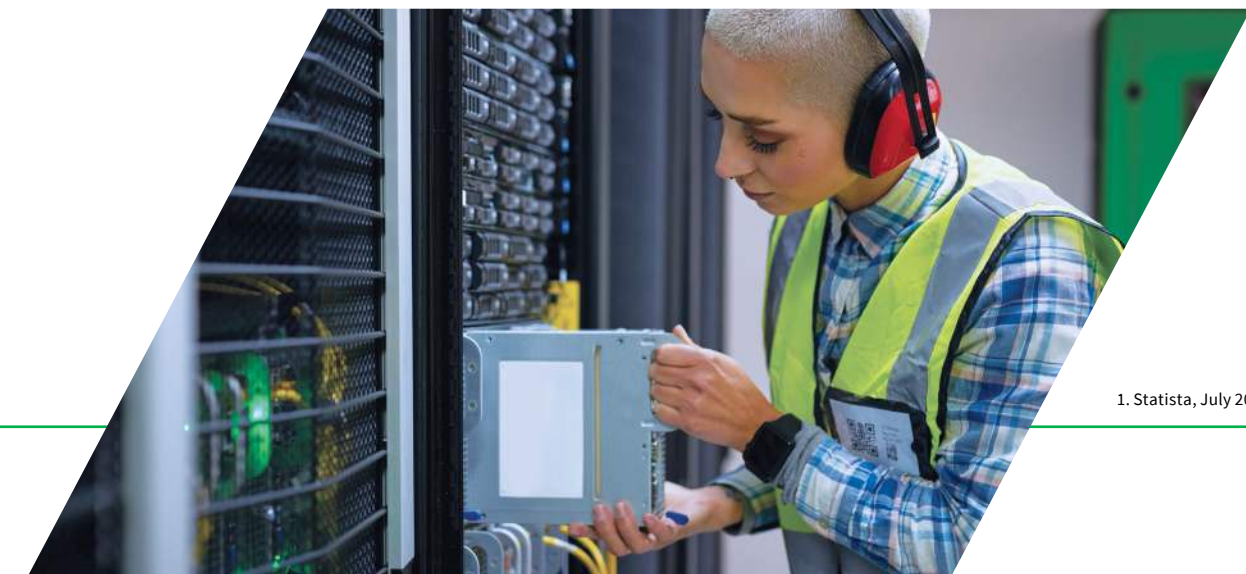
According to Statista, “The number of Internet of Things (IoT) devices worldwide is forecast to almost double from 15.1 billion in 2020 to more than 29 billion IoT devices in 2030.”¹ As the need for data continues to accelerate, the need for commercial enterprise command-and-control solutions will also continue to exponentially increase across the globe.

From an integration channel partner perspective, Wesco Anixter understands the need to conserve working capital, reduce costs, mitigate risk and enhance profitability on every project. From technical specification and design to global supply chain and logistics expertise, we have the capacity and capability that can ensure solution availability and improve your bottom line.

End User Benefits

For end users seeking enterprise-wide command-and-control solutions for both network operations and security operations centres (NOCs and SOCs), partnering with the global Wesco Anixter Pro AV team provides decades of command-and-control expertise as well as expertise with adjacent solutions including data communications, electrical, physical security and professional AV to offer start-to-finish project support.

Whether end users need enterprise-wide solutions for centralised or decentralised facility access, Wesco Anixter and our channel partners can help support consistent and successful project outcomes – on time and on or below budget.



1. Statista, July 2023

Ingenuity delivered.

Command-and-Control: A Deeper Dive

Command-and-control NOCs and SOCs have become vital resources for organisations needing a centralised environment to monitor and maintain network and security operations. Depending on an organisation's needs and goals, a decentralised approach may also be beneficial, as it enables on-site to address specific off-site concerns.

The physical location for a NOC or SOC is typically a room of various devices and workstations, which may include video walls that use specialised software and tools, providing total visibility into the status of a network and easy monitoring for support staff. Core audio and video network surveillance, as well as the cabling and connectivity infrastructure, are key to proactively addressing enterprise issues before they become a problem. Being able to create an audio communications hierarchy — thereby avoiding confusion and cross talk during network incidents — can spell the difference between handling an issue at its inception or having it grow into an enterprise-wide problem.

Other key factors in the effectiveness of operations centres are making sure all operations centre personnel have clear line of sight video access, and the consoles that house them provide high-quality resolution and reliable connectivity. In fact, all operations centre furniture, including chairs and tables, must be ergonomically designed and deployed to allow for maximum comfort and mobility during sometimes hectic and long stretches of time.

The Wesco Anixter pro AV team and its world-class supplier and integration partners provide all the above and so much more from best practices in operations centre design and engineering, to technical advisory services, to pre-provisioning, DOA testing and IP addressing, as well as global logistics and supply chain expertise. When it comes to NOCs and SOCs, Wesco Anixter provides what you need, where you need it, how you need it and when you need it. From small to mid-size to large and complex, we have scalable, consistent command-and-control solutions that have you covered across your enterprise and around the world.

Command-and-Control Facility Types

Depending on the monitoring need and business type, there are various types of physical command-and-control set ups (i.e., how the data is provided), including wall-centric, when physically viewing information is key. Examples include transportation and security operations.



Additionally, there are more desktop-centric environments where proactive information control is needed, including energy pipelines, manufacturing, agriculture, food production and process automation.



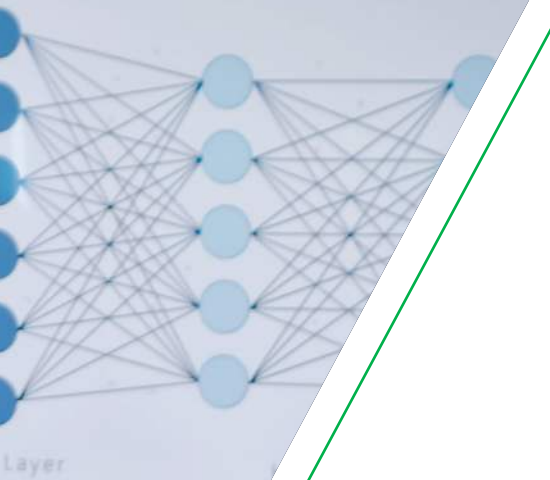
There are also situations where it's a combination of the need to view and proactively control information, for example, in airports and hospitals.

Ingenuity delivered.



Learning

SIMPLE DEEP LEARNING NE



Core Elements

The global Wesco Anixter pro AV team looks at every command-and-control project through the lens of the following core elemental needs:

- Breakout room
- Communications
- Consoles
- Desktop operations
- Facility design – ergonomics and line of sight
- Mobility applications
- Viewing wall and controls (video processors)

A Variety of Applications

The global Wesco Anixter pro AV team and our integration partners know that command-and-control needs exist across a variety of industries. And with decades of experience working in these areas, we have the expertise to predict potential pitfalls and understand how best to avoid them.

- Commercial enterprise and corporate campuses
- Data centres (commercial data centres, multi-tenant data centres (MTDCs), hyper scale data centres)
- Critical infrastructure and utilities (telecom carriers, internet service providers (ISPs), gas and electric, renewables)
- Transportation companies
- Colleges and universities

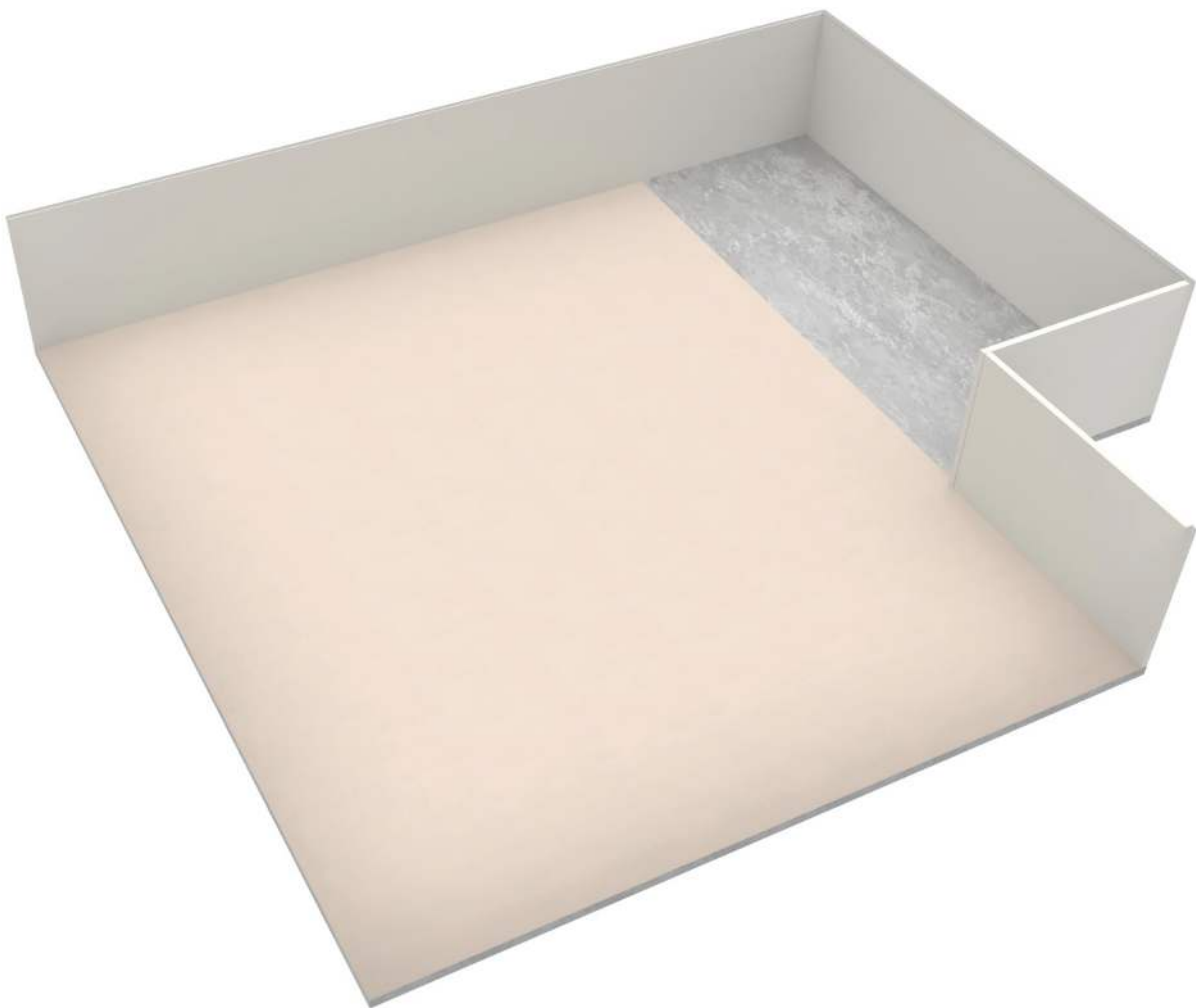
Ingenuity delivered.

Five Steps to Building Your Command-and-Control Centre

Wesco Anixter's certified AV designers use industry best practices when developing command-and-control designs, from concept through completion.

Step 1:

Blank Space/Network or Security Operations Centre



Step 2:

Operator Workstations Add-on

- The empty floorplan can now be divided up into the main command-and-control area, office and conference room.
- Designing a command-and-control space starts with the operator workstations.
- How the operators intend to interact with their workstations, the content they're viewing and the main video wall screens directly influence the operator workstation design and manufacturer.



Ingenuity delivered.

Step 3:

Video Wall/Sources/Control Capabilities

- This will have a large video wall featured in front of the operator workstations.
- One, a few or all workstations can control what is shown on the video wall in real time, whether from outside sources such as live cam feeds, cable TV or screen scraping their workstation monitors.
- While the video wall provides overall high-level views for all operators, desktop monitors allow operators to focus on specific areas of interest or concern.



Step 4: Supplemental Spaces and Rooms

- This shows the conference room and office space being filled out with furniture and integrated into the command-and-control space.
- The content from the main command-and-control space can also be viewed and/or controlled from within these supplementary spaces.



Ingenuity delivered.

Step 5:

Infrastructure and Construction Documentation

- This is the transparent full-blown image showing all data cabling, conduits, connections and all furniture as if it's a completely built out space.
- Building Information Modeling (BIM) provides a command-and-control rendering in 3D like 3D AutoCAD or Revit (i.e., like a CAD drawing, but in 3D).
- When a general contractor is compiling different construction documentation from different disciplines (like HVAC, plumbing and electrical) it is helpful to have 2D and 3D representations of the infrastructure.
- Datacom and AV infrastructure is also important to consider when designing and building out these spaces.
- Wesco Anixter's internal technology support services team has full-time BIM specialists to create and manage 3D models for AV and datacom infrastructure from initial project concept through completion.



World-Class Command-and-Control Manufacturers

The Wesco Anixter pro AV team is proud to work with renowned global command-and-control suppliers including:



When it comes to command-and-control needs within your organisation, be it local, regional, national or global, the Wesco Anixter pro AV team has you covered.

To learn more about Wesco Anixter's pro AV command-and-control solutions, please contact your local Wesco Anixter account manager today.



wesco | anixter

[Wesco.com/emea](https://www.wesco.com/emea)

Wesco Anixter Regional Headquarters

Inspired, Easthampstead Road
Bracknell, Berkshire RG12 1YQ
United Kingdom
+44 (0) 1344 388100

Wesco World Headquarters

225 West Station Square Drive, Suite 700
Pittsburgh, PA 15219, USA

Ingenuity delivered.

240257B003 © 2024 Wesco International
Anixter Limited