



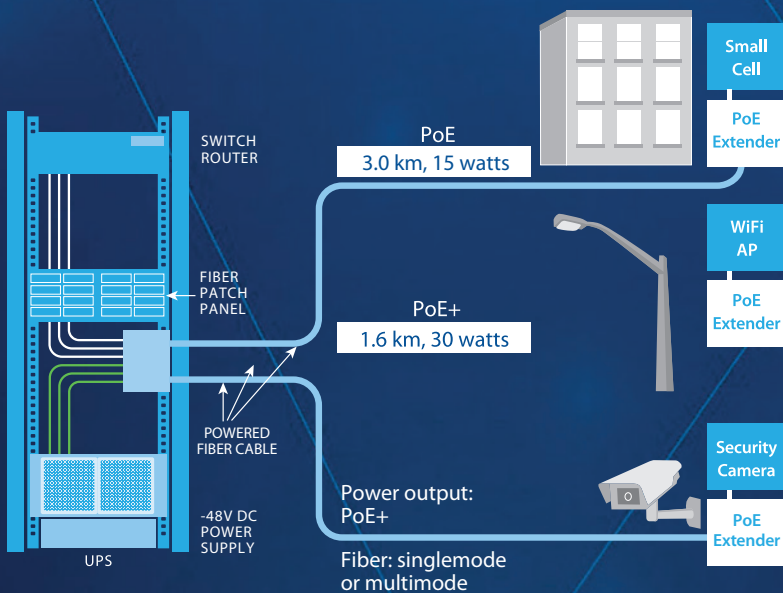
Enterprise Networks

Guía Rápida de Productos
Portafolio Netconnect Perú

ANIXTER

COMMSCOPE[®]
NETCONNECT[®]

Sistema Energizado de Fibra Óptica



Ofrecemos una solución completa "rack al dispositivo" diseñada para conectar equipos IP a distancias mayores a 100m, incluyendo AP Wi-Fi, Cámaras y Micro Celdas, y que puedan ser alimentados a través de un puerto PoE/PoE+. El sistema utiliza un cable híbrido cobre y fibra, y además un Extensor PoE con sellamiento tipo IP67 y nivel de protección ITU-T K.45 que elimina la necesidad del diseño eléctrico calificado, al corregir automáticamente la caída de voltaje a lo largo de la distancia hasta 3 km.

Copper solutions

Categoría 7A S/FTP Products

Category 7A products

Category 7A Shielded Jacks

Description	Product number
Category 7A shielded jack	1711437-1
Category 7A shielded jack, with dust cover	1711441-1



SL Shielded Modular Panels (Jacks not included)



Material ID	Product number	Description
760237046	CPP-SDDM-SL-1U-24	Modular Distribution Module Panel, SL, STP, 1U, 24 port
760237047	CPP-SDDM-SL-2U-48	Modular Distribution Module Panel, SL, STP, 2U, 48 port
760237048	CPPA-SDDM-SL-1U-24	Angled Modular Distribution Module Panel, SL, STP, 1U, 24 port
760237049	CPPA-SDDM-SL-2U-48	Angled Modular Distribution Module Panel, SL, STP, 2U, 48 port
760237050	CPPR-SDDM-SL-1U-24	Recessed Angled Modular Distribution Module Panel, SL, STP, 1U, 24 port
760237051	CPPR-SDDM-SL-2U-48	Recessed Angled Modular Distribution Module Panel, SL, STP, 2U, 48 port

Category 7A S/FTP patch cord

Description	Product number
Patch Cord AMP-TWIST 7A - AMP-TWIST 7A	Y-1711637-X
Patch Cord AMP-TWIST 7A - RJ45 (4 Pairs)	Y-336488-X
Patch Cord AMP-TWIST 7A - RJ 45 (2 Pairs)	Y-1711613-X
Patch Cord AMP-TWIST 7A - RJ11	Y-1711623-X
Patch Cord AMP-TWIST 7A - CATV Type F-Male	Y-1711624-X



y-	-x	Length
0-	-1	1.0 m
1-	-2	1.5 m
0-	-2	2.0 m
0-	-3	3.0 m



Nota: Otras medidas consultar a CommScope®

Category 7A S/FTP cables

Material ID	Description	Color	Length
1499101-1	Category 7A, Copper Cable, 4 pair, simplex, S/FTP, LSFRZH, 22 AWG	White	1000 m reel
1499101-4	Category 7A, Copper Cable, 4 pair, simplex, S/FTP, LSFRZH, 22 AWG	Blue	1000 m reel
1711910-1	Category 7A, Copper Cable, 4 pair, simplex, S/FTP, LSFRZH, 23 AWG	White	1000 m reel
2153161-1	Category 7 OSP Cable, 4-pair, S/FTP, Inner jacket LSZH / Outer jacket PE, 23 AWG	Black	1000 m reel



Copper solutions

Category 6A F/UTP products

Category 6A products



Category 6A F/UTP cables

Material ID	Product number	Description	Color	Length
1859218-2	TE640Z1F-WTM2-AP	640 Series Copper Cable, Category 6A, 4 pair, F/UTP, LSZH, 23 AWG	White	305m reel
1859349-2	TE640RF-WTM2-AP	640 Series Copper Cable, Category 6A, 4 pair, F/UTP, CMR rated, 23 AWG	White	305m reel
1859222-2	TE640MF-WTM2-AP	640 Series Copper Cable, Category 6A, 4 pair, F/UTP, CM rated, 23 AWG	White	305m reel
1859381-2	TE640Z3F-WTM2-AP	640 Series Copper Cable, category 6A, 4 pair, F/UTP, LSFRZH, 23 AWG	White	305m reel

SL Shielded Modular Panels (Jacks not included)



Material ID	Product number	Description
760237046	CPP-SDDM-SL-1U-24	Modular Distribution Module Panel, SL, STP, 1U, 24 port
760237047	CPP-SDDM-SL-2U-48	Modular Distribution Module Panel, SL, STP, 2U, 48 port
760237048	CPPA-SDDM-SL-1U-24	Angled Modular Distribution Module Panel, SL, STP, 1U, 24 port
760237049	CPPA-SDDM-SL-2U-48	Angled Modular Distribution Module Panel, SL, STP, 2U, 48 port
760237050	CPPR-SDDM-SL-1U-24	Recessed Angled Modular Distribution Module Panel, SL, STP, 1U, 24 port
760237051	CPPR-SDDM-SL-2U-48	Recessed Angled Modular Distribution Module Panel, SL, STP, 2U, 48 port

Category 6A Shielded Jacks

Material ID	Description
1711342-2	Category 6A F/UTP jack
1711160-2	Category 6A F/UTP jack, with dust cover
1711343-2	Category 6A F/UTP jack, Side Entry
1711295-2	Category 6A F/UTP jack, Side Entry, with dust cover



Category 6A F/UTP patch cord



Product number	Type	Jacket Color	Cable/Cordage length options	UOM
NPC6ASZDB	LSZH, B Wired	BK OR RD WH YL GY GN BL	05-35 m	M
NPC6ASVDB	CM, B Wired	BK OR RD WH YL GY GN BL	3-100 ft	FT

Ordering Material ID Example:

NPC6ASVDB - GY 007 F

Copper solutions

Category 6A products

Category 6A U/UTP products



Category 6A U/UTP cables

Material ID	Product number	Description	Color	Length
884028704/10	CS44Z3 BLU C6A	CS44Z3 ETL Verified Category 6A Cable, 4 pair, U/UTP, LSZH rated, 23 AWG	Blue	1000 ft reel
884026504/10	CS44Z3 GRY C6A	CS44Z3 ETL Verified Category 6A Cable, 4 pair, U/UTP, LSZH rated, 23 AWG	Gray	1000 ft reel
884036104/10	CS44Z3 WHT C6A	CS44Z3 ETL Verified Category 6A Cable, 4 pair, U/UTP, LSZH rated, 23 AWG	White	1000 ft reel
884031004/10	CS44R BLU C6A	CS44R ETL Verified Category 6A Cable, 4 pair, U/UTP, CMR rated, 23 AWG	Blue	1000 ft reel
884019304/10	CS44R GRY C6A	CS44R ETL Verified Category 6A Cable, 4 pair, U/UTP, CMR rated, 23 AWG	Gray	1000 ft reel
2171013-1	TE640R-BL02	640 Series Copper Cable, Category 6A, 4 pair, U/UTP, CMR rated, 23 AWG	Blue	1000 ft reel
2171013-4	TE640R-GY02	641 Series Copper Cable, Category 6A, 4 pair, U/UTP, CMR rated, 23 AWG	Gray	1000 ft reel
2171013-7	TE640R-WT02	642 Series Copper Cable, Category 6A, 4 pair, U/UTP, CMR rated, 23 AWG	White	1000 ft reel

SL Unshielded C6A, C6 & C5e Panels (Jacks not included)



Material ID	Product number	Description
760237040	CPP-UDDM-SL-1U-24	Modular Distribution Module Panel, SL, UTP, 1U, 24 port
760237041	CPP-UDDM-SL-2U-48	Modular Distribution Module Panel, SL, UTP, 2U, 48 port
760237042	CPPA-UDDM-SL-1U-24	Angled Modular Distribution Module Panel, SL, UTP, 1U, 24 port
760237043	CPPA-UDDM-SL-2U-48	Angled Modular Distribution Module Panel, SL, UTP, 2U, 48 port
760237044	CPPR-UDDM-SL-1U-24	Recessed Angled Modular Distribution Module Panel, SL, UTP, 1U, 24 port
760237045	CPPR-UDDM-SL-2U-48	Recessed Angled Modular Distribution Module Panel, SL, UTP, 2U, 48 port

Category 6A U/UTP patch panels (distribution module based)



Material ID	Product number	Description
760237032	NPP-6A-DM-1U-24	Distribution Module Panel, Cat 6A, UTP, 1U, 24 port
760237033	NPP-6A-DM-2U-48	Distribution Module Panel, Cat 6A, UTP, 2U, 48 port
760237034	NPPA-6A-DM-1U-24	Angled Distribution Module Panel, Cat 6A, UTP, 1U, 24 port
760237035	NPPA-6A-DM-2U-48	Angled Distribution Module Panel, Cat 6A, UTP, 2U, 48 port
760237036	NPPR-6A-DM-1U-24	Recessed Angled Distribution Module Panel, Cat 6A, UTP, 1U, 24 port
760237037	NPPR-6A-DM-2U-48	Recessed Angled Distribution Module Panel, Cat 6A, UTP, 2U, 48 port

Copper solutions

Category 6A U/UTP products

Category 6A products



Category 6A U/UTP Jacks

Material ID	Description	Color
1933476-1	Category 6A U/UTP SL jack	Almond
1933476-2	Category 6A U/UTP SL jack	Black
1933476-4	Category 6A U/UTP SL jack	Gray
1933476-5	Category 6A U/UTP SL jack	Orange
1933476-6	Category 6A U/UTP SL jack	Blue
1933476-7	Category 6A U/UTP SL jack	Red
1933476-8	Category 6A U/UTP SL jack	Yellow
1933476-9	Category 6A U/UTP SL jack	Green
1-1933476-0	Category 6A U/UTP SL jack	Violet
1-1933476-1	Category 6A U/UTP SL jack	Electrical Ivory
1-1933476-3	Category 6A U/UTP SL jack	Alpine White



Patch Cord Category 6A U/UTP

Temporal Product Number	Permanent Product	Description
6645 2 835-XX	NPC6AUVDB-YL ___ F	Cat 6A, U/UTP, CM (PVC), Yellow, Feet
6645 2 825-XX	NPC6AUVDB-BL ___ F	Cat 6A, U/UTP, CM (PVC), Blue, Feet
6645 2 865-XX	NPC6AUVDB-GY ___ F	Cat 6A, U/UTP, CM (PVC), Gray, Feet
6645 2 845-XX	NPC6AUVDB-GN ___ F	Cat 6A, U/UTP, CM (PVC), Green, Feet
6645 2 855-XX	NPC6AUVDB-OR ___ F	Cat 6A, U/UTP, CM (PVC), Orange, Feet
6645 2 815-XX	NPC6AUVDB-RD ___ F	Cat 6A, U/UTP, CM (PVC), Red, Feet
6645 2 805-XX	NPC6AUVDB-WT ___ F	Cat 6A, U/UTP, CM (PVC), White, Feet

Sustituir XX por longitud en pies. Para Longitudes mayor a 9 pies agregar las decenas como prefijo y sustituir XX por las unidades.

Category 6A U/UTP patch cord



Product number	Type	Jacket Color								Cable/Cordage length options	UOM
NPC6AUZDB	LSZH, B Wired	BK	OR	RD	WH	YL	GY	GN	BL	05-35 m	M
NPC6AUVDB	CM, B Wired	BK	OR	RD	WH	YL	GY	GN	BL	3-100 ft	FT

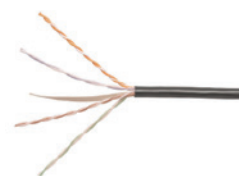
Ordering Material ID Example:

NPC6AUVDB - BL 007 F

Copper solutions

Category 6 products

Category 6 U/UTP products



Category 6 U/UTP cables

Part Number	Material ID	Description	Color	Length
9-1427200-4	884031114/10	CS31R Category 6, Copper Cable, 4 pair, U/UTP, CMR, non-plenum, 23 AWG	Gray	305 m reel in box
1427254-4	884027814/10	CS31CM Category 6, Copper Cable, 4 pair, U/UTP, CM, non-plenum, 23 AWG	Gray	305 m reel in box
219585-2	884032334/32	CS34Z3 Category 6, Copper Cable, 4 pair, U/UTP, LSZH, 23 AWG	White	305 m reel in box
1859345-2	884017814/10	CS31Z3 Category 6, Copper Cable, 4 pair, U/UTP, LSRZH, 23 AWG	White	305 m reel in box

Category 6 U/UTP patch panel (distribution module based)



Material ID	Product number	Description
760237024	NPP-6-DM-1U-24	Distribution Module Panel, Cat 6, UTP, 1U, 24 port
760237025	NPP-6-DM-2U-48	Distribution Module Panel, Cat 6, UTP, 2U, 48 port
760237026	NPPA-6-DM-1U-24	Angled Distribution Module Panel, Cat 6, UTP, 1U, 24 port
760237027	NPPA-6-DM-2U-48	Angled Distribution Module Panel, Cat 6, UTP, 2U, 48 port
760237028	NPPR-6-DM-1U-24	Recessed Angled Distribution Module Panel, Cat 6, UTP, 1U, 24 port
760237029	NPPR-6-DM-2U-48	Recessed Angled Distribution Module Panel, Cat 6, UTP, 2U, 48 port
760237052	CPP-UDDM-KJ-1U-24	Modular Distribution Module Panel, KJ, UTP, 1U, 24 port (Jacks not included)



Category 6 U/UTP Jacks

Material ID SL Series	Description	Color
1375055-1	Category 6 UTP jack	Almond
1375055-2	Category 6 UTP jack	Black
1375055-4	Category 6 UTP jack	Gray
1375055-5	Category 6 UTP jack	Orange
1375055-6	Category 6 UTP jack	Blue
1375055-7	Category 6 UTP jack	Red
1375055-8	Category 6 UTP jack	Yellow
1375055-9	Category 6 UTP jack	Green
1-1375055-0	Category 6 UTP jack	Violet
1-1375055-1	Category 6 UTP jack	Electrical Ivory
1-1375055-3	Category 6 UTP jack	Alpine White
9-1375055-2	Category 6 UTP jack (Bag 24)	Black

Copper solutions

Category 6 products

Category 6 U/UTP products

Category 6 U/UTP patch cord



Product number	Type	Jacket Color								Cable/Cordage length options	UOM
NPC06UZDB	LSZH, B Wired	BK	OR	RD	WH	YL	GY	GN	BL	05-35 m	M
NPC06UVDB	CM, B Wired	BK	OR	RD	WH	YL	GY	GN	BL	1-100 ft	FT

Ordering Material ID Example:

NPC06UVDB - BL 007 F

OSP Patch Cord, CM-LS, UL 444 (UV resistant), Temp: -40C to +60C

Material ID	Description
CO11152-01	CommScope Cat 6, F/UTP, Outdoor Rated Patch Cord
CO15542-01	CommScope Cat 6, U/UTP, Outdoor Rated Patch Cord
CO11192-01	CommScope Cat 6A, F/UTP, Outdoor Rated Patch Cord
CO15582-01	CommScope Cat 6A, U/UTP, Outdoor Rated Patch Cord



* Disponible desde 5ft hasta a 300ft en incrementos de 5ft

Category 6A products

Reduced Diameter Category 6A Patch Cords

Description	Product number
Patch Cord Cat 6A S/FTP, LSZH, 30AWG, 4.5mm, Yellow	1859832-X
Patch Cord Cat 6A S/FTP, LSZH, 30AWG, 4.5mm, Green	1859833-X
Patch Cord Cat 6A S/FTP, LSZH, 30AWG, 4.5mm, Blue	1859834-X
Patch Cord Cat 6A S/FTP, LSZH, 30AWG, 4.5mm, Orange	1859835-X



Tool and Accessories

Modular Jack Termination Tool and Accessories

Material ID	Description
1725150-1	SL Series Modular Jack Termination Tool With Lacing Fixture
1725150-3	SL Series Modular Jack Termination Tool, No Lacing Fixture
1673956-1	Replacement Lacing Fixture



Copper solutions

Category 5e products

Category 5e U/UTP products



Category 5e U/UTP Jacks

Material ID	Description	Color
1375191-1	Category 5e UTP jack	Almond
1375191-2	Category 5e UTP jack	Black
1375191-4	Category 5e UTP jack	Gray
1375191-5	Category 5e UTP jack	Orange
1375191-6	Category 5e UTP jack	Blue
1375191-7	Category 5e UTP jack	Red
1375191-8	Category 5e UTP jack	Yellow
1375191-9	Category 5e UTP jack	Green
1-1375191-0	Category 5e UTP jack	Violet
1-1375191-1	Category 5e UTP jack	Electrical Ivory
1-1375191-3	Category 5e UTP jack	Alpine White
9-1375191-2	Category 5e UTP jack (Bag 24)	Black

Category 5e SL U/UTP patch panel (distribution module based)



Material ID	Product number	Description
760180000	CPP-5E-DM-1U-24	Distribution Module Panel, Cat 5E, 1U, 24 port
760180018	CPP-5E-DM-2U-48	Distribution Module Panel, Cat 5E, 2U, 48 port
760180026	CPPA-5E-DM-1U-24	Angled Distribution Module Panel, Cat 5E, 1U, 24 port
760180034	CPPA-5E-DM-2U-48	Angled Distribution Panel, Cat 5E, 2U, 48 port
760237022	CPPR-5E-DM-1U-24	Recessed Angled Distribution Module Panel, Cat 5E, UTP, 1U, 24 port
760237023	CPPR-5E-DM-2U-48	Recessed Angled Distribution Module Panel, Cat 5E, UTP, 2U, 48 port
760237052	CPP-UDDM-KJ-1U-24	Modular Distribution Module Panel, KJ, UTP, 1U, 24 port (Jacks not included)

Category 5e U/UTP patch cord

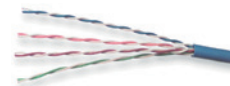


Product number	Type	Color								Cable/Cordage length options	UOM
		BK	OR	RD	WH	YL	GY	GN	BL		
CO5E-U-Z	LSZH, B Wired	BK	OR	RD	WH	YL	GY	GN	BL	05-35 m	M
CO5E-U-CM	CM, B Wired	BK	OR	RD	WH	YL	GY	GN	BL	1-100 ft	FT

Ordering Material ID Example:

CO5E-U-CM - BL 007 F

Category 5e U/UTP cables



Part Number	Description Code	Description	Color	Length
6-219590-6	TE510M-BLMI-AP	510 Series Copper Cable, Category 5e, 4 pair, U/UTP, CM rated, 24 AWG	Blue	305 m reelex
6-219590-4	TE510M-GYMI-AP	510 Series Copper Cable, Category 5e, 4 pair, U/UTP, CM rated, 24 AWG	Gray	305 m reelex

Accessories

Faceplates SL Series & E Series

Description	Product number
Faceplate SL Series, Angled, 4 ports	406185-X
Faceplate SL Series, Angled, 2 portss	1375155-X
Faceplate SL Series, 2 ports No Label	2111022-X
Faceplate SL Series, 4 ports No Label	2111024-X
Faceplate SL Series, 2 ports with Icons & Labels	2111009-X
Faceplate SL Series, 4 ports with Icons & Labels	2111011-X
Faceplate SL Series, 4 ports Horizontal with Icons & Labels	2111203-X
Blank Insert SL Series	1116412-X
Faceplate E Series 2 ports, No label	2111050-X
Faceplate E Series, 4 ports, No Label	2111052-X
Blank Insert E Series	2111486-X



Substituir la X por el color:
 -1 Almendra -2 Negro, 1- -3 Blanco,
 -4 Gris. La Serie SL acepta Jacks
 blindados y no blindados Serie SL, e
 Insertos Multimedia Serie SL. La Serie E
 acepta Jacks e Insertos tipo "keystone"
 IEC 603-7 variante 3 de 0.760"

CCA Connectors

CCA Connector Description	MID
Connector & C6 Pigtail, LSZH, Black, 18"	760235585
Connector & C6 Pigtail, Plenum, Black, 18"	760235587
Connector & C6a Pigtail, LSZH, Black, 18"	760235589
Connector & C6a Pigtail, Plenum, Black, 18"	760235591
Connector Only	760234921



MP-ColorClip for NPC & CO5e Patch Cords



MID	Color (Pkg 50)
2843022-1	Almond
2843022-2	Black
2843022-3	White
2843022-4	Gray
2843022-5	Orange
2843022-6	Blue
2843022-7	Red
2843022-8	Yellow
2843022-9	Green

Length Options for NPC and CO5e patch cords

LSZH (Z) Patch Cords	
Length (M)	Increments
0.5 – 3	50 cm.
3 – 10	1 m.
10 – 20	2 m.
20 – 35	5 m.

CM (V) Patch Cords	
Length (ft)	Increments
1 – 20	1 ft.
20 – 50	5 ft.
50 – 100	10 ft.



Category 5e Cables

Material ID	Description	Color	Length
8840905/10	CommScope Category 5e U/UTP 2001 Solid Cable, CMR, 4pr, 24 AWG	Gray	1000 ft reel
8840805/10	CommScope Category 5e U/UTP 2002 Flexible Cable, CMR, 4pr, 24 AWG	Gray	1000 ft reel
8840305/10	CommScope Category 5e F/UTP 2003 Solid Cable, CMR, 4pr, 24 AWG	Gray	1000 ft reel
4687406/10	CommScope Category 5e F/UTP 2004 Flexible Cable, CMR, 24 AWG	Gray	1000 ft reel
1499447-3	ETHERSEAL® Category 5e, U/UTP, Solid Cable, 4pr, 24 AWG, CMR	Gray	1000 ft reel
1499448-3	ETHERSEAL® Category 5e, U/UTP, Stranded Cable, , 4pr, 24 AWG, CMR	Gray	1000 ft reel
1499449-3	ETHERSEAL® Category 5e, F/UTP, Solid Cable, 4pr, 24 AWG, CMR	Gray	1000 ft reel

Modular Jack Outlet Kits & Accessories

Material ID	Description
1933589-2	Industrial Category 6A AMP-TWIST Shielded Outlet
1479566-2	Industrial SL Category 6 Shielded Outlet
1479565-2	Industrial SL Category 6 Unshielded Outlet
1479564-2	Industrial SL Category 5e Shielded Outlet
1479563-2	Industrial SL Category 5e Unshielded Outlet
1479861-1	Positive Latching Modular Jack Cap
1479591-2	Modular Jack Cap



Category 5e Patch Cord

Material ID	Description
1479602-7	ETHERSEAL® RJ45 Patch Cord, Category 5e, ES plug to NES plug, U/UTP, 7 ft
1479604-7	ETHERSEAL® RJ45 Patch Cord, Category 5e, ES plug to NES plug, F/UTP, 7 ft
1-1479604-0	ETHERSEAL® RJ45 Patch Cord, Category 5e, ES plug to NES plug, F/UTP, 10 ft
1-1479602-0	ETHERSEAL® RJ45 Patch Cord, Category 5e, ES plug to NES plug, U/UTP, 10 ft



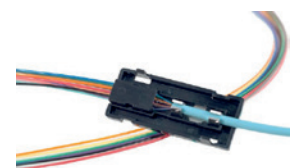
Faceplate & Enclosures

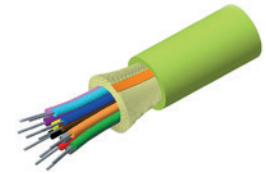
Material ID	Description
1479593-2	ETHERSEAL® Faceplate, stainless steel, 1-gang, 1-port, with gasket
1479594-2	ETHERSEAL® Faceplate, stainless steel, 1-gang, 2-port, with gasket
1479656-1	ETHERSEAL® Enclosure, I/O: 2 ES, 2 M16 cable, 1 M32 conduit
1479658-1	ETHERSEAL® Gland Kit, M32 (3/4"), front mount, black
1479657-1	ETHERSEAL® Gland Kit, M16 (Cable), front mount, black

Description	Fiber Type	Fiber Count	MID Code	Product number
Indoor/Outdoor LSZH-3 Riser Distribution Cable	OM3	6	760039966	Z-006-DS-5L-FSUBK
		12	700210982	Z-012-DS-5L-FSUBK
		24	760070292	Z-024-DS-5L-FSUBK
	OM4	6	760039974	Z-006-DS-5K-FSUBK
		12	760006650	Z-012-DS-5K-FSUBK
		24	760070300	Z-024-DS-5K-FSUBK
	OS2	6	760009753	Z-006-DS-8W-FSUBK
		12	760004184	Z-012-DS-8W-FSUBK
		24	760070276	Z-024-DS-8W-FSUBK
Indoor/Outdoor LSZH-3 Riser Rated HTS e-glass rodent resistance, Gel-Filled, Stranded Loose Tube, Arid Core® Cable	OM3	6	760146878	Z-006-LN-5L-F06BK/20G/HTS
		12	760103606	Z-012-LN-5L-F12BK/20G/HTS
	OM4	12	760103382	Z-012-LN-5K-F12BK/20G/HTS
		24	760151704	Z-024-LN-5K-F12BK/20G/HTS
	OS2	12	760100727	Z-012-LN-8W-F12BK/20G/HTS
		24	760100735	Z-024-LN-8W-F12BK/20G/HTS
Indoor/Outdoor, Corrugated Steel Armor, LSZH-3 Riser Rated, Gel-Filled, Stranded Loose Tube Cable	OM3	6	760130237	Z-006-LA-5L-F06BK/20G
		12	760122085	Z-012-LA-5L-F12BK/20G
		24	760130245	Z-024-LA-5L-F12BK/20G
	OM4	6	760146720	Z-006-LA-5K-F06BK/20G
		12	760146738	Z-012-LA-5K-F12BK/20G
		24	760146746	Z-024-LA-5K-F12BK/20G
	OS2	6	760146787	Z-006-LA-8W-F06BK/20G
		12	760122028	Z-012-LA-8W-F12BK/20G
		24	760122036	Z-024-LA-8W-F12BK/20G
Corrugated Steel Armor, Gel-Free, Outdoor Loose Tube Cable	OM3	6	760053611	D-006-LA-5L-F06NS
		12	760053629	D-012-LA-5L-F12NS
		24	760053637	D-024-LA-5L-F12NS
	OM4	6	760053728	D-006-LA-5K-F06NS
		12	760053736	D-012-LA-5K-F12NS
		24	760053744	D-024-LA-5K-F12NS
	OS2	6	760053272	D-006-LA-8W-F06NS
		12	760053280	D-012-LA-8W-F12NS
		24	760053298	D-024-LA-8W-F12NS
Premises LSZH-3 Riser Distribution Cable	OM5	6	760231563	N-006-DS-5G-FSULM
Corrugated Steel Armor, Gel-Free, Outdoor Loose Tube Cable		12	760231589	N-012-DS-5G-FSULM
		24	760231597	N-024-DS-5G-FSULM
		24	760237601	D-024-LA-5G-F12NS

Fiber Breakout Kit

Description	Product number
Splitter kit, 6 Fiber, Central Loose Tube	1435020-1
Splitter kit, 12 Fiber, Central Loose Tube	1435021-1

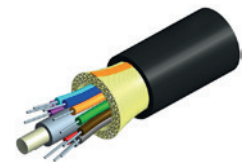




Premises LSZH-3 Riser Distribution Cable

Fiber Count	Product number	Outer Diameter		Weight		Minimum Bend Radius				Max. Tensile Load			
						Loaded		Unloaded		Short Term		Long Term	
		inch	mm	lbs/kft	kg/km	inch	cm	inch	cm	lbs	N	lbs	N
2	N-002-DS...	0,15	3,7	7,8	11,6	2,2	5,6	1,5	3,7	150	667	45	200
4	N-004-DS...	0,18	4,6	14,3	21,3	2,7	7	1,8	4,6	150	667	45	200
6	N-006-DS...	0,2	5,1	16,4	24,5	3	7,6	2	5,1	150	667	45	200
8	N-008-DS...	0,22	5,6	19,1	28,4	3,3	8,4	2,2	5,6	150	667	45	200
12	N-012-DS...	0,24	6,1	23	34,2	3,6	9,1	2,4	6,1	150	667	45	200
18	N-018-DS...	0,31	7,8	36,2	53,9	4,6	11,8	3,1	7,8	300	1.335	90	400
24	N-024-DS...	0,34	8,6	44,4	66	5,1	13	3,4	8,6	300	1.335	90	400

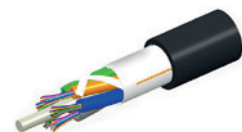
Crush Resistance: >57 lbf/in (>10 N/mm)
 Maximum Vertical Rise: 1,640 ft (500 m)
 Operating Temperature -20°C to +70°C



Indoor/Outdoor LSZH-3 Riser Distribution Cable

Fiber Count	Product number	Outer Diameter		Weight		Minimum Bend Radius				Max. Tensile Load			
						Loaded		Unloaded		Short Term		Long Term	
		inch	mm	lbs/kft	kg/km	inch	cm	inch	cm	lbs	N	lbs	N
2	Z-002-DS...BK	0,15	3,8	8	11,6	3	8	1,5	3,8	225	1.001	68	300
4	Z-004-DS...BK	0,2	5,1	13,5	20,1	4	10,1	2	5,1	300	1.335	90	400
6	Z-006-DS...BK	0,22	5,5	17,6	26,3	4,4	11,1	2,2	5,5	300	1.335	90	400
8	Z-008-DS...BK	0,25	6,3	23,7	35,3	5	12,6	2,5	6,3	300	1.335	90	400
12	Z-012-DS...BK	0,28	7,2	32,6	48,6	5,6	14,2	2,8	7,1	400	1.780	120	534
18	Z-018-DS...BK	0,31	7,9	37	55	6,2	15,7	3,1	7,9	300	1.335	90	400
24	Z-024-DS...BK	0,34	8,7	45,2	67,3	6,8	17,4	3,4	8,7	300	1.335	90	400

Crush Resistance: >126 lbf/in (>22 N/mm)
 Maximum Vertical Rise: 1,640 ft (500 m)
 Operating Temperature -40°C to +70°C

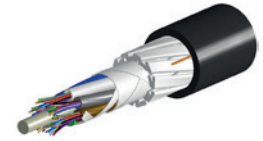


Indoor/Outdoor LSZH-3 Riser Rated, Gel-Free, Stranded Loose Tube, Arid Core® Cable

Fiber Count	Product number	Outer Diameter		Weight		Minimum Bend Radius				Max. Tensile Load			
						Loaded		Unloaded		Short Term		Long Term	
		inch	mm	lbs/kft	kg/km	inch	cm	inch	cm	lbs	N	lbs	N
2 - 60	Z-0XX-LN...BK/25D	0,46	11,7	82	122	6,9	17,6	4,6	11,7	607	2.700	180	800

Crush Resistance: >125 lbf/in (>22 N/mm)
 Maximum Vertical Rise: 2,195 ft (669 m)
 Operating Temperature -40°C to +70°C

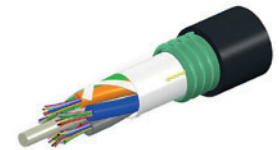
Indoor/Outdoor LSZH-3 Riser Rated HTS e-glass rodent resistance, Gel-Filled, Stranded Loose Tube, Arid Core® Cable



Fiber Count	Product number	Outer Diameter		Weight		Minimum Bend Radius				Max. Tensile Load			
						Loaded		Unloaded		Short Term		Long Term	
		inch	mm	lbs/kft	kg/km	inch	cm	inch	cm	lbs	N	lbs	N
2 - 72	Z-0XX-LN...BK/20G/HTS	0,51	12,8	112	167	7,6	19,3	5,1	12,8	1000	4.448	300	1334

Crush Resistance: >125 lbf/in (>22 N/mm)
 Maximum Vertical Rise: 2,676 ft (816 m)
 Operating Temperature -40°C to +70°C

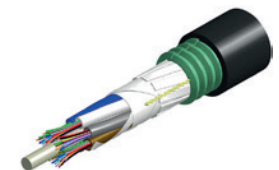
Indoor/Outdoor, Corrugated Steel Armor, LSZH-3 Riser Rated, Gel-Filled, Stranded Loose Tube Cable



Fiber Count	Product number	Outer Diameter		Weight		Minimum Bend Radius				Max. Tensile Load			
						Loaded		Unloaded		Short Term		Long Term	
		inch	mm	lbs/kft	kg/km	inch	cm	inch	cm	lbs	N	lbs	N
2 - 60	Z-0XX-LA...BK/25D	0,51	13,0	119	177	7,7	19,5	13,0	5,1	607	2.700	180	800

Crush Resistance: >250 lbf/in (>44 N/mm)
 Maximum Vertical Rise: 1,512 ft (461 m)
 Operating Temperature -40°C to +70°C

Indoor/Outdoor, Corrugated Steel Armor, LSZH-3 Riser Rated, Gel-Free, Stranded Loose Tube Cable



Fiber Count	Product number	Outer Diameter		Weight		Minimum Bend Radius				Max. Tensile Load			
						Loaded		Unloaded		Short Term		Long Term	
		inch	mm	lbs/kft	kg/km	inch	cm	inch	cm	lbs	N	lbs	N
2 - 72	Z-0XX-LA...BK/20G	0,49	12,4	123	184	7,3	18,5	12,4	4,9	607	2.700	180	800

Crush Resistance: >250 lbf/in (>44 N/mm)
 Maximum Vertical Rise: 1,462 ft (445 m)
 Operating Temperature -40°C to +70°C

Corrugated Steel Armor, Gel-Free, Outdoor Loose Tube Cable, PE



Fiber Count	Product number	Outer Diameter		Weight		Minimum Bend Radius				Max. Tensile Load			
						Loaded		Unloaded		Short Term		Long Term	
		inch	mm	lbs/kft	kg/km	inch	cm	inch	cm	lbs	N	lbs	N
2 - 60	D-0XX-LA...NS	0,45	11,5	74	110	6,8	17,3	4,5	11,5	607	2.700	180	800

Crush Resistance: >250 lbf/in (>44 N/mm)
 Maximum Vertical Rise: 2,429 ft (740 m)
 Operating Temperature -40°C to +70°C



Fiber optic panels

Material ID	Product number	Description
760231449	SD-1U	SD 1U sliding fiber panel, accepts (3) SD splice cassettes, Netconnect Snap-In adapter panels, providing up to 36 duplex LC ports or up to 24 MPO ports
760231456	SD-2U	SD 2U sliding fiber panel, accepts (6) SD splice cassettes, Netconnect Snap-In adapter panels, providing up to 72 duplex LC ports or up to 48 MPO ports
760231464	SD-4U	SD 4U sliding fiber panel, accepts (12) SD splice cassettes, Netconnect Snap-In adapter panels, providing up to 144 duplex LC ports or up to 96 MPO ports
760231472	SD-1U-FX	SD 1U fixed fiber panel, accepts (3) SD splice cassettes, Netconnect Snap-In adapter panels, providing up to 36 duplex LC ports or up to 24 MPO ports
760231480	SD-2U-FX	SD 2U fixed fiber panel, accepts (6) SD splice cassettes, Netconnect Snap-In adapter panels, providing up to 72 duplex LC ports or up to 48 MPO ports
760231498	SD-4U-FX	SD 4U fixed fiber panel, accepts (12) SD splice cassettes, Netconnect Snap-In adapter panels, providing up to 144 duplex LC ports or up to 96 MPO ports
760185595	Kit, Fiber DRUM	Fiber Drums Kit for 1U and 2U Shelves



Splice cassettes

Material ID	Product number	Description
760221739	PNL-CS-12LCX-PT	Splicing cassette, 12 LC LazrSPEED®, 900µm
760221697	PNL-CS-24LCX-PT	Splicing cassette, 24 LC LazrSPEED®, 900µm
760221770	PNL-CS-12SCX-PT	Splicing cassette, 12 SC LazrSPEED®, 900µm
760221747	PNL-CS-12LCW-PT	Splicing cassette, 12 LC TeraSPEED®, 900µm
760221705	PNL-CS-24LCW-PT	Splicing cassette, 24 LC TeraSPEED®, 900µm
760221788	PNL-CS-12SCW-PT	Splicing cassette, 12 SC TeraSPEED®, 900µm
760236500	PNL-CS-12LCX	Splicing cassette, 12 LC LazrSPEED®, no pigtail
760236501	PNL-CS-12LCW	Splicing cassette, 12 LC TeraSPEED®, no pigtail
760236502	PNL-CS-12LAW	Splicing cassette, 12 LC APC TeraSPEED®, no pigtail
760236503	PNL-CS-24LCX	Splicing cassette, 24 LC LazrSPEED®, no pigtail
760236504	PNL-CS-24LCW	Splicing cassette, 24 LC TeraSPEED®, no pigtail
760236505	PNL-CS-24LAW	Splicing cassette, 24 LC APC TeraSPEED®, no pigtail
760236506	PNL-CS-12SCX	Splicing cassette, 12 SC LazrSPEED®, no pigtail
760236507	PNL-CS-12SCW	Splicing cassette, 12 SC TeraSPEED®, no pigtail
760236508	PNL-CS-12SAW	Splicing cassette, 12 SC APC TeraSPEED®, no pigtail



Adapter panels for Fiber Optic Panels

Description	Product number	
	Snap-in	Quik-Fit
3 ports (6f) Duplex SC OM3/OM4	559558-6	NA
6 ports (12f) Duplex SC OM3/OM4	559596-6	1671201-3
6 ports (12f) Duplex SC Singlemode	559596-2	1671201-1
6 ports (12f) Duplex LC OM3/OM4	1374463-5	1671196-3
6 ports (12f) Duplex LC Singlemode	1374463-1	1671196-1
6 ports (24f) Quad LC OM3/OM4	1364400	1671202-3
6 ports (24f) Quad Singlemode	1386682	1671201-1
Blank Module Snap-in	559523-1	NA
Blank Module Quik-Fit	NA	1479698-1

Los módulos Quik-Fit son compatibles con la plataforma UCP



Fiber Optic Panel UCP

Description	Product number
Recessed angled fiber optic panel 1U (Europe) Modular for 4 Quik-Fit adapters or cassettes	1-1671260-1
Cable management kit with glands	1671273-1
Fan-Out MPO Bracket	1671701-2



Cassettes MPO Quik-Fit

Description	Fiber Type	Product number	
		Pairs straight	Pairs flipped
1 x MPOptimate to	6 Ports LC Duplex OM3	1671226-3	1-1671226-3
1 x MPOptimate to	6 Ports LC Duplex OM4	1671226-5	1-1671226-5
1 x MPOptimate to	12 Ports LC Duplex OM3	1671227-3	1-1671227-3
1 x MPOptimate to	12 Ports LC Duplex OM4	1671227-5	1-1671227-5
1 x MPO to	6 Ports LC Duplex OM3	1671205-3	1-1671205-3
2 x MPO to	6 x LC Quad OM3	1671206-3	1-1671206-3
1 x MPO to	6 x LC Duplex SM	1671205-4	1-1671205-4
1 x MPO to	6 x LC APC Duplex SM	1671205-6	1-1671205-6
2 x MPO to	6 x LC Quad SM	1671206-4	1-1671206-4
2 x MPO to	6 x LC APC Quad SM	1671206-6	1-1671206-6

Fiber solutions

MPO trunk configurator

MPO Trunk Cables



MPO

Description	Product number
12 Fiber; OM3 XG 10 Gb/s; Straight "A" wiring	Y-2055707-X
24 Fiber; OM3 XG 10 Gb/s; Straight "A" wiring	Y-2055709-X
48 Fiber; OM3 XG 10 Gb/s; Straight "A" wiring	Y-2160071-X
12 Fiber; SM; Straight "A" wiring	Y-2055711-X
24 Fiber; SM; Straight "A" wiring	Y-2055713-X
48 Fiber; SM; Straight "A" wiring	Y-2160077-X

MPOptimate

Description	Product number
12 fiber; OM4 XGA 10 Gb/s; Straight; A wiring	Y-2055576-X
24 fiber; OM4 XGA 10 Gb/s; Straight; A wiring	Y-2055578-X
48 fiber; OM4 XGA 10 Gb/s; Straight; A wiring	Y-2160075-X
12 fiber; OM3 XG 10 Gb/s; A wiring	Y-2055611-X
24 fiber; OM3 XG 10 Gb/s; A wiring	Y-2055715-X
48 fiber; OM3 XG 10 Gb/s; A wiring	Y-2160073-X

Sustituir la Y por la decena y substituir X por longitud unidades.

Ej. 0-2055611-2 (2m), 2-2055611-0 (20m). Para longitudes superiores a 99m consultar a CommScope

Fiber solutions

Fiber Optic Patch Cords Configurator

Fiber Patch Cords



1 2 3 4 5 6 7 8 9 10 11 12 13 14-16
F D X L 1 L 1 2 1 - A X F 010

Prefix

1	FD	Jumper - plenum
	FE	Jumper - riser
2	FF	Jumper - LSZH

Fiber type

	X	LazrSPEED® 550 multimode OM4
3	V	LazrSPEED® 550 multimode OM5
	W	TeraSPEED® singlemode OS2

Connector 1

4	LC	LC standard
	SC	SC standard
5	LA	LC angled
	LU	LC UniBoot*

Connector 2

	LC	LC standard
6	SC	SC standard
7	LA	LC angled
	LU	LC UniBoot*

Cordage size

	2	1.6 mm simplex
8	4	1.6 mm zipcord
	6	2.0 mm dual*

Fiber count

9	1	1 fiber
	2	2 fiber

Jacket color

	A	Blue
	B	Orange
	C	Green
	D	Brown
	E	Slate
11	G	Red
	H	Black
	J	Yellow
	K	Violet
	L	Rose
	M	Aqua

Breakout length

12	X	No breakout
----	---	-------------

Unit of measurement

13	F	Feet
	M	Meter

Length

14	2-999	Feet
16	1-999	Meters

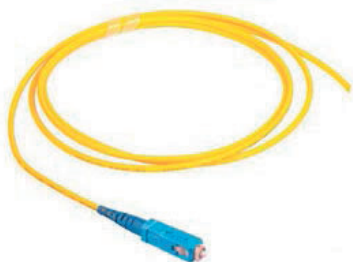


*LC UniBoot CommScope

Fiber solutions

Fiber Optic Pigtails Configurator

Fiber Pigtails



1 2 3 4 5 6 7 8 9 10 11 12 13 14-16
F A X L C U C 0 1 - M X F 002

Prefix

1	FA	Pigtail - plenum BTW
2	FB	Pigtail - riser SBJ
	FC	Pigtail - LSZH SBJ

Fiber type

3	X	LazrSPEED® 550 multimode OM4
	V	LazrSPEED® 550 multimode OM5
	W	TeraSPEED® singlemode OS2

Connector 1

4	LC	LC standard
	SA	SC angled
5	SC	SC standard

Connector 2

6	UC	Unconnectorized
7		

Cordage size

8	0	0.9 mm (Tight buffered fiber BTW)
	1	0.9 mm (SBJ cordage)

Fiber count

9	1	1 fiber
	A	6 fiber pigtail kit BL-WH (1-6)
	B	6 fiber pigtail kit RD-AQ (7-12)
	C	12 fiber pigtail kit BL-AQ (1-12)

Jacket color

11	A	Blue
	B	Orange
	C	Green
	D	Brown
	E	Slate
	G	Red
	H	Black
	J	Yellow
	K	Violet
	L	Rose
	M	Aqua
	X	Kit pigtail

Breakout length

12	X	No breakout
----	---	-------------

Unit of measurement

13	F	Feet
	M	Meter

Length

14	2-23	Feet
16	1-7	Meters

SBJ: 250um fiber + Kevlar + 900um buffer
 BTW: 250um fiber + 900um buffer

Patch Cord Duplex LC Uniboot

Fiber Type	Product number
OM4 LSZH	X-2269151-Y
OM3 LSZH	X-2269147-Y
G657A1 LSZH	X-2269153-Y
G657A2 LSZH	X-2269154-Y

* Usa cable dual 1.5mm, conector dúplex tipo push-pull y permite el intercambio de la polaridad en campo.



Patch Cord Duplex LC OM5 (Opción para pigtail)

Description	Product number
OM5 FDVLC42	Duplex, Plenum
OM5 FVLC42	Duplex, LSZH

*Los Patch Cord son tipo LC y tienen chaqueta de 1.6mm. Para formar el Pigtail cortarlos a la mitad, remover la chaqueta y el Kevlar.



Fiber Optic Connectors



SC Connectors

Description	Product number
Simplex LightCrimp PLUS OM3 & OM4 900um/250mm/3mm	6588291-2
Simplex LightCrimp PLUS OM2 900um/250mm/3mm	6278079-2
Simplex LightCrimp PLUS SM 900um/250mm/3mm	6693276-1
Simplex Epoxy Ceramic MM 900um/250mm	5504932-5
Simplex Epoxy Ceramic SM 900um/250mm	5492123-1

LC Connectors

Description	Product number
Simplex LightCrimp PLUS OM3 & OM4 900um/250um	6754483-4
Simplex LightCrimp PLUS SM 900um/250um	6754482-1
Simplex Epoxy OM3 & OM4 900um/250um	1918385-3
Simplex Epoxy SM 900um/250um	1918384-1



Para otros conectores consultar a CommScope®



19" Racks

Material ID	Product number	Description
760082479	RK3-45A	2-post aluminum rack, 3" channel, 7 ft (12-24 tapped rails)
760082487	RK3-52A	2-post aluminum rack, 3" channel, 8 ft (12-24 tapped rails)
760082495	RK6-45A	2-post aluminum rack, 6" channel, 7 ft (12-24 tapped rails)
760082503	RK6-52A	2-post aluminum rack, 6" channel, 8 ft (12-24 tapped rails)
760082511	RK12-45A	2-post aluminum rack, 12" channel, 7 ft (12-24 tapped rails)
760103010	RK3-17A	2-post aluminum rack, 3" channel, 3 ft (12-24 tapped rails)
760090118	RK3-45S	2-post steel rack, 3" channel, 7 ft (3/8 sq punched)
760090126	RK3-52S	2-post steel rack, 3" channel, 8 ft (3/8 sq punched)
760090134	RK6-45S	2-post steel rack, 6" channel, 7 ft (3/8 sq punched)
760090142	RK6-52S	2-post steel rack, 6" channel, 8 ft (3/8 sq punched)
760082529	RK4P45-29A	4-post aluminum rack, 29", 7 ft (12-24 tapped rails)
760082537	RK4P52-29A	4-post aluminum rack, 29", 8 ft (12-24 tapped rails)
760082560	RK4P45-36A	4-post aluminum rack, 36", 7 ft (12-24 tapped rails)
760082578	RK4P52-36A	4-post aluminum rack, 36", 8 ft (12-24 tapped rails)
760082545	RK4P45-29S	4-post steel rack, 29", 7 ft (3/8 sq punched)
760082552	RK4P52-29S	4-post steel rack, 29", 8 ft (3/8 sq punched)
760082586	RK4P45-36S	4-post steel rack, 36", 7 ft (3/8 sq punched)
760082594	RK4P52-36S	4-post steel rack, 36", 8 ft (3/8 sq punched)

Shelves

Material ID	Product number	Description
760162008	SHELF-19-2U-10	Cantilever Shelf, 19" x 2U x 10D, black
760162016	SHELF-19-2U-14	Cantilever Shelf, 19" x 2U x 14D, black
760162024	SHELF-DS-19-2U-19	Double Sided Shelf, 19" x 2U x 19D, black
760126032	SHELF-HD-DS-10-4U-26	Double Sided Heavy Duty Shelf, 19" x 2U x 26D, black
760162040	SHELF-ADJ-19-1U-24X36	Adjustable Shelf, 19" x 1U x 24-36D, black
760162057	SHELF-KEY-19-2U-8	Roll Out Keyboard Tray, 19" x 2U x 8D, black

Filler Panels

Material ID	Product number	Description
760162065	FPANEL-19-1U	Filler Panel, 1U x 19"
760162073	FPANEL-19-2U	Filler Panel, 2U x 19"
760162081	FPANEL-19-3U	Filler Panel, 3U x 19"

Cable Management

Horizontal & Vertical Managers



Horizontal Cable Management

Material ID	Product number	Description
760072942	HTK-19-SS-1U	1U 19" Single Sided Horizontal Trough Kit
760072959	HTK-19-SS-2U	2U 19" Single Sided Horizontal Trough Kit
760072967	HTK-19-SS-3U	3U 19" Single Sided Horizontal Trough Kit
760128843	HTK-19-DS-1U	1U 19" Double Sided Horizontal Trough Kit
760128850	HTK-19-DS-2U	2U 19" Double Sided Horizontal Trough Kit
760128868	HTK-19-DS-3U	3U 19" Double Sided Horizontal Trough Kit



Vertical Cable Management

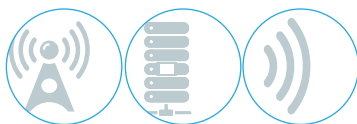
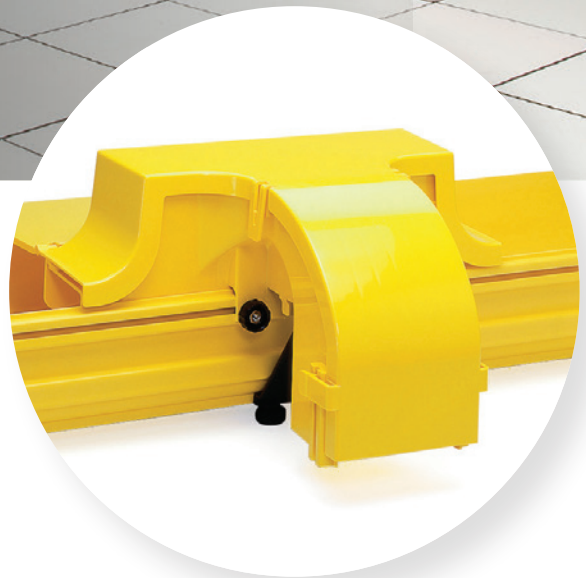
Material ID	Product number	Description
760089342	VCM-DS-84-6B	Double Sided 6 X 84 VCM, black doors
760089359	VCM-DS-84-8B	Double Sided 8 X 84 VCM, black doors
760089367	VCM-DS-84-10B	Double Sided 10 X 84 VCM, black doors
760089375	VCM-DS-84-12B	Double Sided 12 X 84 VCM, black doors
760089425	VCM-SS-84-6B	Single Sided 6 X 84 VCM, black doors
760089433	VCM-SS-84-8B	Single Sided 8 X 84 VCM, black doors
760089441	VCM-SS-84-10B	Single Sided 10 X 84 VCM, black doors
760089458	VCM-SS-84-12B	Single Sided 12 X 84 VCM, black doors
760072785	VCM-DS-84-6	Double Sided 6 X 84 VCM, silver doors
760072793	VCM-DS-84-8	Double Sided 8 X 84 VCM, silver doors
760072801	VCM-DS-84-10	Double Sided 10 X 84 VCM, silver doors
760072819	VCM-DS-84-12	Double Sided 12 X 84 VCM, silver doors
760072868	VCM-SS-84-6	Single Sided 6 X 84 VCM, silver doors
760072876	VCM-SS-84-8	Single Sided 8 X 84 VCM, silver doors
760072884	VCM-SS-84-10	Single Sided 10 X 84 VCM, silver doors
760072892	VCM-SS-84-12	Single Sided 12 X 84 VCM, silver doors



El Sistema de Canalización para Fibra Óptica más Completo de la Industria

Los enlaces de fibra óptica son críticos en la operación de los Centros de Datos. Un daño o curvatura excesiva en el cable podrá producir la caída del enlace, afectando la disponibilidad, los costos y el nivel de servicio ofrecido.

El Sistema FiberGuide de CommScope permite aplicar las mejores prácticas para la instalación del cableado de fibra óptica en Los Centros de Datos, al utilizar una canalización independiente con el objetivo de proteger el cable y su radio de curvatura; facilitando además la instalación y organización del cableado en todo su recorrido.



CommScope® Enterprise Networks – Oficinas Regionales CALA

CommScope® (NASDAQ: COMM) ayuda a las empresas alrededor del mundo a diseñar, desarrollar y gestionar redes cableadas e inalámbricas. Nuestras soluciones de infraestructura de redes ayudan a los clientes a aumentar el ancho de banda, maximizar sus capacidades existentes, mejorar el rendimiento y la disponibilidad de la red, incrementar la eficiencia energética y simplificar la migración hacia nuevas tecnologías. Encontrará nuestras soluciones en los edificios más grandes, en espacios cerrados y al aire libre; en data centers y edificaciones de todos los tamaños, formas y complejidades; en sitios de celdas celulares y en sistemas de cabecera de cable; y en aeropuertos, trenes y túneles.

Las redes vitales alrededor del mundo funcionan con base en soluciones CommScope®. Todos se comunican. Eso es la esencia de la experiencia humana. La forma de comunicarnos está evolucionando.

La tecnología está transformando la forma en que vivimos, aprendemos y prosperamos. El epicentro de esta transformación es la red – nuestra pasión. Nuestros expertos están repensando el propósito, papel y utilidad de las redes para ayudar a nuestros clientes a incrementar el ancho de banda, expandir la capacidad, mejorar la eficiencia, desplegar la velocidad y simplificar la migración. Desde sitios remotos de celulares hasta estadios deportivos multitudinarios, desde aeropuertos saturados hasta centros de datos de vanguardia – nosotros proveemos la experiencia esencial e infraestructura vital que tu negocio necesita para tener éxito. Las redes más avanzadas del mundo confían en la conectividad de CommScope.

Las soluciones CommScope instaladas por nuestra red PartnerPro, tienen garantía extendida de producto y aplicación por un periodo de 25 años.



www.commscope.com/Product-Catalog/New-to-CommScope

© 2018 CommScope, Inc. Todos los derechos reservados. Todas las marcas comerciales identificadas por ® o ™ son marcas registradas de CommScope, Inc. Todas las demás marcas comerciales son propiedad de sus respectivos dueños. Sólo con fines de planificación. CommScope se reserva el derecho de modificar las especificaciones o el producto sin previo aviso. Este documento no tiene la intención de modificar o complementar las especificaciones o garantías relacionadas con los productos o servicios de CommScope.



CommScope Perú S.R.L.

Av. Benavides 1944 Oficina 201

Miraflores

Lima, Perú

Tel: +511 480 08 67

www.commscope.com