

PerleVIEW Central Management Platform

Enterprise-grade Central Management Software



perleVIEW

- Centralized management package to manage 10's, 100's or thousands of Perle devices
- **Cloud Hosting**-- Deploy and manage your network from the cloud
- Scalable Enterprise-grade SNMP platform built on Windows Server and SQL functionality
- Secure clientless internet browser multi-user access
- Complete visibility of the health and performance of your Perle device network
- Powerful event notification and handling: on-screen, email, text messages and X (formerly Twitter) feed

Network Administrators, using their Internet Browser, can securely access PerleVIEW and manage thousands of Perle devices from a centralized server. No user client software is required to be installed on administrators' PCs.

PerleVIEW simplifies managing the Perle device network:


- **See all network problems** at a glance and take appropriate action
- **Track inventory and display** how the devices are performing
- **Gather statistics and run reports** from network data stored in the SQL database
- **Schedule, or issue on-demand, mass deployment** of firmware updates and configuration files
- **Backup and restore** configuration
- **Check the latest firmware** levels automatically
- and much, much more!

```
.demo-button { font-size: 18px; font-weight: bold; color: #ffffff; font-size: 18px; font-weight: bold; border: none; border-radius: 25px; cursor: pointer; background: none !important; }
.demo-button .card { overflow: hidden; border-radius: 25px; border: 3px solid #fff; }
.demo-button .card .card-body { background-color: var(--bs-warning); color: var(--bs-primary); }
#demoBtnLink img{ max-height: 100px; width:auto; }
#demoBtnWrapper{ min-width: 185px; height: 100%; }
```

Network Management Framework

PerleVIEW follows **FCAPS** – Fault management, Configuration, Administration, Performance management, and Security management – the ISO Telecommunications Management Network model and framework for network management.

Fault Management

- **Health Monitoring.** See the operational health of your Perle devices at a glance, and zero in on what needs attention.
- **Fault Management and Automated Event Handling.** Receive automatic failure alerts via on-screen displays, email, SMS and/or X (formerly Twitter) .
- **Integrate with your SNMP NMS.** Use PerleVIEW within your existing core NMS infrastructure.

- **Customizable pro-active monitoring.** Schedule periodic SNMP probes to interrogate the health of all your Perle devices.

Configuration

- **Configuration Management.** Control the configuration and software levels of your networked Perle devices.
- **Automatic Device Discovery.** Discover and identify devices attached to the whole network, or within specific network segments, domains, IP addresses or IP address ranges.
- **CLI Custom Scripts.** Create CLI scripts for various device activities such as large-scale configuration changes.
- **Backup and Restore.** Back up your device configuration for future restoration if, and when, required.
- **Device Firmware Version Control.** Schedule periodic checks for the latest device firmware and PerleVIEW software levels directly from Perle's website.
- **Deploy Device firmware.** Easily update firmware on multiple devices through simple deploy device firmware tasks – on-demand or scheduled.

Administration, Performance & Security Management

- **Easy Navigation.** Easily find your target device in the navigation pane, or search by name, IP subnet, device type, hardware type, health status or even your own custom group.
- **Device grouping.** Set up your own groups of devices according to your organizational needs.
- **In-band Connection Tool.** Directly manage specific devices using Telnet, SSH, http or https. PerleVIEW easily incorporates into your troubleshooting processes via a browser-based GUI or browser-based Command Line Interface (CLI).
- **Single sign-on for in-band connections.** Connect, once authenticated, to any Perle device without re-authenticating again to the device.
- **Device PING tool.** Initiate standard ICMP PINGs from PerleVIEW to a targeted device for a powerful troubleshooting tool right from your browser without having to know the device's IP address.
- **Audit Trail Log.** Review online all tasks performed by all PerleVIEW users, or export as a .csv file.
- **Internet proxy.** Configure access to the Internet for version update checks, email and X Posts through an internet proxy on the server.
- **Reports** Create your own customized reports about device activity, status and other information from our database using standard SQL tools.
- **Other.**
 - ECCN: 5A992
 - HTSUS Number: 4901.10.0090
 - CCATS: G145208

Licensing

- Manage as many devices as you want, with as many users accessing PerleVIEW as you need, thanks to our simple, single unlimited server license. Details under the Documentation tab.

System Requirements

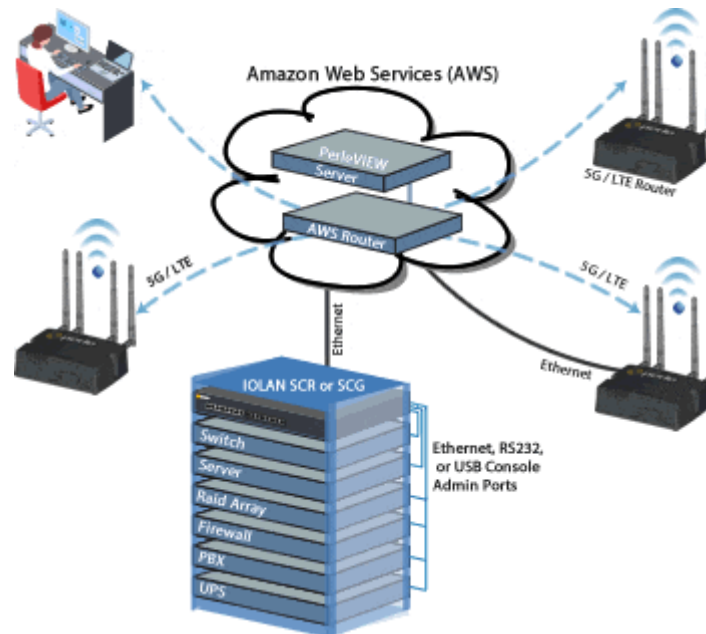
Server Requirements	
Windows Microsoft Server Operating Systems	One of the following: <ul style="list-style-type: none"> • Windows Server 2012 • Windows Server 2016 • Windows Server 2019 • Windows Server 2022 Both 32-bit and 64-bit operating systems
Microsoft Server Components	All of the following: <ul style="list-style-type: none"> • Internet Information Service (IIS) 6.x or higher • Microsoft SQL Server 2005 Express or higher (local or remote). SQL Server Express is delivered with PerleVIEW download • .NET framework 4.x or higher • ASP .NET • WinSNMP
Server Hardware	<ul style="list-style-type: none"> • Minimum Dual Core 2.0 GHz or better • 4 GB RAM minimum • Minimum 2 GB of free disk space
Virtualized Environment support	<ul style="list-style-type: none"> • VMWare ESX, ESXI • Microsoft Hyper-V
Client Requirements	
Internet Browser	One of the following: <ul style="list-style-type: none"> • Internet Explorer 7 or higher • Mozilla Firefox 4.0 or higher • Chrome 8.x or higher • Safari 5 or higher • Microsoft Edge If you will access PerleVIEW via HTTPS, the client must have an Encryption Certificate. PerleVIEW comes with a self-signed certificate. Alternatively, you may use any signed or unsigned certificate issued by a 3rd party.
Device Support	
5G & LTE Routers	All Perle IRG Routers

IOLAN SCR & SCG Console Servers	Perle IOLAN SCR & SCG Secure Out-of-Band Management Console Servers
Managed Industrial Switches	All Perle IDS Managed Industrial Ethernet Switches
Perle Managed Media Converters	All CM media converter modules with MCR-MGT management module (version 1.5 or higher) installed in an MCR chassis <ul style="list-style-type: none"> • CM-100-x, CM-110-x • CM-100-x, CM-110-x • CM-1000-SFP, CM-1110-SFP • CM-10G-x, CM-10GT-x • CM-4GPT-x All SMI standalone (version 1.5 or higher) models <ul style="list-style-type: none"> • SMI-100-x, SMI-110-x • SMI-1000-x, SMI-1110-x • SMI-1000-SFP, SMI-1110-SFP • SMI-10G-x, SMI-10GT-x • SMI-4GPT-x
Perle Managed Ethernet Extenders	All eX-CM Ethernet Extender modules with MCR-MGT management module (version 1.5 or higher) installed in an MCR chassis <ul style="list-style-type: none"> • eX-CM110 • eX-CM1110 All SMI standalone (version 1.5 or higher) models <ul style="list-style-type: none"> • eX-SM110 • eX-SM1110

Application Diagrams

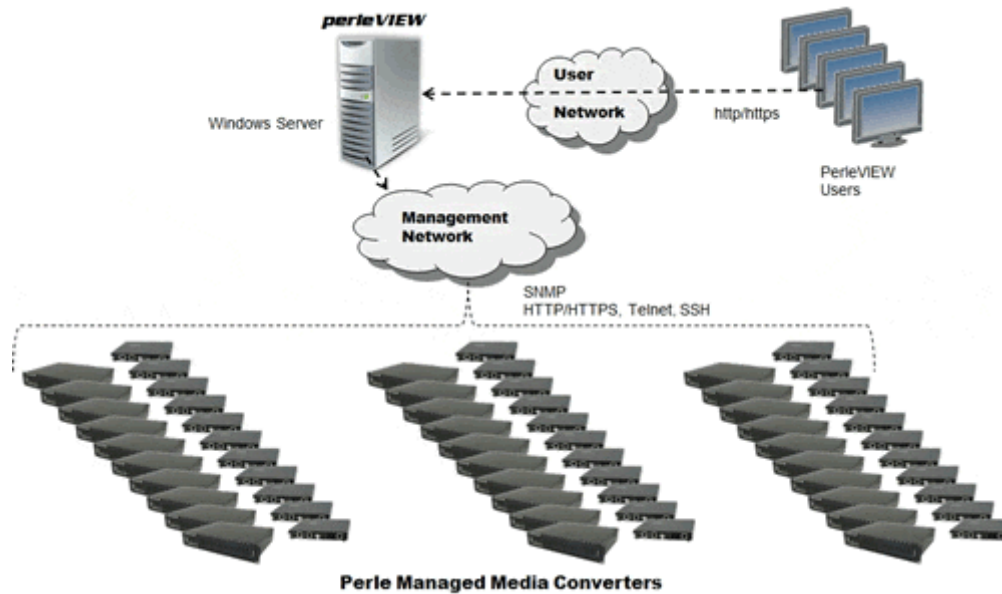
Cloud Hosting -- Deploy and manage your network from the cloud

To simplify management and respond swiftly to issues, network administrators can access all console ports via a single portal view. Perle's cloud-based centralized management solution puts all your network and IT infrastructure into a single application and provides secure reliable access and visibility during normal operations and critical network failures



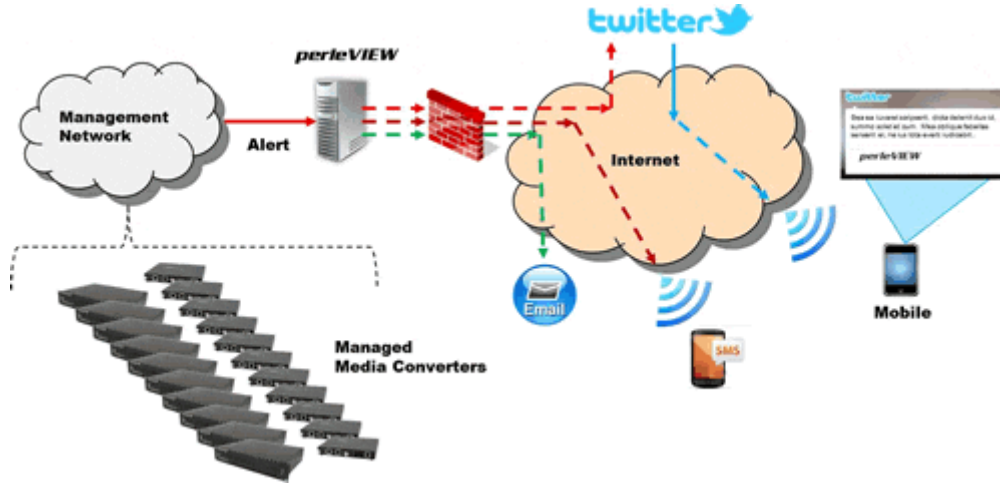
Manage a large-scale Perle device deployment

The PerleVIEW Central Management Platform is an Enterprise-grade, multi-user, Windows server-based network management software application that simplifies the configuration, administration, monitoring, and troubleshooting of media converters for medium to large-scale deployments. This enables your IT organization to focus less on daily maintenance and more on meeting future business needs. Network Administrators using their everyday-use Internet Browser can securely access PerleVIEW and manage their Perle devices from their centralized server.



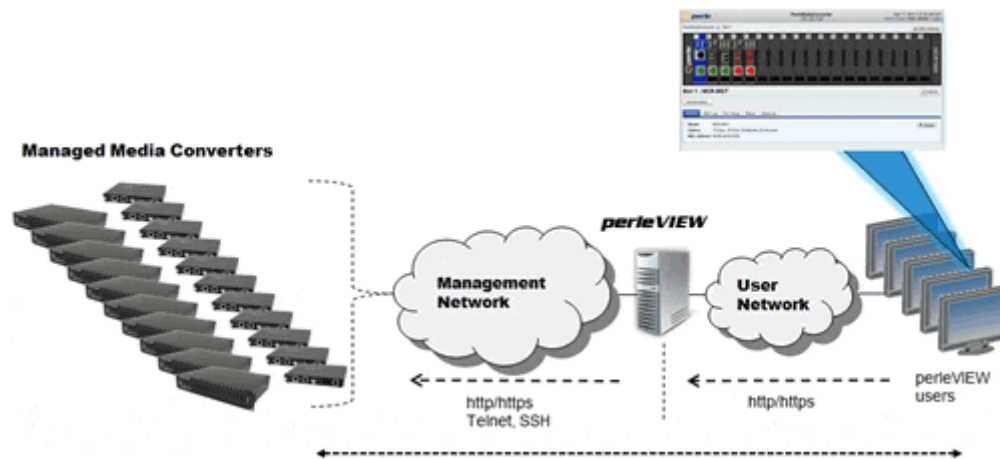
Automated Event Handling - Alert Notification via email, SMS text messaging and X

Alerts sent to PerleVIEW as SNMP traps can initiate a notification to designated support staff via email, SMS text messaging and/or a user X account. Information contains device name, IP address and a brief description of the problem. This enables rapid response to problems that may occur in your managed network.



PerleVIEW In-Band Management Tools

PerleVIEW provides the facility for users to directly access a specific device through their Internet browser. Both web and CLI (Telnet/SSH) based communications are supported via the browser. Unlike most management systems, a Java client download is not required. Simply run CLI or web management sessions via your browser. This enables users to use their troubleshooting tool of choice when resolving problems. As an additional aid, a local ICMP PING tool is also available.



Product List



PerleVIEW Software Activation Code. PerleVIEW Software for Single Windows Server license. This activation code is required for continued use of the PerleVIEW Central Management Platform.

Power Cord & Part Number(s)

None

05059600