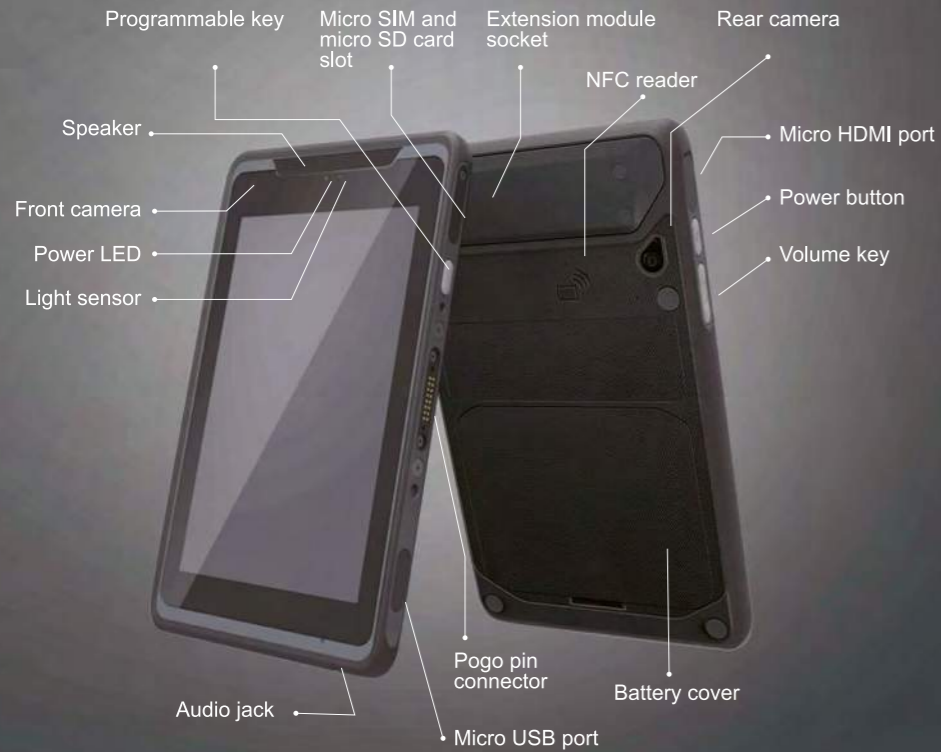


# Layout



## AIM-65 Product Specifications

CPU	Intel® Atom™ quad-core x5-Z8350 (1.44 GHz)
OS	Windows 10 IoT Enterprise, Android 6.0
Memory	2/4 GB (default 2 GB)
eMMC	32/64 GB (default 32 GB)
Display	8" WUXGA IPS LCD with 400-nit brightness and 1200 x 1920 resolution
Touch Panel	Corning® Gorilla® Glass 3 with 10-point multi-touch P-CAP control
Wireless	802.11 b/g/n, BT4.0, NFC, 3G/LTE (optional)
Camera	Front: 2 megapixels; Rear: 5 megapixels
Multimedia	1 x digital microphone, 1 x speaker, 1 x audio combo jack
I/O	1 x micro HDMI, 1 x micro USB 2.0, 1 x dual micro SIM and micro SD tray, 1 x 16-pin pogo connector (USB 3.0 + power), 1 x 14-pin pogo connector (USB 2.0 + TX/RX + power)
Battery	3.8 V, 18.6 W, with battery meter; replaceable
Temperature	Operating: -10 ~ 50 °C (14 ~ 122 °F); 0 ~ 40 °C (32 ~ 104 °F) when charging Storage: -20 ~ 60 °C (-4 ~ 140 °F)
Impact Tolerance	Passed 4-foot (120-cm) drop test onto concrete
IP Rating	IP65
Safety/EMC	UL, CB, LVD + Energy Star 6.1, CE, FCC, IC, VCCI, RCM, CCC, BSMI
Certifications	RED, FCC ID, IC, TELEC, NCC, SRRC, RCM
Dimensions	142 x 240 x 14.5 mm (5.59 x 9.44 x 0.57")
Weight	600 g (1.32 lb)

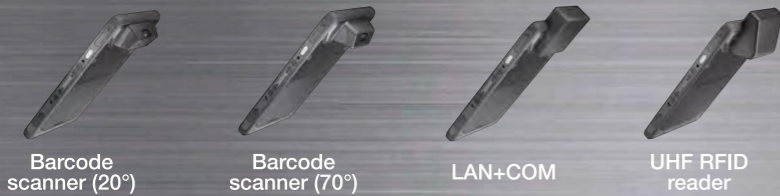


www.advantech.com  
Please verify specifications before quoting. This guide is intended for reference purposes only. All product specifications are subject to change without notice.  
No part of this publication may be reproduced in any form or by any means, electronic, photocopying, recording or otherwise, without prior written permission of the publisher.  
All brand and product names are trademarks or registered trademarks of their respective companies.  
© Advantech Co., Ltd. 2017



# Expandability

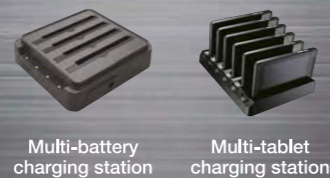
## Maximize Functionality



## Configure to the Job



## Grab and Go



Purpose-Built Solution  
**AIM-65**

Application-Oriented Extensions

- Field Service
- Manufacturing
- Transportation
- Fleet Management
- Warehousing

## AIM-65

Advancements in mobile technology are transforming field service operations. Mobile computing devices provide real-time access to data, enabling field workers to make informed decisions on the spot. This streamlines workflows and improves efficiency to ultimately optimize quality and increase productivity.

Advantech's AIM-65 rugged 8" tablet features an Intel® Atom™ x5-Z8350 processor with dual OS support and a lightweight (600 g), fanless design to ensure maximum portability and configuration flexibility. Built-in Wi-Fi, NFC, 3G/4G LTE, and Bluetooth 4.0 technology is provided to enable high-speed data transmissions and real-time communication with backend control systems. AIM-65 is also equipped with two extension ports for integrating diverse peripheral modules in order to provide customizable application-specific solutions.

## Features



### Industrial-Grade Reliability

Built to withstand operation in harsh environments, AIM-65 features 4-ft. drop tolerance and an IP65 rating for protection from dust and water ingress.



### Thin, Lightweight Design

AIM-65's slim (14.5 mm) and lightweight (600 g) design ensures portability and convenient operation.



### Flexible Configuration

Aimed at diverse applications, AIM-65 features front and rear cameras and supports both touch and stylus control, as well as Wi-Fi, NFC, and Bluetooth connectivity.



### Dual OS Platform

AIM-65 supports both the Windows 10 IoT Enterprise and Android 6.0 operating systems to enable flexible configuration according to specific requirements.



### Swappable Battery with Battery Meter

AIM-65 features a swappable battery that supports long-duration usage. The accompanying battery meter shows the remaining power and recharge status.



### AIM Android

AIM-65 equipped with the AIM android platform offers industrial-grade security and enterprise management for optimized operations.

## Field Service



## Warehousing



Office docking station



LAN + COM



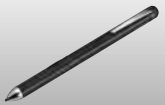
Holster



VESA docking station



UHF RFID reader



Active stylus

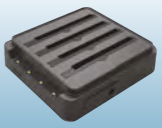
## Manufacturing



Advanced VESA docking station

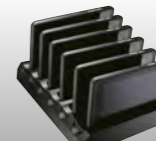


Barcode scanner (20°)



Multi-battery charging station

## Transportation



Multi-tablet charging station



MSR reader



Shoulder strap

## Fleet Management



Vehicle docking station



Barcode scanner (70°)



Hand strap