

PRODUCT CATALOG



The leading provider of alerting and communication solutions.

TABLE OF CONTENTS

About Us, Industries, & Pillars of Technology	1
Tower Solutions	3
Wall and Surface Mount Solutions	12
Analog and IP Call Station Solutions	18
Access Control Solutions	27
Fixed Station, Analog, and IP Area of Rescue Solutions	35
Emergency Communication System Monitor for Area of Rescue and Blue Light Phone Systems	45
Notes	46



LEARN MORE ABOUT US

WHO

We are Talkaphone, the industry's leading designer and manufacturer of security and life safety communication solutions.

WHAT

From blue light towers and access control to mass notification and personal safety solutions, our versatile family of products can be configured to meet any application.

WHERE

Talkaphone is headquartered in Niles, IL and proudly manufactures our line of high-performance, ADA-compliant communication systems in the United States.



MADE IN USA

WHEN

Established in 1935, Talkaphone has been designing and developing reliable, flexible communication systems with our customers' needs in mind for over 88 years.

WHY

We've answered the call for diverse and meaningful products that address communication needs as well as security integration. Safety is our number one priority.

Compatible Solution Providers



INDUSTRIES



EDUCATION



HEALTH CARE



CORPORATE



GOVERNMENT



MASS TRANSIT



PARKING

PILLARS OF TECHNOLOGY



MASS NOTIFICATION



BLUE LIGHT PHONES



PERSONAL SAFETY AND COLLABORATION



AREA OF RESCUE



SIP INTERCOM ACCESS CONTROL

TOWER SOLUTIONS

With a simple push of a button or wave of a hand, Talkaphone's highly visible and easily accessible blue light phone towers can be used to report a crime, a fire, suspicious activity or any other emergency. Tower solutions are ideal for higher education campuses, health care facilities, walking paths and other high risk remote areas where security may be a concern. Strategically placed towers are also an affordable crime deterrent, offering consistent community reassurance for immediate emergency assistance when needed.



WEBS-MT/R-OP4



GENERAL DETAILS

- Continuously lit LED blue light
- Camera arm with dome camera
- Wide-Area Emergency Broadcast System (WEBS®) to alert and notify a public area
- Available in custom colors, lettering and graphics
- Built-in microphone for local public address (PA) announcements
- Can be configured with any analog or IP call station

AVAILABLE OPTIONS

- Solar power designed to integrate with cellular interface provides completely wireless communication
- Fixed camera or camera arm mount
- Automated External Defibrillator (AED)

MODEL VARIANTS



ETP-MTE-WP



ETP-MTE-W



ETP-MT/R-AED



ETP-MTE-72

TOWERS COMPARISON TABLE

Feature	Benefit	MT Series	MTE Series	MT/R Series	WEBS Series
Steel Construction	<ul style="list-style-type: none"> Vandal resistant and robust build quality 	●	N/A	●	●
Aluminum Construction	<ul style="list-style-type: none"> Light weight aluminum construction allows for single-person installation—providing labor savings Durable, multilayer powder coating achieves near-zero waste and VOC (volatile organic compound) emissions Vandal resistant and robust build quality 	N/A	●	N/A	N/A
Modular Design	<ul style="list-style-type: none"> Modular construction provides for future reconfiguration or upgrades 	N/A	●	N/A	N/A
Internal Mounting Panels/ Shelves	<ul style="list-style-type: none"> Internal mounting panels and shelves allow for easy mounting of power supplies, media adapters, or other third-party equipment 	○	●	○	●
LED Blue Light	<ul style="list-style-type: none"> Deterrent Provides a sense of safety—indicates locations with call stations to request assistance Flashes when call station is activated to allow public safety or first responders to quickly identify and move toward an event 	●			
LED Panel Light	<ul style="list-style-type: none"> Illuminates call station faceplate 	●			
Switched Grid Power System Ready	<ul style="list-style-type: none"> Leverages part-time power available from an outdoor lighting system Eliminates costly trenching for buried power cabling 	○ (Only compatible with the PCS-42-6)	●	○	N/A
Wireless / Solar System Ready:	<ul style="list-style-type: none"> Enables a blue light tower to be installed in a location without easy access to hardwired communication and/or power lines 	○	○	○	N/A
Fixed Camera Option	<ul style="list-style-type: none"> Captures video surveillance for call station activation from pre-roll (i.e. person approaching blue light tower) to end of event 	○			
Single Overhead Camera Option	<ul style="list-style-type: none"> Captures overhead video surveillance for situational awareness of the local area around the blue light tower 	○			
Dual Overhead Camera Option		○			
Area Light Option	<ul style="list-style-type: none"> Surrounds the blue light tower with light Enhances the sense of safety Deterrent 	○			
Mass Notification	<ul style="list-style-type: none"> Built-in Wide-Area Emergency Broadcast System (WEBS®) to alert and notify a public area 	○ (Only through retrofit kit)	N/A	○ (Only through retrofit kit)	●
Built-in Handheld Microphone	<ul style="list-style-type: none"> Provides capability to make local public address (PA) announcements 	N/A	N/A	N/A	●
Limited Warranty	<ul style="list-style-type: none"> 5-year limited warranty on non-electronic components 2-year limited warranty on lighting components 	●			

● = Standard ○ = Option available N/A = Not Available

MT SERIES TOWERS



ETP -MT
(shown with VOIP-600E)

Talkaphone's ETP-MT emergency phone tower is an ideal security solution for remote and high-risk areas. Standing over nine feet tall, this vandal-resistant tower serves as a great deterrent to crime.

FEATURES

- LED blue light (included) is continuously lit and flashes for duration of a call when EMERGENCY button is pressed to draw attention
- Emergency phone faceplate is illuminated at all times by an LED panel light
- Vandal-resistant structure and coating designed to resist extreme weather conditions
- Variety of signage, graphics, and color choices are available
- Easily mount any Talkaphone ETP-500 Series, VOIP-500 Series or VOIP-600 Series Emergency/Information Phone into tower (sold separately)

Model Series	(A) Fixed Camera	(B) Overhead Camera	(C) Combination Camera	(D) Area Light with Overhead Camera	(E) Power Charging System	(F) Solar System
ETP-MT	<p>[Leave Blank] No fixed camera support or has combination camera support</p> <p>-OP2 Fixed camera ready</p> <p>-OP3IP Fixed IP camera included</p>	<p>[Leave Blank] No overhead camera support or has combination camera support</p> <p>-OP4 Overhead camera ready</p> <p>-OP4P Overhead camera ready with post for pole-mounting other devices (e.g. antenna, access point, etc.)</p> <p>-OP5IP Overhead IP camera included</p>	<p>[Leave Blank] No combination camera support</p> <p>-OP2-4 Fixed and overhead camera ready</p> <p>-OP2-4P Fixed and overhead camera ready with post for pole-mounting other devices (e.g. antenna, access point, etc.)</p>	<p>[Leave Blank] No area light with overhead camera support</p> <p>-BLP1 Area light provided, overhead camera ready</p> <p>-BLP1P Area light provided, overhead camera ready, includes post for pole-mounting other devices (e.g. antenna, access point, etc.)</p>	<p>[Leave Blank] No power charging system support</p> <p>-PCS Power Charging System (PCS) ready and other third-party devices</p>	<p>[Leave Blank] No solar system support</p> <p>-SOLAR Solar system ready</p>
Note	Cannot combine with (B), (C), or (F).	Cannot combine with (A), (C), (D), or (F).	Cannot combine with (A), (B), (D), or (F).	Cannot combine with (B), (C), or (F).	Cannot combine with (F).	Cannot combine with (A), (B), (C), (D), or (E).
Example #1	ETP-MT		-OP4P		-PCS	
Example #2	ETP-MT					-SOLAR

Note: For models not configured with an overhead camera mounting arm (i.e. (B), (C), and (D) are blank), an overhead camera mounting arm can be ordered and retrofitted in the future—see p.10.

MTE SERIES TOWERS



ETP-MTE-W
(shown with VOIP-600E)

The ECO TOWER® emergency phone tower, model ETP-MTE, combines economy and ecology into one stylish product. Durable yet lightweight, this aluminum tower stands nine feet tall. An always-lit LED blue light mounted atop the tower provides high visibility and gives passers-by a sense of security.

FEATURES

- Lightweight aluminum construction for reduced ecological footprint and one-person installation; modular construction allows for easy upgrades
- Durable, multilayer powder coating achieves near-zero waste and VOC (volatile organic compound) emissions
- Optional internal mounting plates and shelves provide clean mounting solutions for accessories
- Vandal-resistant and designed to resist extreme weather conditions
- Easily mount any Talkphone ETP-500 Series, VOIP-500 Series or VOIP-600 emergency/information phone into unit (sold separately)

*Note: For overhead camera mounting arm, order accessory model number **ETP-MTE-ARM** — not compatible with ETP-MTE Series Towers configured with **Column (B)**.*

	(A)	(B)
Model Series	Fixed Camera	Wireless
ETP-MTE	<p>[Leave Blank] No fixed camera support or has combination camera support</p> <p>-OP2 Fixed camera ready</p> <p>-OP3IP Fixed IP camera included</p>	<p>[Leave Blank] No wireless support</p> <p>-W Wireless ready</p> <p>-WP Wireless and solar system ready (cannot combine with Column (A))</p>
Note		Cannot combine with overhead camera mounting arm.
Example #1	ETP-MTE	-OP3IP
Example #2	ETP-MTE	-WP

Note: For an overhead camera mounting arm, order one of the models on p.10. Overhead camera mounting arm can be retrofitted in the future. Not compatible with ETP-MTE Series Towers configured with the **-WP** option.

MT/R SERIES TOWERS



ETP-MT/R-AED (shown with VOIP-600E)

Model ETP-MT/R is an ideal security solution for remote and high-risk areas. Standing over nine feet tall, this vandal-resistant tower serves as a great deterrent to crime. An always-lit LED blue light mounted atop the tower provides visibility and gives students and visitors on campus a sense of security.

FEATURES

- Offers contemporary architectural styling and greater visibility than standard towers due to its larger size and radius corners
- LED blue light (included) is continuously lit and flashes for duration of a call when EMERGENCY button is pressed to draw attention
- LED blue light is housed in a protective polycarbonate housing (except OP4, OP5) and emergency phone faceplate is illuminated at all times by a LED panel light
- Vandal-resistant structure and coating designed to resist extreme weather conditions
- Variety of signage, graphics and color choices are available

Model Series	(A) Integrated Devices	(B) Fixed Camera	(C) Overhead Camera	(D) Combination Camera	(E) Area Light with Overhead Camera	(F) Power Charging System	(G) Solar System
ETP-MT/R	<p>[Leave Blank] No integrated devices</p> <p>-AED Integrated housing for automated external defibrillator (AED)—AED not included</p> <p>-AED-HTR Integrated housing for automated external defibrillator (AED) with heater/thermostat—AED not included</p>	<p>[Leave Blank] No fixed camera support or has combination camera support</p> <p>-OP2 Fixed camera ready</p> <p>-OP3IP Fixed IP camera included</p>	<p>[Leave Blank] No overhead camera support or has combination camera support</p> <p>-NA Overhead camera mounting arm ready</p> <p>-OP4 Overhead camera ready</p> <p>-OP4P Overhead camera ready with post for pole-mounting other devices (e.g. antenna, access point, etc.)</p> <p>-OP5IP Overhead IP camera included</p>	<p>[Leave Blank] No combination camera support</p> <p>-OP2-4 Fixed and overhead camera ready</p> <p>-OP2-4P Fixed and overhead camera ready with post for pole-mounting other devices (e.g. antenna, access point, etc.)</p>	<p>[Leave Blank] No area light with overhead camera support</p> <p>-BLP1 Area light provided, overhead camera ready</p> <p>-BLP1P Area light provided, overhead camera ready, includes post for pole-mounting other devices (e.g. antenna, access point, etc.)</p>	<p>[Leave Blank] No power charging system support</p> <p>-PCS Power Charging System (PCS) ready and other third-party devices</p>	<p>[Leave Blank] No solar system support</p> <p>-SOLAR Solar system ready</p>
Note	Cannot combine with (F) or (G).	Cannot combine with (C), (D), or (G).	Cannot combine with (B), (D), (E), or (G).	Cannot combine with (B), (C), (E), or (G).	Cannot combine with (C), (D), or (G).	Cannot combine with (A) or (G).	Cannot combine with (A), (B), (C), (D), (E), or (F).
Example #1	ETP-MT/R -AED	-OP2			-BLP1		
Example #2	ETP-MT/R						-SOLAR

Note: For models configured with the overhead camera mounting arm ready option (i.e. model numbers with -NA), an overhead camera mounting arm can be ordered and retrofitted in the future—see p.10.

WEBS®-MT/R SERIES TOWERS



WEBS-MT/R
(shown with VOIP-600E)

The WEBS® Tower is an ideal security solution for remote and high-risk areas in need of mass notification broadcast coverage. The unit can be used as part of the WEBS® platform to notify large masses of people via an audible message.

FEATURES

- Concealed high-power speakers provide 360° coverage
- Continuously lit, attention-getting LED blue light strobe is included and mounted atop the unit
- Send live or prerecorded audio messages through WEBS Contact Plus® or other platforms
- Local mustering capability: personnel can unlock the local command station and make on-site announcements
- Retrofit kit can convert an existing ETP/MT or ETP-MT/R tower to a highly visible WEBS®-enabled mass notification unit

Model Series	(A) Fixed Camera	(B) Overhead Camera	(C) Combination Camera	(D) Area Light with Overhead Camera
WEBS-MT/R	<p>[Leave Blank] No fixed camera support or has combination camera support</p> <p>-OP2 Fixed camera ready</p> <p>-OP3IP Fixed IP camera included</p>	<p>[Leave Blank] No overhead camera support or has combination camera support</p> <p>-NA Overhead camera mounting arm ready</p> <p>-OP4 Overhead camera ready</p> <p>-OP4P Overhead camera ready with post for pole-mounting other devices (e.g. antenna, access point, etc.)</p> <p>-OP5IP Overhead IP camera included</p>	<p>[Leave Blank] No combination camera support</p> <p>-OP2-4 Fixed and overhead camera ready</p> <p>-OP2-4P Fixed and overhead camera ready with post for pole-mounting other devices (e.g. antenna, access point, etc.)</p>	<p>[Leave Blank] No area light with overhead camera support</p> <p>-BLP1 Area light provided, overhead camera ready</p> <p>-BLP1P Area light provided, overhead camera ready, includes post for pole-mounting other devices (e.g. antenna, access point, etc.)</p>
Note	Cannot combine with (C), or (D).	Cannot combine with (B), (D), or (E).	Cannot combine with (B), (C), or (E).	Cannot combine with (C) or (D).
Example #1	WEBS-MT/R	-OP2		-BLP1
Example #2	WEBS-MT/R		-OP2-4	

Note: For models not configured with an overhead camera mounting arm (i.e. (B), (C), and (D) are blank), an overhead camera mounting arm can be ordered and retrofitted in the future—see p.10.

OVERHEAD CAMERA MOUNTING ARMS FOR TOWERS

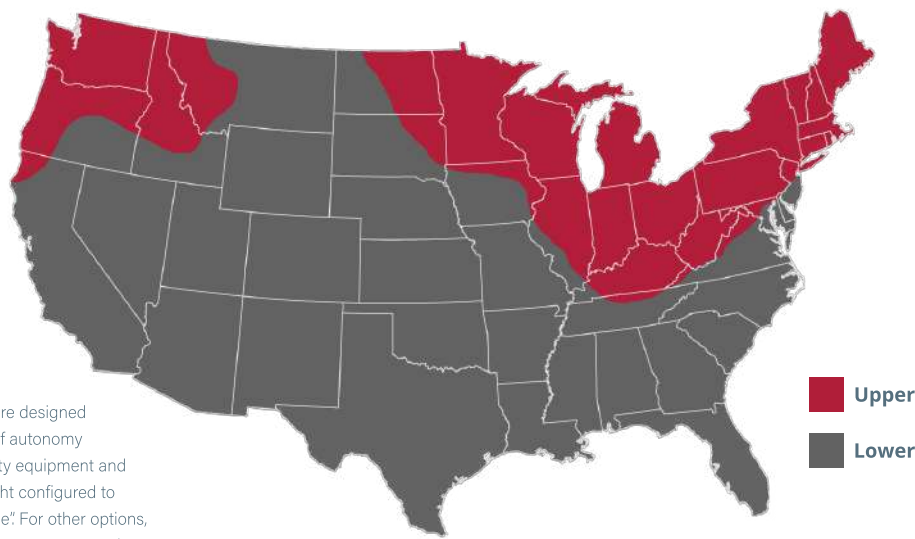
MT, MT/R, & WEBS-MT/R SERIES TOWER ARMS

Model Number	Description
OPTION-4-ARM	Overhead camera mounting arm—ready for a single overhead camera (camera not included). For dual-camera support, add Model OP-4D-EXT .
OPTION-4P-ARM	Overhead camera mounting arm with post for pole-mounting a third-party device (e.g., antenna, access, point, etc.). Ready for a single overhead camera (camera not included).
OP-4D-EXT	Extension for overhead camera mounting arm to support two (2) overhead cameras (cameras not included). Compatible with OPTION-4-ARM , OPTION-4P-ARM , OP4-ARM-LP-1 , and OP4P-ARM-LP-1 .
OP4-ARM-LP-1	Overhead camera mounting arm ready for an LED area light (Model Year 2016 and later) and a single overhead camera (area light and camera are not included).
OP4P-ARM-LP-1	Overhead camera mounting arm with post for pole-mounting a third-party device (e.g., antenna, access, point, etc.). Ready for an LED area light (Model Year 2016 and later) and a single overhead camera (area light and camera are not included).

MTE SERIES TOWER ARMS

Model Number	Description
ETP-MTE-ARM	Overhead camera mounting arm—ready for a single overhead camera (camera not included). For dual-camera support, add Model OP-4D-EXT .
ETP-MTE-W-ARM	Overhead camera mounting arm—ready for a single overhead camera and cellular/GPS antennas (camera and antennas are not included). For dual-camera support, add Model OP-4D-EXT .
ETP-MTE-WP-ARM	Overhead camera mounting arm with post for pole-mounting a third-party device (e.g., antenna, access, point, etc.). Ready for a single overhead camera and cellular/GPS antennas (camera and antennas are not included).
OP-4D-EXT	Extension for overhead camera mounting arm to support two (2) overhead cameras (cameras not included). Compatible with ETP-MTE-ARM and ETP-MTE-W-ARM .

SOLAR SYSTEM CONFIGURATION



■ Upper
■ Lower

*Note: Systems are designed for five (5) days of autonomy with no third-party equipment and with LED blue light configured to "Low Power Mode". For other options, contact Talkaphone Systems Design.

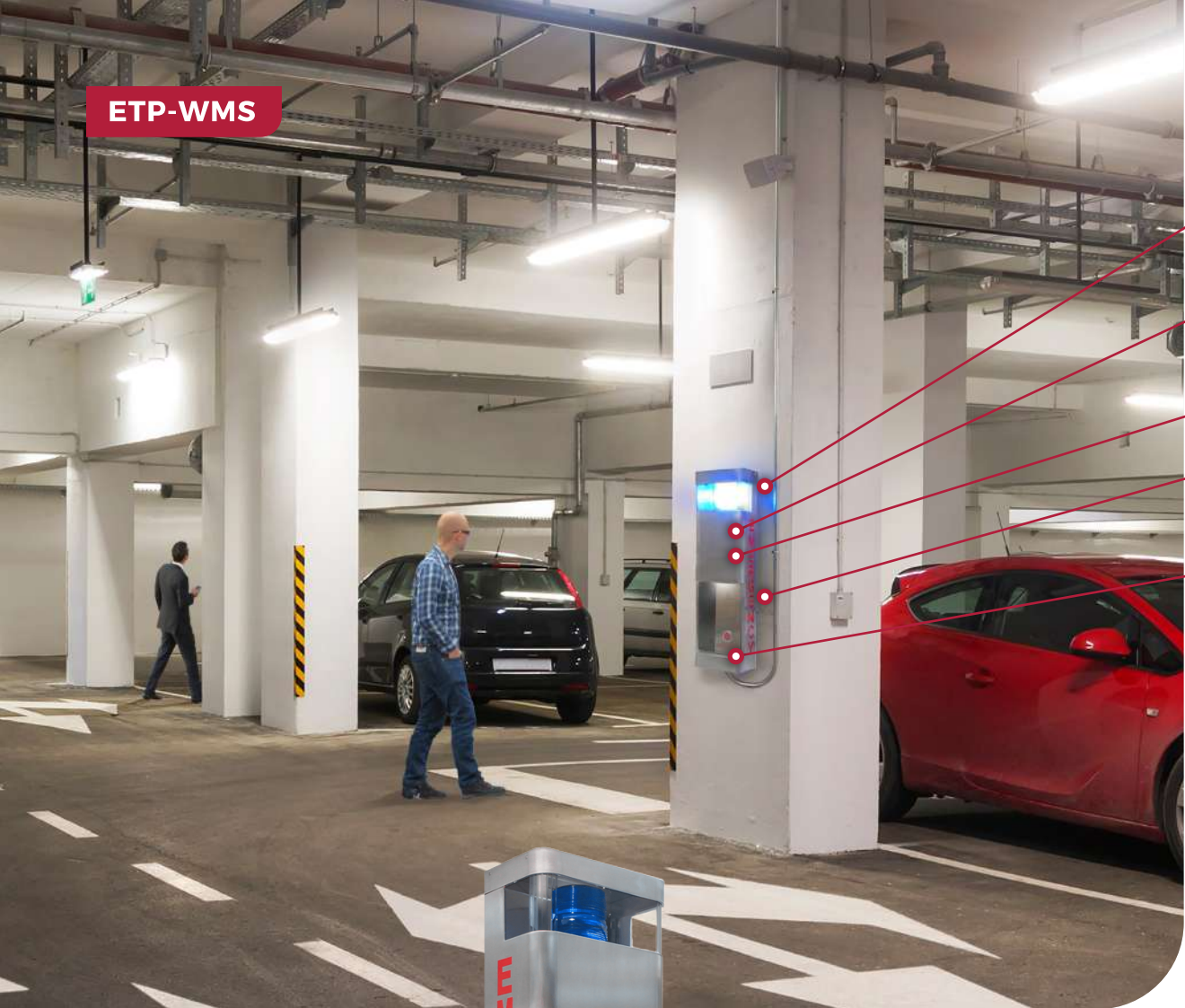
		Tower Mount				
						
		OR		OR		
		ETP-MTE-WP	ETP-MT/R-SOLAR	ETP-MT-SOLAR60 OR ETP-MT/R-SOLAR60		
Call Station	Zone	Wireless Interface	Solar Package	ETP-MTE-WP	ETP-MT/R-SOLAR	ETP-MT-SOLAR60 OR ETP-MT/R-SOLAR60
ETP-500 + 4G LTE Cellular Interface 	Lower	<input type="checkbox"/> ETP-CI-4G-GSM OR <input type="checkbox"/> ETP-CI-4G-V	<input type="checkbox"/> SLR-80-84 Includes: • 80 Watt solar panel • 84 Amp hour battery bank	<input type="checkbox"/>	<input type="checkbox"/>	N/A
	Upper	<input type="checkbox"/> ETP-CI-4G-GSM OR <input type="checkbox"/> ETP-CI-4G-V	<input type="checkbox"/> SLR-120-84 Includes: • 120 Watt solar panel • 84 Amp hour battery bank	<input type="checkbox"/>	<input type="checkbox"/>	N/A
VOIP-500 or VOIP-600 + Wireless IP Backhaul 	Lower	Cisco FM1200 Volo (provided by others)	<input type="checkbox"/> SLR-160-168-ENC Includes: • 160 Watt solar panel array • 168 Amp hour battery bank • External battery enclosure	N/A	N/A	<input type="checkbox"/>
	Upper	Cisco FM1200 Volo (provided by others)	<input type="checkbox"/> SLR-240-168-ENC Includes: • 240 Watt solar panel array • 168 Amp hour battery bank • External battery enclosure	N/A	N/A	<input type="checkbox"/>

WALL AND SURFACE MOUNT SOLUTIONS

Emergency Communication Wall and Surface Mount Stations are an ideal security solution for remote and high-risk areas. A refined new look for an essential security component, Talkaphone's wall mount and surface mount solutions are constructed of durable stainless steel and designed to resist extreme weather conditions. From a slim fit for tight spaces or walkways to an emergency trip button for mass-transit projects, Talkaphone has the right solution for any application.



ETP-WMS



GENERAL DETAILS

- Continuously lit LED blue light flashes while activated
- Brushed stainless steel standard – custom painted available
- Decals for organization logos are available
- Reflective lettering available in custom colors and verbiage
- IP or analog call station ready

AVAILABLE OPTIONS

- Fixed camera option in housing
- Automated External Defibrillator (AED) in housing
- Emergency trip button for mass transit applications can be engaged to halt oncoming train in an emergency

MODEL VARIANTS



ETP-WM-AED-1



ETP-WMSE



ETP-WM-TPK-IP66

WALL MOUNT COMPARISON TABLE

Feature	Benefit	WM Series	WM/E Series	WMS Series	WMSE Series
Marine Grade 316 Stainless Steel Construction	<ul style="list-style-type: none"> Vandal resistant and robust build quality with a contemporary architectural style 			●	
Available Painted Finish	<ul style="list-style-type: none"> Durable paint system provides a style that conforms to an organization's brand 			○	
4-inch Depth	<ul style="list-style-type: none"> Slim profile offers a minimalist style Reduced profile minimizes protrusion into a path of travel 		N/A		●
LED Blue Light	<ul style="list-style-type: none"> Deterrent Provides a sense of safety—indicates locations with call stations to request assistance Flashes when call station is activated to allow public safety or first responders to quickly identify and move toward an event 			●	
LED Panel Light	<ul style="list-style-type: none"> Illuminates call station faceplate 	●	N/A	●	N/A
Fixed Camera Option	<ul style="list-style-type: none"> Captures video surveillance for call station activation from pre-roll (i.e. person approaching blue light phone) to end of event 			○	
Mass Notification	<ul style="list-style-type: none"> Built-in Wide-Area Emergency Broadcast System (WEBS®) to alert and notify a public area 	○		N/A	
Limited Warranty	<ul style="list-style-type: none"> 5-year limited warranty on non-electronic components 2-year limited warranty on lighting components 			●	

● = Standard ○ = Option available N/A = Not Available

ETP-WM WALL MOUNT

Talkaphone's wall mount emergency call station is an ideal security solution for remote and high-risk areas. It offers contemporary architectural styling and is constructed of durable 316 marine grade stainless steel.



ETP-WM
(shown with VOIP-600E)

FEATURES

- Designed to resist extreme weather conditions
- Continuously lit LED blue light flashes while activated - faceplate LED is lit at all times
- Impact-resistant polycarbonate lens resistant to UV-fade
- IP or analog call station ready
- Also available in economy (ETP-WM/E) and wide-area broadcasting (WEBS-WM) options

	(A)	(B)	(C)	(D)
Model Series	Economy Form Factor	Fixed Camera	Finish	Lettering
ETP-WM	<p>[Leave Blank] Standard form factor with light above call station</p> <p>/E Economy form factor—does not include light above call station</p>	<p>[Leave Blank] No fixed camera support or has combination camera support</p> <p>-OP2 Fixed camera ready</p> <p>-OP3IP Fixed IP camera included</p>	<p>[Leave Blank] Stainless steel finish</p> <p>-BL Painted blue</p> <p>-BK Painted black</p> <p>-GN Painted green</p> <p>-OR Painted orange</p> <p>-RD Painted red</p> <p>-WH Painted white</p> <p>-YE Painted yellow</p>	<p>[Leave Blank] Includes lettering—to be specified at time of order</p> <p>-NL No lettering</p>
Note			Custom paint colors available upon request.	
Example #1	ETP-WM /E	-OP2	-YE	
Example #2	ETP-WM	-OP3IP		

ETP-WMS SLIM WALL MOUNT



ETP-WMS
(shown with VOIP-600E)

Talkaphone’s slim Wall Mount S emergency call station is an ideal security solution for narrow, remote and high-risk areas. It offers slim, contemporary architectural styling and is constructed of durable 316 marine grade stainless steel.

FEATURES

- Slim 4-inch housing depth
- Attention-getting, continuously-lit LED blue light is included and mounted inside a polycarbonate housing; flashes for the duration of a call to draw attention to unit when “EMERGENCY” button is pressed.
- Vandal-resistant marine grade 316 stainless steel construction; designed to resist extreme weather conditions
- IP or analog call station ready
- Economy option available (ETP-WMSE)

	(A)	(B)	(C)	(D)
Model Series	Economy Form Factor	Fixed Camera	Finish	Lettering
ETP-WMS	<p>[Leave Blank] Standard form factor with light above call station</p> <p>E Economy form factor—does not include light above call station</p>	<p>[Leave Blank] No fixed camera support or has combination camera support</p> <p>-OP2 Fixed camera ready</p> <p>-OP3IP Fixed IP camera included</p>	<p>[Leave Blank] Stainless steel finish</p> <p>-BL Painted blue</p> <p>-BK Painted black</p> <p>-GN Painted green</p> <p>-OR Painted orange</p> <p>-RD Painted red</p> <p>-WH Painted white</p> <p>-YE Painted yellow</p>	<p>[Leave Blank] Includes lettering—to be specified at time of order</p> <p>-NL No lettering</p>
Note			Custom paint colors available upon request.	
Example #1	ETP-WMS E	-OP2	-YE	
Example #2	ETP-WMS	-OP3IP		

ETP-SM SURFACE MOUNT ACCESSORY

The surface mount accessory is designed to surface mount any Talkaphone flush mount call station indoors or outdoors and to identify the location of a call station with lettering on both sides. The unit is constructed of durable stainless steel.



ETP-SM-1
(shown with VOIP-500E)



ETP-SMH-1
(shown with VOIP-500E)



ETP-SMCR
(shown with VOIP-600E)

FEATURES

- Durable housing can be mounted to a wall or a pole with optional pole mount kit
- Vandal-resistant stainless steel construction
- Designed to resist extreme weather conditions
- Optional weather-protective hood
- Available in card reader ready configuration

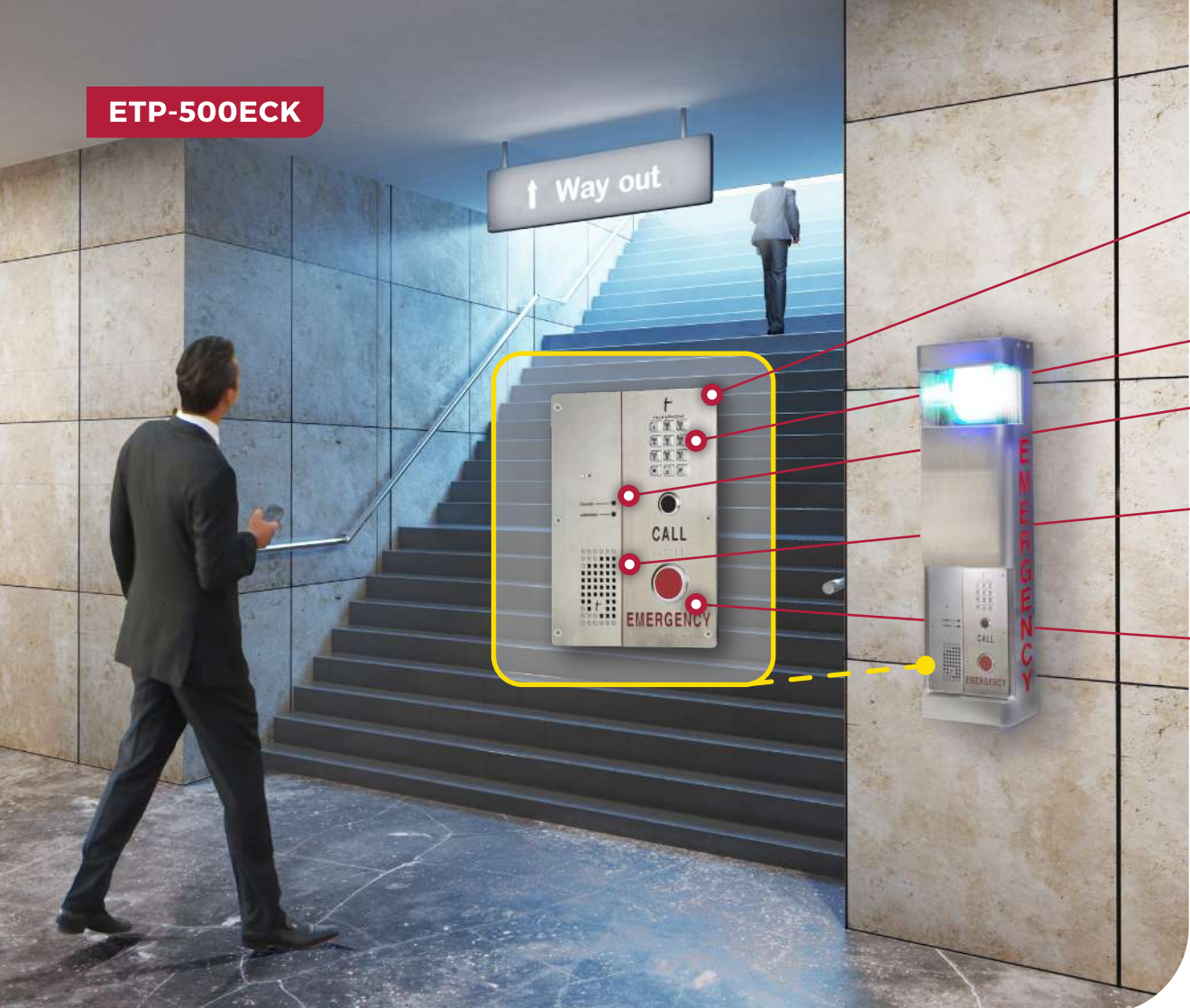
	(A)	(B)	(C)
Model Series	Form Factor	Finish	Lettering
ETP-SM	-1 Basic surface mount for call station only CR Hooded surface mount with hinged door and acrylic spacer for a card reader (provided by others) H-1 Hooded surface mount L Lighted surface mount—includes light above call station	-BL Painted blue -BK Painted black -GN Painted green -OR Painted orange -RD Painted red -SS Stainless steel finish -WH Painted white -YE Painted yellow	[Leave Blank] Includes lettering—to be specified at time of order -NL No lettering
Note		Custom paint colors available upon request.	
Example #1	ETP-SM	L	-YE
Example #2	ETP-SM	H-1	-BK
Example #3	ETP-SM	CR	

ANALOG AND IP CALL STATION SOLUTIONS

Talkaphone's collection of ADA-compliant analog and IP ADA-compliant call stations go beyond safety and emergency communications with a clean and simple interface. For indoor or outdoor applications, every Talkaphone call station guarantees exceptional sound clarity and sleek, contemporary design.



ETP-500ECK



GENERAL DETAILS

- Ability to automatically identify attendant of location of calling phone by recorded message
- Optional keypad configuration available
- Two LED indicators for hearing impaired (calling, answered)
- Auxiliary input and outputs to integrate with CCTV, Blue Light, Scream Alert™ and other devices
- Raised letter and braille signage for ADA compliance

AVAILABLE OPTIONS

- Fixed camera option in housing
- Automated External Defibrillator (AED) in housing
- Emergency trip button for mass transit applications can be engaged to halt oncoming train in an emergency

MODEL VARIANTS



ANALOG

ETP-500E



IP

VOIP-220C3-WAV1



IP

VOIP-600ECK

CALL STATION COMPARISON TABLE

Feature	Benefit	ETP-500 Series	VOIP-500 Series	VOIP-600 Series	VOIP-220 Series
Analog Telephone Line Support	<ul style="list-style-type: none"> Telephone line powered—local battery backup not required, only provide backup power to phone system or service provider equipment 	●	N/A		
Ethernet (IP) Support	<ul style="list-style-type: none"> Leverages modern Ethernet network infrastructure 	N/A	●		
Session Initiation Protocol (SIP) Support	<ul style="list-style-type: none"> Compatible with most SIP-enabled PBX platforms (e.g., Alcatel-Lucent, Avaya, Cisco, Grandstream, Mitel) 	N/A	●		
Powered by Analog Telephone Line	<ul style="list-style-type: none"> Telephone line powered—local battery backup not required, only provide backup power to phone system or service provider equipment 	●	N/A		
Power over Ethernet (PoE) Support	<ul style="list-style-type: none"> Consolidates data and power cabling to a single cable (up to 100 meters) 	N/A	●		
12/24 VDC or 24VAC Power Supply Support	<ul style="list-style-type: none"> Supports a local regulated low voltage power supply 	N/A	●	N/A (24VDC only)	
Primary Push Button	<ul style="list-style-type: none"> Prominent 1.375-inch push button for use by a person in distress 	●			
Secondary Push Button	<ul style="list-style-type: none"> Smaller 0.78-inch push button for non-emergency situations 	○			N/A
Keypad	<ul style="list-style-type: none"> Provides capability for manual dialing or additional speed dial keys 	○			N/A
Half-duplex Hands-free Communication	<ul style="list-style-type: none"> Compatible with analog telephone line power 	●	N/A		
Full Duplex Hands-free Communication	<ul style="list-style-type: none"> Full simultaneous audio during a telephone call 	N/A	●		
Handset Only Communication	<ul style="list-style-type: none"> Enables private conversations Suitable for environments where hands-free communication is not feasible 	○		N/A	
Combination Hands-free/Handset	<ul style="list-style-type: none"> Enables switching between public and private conversations Suitable for environments where hands-free communication is sometimes feasible 	N/A	○	N/A	
Auxiliary Input(s)	<ul style="list-style-type: none"> Enables a third-party system or device to trigger a phone call through a dry contact closure 	○ One (1) available with optional ETP-AUXIN-KIT	● Three (3) built-in		N/A

● = Standard ○ = Option available N/A = Not Available

CALL STATION COMPARISON TABLE CONT.

Feature	Benefit	ETP-500 Series	VOIP-500 Series	VOIP-600 Series	VOIP-220 Series
Auxiliary Output(s)	<ul style="list-style-type: none"> Provides a dry contact closure to trigger a blue light to flash or to a third-party system (access control, camera, etc.) 	● Two (2) built-in	● Three (3) built-in		● One (1) built-in
Marine Grade 316 Stainless Steel Faceplate	<ul style="list-style-type: none"> Vandal resistant and robust design Weather-resistant 	●	N/A (Brushed 316 stainless steel signage panel on the right with UV-resistant Polyethylene Terephthalate (PET) dead-front signage panel on the left)		●
IP66 Construction	<ul style="list-style-type: none"> Weather-resistant 		●		
Raised Letter/ Braille Signage	<ul style="list-style-type: none"> ADA compliant Compliant with the International Building Code (IBC), ADAAG, ICC A117.1, and NFPA 72 		●		
Dedicated Call Status LEDs	<ul style="list-style-type: none"> Conveys the status of the call to the hearing impaired through dedicated LEDs for "CALLING" and "ANSWERED" 	●		N/A	N/A (One (1) dual-purpose LED for "CALLING" and "ANSWERED")
Backlit Dead-front Call Progress Signage	<ul style="list-style-type: none"> Conveys the status of the call to the hearing impaired through backlit signage for "CALLING", "ANSWERED", and "HELP ON THE WAY" 	N/A		●	N/A
Autodials Phone Numbers	<ul style="list-style-type: none"> Dials phone numbers in round robin fashion in the event an answering point does not answer or is busy 	● Up to two (2) phone numbers	● Up to six (6) phone numbers		
Voice Message	<ul style="list-style-type: none"> Identifies physical location of call station through a prerecorded voice message 		●		
IP Camera Option	<ul style="list-style-type: none"> Captures video surveillance for call station activation from pre-roll (i.e. person approaching call station) to end of event Camera is a separate IP device—allowing for greater flexibility with video management systems or network video recorders 		○		
Mass Notification	<ul style="list-style-type: none"> Receive Wide-Area Emergency Broadcast System (WEBS®) audio notifications during an event Built-in hands-free speaker provides output to areas requiring less coverage Line level output enables alerting of a larger public area 	N/A		●	N/A
Limited Warranty	<ul style="list-style-type: none"> 2-year limited warranty 		●		

● = Standard ○ = Option available N/A = Not Available

ANALOG CALL STATIONS



ETP-500ECK



ETP-500H

ETP-500 Series outdoor-rated, ADA-compliant hands-free call stations go beyond emergency communications with a clean and simple interface, 316 marine grade stainless steel and are IP66 water rated for harsh environments.

FEATURES

- Uses regular phone lines for communications and function:
- No power supply or battery back-up needed
- Built-in auto-dialer can dial two numbers: if first number doesn't answer or is busy, dials next number
- Auto-answer allows security to monitor and initiate calls with the unit
- Automatically identify attendant of location of calling phone by recorded message and digital display
- Auxiliary input and outputs to integrate with CCTV, Blue Light, Scream Alert™ and other devices

Model Series	(A) Primary Button + Signage	(B) Secondary Button + Signage	(C) Keypad	(D) Handset	(E) Camera
ETP-500	<p>C "CALL" signage in black with red primary button</p> <p>E "EMERGENCY" signage in red with red primary button</p> <p>H "HELP" signage in red with red primary button</p> <p>N No primary signage, no primary button</p> <p>S No primary signage, red primary button</p>	<p>C "CALL" signage in black with black secondary button</p> <p>I "INFO" signage in black with black secondary button</p> <p>S No secondary signage, black secondary button</p>	<p>[Leave Blank] No keypad</p> <p>K Built-in keypad can be used to dial any phone number allowed by telephone services</p> <p>K2 Built-in keys 0 through 9 can be used to autodial a preprogrammed phone number</p>	<p>[Leave Blank] No handset</p> <p>F Handset with push-to-talk switch, 20-inch armored cord—no hands-free speaker/microphone</p> <p>G Handset with 2-step volume control switch, 20-inch armored cord—no hands-free speaker/microphone</p> <p>P Handset with 20-inch armored cord—no hands-free speaker/microphone</p>	<p>[Leave Blank] No integrated camera</p> <p>3 Integrated analog camera</p> <p>3AX Integrated Axis P1265 IP camera</p> <p>3IP Integrated KT&C IP camera</p>
Note					
Example #1	ETP-500	E	C	K	
Example #2	ETP-500	E	I		3IP

IP CALL STATIONS

The VOIP-220 Series Call Stations are built with IP66-rated, vandal resistant marine grade stainless steel. The units offer exceptional sound clarity during two-way communication, and support standard Session Initiation Protocol (SIP) compliant to RFC 3261.



VOIP-221H3-WAV1

FEATURES

- Supports standard Session Initiation Protocol (SIP), RFC 3261
- Remote software upgrade, configuration, and monitoring
- Power over Ethernet (PoE, 802.3af), local 19-27 VDC
- Built-in auto-dialer can dial up to six numbers: if first number doesn't answer or is busy, dials next number
- Compatible with Avaya Aura®, Avaya IP Office™, and Cisco Unified Communications Manager (Unified CM)

	(A)	(B)	(C)	(D)
Model Series	Form Factor	Button + Signage	Camera	WaveSense
VOIP-22	0 Flush mount configuration	C "CALL" signage in black with black button	[Leave Blank] No integrated IP camera	[Leave Blank] Tactile button, no WaveSense sensor
	1 Surface mount configuration	H "HELP" signage in red with red button	3 Integrated KT&C IP camera	-WAV1 Built-in WaveSense sensor replaces tactile button
		N No signage, no button	3AX Integrated Axis P1265 IP camera	
Note				
Example #1	VOIP-22	0	C	3
Example #2	VOIP-22	1	H	-WAV1

IP CALL STATIONS CONT.



VOIP-500E

VOIP-500 Series outdoor-rated, ADA-compliant hands-free voice over IP (VOIP) call stations go beyond emergency communications with intelligible audio paging, silent monitoring and advanced self-diagnostic and reporting features.

FEATURES

- LED indicators for hearing impaired (call placed, call received, help on the way)
- Built-in auto-dialer can dial six numbers: if first number doesn't answer or is busy, dial next number
- Auto-answer allows security to monitor and initiate calls with the unit
- Automatically inform the attendant of an IP call station's location via recorded message
- Self-diagnostic testing of built-in buttons, microphone and speaker on schedule and fault reporting

	(A) Primary Button + Signage	(B) Secondary Button + Signage	(C) Keypad	(D) Handset	(E) Camera
Model Series	VOIP-500	VOIP-500	VOIP-500	VOIP-500	VOIP-500
	<p>C "CALL" signage in black with red primary button</p> <p>E "EMERGENCY" signage in red with red primary button</p> <p>H "HELP" signage in red with red primary button</p> <p>N No primary signage, no primary button</p> <p>S No primary signage, red primary button</p>	<p>C "CALL" signage in black with black secondary button</p> <p>I "INFO" signage in black with black secondary button</p> <p>S No secondary signage, black secondary button</p>	<p>[Leave Blank] No keypad</p> <p>K Built-in keypad</p>	<p>[Leave Blank] No handset</p> <p>F Handset with push-to-talk switch, 20-inch armored cord—no hands-free speaker/microphone</p> <p>FM Handset with push-to-talk switch, 20-inch armored cord, and hands-free speaker/microphone</p> <p>G Handset with 2-step volume control switch, 20-inch armored cord—no hands-free speaker/microphone</p> <p>GM Handset with 2-step volume control switch, 20-inch armored cord, and hands-free speaker/microphone</p> <p>P Handset with 20-inch armored cord—no hands-free speaker/microphone</p> <p>PM Handset with 20-inch armored cord and hands-free speaker/microphone</p>	<p>[Leave Blank] No integrated camera</p> <p>3 Integrated KT&C IP camera</p> <p>3AX Integrated Axis P1265 IP camera</p>
Note					
Example #1	VOIP-500	E	C	K	
Example #2	VOIP-500	N			P

IP CALL STATIONS CONT.



VOIP-600E1

VOIP-600 Series IP call stations feature a clean and simple interface with backlit call progress signage for the hearing impaired. The units are constructed of 316 marine grade stainless steel and are IP66 rated for harsh environments.

FEATURES

- Exceptional sound clarity during conversation (over 90dB, configurable) and paging (over 100dB, configurable)
- Unit can be paged remotely as part of Talkaphone’s Wide-area Emergency Broadcast System (WEBS®) or by placing a call into the unit
- Additional Layer 2 switch Ethernet port to connect other devices (e.g. IP Video Cameras)
- Supports standard SIP protocol
- Power over Ethernet (PoE, 802.3af), 12V DC, 24V AC/DC

Model Series	(A) Primary Button + Signage	(B) Secondary Button + Signage	(C) Keypad	(D) Camera
VOIP-600	<p>C “CALL” signage in black with red primary button</p> <p>E “EMERGENCY” signage in red with red primary button</p> <p>H “HELP” signage in red with red primary button</p> <p>N No primary signage, no primary button</p> <p>S No primary signage, red primary button</p>	<p>C “CALL” signage in black with black secondary button</p> <p>I “INFO” signage in black with black secondary button</p> <p>S No secondary signage, black secondary button</p>	<p>[Leave Blank] No keypad</p> <p>K Built-in keypad</p>	<p>[Leave Blank] No integrated camera</p> <p>3 Integrated KT&C IP camera</p> <p>3AX Integrated Axis P1265 IP camera</p>
Note				
Example #1	VOIP-600	H		3AX
Example #2	VOIP-600	E	C	K

BLUE LIGHT PHONE - PRODUCTS

WIRELESS



ETP-CI-4G-GSM
4G LTE GSM cellular interface for ETP-500 Series Analog Call Stations



ETP-CI-4G-V
Verizon 4G/LTE cellular interface for ETP-500 Series Analog Call Stations

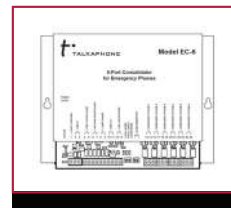


SLR-80-84
Solar system with 80W panel and 84Ah battery bank—for use with 4G/LTE cellular-enabled blue light phones



SLR-120-84
Solar system with 120-140W panel and 84Ah battery bank—for use with 4G/LTE cellular-enabled blue light phones

CALL ROUTING



EC-6
6-port analog call station telephone line consolidator



PBX-GS-6302
Grandstream PBX system supporting up to (1,000) basic SIP endpoints and (2) analog PSTN line ports (FXO)

ANSWERING POINT



AVM-1
IP Video Attendant Phone with capacitive touch monitoring display—supports up to (100) IP camera-enabled VOIP-220 Series IP Call Stations



AVM-3
IP Video Attendant Phone with capacitive touch monitoring display and physical keys—supports up to (100) IP camera-enabled VOIP-220 Series IP Call Stations



AVM-3-EXT
Backlit LCD extension module for AVM-3 IP Video Attendant Phone

EXTERNAL BLUE LIGHT



ETP-EL
120VAC LED blue light



ETP-EL12/24
12-24VDC or 24VAC LED blue light



ETP-MBKT
Mounting bracket for LED blue light

SWITCHED POWER



PCS-42-6
Power Charging System for switched power—includes 42Ah battery and 6A charger



PCS-84-10
Power Charging System for switched power—includes 84Ah battery bank and 10A charger



PCS-SD-277-250
Power Charging System transformer (250VA) to step down 308/277/208VAC to 120VAC



PCS-SD-277-350
Power Charging System transformer (350VA) to step down 308/277/208 VAC to 120VAC



PCS-SD-277-500
Power Charging System transformer (500VA) to step down 380/277/208 VAC to 120 VAC



PCS-SD-480-250
Power Charging System transformer (250VA) to step down 480/240 VAC to 120VAC

ACCESSIBILITY



AHLP-1
Active induction hearing loop panel for VOIP-500/VOIP-600 Series IP Call Stations. Requires external power supply.

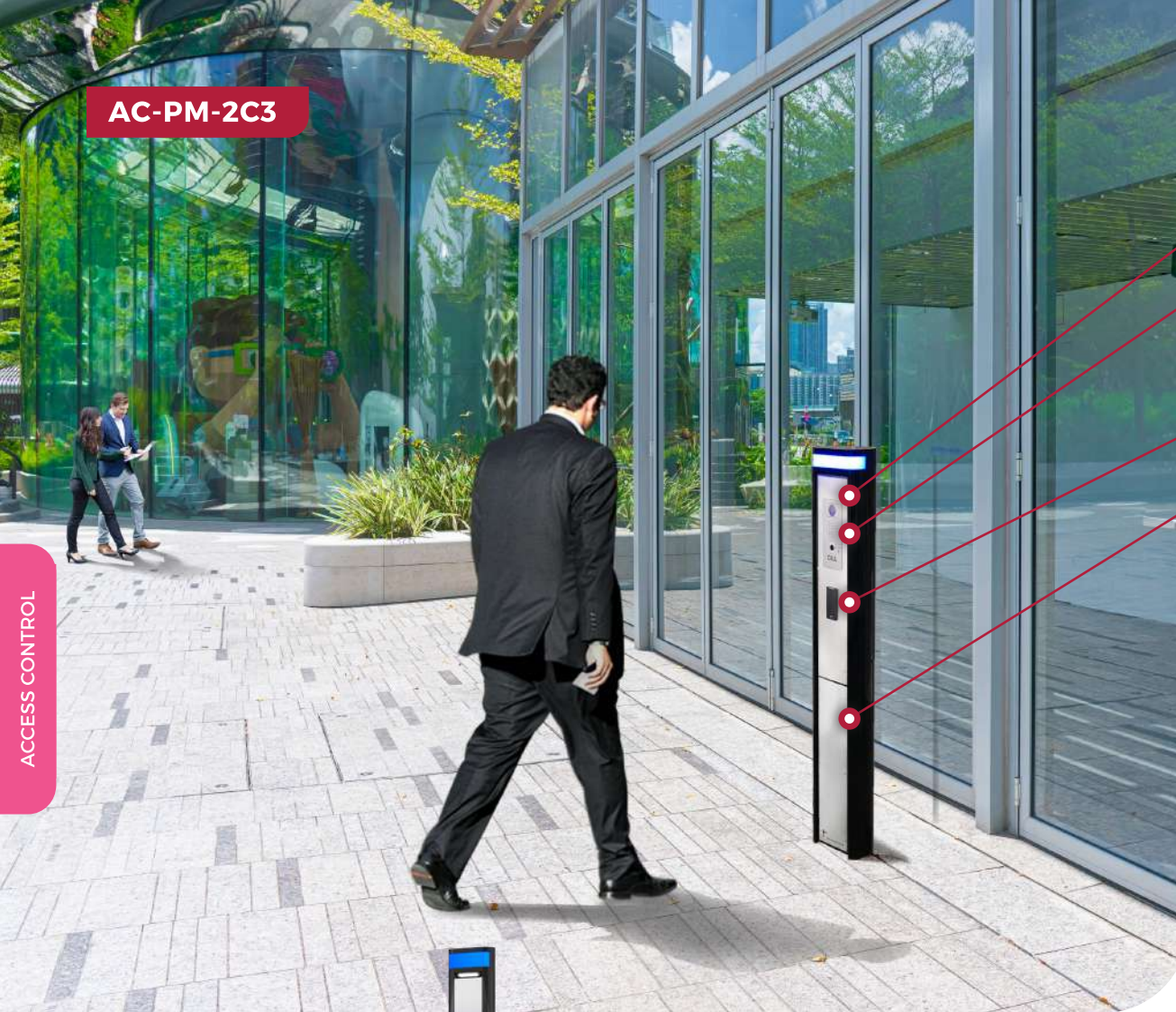
ACCESS CONTROL SOLUTIONS

The award-winning VIA™ Series is an architecturally designed line for modern entryways serving as the latest in access control technology. From pedestals to towers, the series' variety offers ideal solutions in a streamlined, economical design for locations with pedestrian traffic, parking access and walkway courtesy communication. Configurations include optional card reader, push plate switch, keypad and WaveSense technology.



AC-PM-2C3

ACCESS CONTROL



GENERAL DETAILS

- ONVIF-compliant IP camera
- Call station provides exceptional sound clarity and supports standard Session Initiation Protocol (SIP) compliant to RFC 3261
- Card reader option
- Streamlined, economical design for building entryways

AVAILABLE OPTIONS

- IP door intercom system starter kit includes the VOIP-221C3 two-way call station with an ONVIF-compliant IP camera and IP video attendant station (Model VOIP-221C3-SYS).
- VIA™ Series is easily installed as a free-standing call station
- AVM-1 IP Video Attendant Phone supports up to (100) VOIP-220 Series IP Call Stations
- Optional card reader, push plate, touchless entry, keypad, and emergency trip switch

MODEL VARIANTS

TOWER

AC-MT-1C3

PEDESTAL

AC-PM-4C3

WALL MOUNT

AC-WM-6C-FLB

IP VIDEO ATTENDANT PHONE

AVM-1



ACCESS CONTROL COMPARISON TABLE

Feature	Benefit	VIA Series Pedestal (AC-PM)	VIA Series Tower (AC-MT)	VIA Series Wall Mount (AC-WM)	ETP-GP Series
IP Call Station	<ul style="list-style-type: none"> Communicate with authorized personnel for identity verification or assistance Receipt of a remote DTMF command, during an active call, triggers a relay output to the access control system in order to remotely unlock a door 				O
Fixed Camera	<ul style="list-style-type: none"> Captures video surveillance for call station activation from pre-roll (i.e. person approaching access control station) to end of event 		O		O (Available when configured with appropriate call station model)
Card Reader	<ul style="list-style-type: none"> Provides contactless card reader for single-factor authentication of identity 		O		O (Available when configured with appropriate call station model)
Card Reader with Keypad	<ul style="list-style-type: none"> Combines a contactless card reader with a keypad for personal identification number (PIN) entry—supporting two-factor authentication of identity 		O		O (Available when configured with appropriate call station model)
Push Plate Switch	<ul style="list-style-type: none"> Includes a mechanically actuated push plate switch to trigger an automatic door 		O		N/A
Touchless Push Plate Switch	<ul style="list-style-type: none"> Includes a touchless push plate switch to trigger an automatic door Provides a contactless, hygienic method to initiate door access 		O		N/A
36-inch Push Plate Switch	<ul style="list-style-type: none"> Includes a mechanically actuated push plate switch (36-inches tall) to trigger an automatic door 		O		N/A
Access Control LED Light Band	<ul style="list-style-type: none"> Blue constant-on mode indicates an available access control station LED Light Band will change from blue to green when the access control system has unlocked the door 	●	N/A	●	N/A
Flashing Blue LED Light Band	<ul style="list-style-type: none"> Constant-on mode serves as a deterrent Provides a sense of safety—indicates locations with call stations to request assistance Flashes when call station is activated to allow public safety or first responders to quickly identify and move toward an event 	O	●	O	N/A
LED Panel Light	<ul style="list-style-type: none"> Illuminates faceplate 	N/A		●	O (Available when configured with surface mount Model ETP-SML)
Limited Warranty	<ul style="list-style-type: none"> 5-year limited warranty on non-electronic components 2-year limited warranty on electronic components 			●	

● = Standard O = Option available N/A = Not Available

VIA™ SERIES TOWERS

The VIA™ Series tower is an ideal solution for locations with foot traffic, visitors, and staff. The always-lit blue LED light band provides high visibility and gives pedestrians a sense of security. At the push of a button, the blue LED light band begins to flash drawing immediate attention to the two-way communication tower. VOIP-220 Series Compact IP Call Station included.

FEATURES

- ADA-compliant; rated NEMA 3R
- Vandal-resistant with a coating designed to resist extreme weather conditions
- 16 GA, steel construction
- Available design options for custom signage, instructions, and color
- Also available with card reader and push plate switch options



AC-MT-1C3

Model Series	(A) Configuration Number	(B) Call Station Model	(C) Only Call Station	(D) Card Reader Type	(E) Touchless Push Plate Switch	(F) LED Light Band Operation
AC-MT-	1 Call station only	C Includes VOIP-220C	[Leave Blank] Does not apply	[Leave Blank] No keypad	[Leave Blank] No touchless option	[Leave Blank] Blue constant-on, switches to green constant-on
	2 Call station with card reader	C3 Includes VOIP-220C3	-OCS Include only Call Station (only available for 2, 3, and 4 configurations)	-K With keypad	-TL With touchless push plate switch	-FLB Blue constant-on, switches to blue flashing
	3 Call station with push plate switch	H Includes VOIP-220H				
	4 Call station with card reader and push plate switch	H3 Includes VOIP-220H3				
	5 Call station with 36-inch push plate switch	NCS Does not include Call Station				
Note	Cannot combine with (B), (C), or (F).	Cannot combine with (A), (C), (D), or (F).	Cannot combine with (A), (B), (D), or (F).	Cannot combine with (B), (C), or (F).	Cannot combine with (F).	Cannot combine with (A), (B), (C), (D), or (E).
Example #1	AC-MT-	2	H	-OCS		
Example #2	AC-MT-	4	C3		-K	-TL

VIA™ SERIES PEDESTALS



AC-PM-4C3

The VIA™ Series access and courtesy communication pedestal is a connection point between you and your destination. The pedestal is a streamlined, economical design for building entrance ways. VOIP-220 Series Compact IP Call Station included.

FEATURES

- Streamlined, economical design for building entrance ways
- Ideal for building access, parking access, and walkway courtesy communication
- ADA-compliant
- Also available with card reader and push plate switch
- Blue LED light band changes to green to indicate when door is unlocked

Model Series	(A) Configuration Number	(B) Call Station Model	(C) Only Call Station	(D) Card Reader Type	(E) Touchless Push Plate Switch	(F) LED Light Band Operation
AC-PM-	1 Call station only 2 Call station with card reader 3 Call station with push plate switch 4 Call station with card reader and push plate switch 5 Call station with 36-inch push plate switch	C Includes VOIP-220C C3 Includes VOIP-220C3 H Includes VOIP-220H H3 Includes VOIP-220H3 NCS Does not include Call Station	[Leave Blank] Does not apply -OCS Include only Call Station (only available for 2, 3, and 4 configurations)	[Leave Blank] No keypad -K With keypad	[Leave Blank] No touchless option -TL With touchless push plate switch	[Leave Blank] Blue constant-on, switches to green constant-on -FLB Blue constant-on, switches to blue flashing
Note	Cannot combine with (B), (C), or (F).	Cannot combine with (A), (C), (D), or (F).	Cannot combine with (A), (B), (D), or (F).	Cannot combine with (B), (C), or (F).	Cannot combine with (F).	Cannot combine with (A), (B), (C), (D), or (E).
Example #1	AC-PM-	3	NCS			
Example #2	AC-PM-	4	C3		-K	-TL

VIA™ SERIES WALL MOUNTS



AC-WM-6C

The VIA™ Series access and entry communication wall mount is a connection point between you and the world- simply connect and communicate. This stylized wall mount is available with optional features and includes an always-lit blue LED light band. VOIP-220 Series Compact IP Call Station included.

FEATURES

- ADA-compliant assistance request and communication point
- Blue LED light band changes to green with contact closure
- Available with an always-lit blue LED light band that flashes when the call station is activated
- Also available with card reader and push plate switch
- Vandal-resistant with a coating designed to resist extreme weather conditions

Model Series	(A) Configuration Number	(B) Call Station Model	(C) Only Call Station	(D) Card Reader Type	(E) Touchless Push Plate Switch	(F) LED Light Band Operation
AC-WM-	1 Call station only	C Includes VOIP-220C	[Leave Blank] Does not apply	[Leave Blank] No keypad	[Leave Blank] No touchless option	[Leave Blank] Blue constant-on, switches to green constant-on
	2 Call station with card reader	C3 Includes VOIP-220C3	-OCS Include only Call Station (only available for 2, 3, and 4 configurations)	-K With keypad	-TL With touchless push plate switch	-FLB Blue constant-on, switches to blue flashing
	3 Call station with push plate switch	H Includes VOIP-220H				
	4 Call station with card reader and push plate switch	H3 Includes VOIP-220H3				
	6 Call station with "EMERGENCY TRIP" cut-off switch	NCS Does not include Call Station				
Note	Cannot combine with (B), (C), or (F).	Cannot combine with (A), (C), (D), or (F).	Cannot combine with (A), (B), (D), or (F).	Cannot combine with (B), (C), or (F).	Cannot combine with (F).	Cannot combine with (A), (B), (C), (D), or (E).
Example #1	AC-WM-	3	NCS			
Example #2	AC-WM-	4	C3		-K	-TL

ACCESS CONTROL

GP SERIES GOOSENECK PEDESTAL MOUNTS

Freestanding Gooseneck Pedestal allows an Emergency / Information or Access phone to be mounted at car and/or truck height practically anywhere. The gooseneck pedestal is ideal for drive-up applications including garage access control and entry.

FEATURES

- Constructed of vandal resistant 1/8" thick steel
- Add any ETP-SM Series surface mount (sold separately) with an ETP-500 Series, VOIP-500 Series, or VOIP-600 Series call station (sold separately)
- Standard pedestal is painted safety yellow
- ADA-compliant
- Variety of signage, graphics, and color choices available



ETP-GP-D
(shown with VOIP-600E)

ETP-GP-C
(shown with ETP-SMCR and VOIP-600H)

Model Series	(A) Form Factor	(B) Finish
ETP-GP	-C For car height -D For both car and truck heights -T For truck height	[Leave Blank] Painted safety yellow -BL Painted blue -BK Painted black -GN Painted green -OR Painted orange -RD Painted red -SS Stainless steel finish -WH Painted white
Note		Custom paint colors available upon request.
Example #1	ETP-GP	-C
Example #2	ETP-GP	-T

ACCESS CONTROL

ACCESS CONTROL - PRODUCTS

COMPACT IP CALL STATIONS



The VOIP-220 Series Compact IP Call Stations are designed specifically for access control—these call stations provide video, two-way audio communication, and a relay output at entranceways.

The VOIP-220 Series Call Stations are IP66-rated and constructed of, vandal resistant marine grade stainless steel.

VOIP-220 Series

The units offer exceptional sound clarity during two-way communication, and support standard Session Initiation Protocol (SIP) compliant to RFC 3261.

Its built-in auto-dialer can dial up to six (6) answering points in round robin fashion.

ANSWERING POINT



AVM-1

IP Video Attendant Phone with capacitive touch monitoring display—supports up to (100) IP camera-enabled VOIP-220 Series IP Call Stations



AVM-3

IP Video Attendant Phone with capacitive touch monitoring display and physical keys—supports up to (100) IP camera-enabled VOIP-220 Series IP Call Stations



AVM-3-EXT

Backlit LCD extension module for AVM-3 IP Video Attendant Phone

WAVESENSE FOR TOUCHLESS CALL ACTIVATION OR AUTOMATIC DOORS



WAV-1-FM

WaveSense “WAVE TO CALL” touchless sensor add-on for IP Call Stations or access control systems—flush mounted



WAV-1-SM

WaveSense “WAVE TO CALL” touchless sensor add-on for IP Call Stations or access control systems—surface mounted



WAV-1-FM-WTO

WaveSense “WAVE TO OPEN” touchless sensor add-on for access control systems—flush mounted



WAV-1-SM-WTO

WaveSense “WAVE TO OPEN” touchless sensor add-on for access control systems—surface mounted

CALL ROUTING



PBX-GS-6302

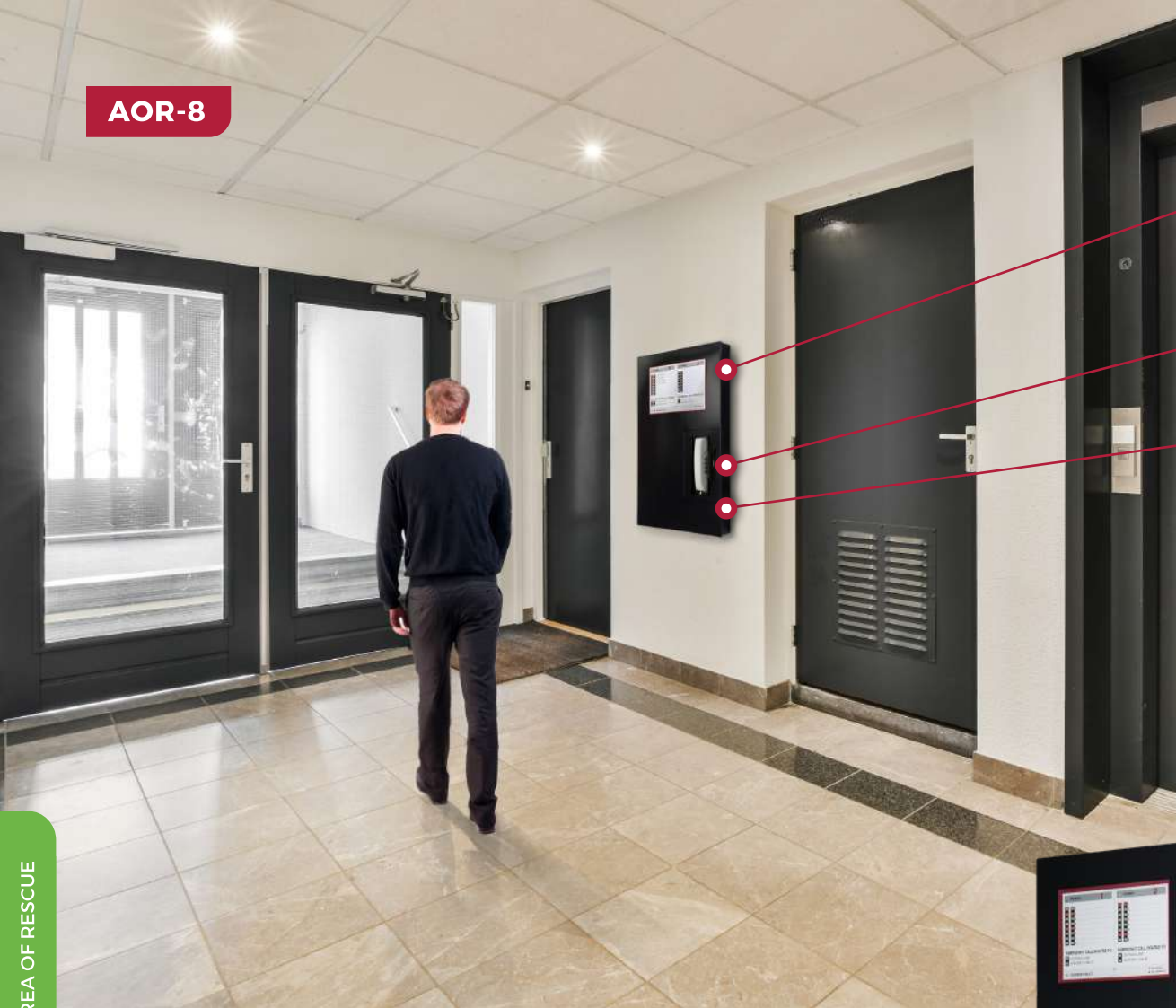
Grandstream PBX system supporting up to (1,000) basic SIP endpoints and (2) analog PSTN line ports (FXO)

FIXED STATION, ANALOG, AND IP AREA OF RESCUE SOLUTIONS

Talkaphone's analog and IP Area of Rescue (AOR) systems provide two-way, hands-free communication between each required location and command center approved by local authorities having jurisdiction (AHJ). From supporting 5 to 160 ADA-compliant AOR stations, Talkaphone offers a variety of solutions for any application.



AOR-8



GENERAL DETAILS

- Automatically and continuously monitors for integrity (opens, shorts, and system ground fault) and alerts by LED and sounder
- On-site calling requires no outside phone lines
- Off-site calling through a standard phone line

AVAILABLE OPTIONS

- Trim ring to flush mount

AREA OF RESCUE

MODEL VARIANTS

ANALOG



AOR-5

NEW



AOR-8



AOR-32

IP



AOR-IP-80-CU

AOR COMPARISON TABLE

NEW

Feature	Benefit	Fixed Station Analog AOR	Analog AOR	IP AOR
Maximum Station Count	<ul style="list-style-type: none"> Designed for specific multi-level building sizes ranging from low- to high-rises 	5 or 10	16, 24, or 32	40, 80, 120, or 160
Home Run/Star Wiring Based	<ul style="list-style-type: none"> Leverages existing cabling infrastructure Centralized power source Facilitates system deployment 	●		N/A
Ethernet (IP) Network Based	<ul style="list-style-type: none"> Leverages modern Ethernet network infrastructure Ideal solution for new construction, rehabilitation, redevelopment, or modernization (i.e., infrastructure upgrade) projects 	N/A		●
Stations Powered by Command Unit	<ul style="list-style-type: none"> No additional power required for each station Single-cable connection to each station 	●		N/A
Stations Powered by IP Network (PoE)	<ul style="list-style-type: none"> No additional power required for each station Single-cable connection to each station 	N/A		●
4-hour Battery Backup	<ul style="list-style-type: none"> Provides 4-hours of standby and 5-minutes of operation on battery backup 	N/A	●	○ (For Command Units only)
24-hour Battery Backup	<ul style="list-style-type: none"> Provides 24-hours of standby and 5-minutes of operation on battery backup 	●	○	○ (For Command Units only)
Maximum On-premise Answering Points	<ul style="list-style-type: none"> Provides additional on-site answering points (or central control point) to meet the constantly attended location requirement of NFPA 72 	Command Unit with up to two (2) Sub-Command Units	One (1)	Multiple—dependent on network
Analog Trunk (PSTN) Support for Off-site Dialing	<ul style="list-style-type: none"> Meets the requirements of NFPA 72—In the event the on-site answering point (or central control point) cannot be constantly attended, the system must forward calls to a constantly attended approved location, such as a central monitoring station, a communications center, or 911 Leverages existing telephony infrastructure 	●		●
SIP Trunk (PSTN) Support for Off-site Dialing	<ul style="list-style-type: none"> Meets the requirements of NFPA 72—In the event the on-site answering point (or central control point) cannot be constantly attended, the system must forward calls to a constantly attended approved location, such as a central monitoring station, a communications center, or 911 Leverages modern telephony infrastructure 	N/A		●
Open/Short Fault Supervision for Stations	<ul style="list-style-type: none"> Meets the Class B pathway requirements of NFPA 72—all pathways between remote area of rescue stations and the central control point shall be monitored for integrity 	●		N/A
IP Network Pathway Supervision for Stations	<ul style="list-style-type: none"> Meets the Class N pathway requirements of NFPA 72—all pathways between remote area of rescue stations and the central control point shall be monitored for integrity 	N/A		●
System Ground Fault Supervision	<ul style="list-style-type: none"> Meets the Class B pathway requirements of NFPA 72—all pathways between remote area of rescue stations and the central control point shall be monitored for integrity 	●		N/A
Low Battery Backup Supervision	<ul style="list-style-type: none"> Meets the trouble signal requirements of NFPA 72—failure of either the primary or secondary power supply shall result in a trouble signal 	●		N/A

● = Standard ○ = Option available N/A = Not Available

AREA OF RESCUE

AOR COMPARISON TABLE CONT.

NEW

Feature	Benefit	Fixed Station Analog AOR	Analog AOR	IP AOR
Primary Power Supervision	<ul style="list-style-type: none"> Meets the trouble signal requirements of NFPA 72—failure of either the primary or secondary power supply shall result in a trouble signal 		●	
Fault Output to Addressable Fire Panel	<ul style="list-style-type: none"> Meets the trouble signal requirements of NFPA 72—trouble signals and their restoration to normal shall be indicated at the fire alarm control unit for protected premises alarm systems, building fire command center for in-building fire emergency voice/alarm communications systems, or central station Triggers an addressable fire panel to provide a visual and/or audible indicator for faults and their restoration to normal 		●	
All Call to Stations	<ul style="list-style-type: none"> Call into all stations on the system from either the Command Unit or through a remote PSTN connection to make an announcement 	●		N/A
ADAAG Compliant	<ul style="list-style-type: none"> Designed to meet the accessibility requirements of the ADA Standards for Accessible Design 		●	
International Building Code (IBC) Compliant	<ul style="list-style-type: none"> Designed to meet the two-way communication system requirements of the ICC A117.1 standard 		●	
ICC A117.1 Compliant	<ul style="list-style-type: none"> Designed to meet the accessibility requirements of the ICC A117.1 standard 		●	
NFPA 72 Compliant	<ul style="list-style-type: none"> Designed to meet the two-way emergency communication system requirements of the National Fire Alarm and Signaling Code (NFPA 72) 		●	
Limited Warranty	<ul style="list-style-type: none"> 5-year limited warranty 		●	

● = Standard ○ = Option available N/A = Not Available

AREA OF RESCUE

NEW

FIXED STATION ANALOG AOR



AOR-10

Fixed Station Analog AOR Command Units accommodate up to 5 or 10 Area of Rescue analog stations. Talkaphone's AOR Command units are fully compliant with the IBC (2015) §1009, ADAAG §7, ICC A117. 1 Ch. 7, and NFPA 72 (2016) §24.10.

FEATURES

- AOR command units are fully compliant with the NFPA 72 (2016) §24.10, IBC (2018) §1009, ICC A117.1 (2017) Ch. 7, and ADAAG (2010) Ch. 7
- Automatically and continuously supervises for integrity (opens, shorts, and system ground fault), low battery backup, and AC power fail (primary power loss)—alerts by relay output to an addressable fire panel, LED, and sounder
- Accommodates up to five (5) or ten (10) ADA-compliant area of rescue stations
- Stations receive power from command unit, powered by 24VDC
- LEDs on command unit indicate calling station and line status
- Supports up to two (2) Sub-Command Units for multiple on-site answering points
- On-site calling requires no outside phone line
- Off-site calling requires one (1) analog phone line (PSTN line)
- Solid LED indicates active call. Flashing LEDs indicate stations that are waiting to be answered. When first call is completed, second call is automatically placed and Command Unit rings. Multiple calls are placed in queue on a “first-in, first-out (FIFO)” basis.
- Built-in 24-hour battery backup in the event of primary power failure
- Includes built-in handset with volume control
- Dedicated talk/hold buttons for each area of rescue station
- Disconnect button for emergency services (i.e. connection through analog phone line/PSTN line)
- Options available for surface mounting, flush mounting, and cabinet with door

Model Series	(A) Station Count Support	(B) Form Factor	(C) Latch (only for -D configurations)
AOR	-5 Supports up to five (5) stations	[Leave Blank] Standard enclosure without door	[Leave Blank] Standard enclosure without door and latch
	-10 Supports up to ten (10) stations	-D Enclosure with door	SL Standard twist latch KL Keyed latch
Note			
Example #1	AOR	-5	-D
Example #2	AOR	-10	

System Configurator



AREA OF RESCUE

NEW

FIXED STATION ANALOG AOR – PRODUCTS

AOR STATIONS



AOR-CSE-FM
Analog AOR Station with EMERGENCY signage and flush mount



AOR-CSE-NM
Analog AOR Station with EMERGENCY signage—mount not included



AOR-CSE-SM
Analog AOR Station with EMERGENCY signage and surface mount



AOR-CSE-FM-1RO
Analog AOR Station with EMERGENCY signage, one (1) relay output, and flush mount



AOR-CSE-NM-1RO
Analog AOR Station with EMERGENCY signage and one (1) relay output—mount not included



AOR-CSE-SM-1RO
Analog AOR Station with EMERGENCY signage, one (1) relay output, and surface mount

CELLULAR GATEWAY



AOR-CGW-4G-GSM
AT&T 4G/LTE cellular gateway for analog AOR systems—does not include MIMO antenna kit.



AOR-CGW-4G-V
Verizon 4G/LTE cellular gateway for analog AOR systems—does not include MIMO antenna kit.



AOR-CGW-ANT-6-KIT
MIMO antenna with 6ft. cable assembly. Includes U-bolts and 2-inch right-angle mounting bracket.



AOR-CGW-ANT-17-KIT
MIMO antenna with 17ft. cable assembly. Includes U-bolts and 2-inch right-angle mounting bracket.

SIGNAGE



ETP-SIGN
"AREA OF RESCUE" sign with self-adhesive, raised lettering, and braille



ETP-SIGN/R
"AREA OF REFUGE" sign with self-adhesive, raised lettering, and braille



ETP-SIGN/L
"AREA OF RESCUE ASSISTANCE" sign lighted in red LEDs



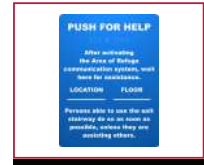
ETP-SIGN/LR
"AREA OF REFUGE" sign lighted in red LEDs



ETP-SIGN/LD
"AREA OF RESCUE ASSISTANCE" deluxe lighted sign



ETP-SIGN/LDR
"AREA OF REFUGE" deluxe lighted sign



ETP-SIGN-PFH
"PUSH FOR HELP" instructional sign with self-adhesive

SUB-COMMAND UNIT



AOR-SCU-1
Sub-Command Unit for Fixed Station Analog AOR Systems

FLUSH MOUNT TRIM RINGS FOR COMMAND UNIT



AOR-TR10
Flush mount trim ring for AOR-5 or AOR-10 Command Unit without door



AOR-TR10-D
Flush mount trim ring for AOR-5 or AOR-10 Command Unit with door

POWER SUPPLY



AOR-PSU-5-10
Class 2 power supply with enclosure for AOR-5 or AOR-10 Command Unit. 115VAC input, 12/24VDC output.

AREA OF RESCUE

EXPANDED ANALOG AOR

AOR Command Units accommodate up to 8, 16, 24, or 32 Area of Rescue analog stations. Talkaphone's AOR Command units are fully compliant with the IBC (2015) §1009, ADAAG §7, ICC A117.1 Ch. 7, and NFPA 72 (2016) §24.10.



AOR-16

AOR-32

FEATURES

- AOR command units are fully compliant with the IBC (2015) §1009, ADAAG §7, ICC A117.1 Ch. 7, and NFPA 72 (2016) §24.10
- Automatically and continuously monitors for integrity (opens, shorts, and system ground fault) and alerts by LED and sounder
- Accommodates 8, 16, 24, and 32 ADA-compliant area of rescue stations
- Stations receive power from command unit, powered by UPS
- LEDs on command unit indicate calling station and line status
- On-site calling requires no outside phone lines
- Off-site calling requires only one phone line for each set of 8 stations
- Solid LED indicates active call. Blinking LEDs indicate stations that are waiting to be answered. When first call is completed, second call is automatically placed and phone rings.
- Siren is activated when emergency call is first detected, shuts off when call has been answered
- Strobe is activated when emergency call is first detected and remains active for duration of call
- Built-in UPS provides 4-hour power back-up in case of power failure
- Includes built-in local phone
- Surface or flush mounting options

Command Units	
AOR-8	Supports up to 8 analog call stations
AOR-16	Supports up to 16 analog call stations
AOR-24	Supports up to 24 analog call stations
AOR-32	Supports up to 32 analog call stations

System Configurator



Expanded Analog AOR

EXPANDED ANALOG AOR – PRODUCTS

AOR STATIONS



AOR-CSE-FM
Analog AOR Station with EMERGENCY signage and flush mount



AOR-CSE-NM
Analog AOR Station with EMERGENCY signage—mount not included



AOR-CSE-SM
Analog AOR Station with EMERGENCY signage and surface mount



AOR-CSE-FM-1RO
Analog AOR Station with EMERGENCY signage, one (1) relay output, and flush mount



AOR-CSE-NM-1RO
Analog AOR Station with EMERGENCY signage and one (1) relay output—mount not included



AOR-CSE-SM-1RO
Analog AOR Station with EMERGENCY signage, one (1) relay output, and surface mount

CELLULAR GATEWAY



AOR-CGW-4G-GSM
AT&T 4G/LTE cellular gateway for analog AOR systems—does not include MIMO antenna kit.



AOR-CGW-4G-V
Verizon 4G/LTE cellular gateway for analog AOR systems—does not include MIMO antenna kit.



AOR-CGW-ANT-6-KIT
MIMO antenna with 6ft. cable assembly. Includes U-bolts and 2-inch right-angle mounting bracket.



AOR-CGW-ANT-17-KIT
MIMO antenna with 17ft. cable assembly. Includes U-bolts and 2-inch right-angle mounting bracket.

SIGNAGE



ETP-SIGN
“AREA OF RESCUE” sign with self-adhesive, raised lettering, and braille



ETP-SIGN/R
“AREA OF REFUGE” sign with self-adhesive, raised lettering, and braille



ETP-SIGN/L
“AREA OF RESCUE ASSISTANCE” sign lighted in red LEDs



ETP-SIGN/LR
“AREA OF REFUGE” sign lighted in red LEDs



ETP-SIGN/LD
“AREA OF RESCUE ASSISTANCE” deluxe lighted sign

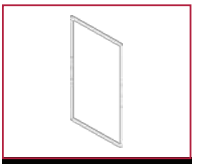


ETP-SIGN/LDR
“AREA OF REFUGE” deluxe lighted sign

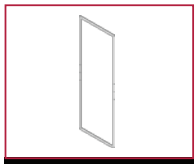


ETP-SIGN-PFH
“PUSH FOR HELP” instructional sign with self-adhesive

FLUSH MOUNT TRIM RINGS FOR COMMAND UNIT



AOR-TR16
Flush mount trim ring for AOR-8 or AOR-16 Command Units



AOR-TR32
Flush mount trim ring for AOR-24 or AOR-32 Command Units

IP AOR



AOR-IP-120-CU

Talkaphone's AOR-IP Series is an IP-based system accommodating up to 160 ADA-Compliant Area of Rescue IP Call Stations. The system offers capability for multiple IP command units, on-and off-premise communication, and IP network supervision.

FEATURES

- Area of Rescue IP Command Units are fully compliant with IBC (2015) §1009, ADAAG §7, ICC A 117.1 Ch. 7, and NFPA 72 (2016) §24.10
- An ideal solution for new construction, rehabilitation, redevelopment, or modernization (i.e., infrastructure upgrade) projects
- Supports up to 160 ADA compliant area of rescue stations
- Supports multiple on-premise answering points (i.e. command units)
- Supports off-site communication to a central monitoring station, a communications center, or 911 (requires analog trunk line or SIP trunk)
- Supports up to two (2) analog trunk (PSTN) lines or up to fifty (50) SIP trunk accounts (requires SIP service and Internet connectivity provided by others) for off-site communication
- Connect IP Call Stations, IP Command Units, and IP Supervisor to a Local Area Network (LAN)
- Available IP Supervisor automatically and continuously monitors for network pathway integrity between the IP Call Stations and IP Command Unit(s). If the network is down or if a network pathway is compromised, a contact closure is provided.
- IP Command Unit provides both an LCD and keys with LEDs to indicate IP Call Station line status (i.e. idle, ringing, or busy)
- Included Uninterruptible Power Supply (UPS) provides power backup in the event of a power source failure
- IP Command Unit can be either surface or flush-mounted. Optional trim ring is available.

Command Units	
AOR-IP-40-CU	Supports up to 40 IP call stations
AOR-IP-80-CU	Supports up to 80 IP call stations
AOR-IP-120-CU	Supports up to 120 IP call stations
AOR-IP-160-CU	Supports up to 160 IP call stations

System Configurator



AREA OF RESCUE

IP AOR - PRODUCTS

IP AOR STATIONS



AOR-IP-CSE-FM
IP AOR Station with EMERGENCY signage and flush mount



AOR-IP-CSE-NM
IP AOR Station with EMERGENCY signage-mount not included



AOR-IP-CSE-SM
IP AOR Station with EMERGENCY signage and surface mount

AUXILIARY COMMAND UNITS



AOR-IP-40-ACU
Auxiliary Command Unit for systems up to 40-stations-serves as a secondary answering point



AOR-IP-80-ACU
Auxiliary Command Unit for systems up to 80-stations-serves as a secondary answering point



AOR-IP-120-ACU
Auxiliary Command Unit for systems up to 120-stations-serves as a secondary answering point



AOR-IP-160-ACU
Auxiliary Command Unit for systems up to 160-stations-serves as a secondary answering point

SIGNAGE



ETP-SIGN
"AREA OF RESCUE" sign with self-adhesive, raised lettering, and braille



ETP-SIGN/R
"AREA OF REFUGE" sign with self-adhesive, raised lettering, and braille



ETP-SIGN/L
"AREA OF RESCUE ASSISTANCE" sign lighted in red LEDs



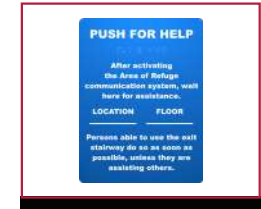
ETP-SIGN/LR
"AREA OF REFUGE" sign lighted in red LEDs



ETP-SIGN/LD
"AREA OF RESCUE ASSISTANCE" deluxe lighted sign



ETP-SIGN/LDR
"AREA OF REFUGE" deluxe lighted sign



ETP-SIGN-PFH
"PUSH FOR HELP" instructional sign with self-adhesive

UNINTERRUPTIBLE POWER SUPPLIES (UPSes)

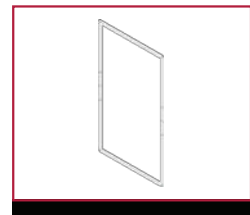


AOR-IP-UPS-CU-4H
4-hour uninterruptible power supply (UPS) for IP AOR Command Unit and IP Supervisor

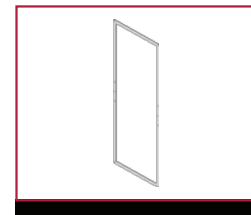


AOR-IP-UPS-CU-24H
24-hour uninterruptible power supply (UPS) for IP AOR Command Unit and IP Supervisor

FLUSH MOUNT TRIM RINGS FOR COMMAND UNIT

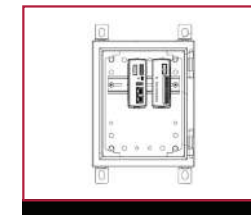


AOR-IP-TR80
Flush mount trim ring for 40- and 80-station IP AOR Command Units and Auxiliary Command Units



AOR-IP-TR160
Flush mount trim ring for 120- and 160-station IP AOR Command Units and Auxiliary Command Units

SUPERVISION



AOR-IP-SUP
IP supervisor automatically and continuously monitors for network pathway integrity between IP AOR Stations, Command Units, and Auxiliary Command Units

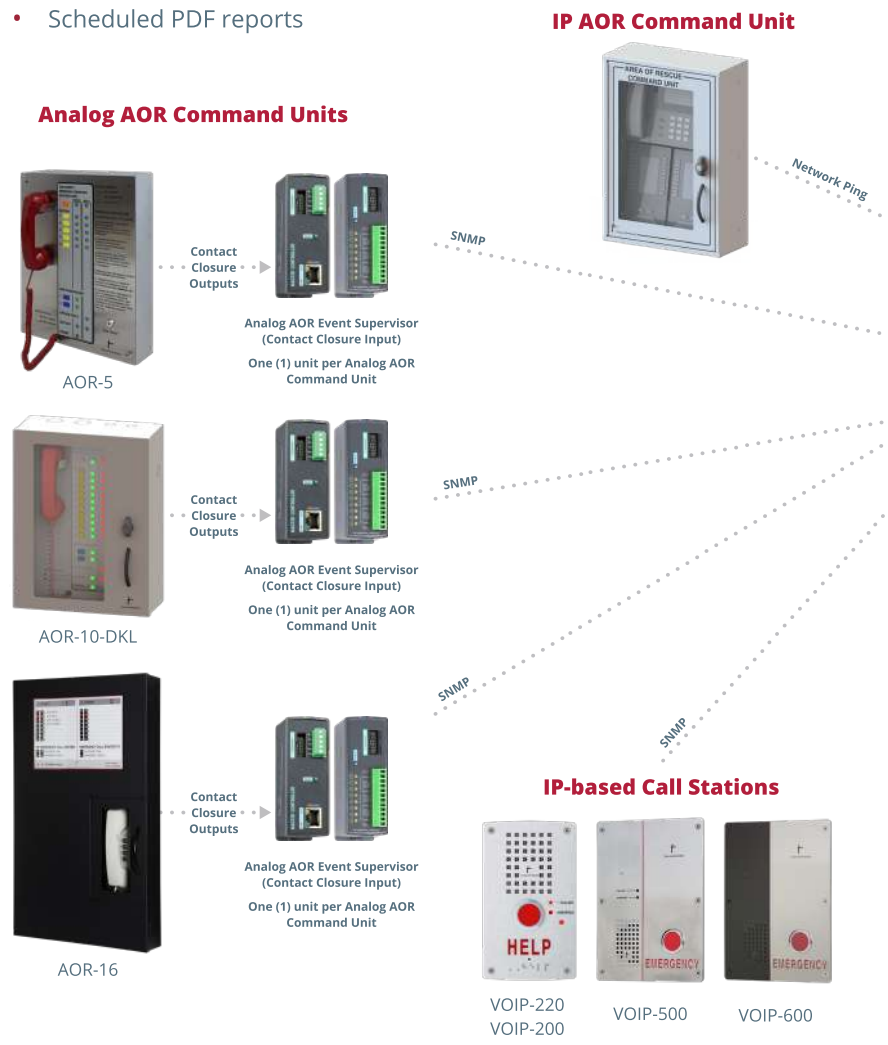


AOR-IP-UPS-SUP
Primary power source supervisor for IP AOR uninterruptible power supplies (UPSes)

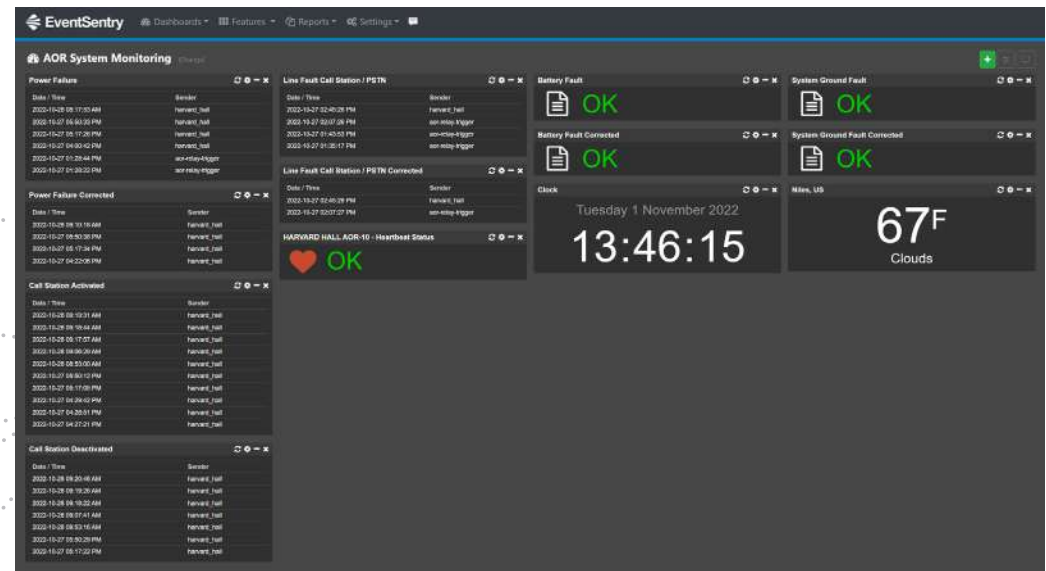
EMERGENCY COMMUNICATION SYSTEM MONITOR FOR AREA OF RESCUE AND BLUE LIGHT PHONE SYSTEMS

The Emergency Communication System Monitor (ECSM-1) is a server-based application that monitors events on Area of Rescue Assistance Systems or IP-based Blue Light Phones. The system provides timely alerts and information through:

- Real-time monitoring of events through a web-based dashboard
- Real-time alerting via email
- Scheduled PDF reports



ECSM-1 Server



Events Monitored for Each Type of System

Analog AOR

- Activation of any AOR station (does not identify individual station)
- Opens/shorts on AOR station cabling (does not identify individual station)
- 24VDC input power failure
- Low battery (low voltage detected) or battery has been disconnected
- System ground fault

IP AOR

- Online/offline status of IP AOR Stations
- Online/offline status of IP AOR Command Unit

Blue Light Phones

- Call placed/failed/terminated
- SIP registration
- Power up
- Network up/down (physical link)
- Stuck button
- Relay output activated/deactivated

NOTES

NOTES

EMAIL US

Sales

info@talkaphone.com

Purchase Orders

orders@talkaphone.com

Marketing

marketing@talkaphone.com

Technical Support

support@talkaphone.com

Customer Service

customerservice@talkaphone.com

For information on our limited warranty, terms of use, shipping, and returns, please visit: www.talkaphone.com/terms-of-use-and-limited-warranty



7530 North Natchez Avenue

Niles, Illinois 60714

T: 773-539-1100 F: 773-539-1241

info@talkaphone.com

Rev. 04/03/2023