

10100 Series

Flexible Product Options | Up to 672 Mbps



The 10100 product family offers an extensive range of models. The range includes Quickbridge®, Multipoint, and combination Subscriber/Wifi models. Capable of throughput up to 672 Mbps, AES encryption at 128 or 256 bit, and delivering flexible antenna options, the 10100 Series is an excellent tool kit for the network designer.

Key Features

- ▶ Advanced QoS for quad-play applications
- ▶ 2x2 MIMO radio delivering up to 672 Mbps
- ▶ Secure over-the-air 128 or 256-bit AES Encryption
- ▶ 5 GHz Unlicensed Band, 20, 40, and 80 MHz channels

Point to Point

LEARN MORE



MultiPoint

LEARN MORE



Edge 1000 Series

Small Channel Sizes | Up to 380 Mbps | 4.9 & 5 GHz



The Edge 1000 series offers an all-in-one compact solution configurable to be a point-to-point endpoint, a Multipoint CPE, or a Multipoint Base Station. The Edge 1025 also enables MIMO 4x4 operation when used with a Quad polarity external antenna or two Dual Polarity antennas with one antenna mounted at 45°.

Key Features

- ▶ Advanced QoS for quad-play applications
- ▶ Integrated 30° antenna with external connectors
- ▶ Throughput up to 294 Mbps (1055), 380 Mbps (1025)
- ▶ 5, 10, 20, 40, and 80 MHz channel options
- ▶ Low Cost 4.9 and 5 GHz Unlicensed band options

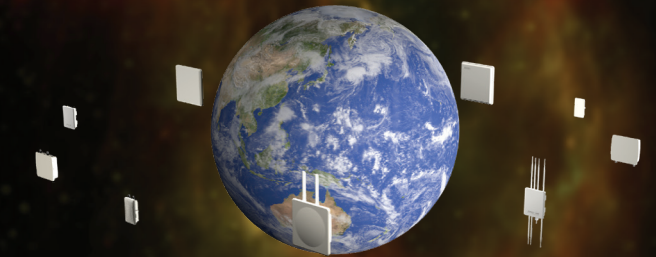
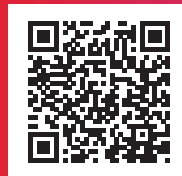
Point to Point

LEARN MORE



MultiPoint

LEARN MORE



Wireless Connectivity Solutions for The World

www.proxim.com

© 2024 Proxim Wireless - All Rights Reserved

Proxim Wireless is a Global Leader in Advanced Wireless Broadband and Wi-Fi Solutions

About Proxim

For more than 40 years Proxim has pioneered wireless technologies to meet the needs of industries, government agencies and communication companies around the globe.

Our radios operate in unlicensed radio spectrums, making them ideal for the rapid deployment of networks wherever and whenever they are needed.

Our products can be categorized into four groups, each group serving specific application needs for our customers.

- **Point to Point** - A single dedicated connection for backhaul of data between remote locations.
- **Point to Multipoint** - A many to one radio network that aggregates data from multiple remote clients to a single base station radio.
- **Outdoor WiFi** - Reliable high availability Wi-Fi access in demanding outdoor environments.
- **Network Tools** - Network and Device management, network planning and design, field configuration apps.

Rugged Reliability

Proxim products are designed to withstand extreme weather and high salt conditions. They have been proven in diverse environments ranging from freezing coastal conditions to the high desert.

The inbuilt reliability of our products is one of the many reasons customers keep coming back to Proxim.

STRATUM X5

High Capacity | Point to Point | Greater than 1.5 Gbps



The Stratum™ X5 is a 5 GHz, MIMO 4x4 radio that takes throughput to the next level. New generation technology combined with MIMO 4x4 enables more than 1.5 Gbps throughput over an 80 MHz Channel. The flexible design creates an all-in-one solution configurable as a point-to-point endpoint, Multipoint CPE, or Multipoint Base Station.*

Key Features

- ▶ Speeds over 1.5 Gbps
- ▶ Secure over-the-air 256-bit AES encryption
- ▶ MIMO 4x4:4 enables efficient use of spectrum
- ▶ 5 GHz Unlicensed Band, 20, 40, and 80 MHz channels

*Point to Multipoint firmware available 2024.

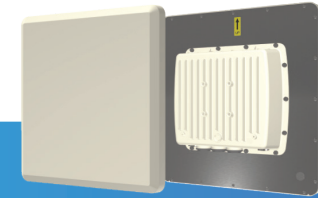
Point to Point / MultiPoint

LEARN MORE



BeamX Series

Beam Steering Antenna | Auto Align | Up to 672 Mbps



The 10250 BeamX product family uses a beam steering antenna and a secondary, look-ahead scan radio to avoid interference and maximize the use of available radio spectrum. The intelligent beam steering technology enables auto-alignment of links and minimizes interference in noisy environments.

Key Features

- ▶ Auto align antenna speeds deployment
- ▶ Beam Steering optimizes nLOS configurations
- ▶ Secure over-the-air 256-bit AES Encryption
- ▶ 5 GHz Unlicensed Band, 20, 40, and 80 MHz channels

Point to Point

LEARN MORE



MultiPoint

LEARN MORE

