

interact



Connected lightning made easy with Interact Pro

Interact Pro app and portal for small
and medium-sized businesses

Find out more about Interact
www.Interact-lighting.com

Works with

Connected lighting

PHILIPS

Contents

04 **Welcome to Interact Pro.**
See what it's all about.

09 **Hassle-free set up.**
Five simple steps are all it takes.

06 **Bright benefits for all.**
Uncover the value for you and your customers.

10 **Using the Interact Pro app, portal and dashboard.**
Save time and money by reducing unnecessary steps.

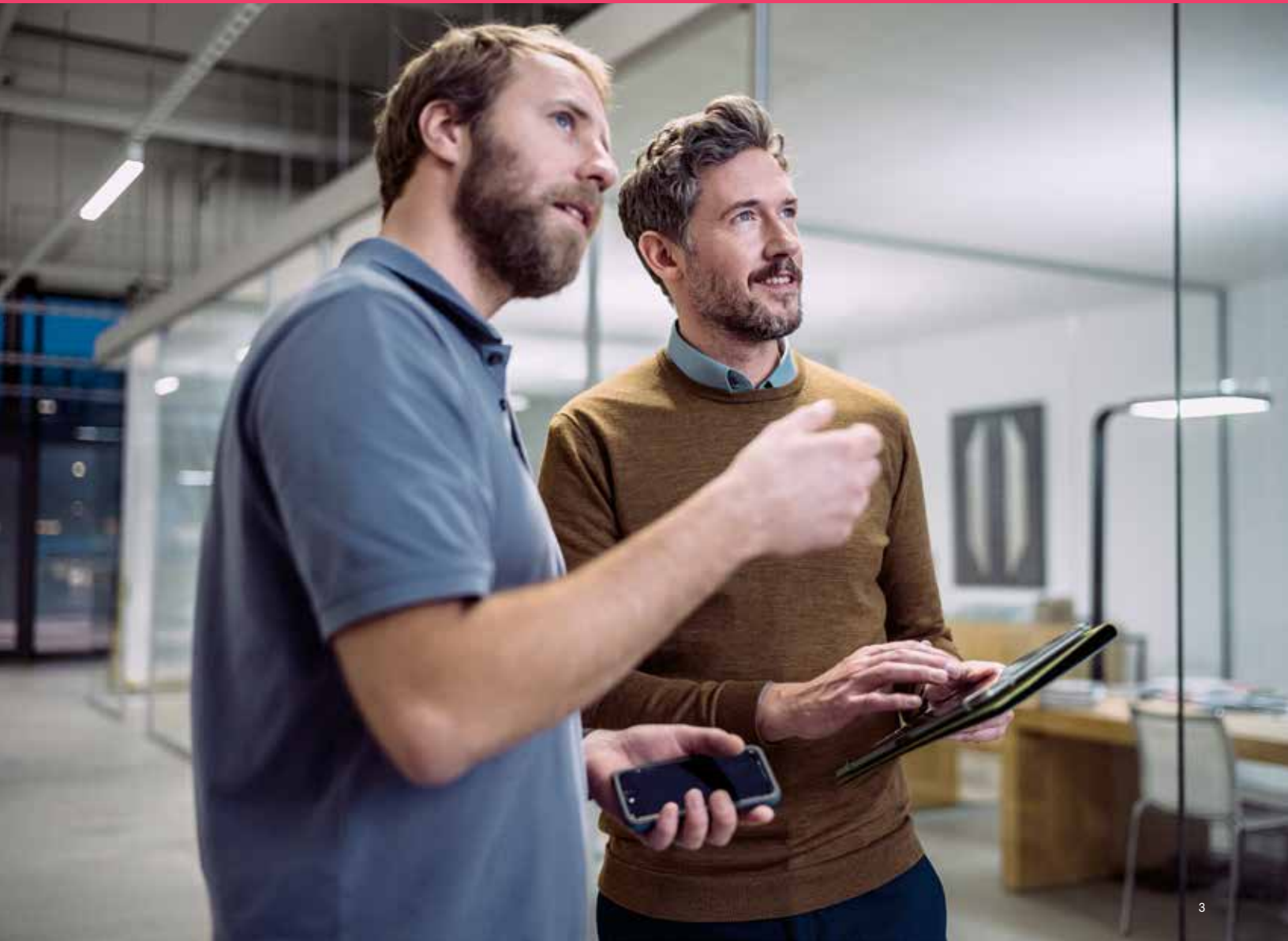
08 **Where to use Interact Pro.**
Install Interact Pro in a variety of settings.

14 **Hardware that's easy to install.**
Choose Philips Interact Ready connected lighting.

interact Pro

Expand business opportunities and improve efficiencies with the Interact Pro connected lighting system: intuitive, user-friendly Interact Pro app and portal plus robust Philips Interact Ready luminaires, retrofit kits and lamps. It enables wireless connectivity benefits by removing current barriers for adoption.

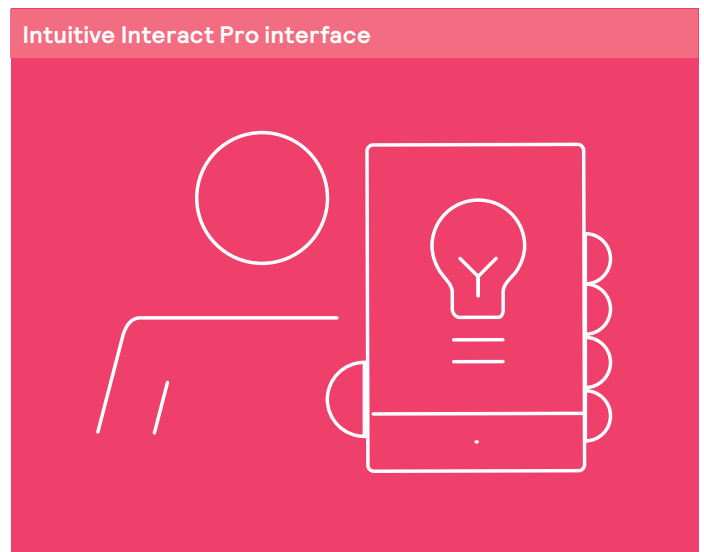
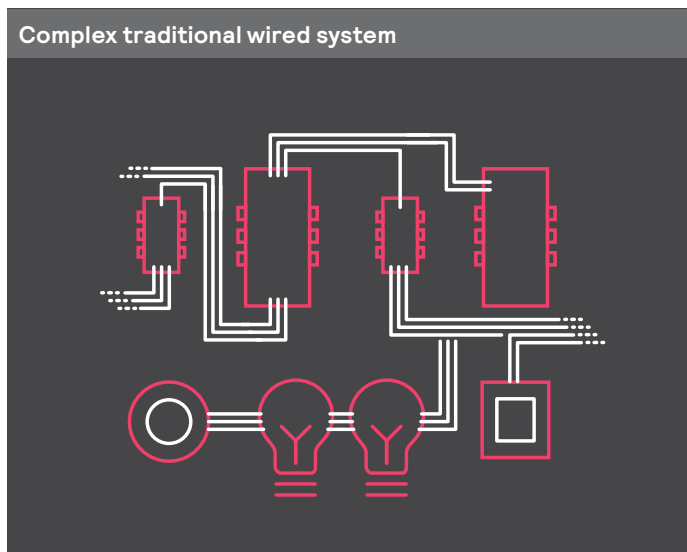
Lights. Insights. Action.





The simple way to connected lighting

This game-changing connected lighting system consists of Philips Interact Ready light sources wirelessly integrated with the Interact Pro app and portal. Installation doesn't require extra cabling or IT support, so you can complete jobs quickly and without hassles.



How the connected lighting system comes together

Interact Pro software

Interact Pro gateway

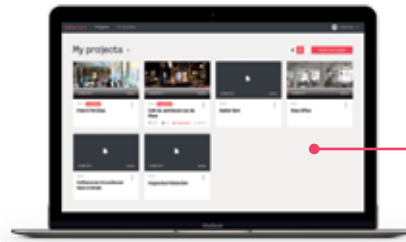


Each gateway controls 200 light points, 15 sensors and 15 switches. Multiple gateways can be used at a customer site for multiple floors, areas, and adjoining structures.

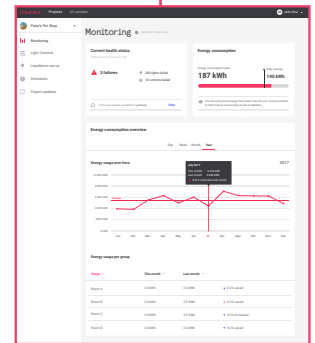
Interact Pro app



Interact Pro portal



The left navigation side bar provides quick and easy access to the monitoring (energy consumption analysis), light controls, schedule and project update dashboards.



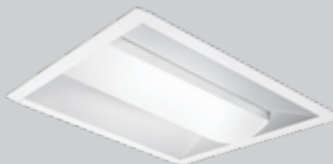
Philips Interact Ready lighting

PHILIPS interact ready.

Wireless connected lighting with smart luminaires, smart retrofit kits, and smart lamps.



Smart luminaires*



Smart retrofit kits



Smart lamps



Smart sensors



Smart wall-switches

* Smart luminaires include selected product lines from Philips Lightolier, Philips Day-Brite and Philips Ledalite



Success starts with the Interact Pro connected lighting system

The challenge with today's connected lighting adoption for small to medium sized businesses is the up-front costs of hardware, ongoing cost to serve and complex install steps with additional technical resources required. Our solution provides far more than illumination, and as lighting enters the digital world, the potential is limitless. This is where Interact Pro provides value to both you and your customers.

- True Wireless system featuring a kinetic wall switch and Zigbee 3.0 wireless light point communication
- Fast, easy installation and invaluable service opportunities
- Personalized light with optimized energy savings
- Access to insightful data over the lifetime of the install
- Qualifies for DLC's Networked lighting controls energy rebates

How does Interact Pro help you?

Interact Pro delivers the power of IoT with the ease of a wireless system of lights, sensors, and switches. The intuitive Interact Pro app guides speedy set-up and opens up a new world of multifaceted possibilities for relighting and new construction projects.

Easy to install and set-up

The fast gateway, mobile app and cloud-based portal setup does not require extra cabling or system programming by a technician. Interact Pro opens the door to opportunities out of reach due to cost and complexity with its less than a minute commissioning time per light point.

Reliable and robust

Interact Pro is designed with a holistic approach to system security that includes secure architecture, development, deployment and lifecycle process. Distributed control and encrypted communication across devices and the cloud using latest security protocols (TLS) makes the system even more robust.

Long-term, low-risk solution

The user-friendly app and dashboard monitors the health of your lighting components and provides performance and maintenance data to optimize energy savings with potential energy savings of up to 79%* resulting in lower capital and running cost for business owners.

Effortless compliance

Meets stringent code and ASHRAE compliance, qualifies for DLC networked lighting controls rebate programs and Title 24 demand response and plug load control requirements to earn the highest level of Utility rebate potential.

*Based on the case study "Pelling Marketing by Design"





Wherever you work, it works

Interact Pro is the ideal enabling and personalized technology to simultaneously support the success of your customers and your business. This energy-saving connected lighting system is especially suitable for small- to medium-sized businesses, such as offices, schools, warehouses and retail locations. Each gateway controls 200 light points, 15 sensors and 15 switches. Multiple gateways can be used at a customer site for multiple floors, areas, and adjoining structures. Guide your customers into the empowering connected lighting world while growing your business.



Office and School



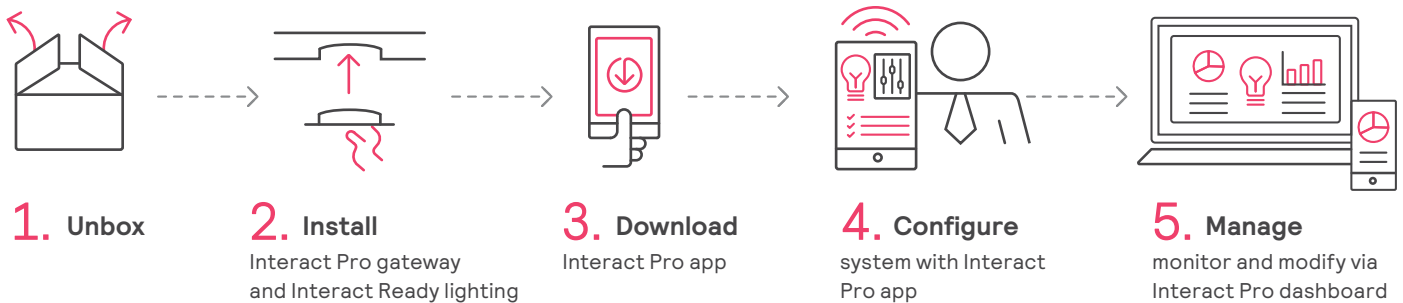
Industry



Retail

Get connected in 5 simple steps

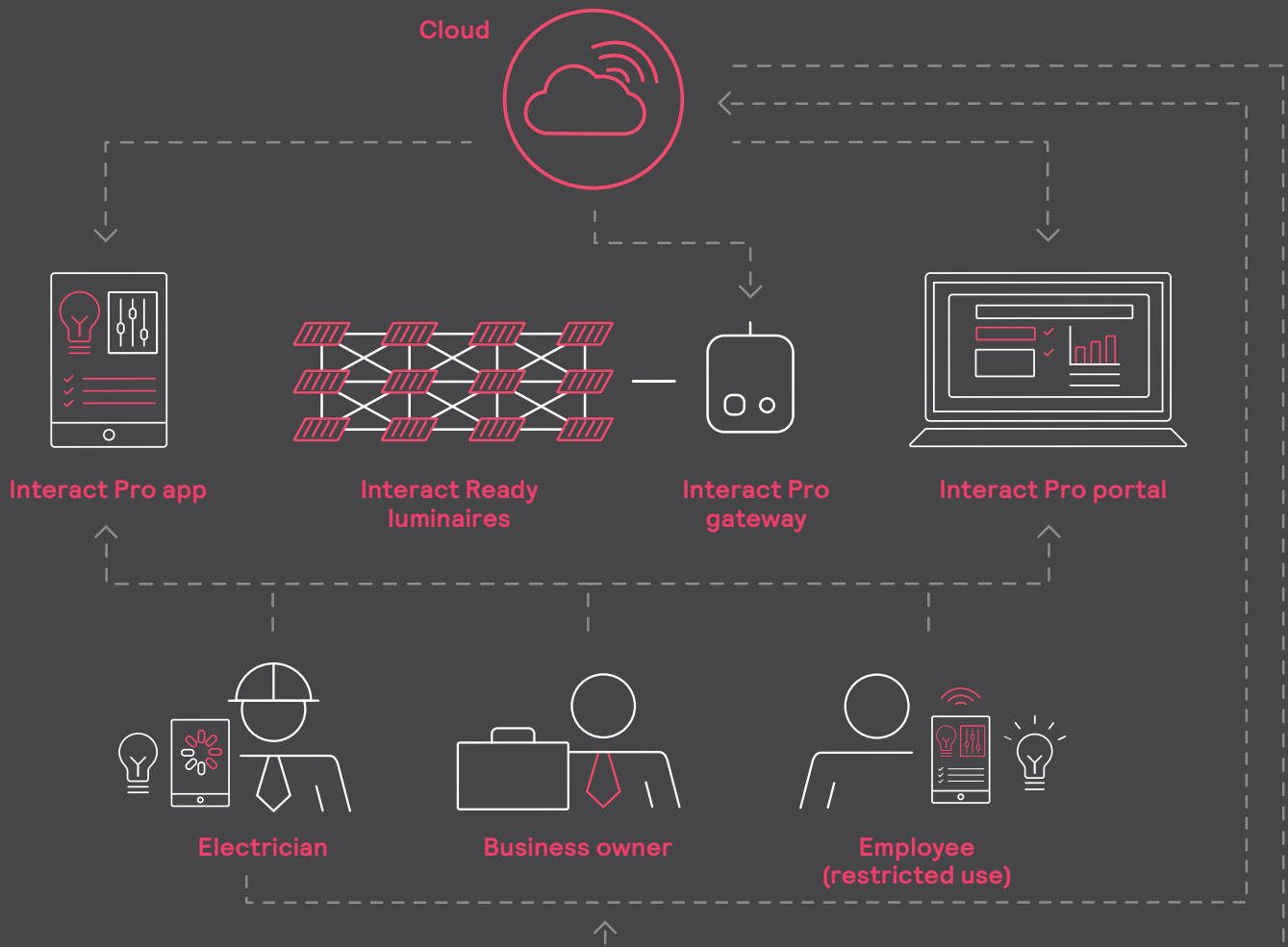
With our easy 5-step process, the cloud-based Interact Pro connected lighting system is ready to provide energy savings, insightful data and much more.



Users control the lights, scenes and schedules through a downloadable Interact Pro app on enabled portable devices. Add a wall-mounted smart switches for added convenience in the entire space.

The Interact Pro gateway connects the lighting network with the cloud and stores the user commands and settings to our patented transceiver in each lighting unit in the ZigBee 3.0 mesh network.

Interact Pro at a glance



Discover the power of Interact Pro's connected lighting system

Interact Pro opens up a new world of multi-faceted possibilities for relighting and new construction projects. Imagine providing customer value through productivity-strengthening personalized light settings along with enhanced energy-saving measures and access to real-time data for streamlined business efficiencies.



Wireless gateway

Key features

- Link to Wifi router via Ethernet cable
- Connect up to 200 light points, 15 switches, 15 sensors
- Compact 3.5"x3.5" size allows for discreet installation



Interact Pro app

Key features

- Easy wireless connection of luminaires, retrofit kits, lamps, switches and sensors
- Linked light source and accessories information
- Quick remote creation of groups, zones, scenes, settings and schedules with on/off/dim and other customization
- Lighting scene management
- Lighting scheduling
- Energy consumption information

Electrical contractors, ESCOs and facilities teams

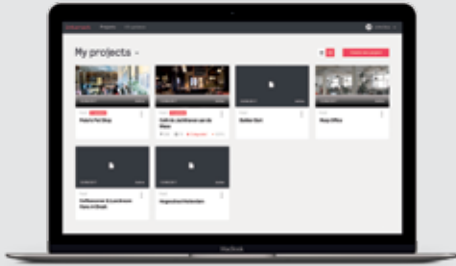
Reduce cost to serve your customers and gain more business.

- Improves ease of estimating labor on controls projects
- Easy set up of light sources, switches, and sensors without need for an expensive specialist

Owners

Reduce capital spend and operational cost. Future proof the installation and improve employee productivity.

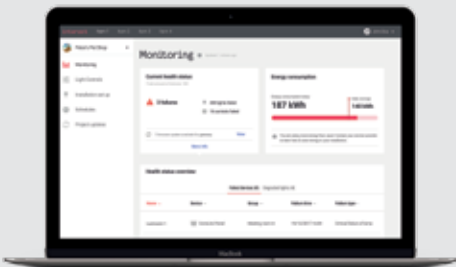
- Lighting scene management via smartphone
- Lighting scheduling
- Manage groups, zones, on/off/dim and customization
- Energy consumption feedback
- Flexible rights for specific spaces to employees



Interact Pro portal

Key features

- Overview of user-specific customer installations
- Future-ready platform updates
- Remote system management including lighting schedules and light control
- Training tools and resources



Interact Pro dashboard

Key features

- Real-time lighting usage and energy consumption data
- Real-time system status and alerts

Electrical contractors, ESCOs and facilities teams

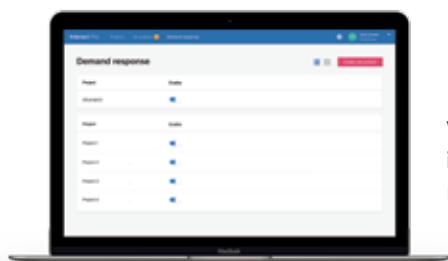
Reduce cost to serve your customers and gain more business.

- Save time and money by reducing unnecessary trips
- Guarantee and provide a professional service level to customers
- Improve relationships by identifying and responding to issues like performance problems or forecasted device failures ahead of time

Owners

Reduce capital spend and operational cost. Future proof the installation and improve employee productivity.

- Desktop view of information provided in the Interact Pro app
- Adapt lighting, adjust scene levels and set schedules
- Manage user rights
- Monitor energy usage and savings



Demand Response Management

Via API (application protocol interface) integration across multiple projects



Service Tag

Rich product information for each installed device, enabled by Service Tag

Cost to serve has never been better

Interact Pro enables service providers (electrical contractors, ESCOs and facilities teams) to manage and monitor the installation remotely without the need to visit the site saving multiple trips to the site, thereby improving the efficiency of their operations and increasing their productivity.

Interact Pro portal (no subscription needed):

- Overview of user-specific customer installations
- Educational information including user guides, white papers, how-to's and more
- Updates and announcements

Interact Pro dashboard (subscription-based):

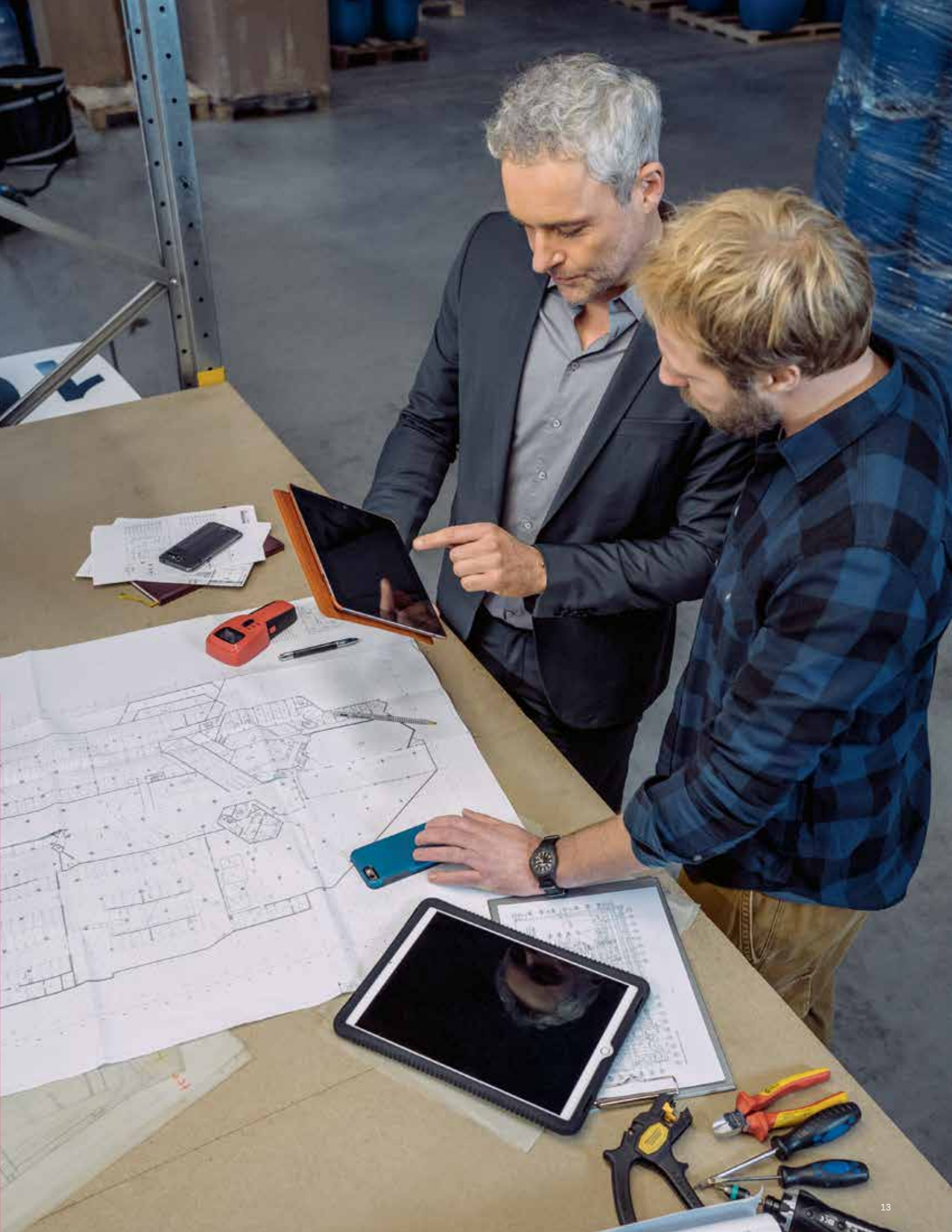
- Receive real-time system status and alerts to quickly identify and respond to issues
- Identify and act on preventative and unexpected maintenance needs
- Remotely access rich product information for each installed device, enabled via Service Tag app
- Identify and order parts as needed
- Prepare and manage projects, while adding new settings by remote
- Monitor real-time lighting usage and energy consumption data
- Utilize a future-ready platform and upgrades for superior service performance

Users access project dashboards by subscribing through the portal. After the 3 month free trial monthly fees apply. Non-subscription and subscription feature access is subject to change. Always consult Sales representation for current offering.



Network lighting controls driving demand

Interact Pro's system meets stringent code compliance, Title-24, qualifies for networked lighting controls rebates and other energy-efficient lighting programs. To find rebates in your area visit [Philips.com/interact-ready](https://philips.com/interact-ready) for the latest updated list.



Philips Interact Ready connected lighting

Interact Pro adds a new level of connected lighting success to your business with the broadest portfolio of luminaires, retrofit kits and lamps. Introduce customers to the power of IoT possibilities and simplify your work at the same time. Take on more projects, complete them faster and create partnerships that last.

That's Interact Pro.

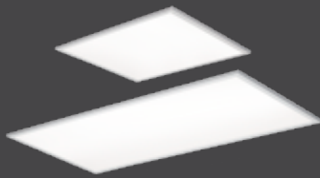


PHILIPS

interact ready.

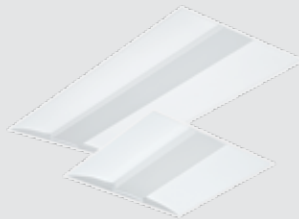
Philips Day-Brite FluxPanel LED recessed

2'X2', 2'X4', 1'X4' recessed, suspended and surface mount flat panel smooth gradient of light.



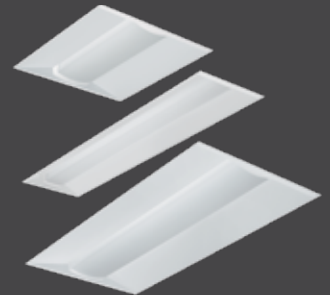
Philips Day-Brite FluxGrid LED recessed

2'X2', 2'X4', 1'X4' recessed troffer offers architectural appeal with two different lens styles, discrete air handling and access to the boards and driver from below.



Philips Day-Brite EvoGrid LED recessed

2'X2', 2'X4', 1'X4' architectural grade recessed troffer with large luminous area that minimizes apparent brightness compared to other based luminaires.



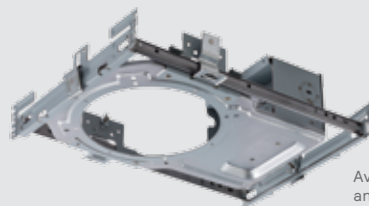
Philips Lightolier Calculite LED downlights

LED downlight features industry leading visual comfort (50° cut-off), excellent uniform illumination over time, and patented installation flexibility.



Philips Lightolier LyteProfile LED downlights*

LED downlight that provide best balance of performance and price while still featuring Lightolier's easy installation and future proof architecture.



Philips Lightolier EasyLyte* LED downlights

LED downlight that is the best choice for economy without sacrificing ease of installation or performance

Available in 4", 6" and 7" sizes

Additional Philips Interact Ready indoor products are available through the specials process. Contact a Signify representative for offering and availability.



Philips EvoKit LED retrofit kits

2'X2' and the 2'X4' LED Retrofit Kits compatible with both standard and narrow T-grid are an energy efficient, easy to install solution to upgrade fluorescent troffers to LED.



Philips Ledalite FloatPlane LED suspended and wall

Interact ready 4 feet and 8 feet suspended architectural luminaire with sleek and sporty profile options, sky-high performance and ground level pricing make it easier than ever to integrate coast-to-coast style into your lighting design.



Philips Day-Brite FluxStream LED linear

A family of LED linear luminaires deliver high-quality, more uniform light versus fluorescents for a greater range of applications.



Philips MasterConnect TLED

2', 4' and U bent InstantFit T8 LED tubes are easy upgrade into Interact connected lighting systems. Remove the old fluorescent tubes, twist in these smart TLEDs and you're connected.



Philips MasterConnect TLED with Integrated Motion Sensing*

4' InstantFit T8 LED tubes offer the same features found in MasterConnect smart TLEDs, with the addition of integrated motion sensing. These tubes create a distributed sensing network - motion sensing in every fixture.



Philips sensors

Wireless Occ sensor (OCC SENSOR IA CM IP42 WH 10/1) or wireless Day/Occ sensor (OCC MULTI SENSOR IA CM WH 10/1).



Philips switch

Philips UID8451/10 ZigBee Green Power wireless switch and dim 2-button selector



*Available at a future date

Find out how Interact can transform your business
www.Interact-lighting.com/pro

interact

© 2018 Signify Holding. All rights reserved. Signify reserves the right to make changes in specifications and/or to discontinue any product at any time without notice or obligation and will not be liable for any consequences resulting from the use of this publication.

INt-1803BN 10/18