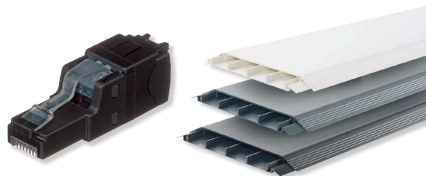




Innovative AV Solutions from Panduit and Atlona



PANDUIT[®]

ATLONA[®]
a **PANDUIT** company



Connect and Collaborate with End-to-End Innovation from the New Leader in AV Solutions

Modern AV systems enable connection and collaboration, driving discussions, improving education, and facilitating conversations within the workplace, school, or medical facility.

Today, Panduit has made it easy to deploy an AV system over structured cabling, with a market-leading end-to-end solution from a single supplier. Active devices from Atlona, a Panduit company, are the core of the AV system, and are supported by Panduit's robust, reliable infrastructure portfolio to deliver flexible, scalable AV applications.

Whether you're looking at point-to-point AV extension for a classroom, boardroom, or huddle space, or an enterprise-wide AV over IP solution, you will find high quality solutions that are simple to install and even easier to operate, all backed by an industry-leading warranty and global customer support.

Common Applications Supported by AV

- Boardroom
- Classroom
- Conference Room
- Digital Signage
- Entertainment Space
- Huddle Space
- Lecture Hall
- Training Room
- Video Conferencing



PANDUIT®

 **ATLONA**
a **PANDUIT** company



End-to-End AV Solutions from Panduit and Atlona

Enabling Connection and Collaboration with Innovative AV Solutions



Serving Diverse Markets



BUSINESS



EDUCATION



ENTERTAINMENT



GOVERNMENT



HEALTH CARE



HOSPITALITY

Atlona AV and Panduit infrastructure offer best-in-class AV signal distribution with cutting-edge technology and award winning training and support



Select the Perfect Point-to-Point System to Meet Your Needs

Panduit and Atlona support a wide variety of point-to-point applications, ideal for collaboration in spaces like small conference rooms and huddle spaces in schools and office spaces. HDBaseT is the most common and most reliable method of AV extension, and Atlona HDBaseT extenders come with a variety of features that allow users to pick and choose what is best for their sites. Simple operation makes HDBaseT a user-friendly option, while features like 4K compatibility and USB-C interfaces make it easy to share any type of content from many types of devices.



AT-UHD-EX-100CEA-KIT

Part Number	PoE	4K/UHD 60Hz 4:2:0 8bit w/HDCP 2.2	Bi-Directional IR	Bi-Directional RS-232	Ethernet	Return Optical Audio	1080p Range Cat 6A	4K/UHD Range Cat 6A
AT-UHD-EX-70-2PS	No	Yes	No	No	No	No	230 ft. (70m)	130 ft. (40m)
AT-UHD-EX-70-KIT	Yes	Yes	No	No	No	No	230 ft. (70m)	130 ft. (40m)
AT-UHD-EX-70C-KIT	Yes	Yes	Yes	Yes	No	No	230 ft. (70m)	130 ft. (40m)
AT-UHD-EX-100CE-KIT	Yes	Yes	Yes	Yes	Yes	No	328 ft. (100m)	328 ft. (100m)
AT-UHD-EX-100CEA-KIT	Yes	Yes	Yes	Yes	Yes	Yes	328 ft. (100m)	328 ft. (100m)

Point-to-point connections require cabling runs that can reach up to 100 meters. Properly route and protect data, AV, and power cables by using Panduit ADA-compliant above floor raceway. Inexpensive and easy to install, it's a must for any room where core drilling isn't an option.



AFR4BCBL



Maximize your Software-Based Conferencing Rooms

The Atlona HDVS Series is a superb all-in-one solution for boardrooms, conference rooms, training rooms, and huddle spaces. From complete kits that deliver a fully-integrated AV solution for a room, to wallplate transmitters, the HDVS series sets up with ease, with simple operation and a wealth of desirable features:

- Auto-switching for collaboration among multiple users
- Extended distance HDBaseT for larger rooms
- PoE operation makes installation easy
- Integrated automatic display control



AT-UHD-HDVS-300-C-KIT



AT-HDVS-210U-TX-WP



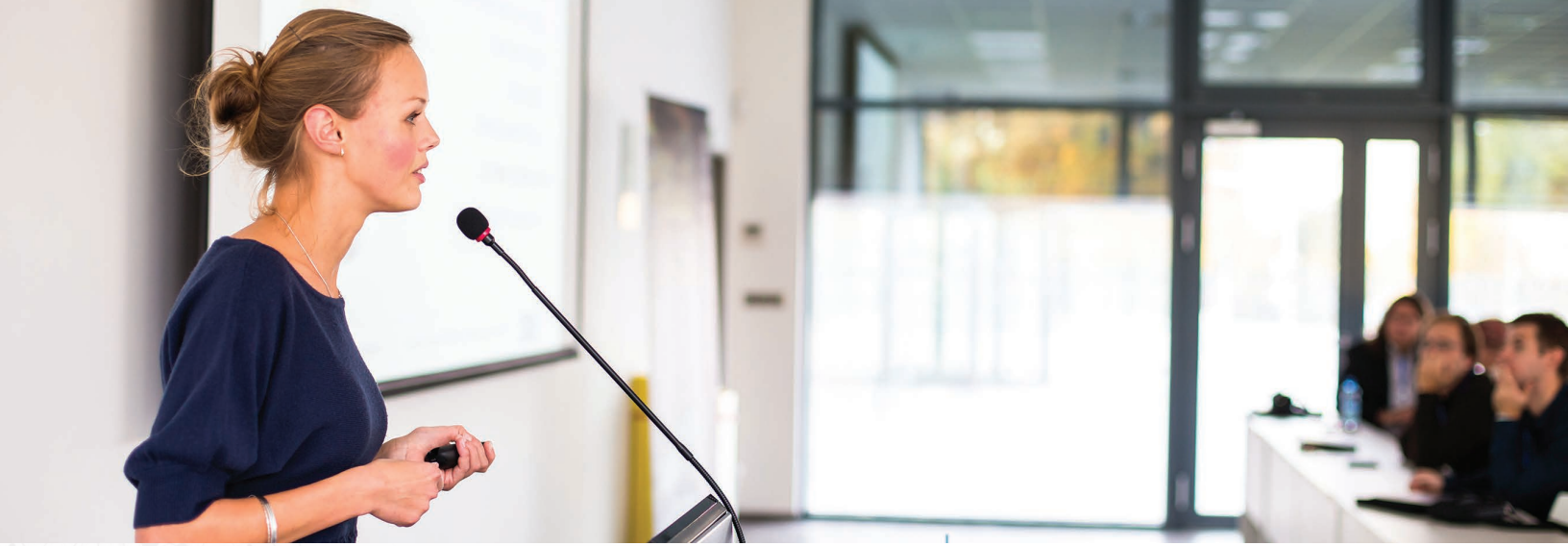
AT-HDVS-SC-RX

Part Number	Description
AT-UHD-HDVS-300-C-KIT	Soft codec conferencing system with PTZ camera.
AT-HDVS-150-KIT	HDBaseT transmitter and receiver kit.
AT-HDVS-210H-TX-WP	HDBaseT wallplate transmitter; dual HDMI.
AT-HDVS-210U-TX-WP	HDBaseT wallplate transmitter; HDMI/USB-C.
AT-HDVS-200-TX	HDBaseT transmitter; VGA and dual HDMI.
AT-HDVS-200-RX	HDBaseT receiver and scaler.
AT-HDVS-SC-RX	High video quality scaler, switcher, and HDBaseT receiver.

Video conferencing is more than just a trend, it's the new norm for remote discussion. Easily connect peripheral IP devices with the Panduit field term plug. Designed specifically to connect devices like AV equipment and IP cameras, its small footprint fits where other plugs won't. The plug terminates in a snap, and a single part number works with Category 5e, 6, and 6A cabling.



FP6X88MTG



Simplify Complex Presentation Spaces

The CLSO Series are versatile presentation and multi-format switchers, ideal for training rooms and lecture halls. Extend content to multiple displays and from a variety of inputs. Everything needed for large, complex spaces is included in a single feature-rich product.



AT-UHD-CLSO-824

Part Number	Device Type	Inputs	Outputs	Audio Integration	4K/UHD Capability	Control Integration	Additional Features
AT-UHD-CLSO-601	6x1 AV presentation switcher	2 Multi-function VGA 4 HDMI	Mirrored HDBaseT (100m) and HDMI Integrated 4K scaling	Mic input with ducking Embedding and de-embedding Breakaway audio switching	4K/30 4:4:4	TCP/IP, RS-232, and IR control RS-232 routing to local and remote devices	Automatic display control Automatic input switching
AT-UHD-CLSO-612ED	6x1 AV presentation switcher	2 HDBaseT (100m) 2 HDMI 2 Multi-function VGA	Mirrored HDBaseT (100m) and HDMI Integrated 4K scaling	Mic input with ducking Embedding and de-embedding Breakaway audio switching	4K/30 4:4:4	TCP/IP, RS-232, and IR control RS-232 routing to local and remote devices	Automatic display control Automatic input switching
AT-UHD-CLSO-824	8x2 AV presentation matrix switcher	3 HDBaseT (100m) 4 HDMI 1 Multi-function VGA	2 Mirrored HDBaseT (100m) and HDMI	Mic input with ducking Embedding and de-embedding Audio output matrix mixer	4K/60 4:2:0	TCP/IP, RS-232, and IR control RS-232 routing to local and remote devices	—

Larger presentation spaces require more complex networking and AV equipment. House and protect presentation gear with Panduit's Wall Mount Cabinets. Cabinets range in size from 12 to 26 RU, with glass or perforated doors to meet your needs.

PZWMC12W





The Definitive BYOD Solution for Wireless AV

When collaboration is key, the SW-510W BYOD solution helps participants connect and share from any device, without need for dongles or connectors. Connect wirelessly, with secure signal transmission, auto-switching, display control, and the industry's first USB-C equipped switcher. Also available: the SW Series of compact multi-format AV switchers.



AT-UHD-SW-510W

Part Number	Device Type	Inputs	Outputs	4K/UHD Capability	Control Integration	Additional Features
AT-UHD-SW-510W	Universal matrix switcher with wireless link	2 HDMI 1 DisplayPort 1 USB-C (Alt. Mode) wireless	1 HDMI 1 HDBaseT	4K/UHD capability @ 60 Hz with 4:2:0 chroma subsampling	RS-232, Trigger, Relay, LAN	Native wireless AV casting Matrix switching
AT-UHD-SW-51	4K/UHD Five-input HDMI switcher	5 HDMI	1 HDMI	4K/UHD capability @ 60 Hz with 4:2:0 chroma subsampling	RS-232, IR, LAN	Automatic input selection
AT-UHD-SW-52	4K/UHD Five-input HDMI switcher with mirrored HDMI outputs	5 HDMI	2 HDMI	4K/UHD capability @ 60 Hz with 4:2:0 chroma subsampling	RS-232, IR, LAN	Front panel volume control and indicator
AT-UHD-SW-52ED	4K/UHD Five-input HDMI switcher with mirrored HDMI / HDBaseT outputs	5 HDMI	1 HDMI 1 HDBaseT	4K/UHD capability @ 60 Hz with 4:2:0 chroma subsampling	RS-232, IR, LAN	HDBaseT output provides extension to 100m with Power over Ethernet capability
AT-UHD-SW-5000ED	4K/UHD Five-input HDMI switcher with two HDBaseT inputs and mirrored HDMI / HDBaseT outputs	3 HDMI 2 HDBaseT	1 HDMI 1 HDBaseT	4K/UHD capability @ 60 Hz with 4:2:0 chroma subsampling	RS-232, IR, LAN	HDBaseT output provides extension to 100m with Power over Ethernet capability

Sometimes, smaller is better. Panduit 28 AWG patch cords offer the same performance as standard patch cords, in a size that is easier to manage and optimizes available space.





Redefining AV for Presentation and Collaboration

The Atlona Omega™ series is right at home in small conference and meeting rooms in the modern workplace. This new and evolving family of switching, extension, and video processing solutions facilitates communication through AV content.



AT-OME-PS62

Part Number	Device Type	Inputs	Outputs	USB	4K/UHD Capability	Control Integration	Additional Features
AT-OME-EX-TX	Transmitter	1 HDMI	1 HDBaseT (100m)	Host: 1 USB 2.0 Type B Device: 2 USB 2.0 Type A	4K/60 4:2:0 over HDBaseT	RS-232 and IR extension over HDBaseT	PoE remote-powered
AT-OME-TX-WP	Transmitter US single-gang wallplate	1 HDMI	1 HDBaseT (100m)	Host: 1 USB 2.0 Type B Device: 2 USB 2.0 Type A	4K/60 4:2:0 over HDBaseT	RS-232 extension over HDBaseT	PoE remote-powered
AT-OME-ST31	3x1 AV switcher + transmitter with scaling	2 HDMI 1 USB-C	Mirrored HDBaseT (100m) and HDMI	—	4K/60 4:2:0 over HDBaseT 4K HDR and 4K/60 4:4:4 (Local I/O)	TCP/IP and RS-232 control	PoE remote-powered PoE and USB-C power source
AT-OME-EX-RX	Receiver	1 HDBaseT (100m)	1 HDMI	Device: 2 USB 2.0 Type A	4K/60 4:2:0 over HDBaseT	RS-232 and IR extension over HDBaseT	PoE power source or remote-powered
AT-OME-SR21	2x1 Switcher + receiver with scaling	1 HDBaseT (100m) 1 HDMI	1 HDMI	Host: 1 USB 2.0 Type B Device: 2 USB 2.0 Type A	4K/60 4:2:0 over HDBaseT 4K/60 4:4:4 (HDMI I/O)	TCP/IP, RS-232, and contact closure control	PoE power source
AT-OME-PS62	6x2 AV presentation matrix switcher with scaling	3 HDMI 2 HDBaseT (100m) 1 USB-C	Matrixed HDBaseT (100m) and HDMI	Host: 2 USB 2.0 Type B, 1 USB 3.1 Type C Device: 2 USB 2.0 Type A	4K/60 4:2:0 over HDBaseT 4K/60 4:4:4 (Local I/O)	TCP/IP and RS-232 control	PoE and USB-C power source
AT-OME-SW32	3x2 AV matrix switcher with scaling	2 HDMI 1 USB-C	2 HDMI	—	4K/HDR and 4K/60 4:4:4	TCP/IP and RS-232 control	3 configurable mirrored and matrix switching modes

A properly labeled cabling installation simplifies moves, adds and changes down the road. Panduit hand-held printers and Turn-Tell labels make labeling a breeze.



LS8EQ



Uncompromised AV over IP Performance and Reliability

The distribution of AV over the IP network creates a system that is flexible, scalable, and cost-effective. OmniStream™ by Atlona delivers the performance and dependability of traditional AV distribution, plus the unrestricted scalability and cost efficiency of integrating over data networks. Pair OmniStream with Panduit's industry-leading cabling and connectivity for a networked AV solution that is simple to install, integrate, and manage. As a bonus, OmniStream is the only AV over IP platform that streams and decodes Dolby Vision HDR @ 60 Hz and 12-bit resolution.



AT-OMNI-111



AT-OMNI-112



AT-OMNI-311

Part Number	Description
AT-OMNI-111	Single-channel networked AV encoder.
AT-OMNI-112	Dual-channel networked AV encoder.
AT-OMNI-121	Single-channel networked AV decoder.
AT-OMNI-232	Analog to IP audio bridge.
AT-OMNI-238	IP to Analog audio bridge.
AT-OMNI-311	USB to IP adapter.
AT-OMNI-324	IP to USB adapter.

Secure your AV over IP connection with a cable that delivers award-winning 10G performance. Vari-MaTriX cable delivers outstanding thermal properties for PoE, and the industry's best EMI suppression in an unshielded cable. And, the 0.25" cable diameter makes it easy to work with and easy to fit in any installation.



PUP6AV04BU



User Friendly AV Control

Atлона Velocity™ brings a whole new approach to AV control, making it faster, easier, and more cost-effective than ever to specify and integrate a commercial AV control system.

Create agile AV control systems from an array of Atлона components:

- **Velocity Control Gateway** – A software and IP-based control processor designed for several AV systems over a network. Available as a server appliance, or software hosted on standard IT server infrastructure.
- **Velocity Touch Panels** – Sleek, stylistic touch panels in 5.5" and 8" sizes. BYOD integration options are also available for controlling AV systems from tablets, smartphones, PCs, and more.
- **Velocity Cloud** – A centralized online resource for AV integrators, facility AV/IT system administrators, and tech managers to remotely configure, monitor, and service Atлона Velocity Control Systems, from anywhere and anytime.

Velocity delivers everything you need in an AV control system, without the complications and expense of traditional systems.



AT-VGW-250



AT-VCC-RELAY-KIT



AT-VTP-800-WH

Part Number	Description
AT-VGW-250	AV control processor for velocity control system.
AT-VSG-250	AV software control processor for up to 250 IP devices. Also available for up to 2,500 IP devices (AT-VSG-2500) and 5,000 IP devices (AT-VSG-5000).
AT-VCC-IR-KIT	IP to IR command converter for velocity control system.
AT-VCC-RELAY-KIT	IP to Relay / sensor signal converter for velocity control system.
AT-VCC-RS232-KIT	IP to RS-232 command converter for velocity control system.
AT-VTP-550-BL	5.5" Touch panel for velocity control system, Black. Also available in White (AT-VTP-550-WH).
AT-VTP-800-BL	8" Touch panel for velocity control system, Black. Also available in White (AT-VTP-800-WH).
AT-VTP-TMK	Tabletop mounting kit for VTP-800 control system touch panels.
AT-VDL-10	Velocity BYOD AV control user interfaces for 10 devices. Also available for 50 devices (AT-VDL-50) and 250 devices (AT-VDL-250).



AV Infrastructure Matters

Robust, reliable infrastructure from Panduit ensures your AV systems deliver what you're expecting. Industry leading cabling and connectivity ensures AV signals get from point A to point B, while tried and true solutions like surface raceway, racks and cable management help you route and protect that cabling system. What goes on behind the scenes matters and you'll be glad you trusted that infrastructure to Panduit.

Copper Cables

- Superior headroom performance provides margins above the industry standard
- Vari-MaTriX cables offer best in class alien crosstalk mitigation as well as the best EMI immunity in a UTP cable

Description	Category 5e	Category 6	Category 6A
Unshielded plenum cables	PUP5C04BU-UY	PUP6004BU-W	PUP6AV04BU-G
Unshielded riser cables	PUR5C04BU-UY	PUR6004BU-W	PUR6AM04BU-CG
Shielded plenum cables	—	PFP6C04BU-UG	PFP6X04BU-UG
Shielded riser cables	—	PFR6C04BU-UG	PFR6X04BU-CG

Also available in WH (White) as standard, contact Panduit customer service for more color options.

Mini-Com® Jack Modules

- 100% tested to ensure performance and individually serialized for traceability
- Utilize patented Giga-TX™ Technology for terminations to maintain cable pair geometry and minimize conductor untwist

Description	Category 5e	Category 6	Category 6A
Unshielded jack modules	CJ5E88TG*	CJ688TG*	CJ6X88TG*
Unshielded shuttered jack modules	CJH5E88TG*	CJH688TG*	CJH6X88TG*
Unshielded angled jack modules	—	CJ#688TG*	CJ#688TG*
Shielded jack modules	CJS5E88TG**Y	CJS688TG**Y	CJS6X88TG**Y
Shielded shuttered jack modules	CJSH5E88TG**Y	CJSH688TG**Y	CJSH6X88TG**Y
Shielded angled jack modules	CJS#5E88TG**Y	CJS#688TG**Y	CJS#6X88TG**Y

Bulk Packs: Standard jack modules available in bulk packs, which package jacks in a single box with no bag. Add -24 after part number for packs of 24.
* = Unshielded color



IW = Off White, EI = Electric Ivory, IG = International Gray, BL = Black, BU = Blue, GR = Green, RD = Red, OR = Orange, VL = Violet, YL = Yellow, WH = White. Note: Colors shown may differ slightly from actual jack colors.

= LR for left/right angle; UD for up/down angle.

** = Shielded color



No designation = Black, BU = Blue, GR = Green, RD = Red, VL = Violet, YL = Yellow.

Note: Colors shown may differ slightly from actual jack colors.



PUP6AV04BU-G



CJ6X88TGBL



CJ6X88TGIW



CJS6X88TGY

Mini-Com® Modules



CMUSBAAWH

Part Number	Description
CMBBL-X	Blank module.
CMHDMIBL	2-Position HDMI module.
CMUSBAABL	USB module.
CM35MSCBLY	3.5 Stereo coupler.

*Additional colors available, please see Panduit.com.

Field Terminable Plugs

- Simple to attach field terminable plugs in straight and angled versions
- Category 6A performance, also compatible with Category 6 and 5e systems



FPS6X88MTG

Description	Straight	Angled
Unshielded Category 6A (Compatible with Category 5e, 6 and 6A)	FP6X88MTG	FPUD6X88MTG
Shielded Category 6A (Compatible with Category 5e, 6 and 6A)	FPS6X88MTG	FPSUD6X88MTG

Patch Cords

- Supports IEE 802.3AF, 802.3at, and 802.3bt type 3 and type 4 for PoE applications up to 100 W
- Patented tangle-free latch



UTP28SP7BU

Description	Category 5e	Category 6	Category 6A
Standard patch cords	UTPCH*^Y	UTPSP*^Y	UTP6A*^
28 AWG patch cords	UTP28CH*^	UTP28SP*^	UTP28X*^

* = Length in Feet.
^ = 2 character color code.



Off White (default, no designation needed), BL = Black, BU = Blue, GR = Green, RD = Red, OR = Orange, VL = Violet, YL = Yellow, GY = Gray.

Note: Colors shown may differ slightly from actual cable colors.



STP6X3MIG

Description	Category 5e	Category 6/6A
Standard patch cords	STPCH*MB#	STP6X*M^
28 AWG patch cords	—	STP28X*M^

* = Length in Meters.
= Boot color, (Category 5e only) options BL (Black), BU (Blue), GR (Green), RD (Red), YL (Yellow), BR (Brown).
^ = 2 character cable color code.



IG = International Gray, BL = Black, BU = Blue, GR = Green, RD = Red, OR = Orange, VL = Violet, YL = Yellow.

Note: Colors shown may differ slightly from actual cable colors.

HDMI Patch Cords

- HDMI 2.0 certified premium
- Capable of 4K video transmission



HDMI1MWH

Part Number	Description
HDMI1MBL*	HDMI 2.0 patch cord, 1m, Black. 3rd party certified to meet HDMI 2.0 specification.
HDMI10M	Active optical HDMI cable with detachable connector heads, 10m.

*Replace BL with WH for White; Replace 1 to designate other lengths: 2 (2 meters) or 4 (4 meters).

Patch Panels

- Accepts Mini-Com® Modules, which snap in and out for easy moves, adds, and changes
- Facilitates proper bend radius control



CPP48WBLY

Part Number	Description
CPP24WBLY	Mini-Com® 24-Port Modular Patch Panel with Faceplates, Black, 1 RU.
CPP48WBLY	Mini-Com® 48-Port Modular Patch Panel with Faceplates, Black, 2 RU.
CPP24FMWBLY	Mini-Com® 24-Port Modular Flush Mount Patch Panel, Black, 1 RU.
CPP48FMWBLY	Mini-Com® 48-Port Modular Flush Mount Patch Panel, Black, 2 RU.

Faceplates

- Accepts Mini-Com® Modules for UTP and STP, fiber optic, and audio visual
- Replacement labels/label covers available where applicable



CFPE1WHY



CFPL2WHY



CFP4EI

Part Number	Description
CFPE1**Y	Mini-Com® Executive Series Single Gang Faceplate accepts 1 Mini-Com® Module, includes label and label cover.
CPFE2**Y	Mini-Com® Executive Series Single Gang Faceplate accepts 2 Mini-Com® Modules, includes label and label cover.
CFPE4**Y	Mini-Com® Executive Series Single Gang Faceplate accepts 4 Mini-Com® Modules, includes label and label cover.
CFPL1**Y	Mini-Com® Classic Series Single Gang Vertical Faceplate accepts 1 Mini-Com® Module, includes label and label cover.
CFPL2**Y	Mini-Com® Classic Series Single Gang Vertical Faceplate accepts 2 Mini-Com® Modules, includes label and label cover.
CFPL4**Y	Mini-Com® Classic Series Single Gang Vertical Faceplate accepts 4 Mini-Com® Modules, includes label and label cover.
CFP1**	Mini-Com® Classic Series Single Gang Vertical Faceplate accepts 1 Mini-Com® Module.
CFP2**	Mini-Com® Classic Series Single Gang Vertical Faceplate accepts 2 Mini-Com® Modules.
CFP4**	Mini-Com® Classic Series Single Gang Vertical Faceplate accepts 4 Mini-Com® Modules.

Available colors are IW (Off White), WH (White), IG (International Gray), EI (Electric Ivory), or BL (Black).



Surface Mount Boxes

- Offer a variety of mounting options, allowing Mini-Com® Modules to be mounted on a variety of surfaces including walls, metal surfaces, and furniture
- Mount easily with supplied mounting screws, adhesive tape, or optional magnet



CBXQ2IWA

Part Number	Description
CBXQ1IW-A	Surface mount box accepts 1 Mini-Com® Module, Off White.
CBXQ2IW-A	Surface mount box accepts 2 Mini-Com® Modules, Off White.
CBXQ4IW-A	Surface mount box accepts 4 Mini-Com® Modules, Off White.
CBXQ6IW-A	Surface mount box accepts 6 Mini-Com® Modules, Off White.

Additional colors available; visit www.panduit.com for complete selection.

Table Boxes

- Pre-populated with power outlets
- Once installed, faceplates can be removed for future moves, adds, and changes

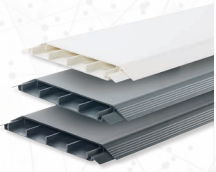


PND110

Part Number	Description
PND100	Nook Style Table Box. Includes Mini-Com® and NetKey® Faceplates, power receptacle with two type B plugs and two USB 2.0 plugs for charging. Ideal for clean installation to a conference room table.
PND110	Tilt-up Style Table Box. Unique leaf spring design that lasts a lifetime. Includes Mini-Com® and NetKey® Faceplates, power receptacle with two type B plugs. Ideal for clean installation to a conference room table.
PND400	Retractable HDMI Cable for Cable Nook Box with mounting bracket.

Above Floor Raceway

- ADA Compliant
- Tamper resistant base and cover



AFR4BCBL6

Part Number	Description
AFR4BCBL6	Above Floor Raceway, 4 channel raceway, base and cover, 6 foot length, Black.
AFR4JB2SBL	Above Floor Raceway, power rated two piece snap together junction box, Black.
AFR4TRT70BL	Above Floor Raceway, transition fitting from above floor raceway to T70, Black.
AFR4RABL	Above Floor Raceway, right angle fitting, Black.
AFR4CCBL	Above Floor Raceway, coupler fitting, Black.
AFR4ECBL	Above Floor Raceway, end cap fitting, Black.

Replace BL with IW or OS for International White or Office Slate respectively.

In-Wall Boxes

- Full grid pattern for customized equipment placement
- Knockouts for power receptacle and cable pass through



CMBBSWH

Part Number	Description
CMBBSWH	Small In-Wall Box, 16" x 6" x 3.4" with grid pattern for limitless configuration. Includes knockout for power outlet and cable pass through bezel. Ideal for mounting equipment behind monitors.
CMBBLWH	Large In-Wall Box, 16" x 12.25" x 3.4" with grid pattern for limitless configuration. Includes knockout for power outlet and cable pass through bezel. Ideal for mounting equipment behind monitors.
CMBBCMR	Cable management D-ring.
CMBBRKT	Equipment bracket.

Wall Mount Cabinets

- Holds 12-26 RU of active and passive networking equipment
- Working load rating of 250 lbs. - 350 lbs.



PZWMC12W

Part Number	Description
PZWMC12W	PanZone® Wall Mount Cabinet with Windowed Front Door, 12 RU, Black.
PZWMC18W	PanZone® Wall Mount Cabinet with Windowed Front Door, 18 RU, Black.
PZWMC26W	PanZone® Wall Mount Cabinet with Windowed Front Door, 26 RU, Black.

Racks and Cable Management

- Provide a reliable foundation for mounting networking equipment
- Effectively route and manage cable bundles with vertical and horizontal cable managers



R2P PR2VD08



WMPFSE

Part Number	Description
R2P	Two post rack, 45 RU, Black.
R4P	Four post rack, 45 RU, Black.
SRM19FM1	Rack mount shelf holds test gear, computer equipment and small networking devices on 3 inch or 6 inch channel two post racks. Steel, 1 RU, 45 lb. load capacity, Black.
PR2VD06	PatchRunner™2 Vertical Cable Manager, 6 inch width, 45 RU, dual-sided, Black. Includes two full-length metal, dual-hinged, push-to-close doors.
PR2VD08	PatchRunner™2 Vertical Cable Manager, 8 inch width, 45 RU, dual-sided, Black. Includes two full-length metal, dual-hinged, push-to-close doors.
WMPV45E	NetRunner™ Vertical Cable Manager, dual-sided, 45 RU, ABS plastic, Black. Includes covers.
WMPVF45E	NetRunner™ Vertical Cable Manager, single-sided, 45 RU, ABS plastic, Black. Includes covers.
NMF1	NetManager™ High Capacity Horizontal Cable Manager with Hinged Front Cover, ABS plastic, 1 RU, Black.
NMF2	NetManager™ High Capacity Horizontal Cable Manager with Hinged Front Cover, ABS plastic, 2 RU, Black.
WMPFSE	PatchLink™ Horizontal Cable Manager with Front Cover, ABS plastic, 1 RU, Black.
WMPF1E	PatchLink™ Horizontal Cable Manager with Front Cover, ABS plastic, 2 RU, Black.

Lock-in and Block-out Devices

- Blocks open ports; prevents unauthorized access to equipment and networks
- Requires key to lock and unlock



SKUSBA-V



SKMKEY



LS8EQ



TDP43ME

Part Number	Description
SKUSBA-V	SmartKeeper USB Type A blockout device; requires master key (SKMKEY) to unlock and remove.
SKUSBC	SmartKeeper USB Type C blockout device; requires master key (SKMKEY) to unlock and remove.
SKRJ45RD-X	SmartKeeper RJ45 jack module blockout device; requires master key (SKMKEY) to unlock and remove.
SKMKEY	SmartKeeper Master Key for removal of all SmartKeeper blockout devices.

Identification and Labeling Systems

- Variety of labeling systems and labels enable quick and easy network identification

Part Number	Description
LS8EQ	Includes hand-held printer with QWERTY keypad, one cassette of S100X150VAC self-laminating labels, six AA alkaline batteries and quick reference card.
TDP43ME	300 dpi printer; includes printer, Panduit® Easy-Mark™ Labeling Software, RMEH4BL hybrid black ribbon, AC power adapter with US power cord, USB cable, user manual, quick start card, and driver disk.
S100X150VA1Y	Self-laminating, white vinyl label for use with thermal transfer desktop printer.

For complete identification offering, reference the Panduit® Network Infrastructure Solutions Catalog (NCCB71--SA-ENG) or visit www.panduit.com.

Delivering more than Innovation

Innovative solutions help you solve crucial issues in your facility, but we're more than just innovation and engineering ingenuity. Peace of mind is important to our customers, and we do what we can to make sure our customers and installers can sleep at night. We do extensive testing on our products and back up everything with a world-class warranty, ensuring that if anything goes wrong, we'll make it right.

And, you'll find award-winning customer and technical support to help answer questions and provide guidance at any time during the project.

Global Presence, Local Support

Panduit products, including Atlona AV solutions, are supported by a global partner ecosystem. Trusted partners and distributors make it simple to specify the same solution for operations around the globe, whether your operations are in Lima, Ohio or Lima, Peru, in Paris, Texas, or Paris, France. Simplify purchasing, sourcing, and project design with one solution that you know and trust, designed, developed and deployed by Panduit and Atlona certified partners.

Meeting the Demands of the Industry

Atlona is proud to partner with several leading audio and video technology companies.

Technologies supported by Atlona Products include:

- AES67
- AirPlay®
- Dolby Atmos®
- Dante™
- DisplayPort™
- Dolby Vision™
- Google Cast™
- HDBaseT™
- HDMI®
- HDR10
- HLG
- Miracast™
- PoE
- USB-C™
- And more



PANDUIT®

Panduit Corp.
World Headquarters
Tinley Park, IL 60487

800.777.3300

www.panduit.com



a **PANDUIT** company

Atlona Incorporated
70 Daggett Drive
San Jose, CA 95134

877.536.3976

www.atlona.com

All trademarks, service marks, trade names, product names, and logos appearing in this document are the property of their respective owners.