

a first look at the data center of tomorrow

Mighty Mo® 10
and Mighty Mo 6
Advanced Cable
Management

Systems for Data
Centers and LAN
Applications

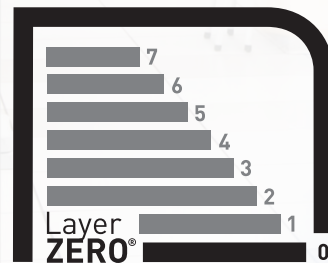


 **legrand**®

Ortronics

Layer Zero®

NETWORK DESIGN



Legrand | Ortronics is revolutionizing networking by adding a new layer to the traditional network architecture. The OSI network model is the accepted framework for network design and suggests seven layers to use for network planning. The bottom layer of this model is Layer One – the physical layer, which is the structured cabling itself, but what Layer One does not include is the physical SUPPORT, or the infrastructure, for the cabling.

Legrand | Ortronics introduces Layer Zero as a new foundation for the OSI model to address the critical role that infrastructure plays in network performance and provide a new level of stability to the network. To ensure maximum network efficiency, we offer a complete range of Layer Zero solutions designed to:

- Reduce power consumption and cooling costs
- Reduce the risk of equipment failure
- Enhance overall system performance

the MIGHTY MO[®] data center

THREE KEY FACTORS

are essential considerations when evaluating cable management systems for today's data centers, storage area networks (SAN), and large premise networks.

Airflow

The heat generated from increased server densities and higher speed network equipment makes cooling a top concern for today's IT administrators and data center managers. With heat being the most common reason for equipment failures, proper cooling is essential to reliable operations. Designed specifically to improve airflow, Ortronics® Mighty Mo 10 cable management system enables more efficient cooling and reduces power consumption.

Density

Mighty Mo cable management systems are fully equipped to handle the density of today's high performance networks while allowing for easy moves, adds, and changes. Both the Mighty Mo 10 and Mighty Mo 6 systems provide ample capacity for a minimum of 48 Category 6a patch cords per rack unit on a single side of the equipment, which is often necessary to avoid a fan tray, power supply or other removable part of the equipment.

Protection & Performance

To ensure maximum network performance, Mighty Mo cable management systems protect patch cords, cable, and equipment ports from damage by maintaining proper bend radius requirements, reducing tension on plugs and jacks, protecting network equipment ports, and supporting large cable bundles within the rack.

Maximum airflow, minimum effort

The Mighty Mo[®] 10, the next generation of Ortronics advanced cable management system, is the first system to combine enhanced cable management with superior airflow in a rack.

For efficient cooling, proper airflow must be maintained in the room, in underfloor and overhead plenums, and within the cable management rack. The preferred method of cooling in today's data centers is the cold aisle/hot aisle approach.

The Mighty Mo 10 is ideal for maintaining cold aisle/hot aisle airflow, whether your network equipment is front-to-back, bottom or side venting. The Mighty Mo 10 features honeycomb side rails and baffles that redirect airflow from side vented equipment from the cold aisle to the hot aisle. The perforated side rails allow ventilated air to be exhausted, while the baffles ensure the proper flow of air from cold aisle to hot aisle, even with side ventilation. This passive system eliminates the additional 15 to 20 W of power that typical fans consume, making for a more energy-efficient data center with reduced power consumption and energy costs.



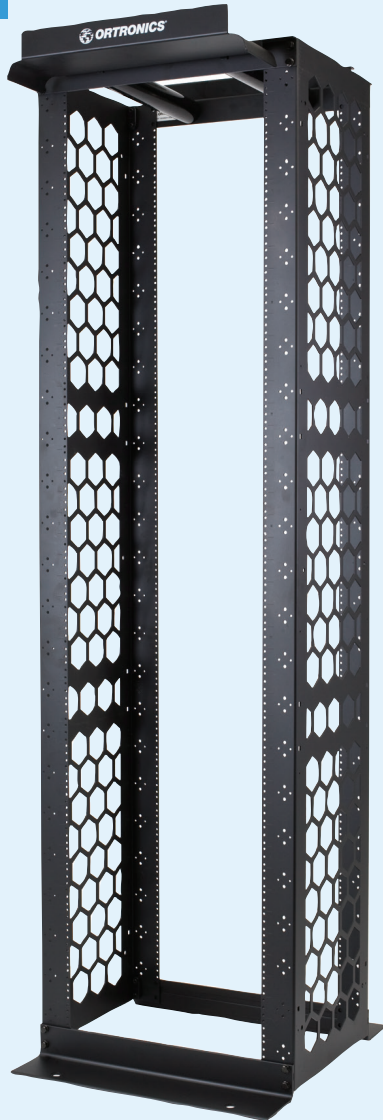
Honeycomb side rails remove the barrier to network equipment airflow.

Baffles redirect airflow
from side-vented
network equipment
from cold aisle
to hot aisle for
maximum efficiency.



MIGHTY MO® 10

MIGHTY MO 10



Mighty Mo 10

Cable Management Racks

Mighty Mo 10 racks are designed to maximize the airflow of network equipment. Honeycomb side rails and baffles combine to manage intake and exhaust air creating cold aisle/hot aisle air distribution from side vented equipment. The bottom flange turns inward, allowing it to fit on a 2'x2' floor tile.

OR-MM10716

16.25" channel depth, 7' high, black, 45 rack units

OR-MM10816

16.25" channel depth, 8' high, black, 51 rack units

Note: Static capacity 2,000 lbs

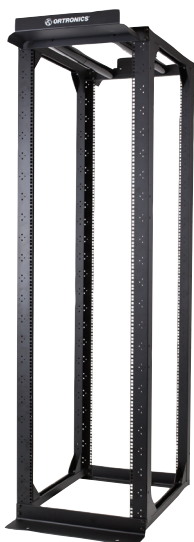
Assembly required

Patent pending



06

WWW.LEGRAND.US/ORTRONICS



Mighty Mo 10

Server Rack

The Mighty Mo 10 Server Rack works with all of the Mighty Mo 6 and 10 racks and cable management. The mounting rails adjust from 12.5" to 30", independent of the structural members, allowing the rails to be adjusted after the rack is installed. Mighty Mo vertical managers can be mounted front or rear. Color is black.

OR-MM107SVR

Four-post aluminum frame with steel EIA rails, supplied with 50 #12-24 cage nuts and screws, 45 rack units, 7' high.

OR-MM107SVRABR

Server rack baffle rail for mounting airflow baffles

Note: Static capacity: 2,000 lbs (evenly distributed). Assembly required.





Mighty Mo 10 Airflow Baffles ↗

Mighty Mo 10 airflow baffles mount between racks and direct intake and exhaust air on side flow network equipment from cold aisle to hot aisle. Patent No. 8,130,494.



↖ **Mighty Mo 10 Vented Door Assemblies**

Door design allows mounting to the front or rear of any Mighty Mo 6 or Mighty Mo 10 rack. The double-hinged door is lockable, pivots to the right or left, and is easily removed.



↖ **Mighty Mo 10 Cable Management Cage with Door**

Cage design promotes efficient routing of patch cords between racks. Hinged doors allow easy access during moves, adds, and changes. 16" wide cage creates a 12.25" gap between racks. 12" wide cage creates a 8.25" gap between racks for front-to-back routing of equipment cables and patch cords. Both are supplied with four spools and 12 bend-limiting clips.

Mighty Mo 10 Airflow Baffles

OR-MM10AB71612

For use with 7' x 16" Mighty Mo 10 rack and 12" wide Mighty Mo 10 cage

OR-MM10AB71616

For use with 7' x 16" Mighty Mo 10 rack and 16" wide Mighty Mo 10 cage

OR-MM10AB81612

For use with 8' x 16" Mighty Mo 10 rack and 12" wide Mighty Mo 10 cage

OR-MM10AB81616

For use with 8' x 16" Mighty Mo 10 rack and 16" wide Mighty Mo 10 cage

OR-MM10AB73012

For use with 7' Mighty Mo 10 server rack and 12" wide Mighty Mo 10 cage

OR-MM10AB73016

For use with 7' Mighty Mo 10 server rack and 16" wide Mighty Mo 10 cage

Mighty Mo 10 Vented Door Assemblies

OR-MM10VDA7248

7' x 24" with 8.38" of clearance behind door for use with VMD-style vertical managers

OR-MM10VDA7244

7' x 24" with 4.38" of clearance behind door for use without vertical managers

Mighty Mo 10 Cable Management Cage with Door

OR-MM10VMD712

With door, 12.13" x 13" x 7', 45 rack units

OR-MM10VMD716

With door, 16.38" x 13" x 7', 45 rack units

OR-MM10VMD812

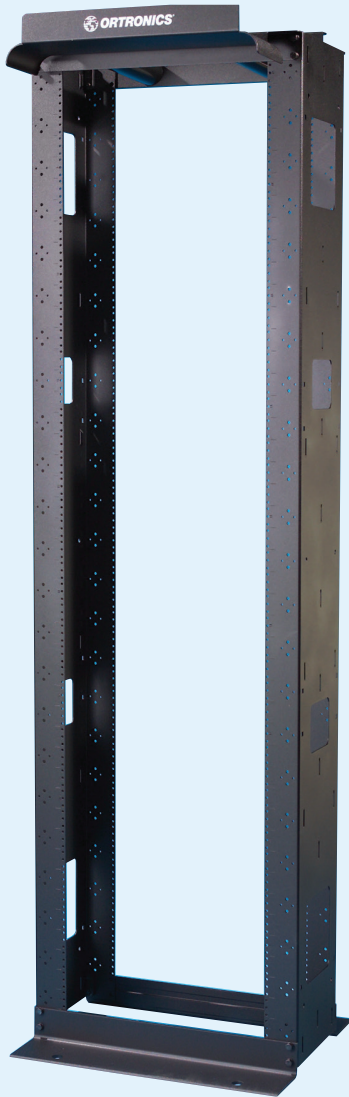
With door, 12.13" x 13" x 8', 51 rack units

OR-MM10VMD816

With door, 16.38" x 13" x 8', 51 rack units

Patent Numbers 6,946,605, 6,968,647 and 7,026,553

Note: Unless otherwise noted, all Mighty Mo 6 and Mighty Mo 10 components are compatible with both racks.



Mighty Mo 6

Cable Management Racks

Mighty Mo® 6 racks are available in 6.5", 10.5" and 16.25" channel depths. The 16.25" size is designed specifically for large and heavy network equipment. The bottom flange on the 16.25" standard rack turns inward, allowing it to fit on a 2' x 2' floor tile.

OR-MM6706

6.5" channel depth, 7' high, black, 45 rack units

OR-MM6710

10.5" channel depth, 7' high, black, 45 rack units

OR-MM6810

10.5" channel depth, 8' high, black, 51 rack units

OR-MM6716

16.25" channel depth, 7' high, black, 45 rack units

OR-MM6816

16.25" channel depth, 8' high, black, 51 rack units

Note: Static capacity: 2,000 lbs (evenly distributed). Assembly required.

Patent No. D360,189



Mighty Mo Speednut

Faster Assembly!

Included with every Mighty Mo cable management rack!

The Mighty Mo Speednut increases the speed and ease of assembly while adding extra strength to your racks. Hold the Speednut behind the rack while hand-tightening the bolts in front. Speednut eliminates the need for a second wrench.

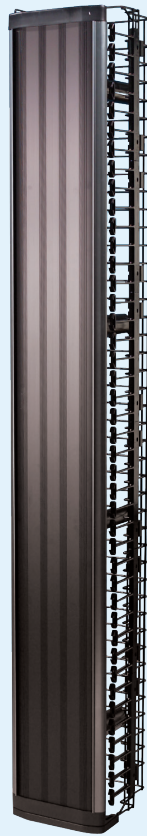
Finish tightening with a wrench and your rack is ready to load.

Vertical Managers promote efficient routing of patch cords between racks.



Mighty Mo 6 Cable Management Cage with Door

Hinged doors allow easy access during moves, adds, and changes. 10" wide cage creates a 6.5" gap between racks. 6" wide cage creates a 2.5" gap between racks for front-to-back routing of equipment cables and patch cords. Both are supplied with four spools and 12 bend-limiting clips.



Mighty Mo 6 Vertical Management Cage with Latches

Hinged latches allow easy access during moves, adds, and changes. 6" wide cage creates a 2.5" gap between racks for front-to-back routing of equipment cables and patch cords.



Mighty Mo 6 Vertical Management Cage with Cover

Dual snap-on hinged covers allow easy access during moves, adds, and changes. 6" wide cage creates a 2.5" gap between racks for front-to-back routing of equipment cables and patch cords. 6" wide cage is supplied with four spools and 12 bend-limiting clips.

Mighty Mo 6 Cable Management Cage with Door

OR-MM6VMD710
With door, 10" x 13" x 7'

OR-MM6VMD706
With door, 6" x 8" x 7'

OR-MM6VMD810
With door, 10" x 13" x 8'

OR-MM6VMD806
With door, 6" x 8" x 8'

Patent No. 6,946,605, 6,968,647 and 7,026,553

Mighty Mo 6 Vertical Cable Management Cage with Cover

OR-MM6VMS704
With cover, 4" x 7" x 7'

OR-MM6VMS706
With cover, 6" x 7" x 7'

OR-MM6VMS804
With cover, 4" x 7" x 8'

OR-MM6VMS806
With cover, 6" x 7" x 8'

Patent No. 6,946,605, 7,026,553

Mighty Mo 6 Vertical Cable Management Cage with Latches

OR-MM6VML704
With latches, 4" x 6" x 7'

OR-MM6VML706
With latches, 6" x 6" x 7'

OR-MM6VML804
With latches, 4" x 6" x 8'

OR-MM6VML806
With latches, 6" x 6" x 8'

Patent No. 6,365,834

Note: Unless otherwise noted, all Mighty Mo 6 and Mighty Mo 10 components are compatible with both racks.

MIGHTY MO® ACCESSORIES



Cable Management Rings

These rings allow efficient routing of patch or cross connect cables between distribution racks. They can be mounted where needed on the front and back of the Mighty Mo racks. Black. Includes mounting hardware.



Cable Management Rings

These black plastic rings flex at the end for easy insertion or removal of cross connect cables. They snap in place on the front and back of the Mighty Mo racks. Black. Includes mounting hardware.

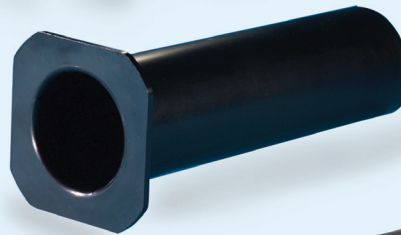
Mighty Mo Vertical Management Bracket Kit

Vertical management bracket kit includes 4 brackets and all the hardware needed to mount 2 Mighty Mo 6 vertical managers to a standard EIA rack.



Mighty Mo Cable Management Spools

Cable management spools effectively manage excess copper or fiber cable slack. They mount at rack unit intervals, providing flexibility and proper bend radius for cables on the front of the 6" wide cage with door or on the front and rear of the 10" wide cage with door. Set of four.

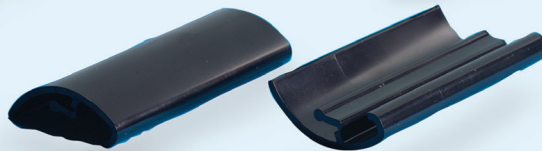


Mighty Mo 10 Waterfall Extension



Mighty Mo Bend Limiting Clip

Bend limiting clips snap on to any finger on the vertical management cage to provide bend limitation for fiber jumpers entering and exiting the cage. Set of 12.



Mighty Mo Channel Bend Limiters

Mighty Mo Channel Bend Limiters clip onto the top edge of Mighty Mo channels providing the proper bend radius for cables entering the channel. Set of 2. Black.



Cable Management Rings

OR-60400017
2" x 6", black, package of 14
OR-60400062
2" x 6", black, package of 2

Cable Management Rings

OR-60400614
Snap-type, 1.75" X 6", package of 14
OR-60400542
Snap-type, 1.75" X 6", package of 2
OR-60400314
Snap-type, 1.75" x 3", package of 14
OR-60400302
Snap-type, 1.75" x 3", package of 2

Mighty Mo Cable Management Spools

OR-MM6CMS10
11" long for 10" vertical management cage with door

OR-MM6CMS8

8" long for 10" vertical management cage with door

OR-MM6CMS6

6" long for 6" vertical management cage with door

Mighty Mo 10 Waterfall Extension

OR-MM10WFE
Increases the height of the front flange of the Mighty Mo waterfall by 2.25" when additional cable capacity is required.

Mighty Mo Channel Bend Limiters

OR-MM6CBL06
For use with Mighty Mo racks with 6.5" channels
OR-MM6CBL10
For use with Mighty Mo racks with 10.5" channels

OR-MM6CBL16

For use with Mighty Mo racks with 10.5" channels

Mighty Mo 6 Cable Trough

OR-MM6CT4RU
Cable trough, 4RU
OR-MM6CT4RUK
Cable trough kit, 4RU

Mighty Mo Vertical Management Bracket Kit

OR-60400687
Kit consists of 4 brackets, 8 panel mounting screws and 4 cage mounting screws.

Mighty Mo Bend Limiting Clip

OR-MM6BLC
3.25" long for vertical management cages with door or cover

Mighty Mo® 6 Cable Trough ↘

For supporting fiber cables at the bottom of Mighty Mo racks. The kit includes an extension that bridges the space between racks.

Mighty Mo Runway Ceiling Extension Kit ↘

Mounts on the top of Mighty Mo racks. The kit extends one channel 24" and is supplied with a cover to hide the cables.

Extension uses rack hardware for mounting. One per kit with cover.

↙ **Mighty Mo End Panel**

The end panel is used to finish the end of a row of Mighty Mo racks. It mounts flush and provides a surface for the vertical cable management channel while concealing cables in the rack channel. Includes mounting hardware.

Mighty Mo Cable Runway Mounting Brackets ↗

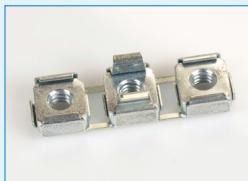
Mounts to top of Mighty Mo racks. Mounting location for 6"-18" ladder racking on the side.

↙ **Mighty Mo Rack Base Dust Cover**

Prevents dust and debris from accumulating in rack base. Scored for bending to clear cables from floor up to channel.

↙ **Rack Unit Cage Nuts**

Ortronics® rack unit cage nuts provide steel nuts in all three positions of a 1 3/4" rack unit with the installation of a single multiple nut.



Mighty Mo Cable Runway Mounting Brackets

OR-MM6CRB06

For rack with 6.5" channel depth

OR-MM6CRB10

For rack with 10.5" channel depth

OR-MM6CRB16

For rack with 16.25" channel depth

OR-MM10CRBSVR

For Mighty Mo 10 server rack

OR-MM10CRBRSVR

For rear of Mighty Mo 10 server rack

Mighty Mo End Panel

STANDARD For use with 6" Mighty Mo 6 vertical cable managers

OR-MM6EP706

For 7' rack with 6.5" channel depth

OR-MM6EP710

For 7' rack with 10.5" channel depth

OR-MM6EP716

For 7' rack with 16.25" channel depth

OR-MM6EP810

For 8' rack with 10.5" channel depth

OR-MM6EP816

For 8' rack with 16.25" channel depth

NARROW For use with 4" Mighty Mo 6 vertical cable managers

OR-MM6EPN706

For 7' rack with 6.5" channel

OR-MM6EPN710

For 7' rack with 10.5" channel

OR-MM6EPN716

For 7' rack with 16.25" channel

Mighty Mo Rack Base Dust Cover

OR-MM6BDC06

For 6.5" channel standard rack

OR-MM6BDC10

For 10.5" channel standard rack

OR-MM6BDC16

For 16.25" channel standard rack

Mighty Mo Runway Ceiling Extension Kit

OR-MM6CEK10

For rack with 10.5" channel depth

OR-MM6CEK16

For rack with 16.25" channel depth

Rack Unit Cage Nuts

OR-RU-1224CN

Thread size: #12-24 package of 50

OR-RU-M6X1CN

Thread size: M6 (metric) package of 50

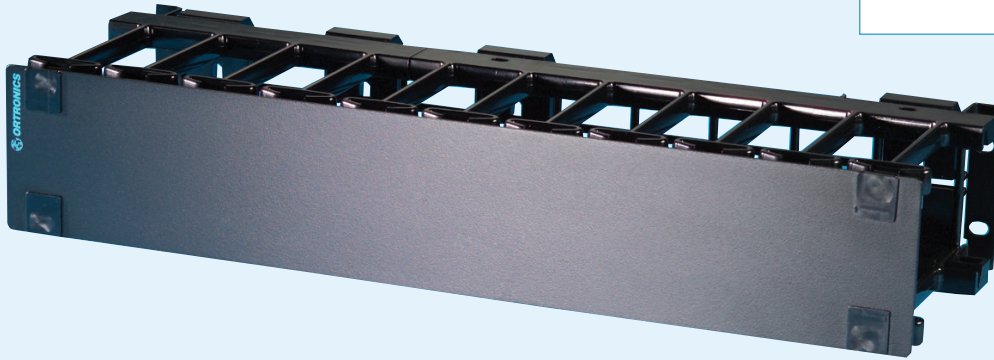
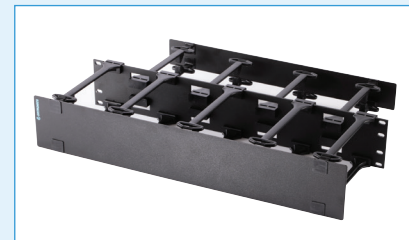
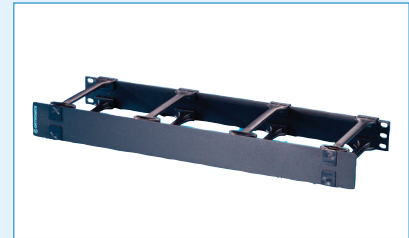
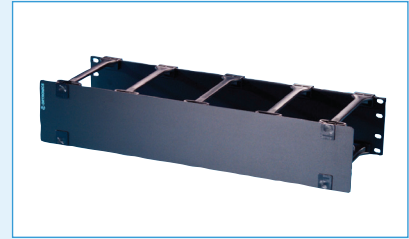
MIGHTY MO® HORIZONTAL MANAGEMENT



Mighty Mo 6 Horizontal Management Panels

Ortronics® Mighty Mo cable management panels are optimized to organize patch cords vertically and horizontally on our Mighty Mo racks.

They will also mount on any standard 19" rack. The finger design encourages defined and traceable routing of individual patch cords.



Mighty Mo 6 Horizontal Management Panels

OR-MM6HMF1RU

Multiple fingers, cover, one rack unit (1.75" x 19"), black

OR-MM6HMF2RU

Multiple fingers, cover, two rack units (3.5" x 19"), black

OR-MM6HMF4RU

Multiple fingers, cover, four rack units (7.0" x 19"), black

OR-MM6HM61RU

Six-port finger spacing, cover, one rack unit (1.75" x 19"), black

OR-MM6HM62RU

Six-port finger spacing, cover, two rack units (3.5" x 19"), black

OR-MM6HM81RU

Eight-port finger spacing, cover, two rack units (1.75" x 19"), black

OR-MM6HM82RU

Eight-port finger spacing, two rack units (3.5" x 19"), black

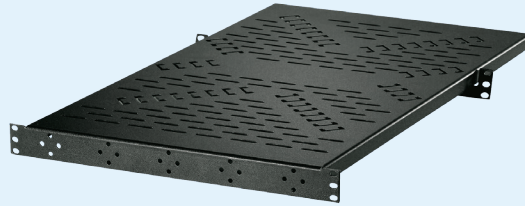
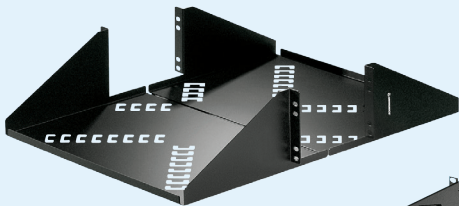
OR-MM6HM6D2RU

Six-port finger spacing, double-sided, covers, two rack units (3.5" x 19"), black



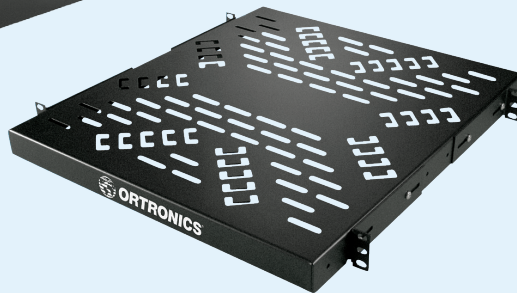
Double Equipment Shelves for Mighty Mo Racks ↕

Ortronics® double equipment shelf supports miscellaneous equipment or test gear. The double shelves work with Mighty Mo racks with 6.5" deep channels. Color is black.



Mighty Mo Server Rack Equipment Shelf ↗

The Mighty Mo server rack equipment shelf has a fixed front flange with an infinitely adjustable rear flange that allows for secure four point mounting as deep as 30". Shelf width is 17.25". Color is black.



Mighty Mo Monitor Strap Kit

The monitor strap kit consists of hook and loop straps which can secure a monitor with a base of any size or shape to all equipment shelves on this page. The monitor screen remains fully adjustable.

Color is black. ↕

↖ **Four Point Equipment Shelf for Mighty Mo Racks and Cabinets**

Ortronics four point equipment shelf supports miscellaneous equipment or test gear. The one unit shelf works with Mighty Mo racks with all depth channels and Mighty Mo cabinets 24" and deeper. Shelf is 17.25" wide. Color is black.

Double Equipment Shelves for Mighty Mo Racks

OR-60400355
19" x 5.25" x 24", 150 lbs capacity, Shelf width is 17".

OR-60400517
23" x 5.25" x 24", 150 lbs capacity, Shelf width is 21.37".

OR-60400655
19" x 5.25" x 24", 150 lbs capacity, Ortronics extra width double equipment shelf is 18.75" wide in front and back; usable width between mounting flanges is 17.5".

Four Point Equipment Shelf for Mighty Mo Racks and Cabinets

OR-604045681
19" x 1.72" x 20", 100 lbs capacity

Note: Equipment shelf is slotted to accept the Ortronics monitor strap kit OR-70700126.

Mighty Mo Server Rack Equipment Shelf

OR-60400538
19" x 1.7" x 30", 200 lbs capacity

Note: Shelf is slotted to accept the Ortronics monitor strap kit OR-70700126. Includes #12-24 mounting hardware.

Mighty Mo Monitor Strap Kit

OR-70700126
Hook and loop type strap kit



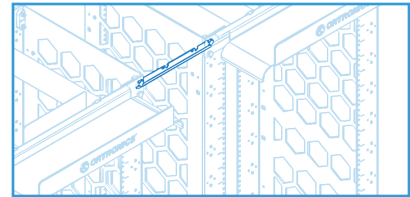
speed up your spacing

Included with every Mighty Mo cable management rack! The Mighty Mo Speedbar installs ahead of the vertical managers and properly spaces the racks so that connectivity, cable and equipment can be installed before the vertical managers. With more room to terminate and dress, your installation goes faster and installing heavy equipment is easier than ever.

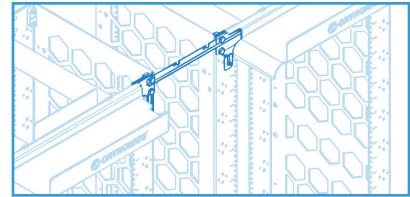
Three Speedbars are supplied with every Mighty Mo rack. They are notched to provide the correct rack spacing for all four widths of vertical managers.

FOUR easy steps

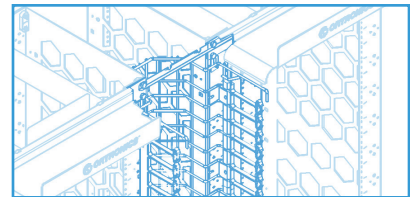
1 Assemble the racks and install the Speedbars at the spacing desired. Two bars on the front and one bar at the bottom rear keep the racks spaced and parallel as you fasten them to the floor. Install your connectivity and equipment with no managers to get in the way.



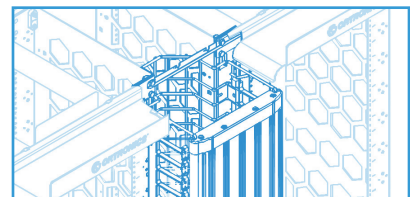
2 Install the two hanging clips that come with every Mighty Mo vertical manager.



3 Hang the vertical manager in place and secure with the blunt nose self-threading fasteners. Install the slack storage spools and the bend limiting clips. Now the racks are ready for patch cords and equipment cables.



4 Unwrap and hang the doors in place to complete the installation.





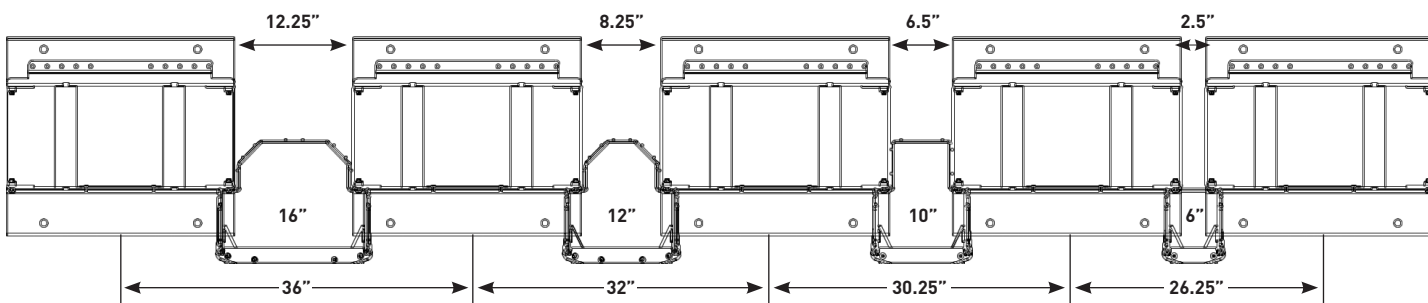
Cable Fill Capacities for Ortronics® Mighty Mo Cable Management Products

Part Number	Description	Usable Area (sq. in.)	Cable O.D.(in.)	Recommended Cable Fill (40%)			Maximum Cable Fill (60%)		
				Cat 5e	Cat 6	Cat 6a	Cat 5e	Cat 6	Cat 6a
				0.215	0.230	0.290	0.215	0.230	0.290
MM10VMD716	MM10 Vertical Cable Management w/Door, 16" X 13" X 7'	134	1608	1340	938	2278	2010	1340	
MM10VMD712	MM10 Vertical Cable Management w/Door, 12" X 13" X 7'	90	1080	900	630	1530	1350	900	
MM10VMD816	MM10 Vertical Cable Management w/Door, 16" X 13" X 8'	134	1608	1340	938	2278	2010	1340	
MM10VMD812	MM10 Vertical Cable Management w/Door, 12" X 13" X 8'	90	1080	900	630	1530	1350	900	
MM6VMD710	MM6 Vertical Cable Management w/Door, 10" X 13" X 7'	73	876	730	511	1241	1095	730	
MM6VMD706	MM6 Vertical Cable Management w/Door, 6" X 8" X 7'	25	300	250	175	425	375	250	
MM6VMD810	MM6 Vertical Cable Management w/Door, 10" X 13" X 8'	73	876	730	511	1241	1095	730	
MM6VMD806	MM6 Vertical Cable Management w/Door, 6" X 8" X 8'	25	300	250	175	425	375	250	
MM6VMS704	MM6 Vertical Cable Management w/Split Covers, 4" X 7" X 7'	15	180	150	105	255	225	150	
MM6VMS706	MM6 Vertical Cable Management w/Split Covers, 6" X 7" X 7'	25	300	250	175	425	375	250	
MM6VMS804	MM6 Vertical Cable Management w/Split Covers, 4" X 7" X 8'	15	180	150	105	255	225	150	
MM6VMS806	MM6 Vertical Cable Management w/Split Covers, 6" X 7" X 8'	25	300	250	175	425	375	250	
MM6VML704	MM6 Vertical Cable Management Cage with Latches, 4" X 6" X 7'	16	192	160	112	272	240	160	
MM6VML706	MM6 Vertical Cable Management Cage with Latches, 6" X 6" X 7'	26	312	260	182	442	390	260	
MM6VML804	MM6 Vertical Cable Management Cage with Latches, 4" X 6" X 8'	16	192	160	112	272	240	160	
MM6VML806	MM6 Vertical Cable Management Cage with Latches, 6" X 6" X 8'	26	312	260	182	442	390	260	
MM6HMF1RU	MM6 Horizontal Cable Management Panel, Multiple Fingers, 1RU	5	60	50	35	85	75	50	
MM6HMF2RU	MM6 Horizontal Cable Management Panel, Multiple Fingers, 2RU	13.5	162	135	95	230	203	135	
MM6HMF4RU	MM6 Horizontal Cable Management Panel, Multiple Fingers, 4RU	32.5	390	325	228	553	488	325	
MM6HM61RU	MM6 Horizontal Cable Management Panel, Six-Port Spacing, 1RU	5	60	50	35	85	75	50	
MM6HM62RU	MM6 Horizontal Cable Management Panel, Six-Port Spacing, 2RU	13.5	162	135	95	230	203	135	
MM6HM81RU	MM6 Horizontal Cable Management Panel, Eight-Port Spacing, 1RU	5	60	50	35	85	75	50	
MM6HM82RU	MM6 Horizontal Cable Management Panel, Eight-Port Spacing, 2RU	13.5	162	135	95	230	203	135	
MM6HM6D2RU	MM6 Horizontal Cable Management Panel, Six-Port, Double-Sided, 2RU	Front	150	125	88	213	188	125	
		Rear	60	50	35	85	75	50	

MIGHTY MO CABLE CAPACITY

NetClear® Horizontal Cable Capacities for Ortronics Mighty Mo Racks

Part Number	Description	Usable Area (sq. in.)	24 CNT Bundle O.D. (In)	Single Channel Capacity			Total Rack Capacity		
				Cat 5e	Cat 6	Cat 6a	Cat 5e	Cat 6	Cat 6a
				1.125"	1.25"	1.625"	1.625"	1.25"	1.625"
MM10716	MM10 Cable Management Rack, 16.25" channel depth, 7', black	88		768	480	336	1536	960	672
MM10816	MM10 Cable Management Rack, 16.25" channel depth, 8', black	88		768	480	336	1536	960	672
MM6706	MM6 Cable Management Rack, 6.5" channel depth, 7', black	34		288	240	156	576	480	312
MM6710	MM6 Cable Management Rack, 10.50" channel depth, 7', black	56		480	288	240	960	576	480
MM6810	MM6 Cable Management Rack, 10.50" channel depth, 8', black	56		480	288	240	960	576	480
MM6716	MM6 Cable Management Rack, 16.25" channel depth, 7', black	88		768	480	336	1536	960	672
MM6816	MM6 Cable Management Rack, 16.25" channel depth, 8', black	88		768	480	336	1536	960	672



designed to be better.™

Ortronics
125 Eugene O'Neill Drive
New London, CT 06320
800.934.5432

© Legrand All Rights Reserved rev.12112



Legrand, North America

60 Woodlawn Street
West Hartford, CT 06110
1.877.BY.LEGRAND (295.3472)
www.legrand.us

570 Applewood Crescent
Vaughan, Ontario L4K 4B4
905.738.9195
www.legrand.ca