

 **netAlly**
simplicity • visibility • collaboration



netally.com

**Network Test, Analysis,
& Cybersecurity Solutions**



Testing you can trust, from a reliable ally.

For decades our family of innovative network test solutions have been helping network engineers and technicians better manage, maintain, and secure today's complex wired and wireless networks.

For more than 30 years, we have been the #1 ally of network professionals worldwide. We began by making the world's first handheld network analyzer – the LANMeter® – and have continued as industry pacesetters ever since, setting the standard for portable network testing and assessment.

When it comes to innovative, reliable, best-in-class portable network testing and edge security solutions, NetAlly is the name to trust. Our leading-edge, highly responsive tools get the job done fast by...

- Simplifying the complexities of network testing and security assessment
- Providing instant visibility for efficient problem solving and vulnerability detection
- Enabling seamless collaboration between site personnel and remote experts



AirMapper™ Ecosystem

COST-EFFECTIVE WI-FI DESIGN, SITE SURVEY & TROUBLESHOOTING SOLUTION

The AirMapper Ecosystem is a suite of interoperable products that speed and simplify wired and Wi-Fi network planning, installation, validation, and troubleshooting.

NetAlly is the first to offer site survey data collection and network discovery in powerful handheld instruments, with complete infrastructure and heat mapping in the Link-Live™ collaboration, reporting, and analysis platform or AirMagnet™ Survey PRO.

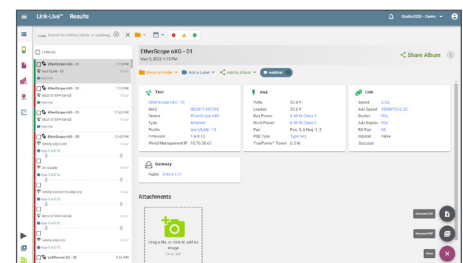
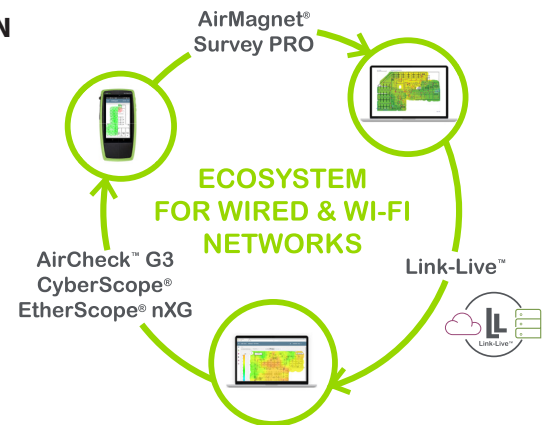
With the AirMapper Ecosystem, your team can design a Wi-Fi network with AirMagnet Survey PRO, quickly perform a validation site survey using the AirMapper app on the AirCheck™ G3, CyberScope®, EtherScope® nXG, and easily collaborate through the use of Link-Live.

WHAT IS LINK-LIVE™?

Maintaining and coordinating a team of professionals to tackle Wi-Fi and wired network installation and management grows more challenging every day.

Available as a free cloud service or licensed private cloud/on-premise deployment, the Link-Live collaboration, reporting, and analysis platform transforms team workflows, allowing IT professionals to quickly and easily log, document, and report test activity from all NetAlly hand-held network testers and analyzers, enabling collaboration across your entire team.

- Available as a free cloud service or Link-Live Private Edition for licensed on premise or private cloud deployment
- Easily unify results, reporting, and data management in a secure cloud portal
- Better manage jobs, improve staff efficiency, and facilitate team collaboration



MODELS: LL-PRVT-G (software download)
LL-PRVT-SUM (annual subscription)

CYBERSCOPE®

EDGE NETWORK VULNERABILITY SCANNER



CyberScope offers comprehensive cyber security risk assessment, analysis, and reporting for the network edge in a single, powerful, portable tool – including network discovery, wireless security, vulnerability assessment, plus segmentation and provisioning validation. It provides fast, actionable insights, filling the critical visibility gaps that other cybersecurity tools frequently do not address.

- Easily validates controls at the edge
- Inventories everything including IoT, OT, unmanaged devices, wired, and wireless
- Quickly tests and demonstrates policy compliance
- Enables collaboration and sharing between teams



MODELS:
CYBERSCOPE-CE
CYBERSCOPE-XRF



MODEL:
CYBERSCOPE-AIR

Cybersecurity Assessment Workflow

Complete visibility. It's what you need but despite all the resources you have, there are still critical gaps. CyberScope can help.

DISCOVER

VALIDATE

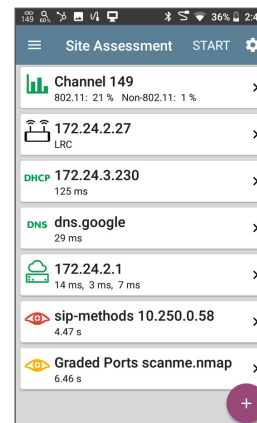
LOCATE

ANALYZE

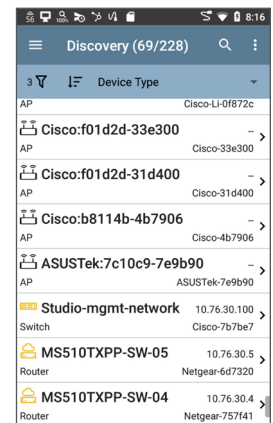
REPORT

MONITOR

NOTE: *CyberScope is available in three different versions. The full function CE version includes wired Ethernet and wireless (Wi-Fi and BT/BLE) capabilities. Wired only (XRF) and wireless only (AIR) models are also available - specific capabilities depend on the version. Refer to the CyberScope online [Model Comparison](#) for details.



Test Policy Compliance



Discovery Device List

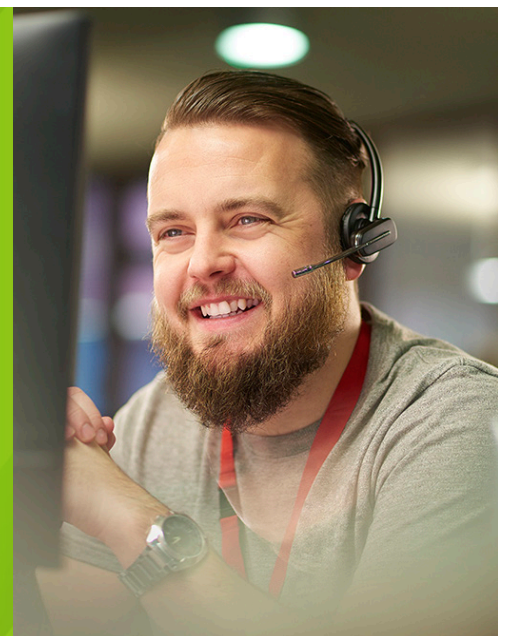
Need support? We're here for you.

NetAlly's Customer Experience & Solutions Center is here to help you solve any product problems you encounter – from the simplest to the most complex. Our goal is to make sure you get the best results using our products and have a superior customer experience.

We're here to:

- Coach you through various aspects of product usage
- Quickly resolve your product issues to minimize downtime
- Serve as your technical advocate, drawing from experts across NetAlly to get you fast answers

Toll-Free (North America) 1-844-878-2559
International +1-719-755-0770



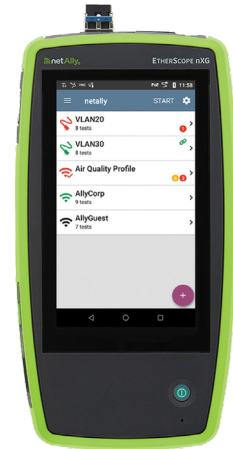
FEATURED PRODUCTS

EtherScope® nXG

PORTABLE NETWORK EXPERT

Deploying and maintaining Wi-Fi 6/6E and wired network infrastructure without the right tools can be daunting... and costly. This multi-technology, all-in-one handheld network analyzer enables engineers and technicians to get more done faster in today's constantly changing Wi-Fi and Ethernet access networks.

- A lightweight, handheld, multi-function instrument that's perfect for remote site validation and troubleshooting
- Eliminate the need to purchase multiple testers or carry a fragile laptop PC or tablet
- Third-party apps make the user's workflow more efficient. Go beyond testing (check trouble tickets, run speed tests, configure networked devices, etc.)
- Optional NXT-1000 spectrum analyzer offers a comprehensive view of RF interference
- Upload discovery data to Link-Live and instantly map your wired and Wi-Fi networks; speeds troubleshooting and keeps network documentation up-to date; exports to Visio



MODELS:

EXG-300 • EXG-300-KIT
EXG-300-KIT-2PK
EXG-300-LR10G2-KIT

AirCheck™ G3

WI-FI 6 WIRELESS ANALYZER

Intuitive user interface delivers actionable intelligence, speeding and simplifying Wi-Fi 6 deployment, troubleshooting, surveying, and validation. AirCheck G3 provides network professionals of any skill level with complete and accurate information to survey and validate Wi-Fi deployments and changes, resolve connectivity and performance problems quickly, speed up closure of trouble tickets and ensure your Wi-Fi network meets end users' needs.

- Native Wi-Fi 6, 2.4/5/6GHz band, and Bluetooth/BLE support
- Validate Wi-Fi 6/6E network performance for critical services and key end devices
- Quickly test, verify, troubleshoot, and map Wi-Fi networks
- Faster and easier Wi-Fi and Bluetooth/BLE site surveys with AirMapper™ Site Survey app
- Quickly find the physical location of Wi-Fi access points and clients on the 2.4GHz, 5GHz, and 6GHz bands



MODELS:

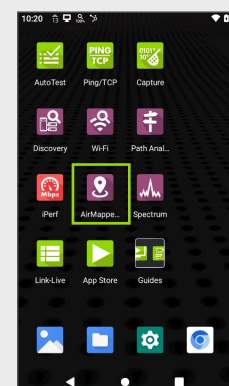
AIRCHECK-G3-PRO
AIRCHECK-G3-PRO-KT
AIRCHECK-G3-PRO-TKT

FEATURED APP

AirMapper™ Site Survey App

The AirMapper Site Survey app for the AirCheck G3, EtherScope nXG and CyberScope lets you quickly and easily gather location-based Wi-Fi measurements and create visual heat maps of key performance metrics in Link-Live™ or AirMagnet® Survey PRO.

- Conduct quick Wi-Fi 6E and Bluetooth/BLE site surveys of new or existing deployments, change validation, and performance verification
- Perform enterprise-grade site surveys without a dongle or tethered device
- View professional SNR and noise measurements
- Gain insights into user experience to avoid performance complaints and costly Wi-Fi network re-design



AirMapper Site Survey App

LinkRunner® 10G

ADVANCED MULTIGIGABIT/10G CABLE & NETWORK TESTER

With network bandwidth demands increasing, gaining visibility into choke points, latency, and packet loss issues is more important than ever. Quickly test, verify, and troubleshoot line-rate 1Gig, Multi-Gig and 10Gig Ethernet with our cost-effective, handheld, multi-function tester.

- Delivers complete network validation, troubleshooting, and documentation; accelerates deployments, and speeds problem identification
- (2) LinkRunner 10G units can be used for LANBERT™ Media Qualification testing or for line-rate bandwidth performance testing to prove network capacity, performance and QoS, as well as service provider SLAs between sites
- AllyCare enables detailed topology mapping, and web remote control
- Line-rate capture up to 10Gbps ensures you never miss a packet for in-depth analysis
- Optional USB Wi-Fi adapter enables basic Wi-Fi visibility through third-party apps, instant upload of test results to Link-Live, and web remote control



MODELS:
LR10G-200 • LR10G-200-KIT
EXG-300-LR10G2-KIT

LinkRunner® AT 4000

ADVANCED ETHERNET TESTER

The LinkRunner AT 4000 is an advanced cable and network tester for Multigigabit NBASE-T and fiber Ethernet networks, including comprehensive network discovery and topology mapping with advanced diagnostics and problem detection for in-depth troubleshooting.

- Provides deep visibility, diagnostics, and packet capture for network technicians and engineers to quickly resolve issues impacting single or multiple devices and network segments.
- Automatically discovers, inventories, and documents network infrastructure devices, endpoints, and connection paths across multiple VLANs and subnets; detects common problems and generates topology maps in Link-Live.
- Comprehensive AutoTest validates and troubleshoots all aspects of network connectivity and services.
- Verifies available link speed from 10Mbps to 10Gbps, tests PoE, identifies connected switch port and VLAN.



MODELS:
LRAT-4000 • LRAT-4000-KIT
LINKSOLUTIONS-KT-4K

LinkRunner® AT 3000

NEXT GENERATION COPPER AND FIBER ETHERNET AUTOTESTER

The LinkRunner AT 3000 is designed for frontline technicians and engineers who need fast and comprehensive validation of network links and powerful copper and fiber network connectivity troubleshooting.

- Enables frontline technicians to quickly and thoroughly validate links, troubleshoot device connectivity, and document moves, adds, and changes.
- Comprehensive AutoTest validates and troubleshoots all aspects of network link connectivity
- Verifies available link speed from 10Mbps to 10Gbps, tests PoE, identifies connected switch port and VLAN.
- Advanced twisted-pair cable and 90W PoE tests, fiber optic link signal strength power measurement and SFP diagnostics.



MODELS:
LRAT-3000 • LRAT-3000-KIT
LINKSOLUTIONS-KT-3K

LinkSprinter®

10-SECOND POCKET NETWORK TESTER

Connectivity issues can be a major source of frustration for end users, putting you in the hot seat. This easy-to-use pocket network tester is ideal for frontline and help desk staff, offering a simple network connectivity test for copper Ethernet links, identifying errors and validating links in less than 10 seconds.

- Reveal network connectivity status and port information, while ensuring documentation for every link
- Measure PoE voltage, perform a switch test, and confirm that the DHCP server is running and responsive through the one-button AutoTest
- View detailed test results on your mobile device over built-in Wi-Fi hotspot
- Test results can be automatically uploaded to the Link-Live reporting and analysis platform improving collaboration between network engineers and frontline technicians



MODELS:
LSPRNTR-300
LSPRNTR-300-5PK
LSPRNTR-300-10PK

Test Accessory

POCKET IPERF SERVER

Validating throughput of your network is essential, and if done proactively can reveal the underlying issues that cause user complaints. Quickly and easily verify performance on any part of your network with our rugged, pocket-sized iPerf server, even when you have limited access to the infrastructure. Conducts some of the same network port tests as LinkSprinter and uploads test results to Link-Live™.

- Easily validate and troubleshoot network performance
- Eliminate the hassle of configuring an iPerf server
- Conveniently powered via PoE or AA batteries



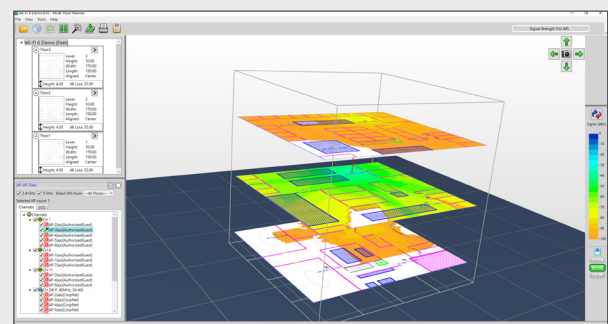
MODELS:
TEST-ACC
TEST-ACC-5PK
TEST-ACC-10PK

AirMagnet® Survey PRO

WIRELESS DESIGN & SITE SURVEY ANALYSIS SOFTWARE

Unreliable techniques for designing and surveying Wi-Fi networks can lead to costly redesigns, user complaints and satisfaction issues. Predictively model Wi-Fi 6/6E network changes or design a new network for optimal coverage, connectivity, and performance with this comprehensive wireless design and site survey analysis software.

- Predictively model Wi-Fi 6/6E network changes or design a new network without physically rolling out APs
- Collect real-world data by performing true end-user experience measurements using AirMapper Site Survey on the AirCheck™ G3, CyberScope®, and EtherScope® nXG
- Generate heatmaps that provide full visibility of WLAN coverage, noise, SNR, interference, throughput, data rates, retries, loss, and more on the 2.4GHz, 5GHz or 6GHz bands
- Save time by performing active and passive surveys in a single walk-through
- Easily customizable templates provide users with flexibility by allowing the creation of various professional reports



MODELS: AM/B4010G • AM/A4012G
AM/A4016G • AM/A4018G

AllyCare Premium Support Services

AllyCare is a comprehensive support and maintenance service for NetAlly’s network tools and AirMagnet® software that offers significant value over standard warranty. By maintaining your AllyCare membership throughout the life of your product you can ensure your NetAlly handheld network tester or AirMagnet software is kept up to date with the latest features and functionality.

AllyCare can be purchased as either a 1-year, 2-year, or a value-added 3-year membership.



MEMBERSHIP BENEFITS*

Support Features	with AllyCare Support	Standard Warranty
Latest Software & Firmware Updates	Yes	90-day manufacturing defects only
Repair Service Covered*	Yes	1-year manufacturing defects only
Accessory Replacements*	Yes	90-day manufacturing defects only
AllyCare-Enabled Product Features (See below)	Yes	No
Exclusive Online Product Tutorials	Yes	No
Priority access to a Customer Experience & Solutions Expert	Warranty support, plus priority product functionality and issue troubleshooting	License, installation, registration, application launch and warranty repairs only

AllyCare-Enabled Product Feature	NetAlly Products	With AllyCare	Without AllyCare
Advanced Survey Heatmaps in Link-Live™ - Get access to additional heatmaps: Noise, SNR, Adjacent Channel Interference, Co-Channel Interference, AP Coverage, Min Basic Rate, Beacon Overhead, Max TX/Rx rates, Max Tx/Rx MCS.	AirCheck® G3 CyberScope® CyberScope® Air EtherScope® nXG	Yes	No
Advanced Heatmap Filters in Link-Live - Get access to additional filtering options: APs, Authorization Class, Band, BSSIDs, Channels, Channel Width, Min Basic Rates, Security, and Type.	AirCheck G3 CyberScope CyberScope Air EtherScope nXG	Yes	No
Cloud-Based Remote Control - Simple and secure remote-control that allows you to connect from Link-Live™ directly to your network-connected AllyCare Enabled Product	AirCheck G3 CyberScope EtherScope nXG LinkRunner® 10G LinkRunner® AT 3000 LinkRunner® AT 4000	Yes	No
Advanced Topology Mapping in Link-Live - Get access to detailed map controls, filtering, and advanced reporting options.	AirCheck G3 CyberScope CyberScope Air CyberScope® XRF EtherScope nXG LinkRunner 10G LinkRunner AT 4000	Yes	No

***AllyCare Restrictions** (See AllyCare Support Services Terms & Conditions for complete coverage and limitations at: www.netally.com/allycare-terms-and-conditions)

- Any product purchased from unauthorized third-parties (e.g., online auction site, end-users, aftermarket users, etc.) will not qualify for nor will receive AllyCare support. Also excluded are products that have been used and then resold.
- Repairs require prior qualification troubleshooting by our Customer Experience & Solutions Center. Damage covered is from normal wear and does not cover accidental product damage or loss. Accessories covered are those included with the original product purchase.
- Products that are sold with 1-year AllyCare Support included have certain features and capabilities enabled. At the end of your existing contract, you must renew your AllyCare Support contract to continue utilizing the enabled features.
- AllyCare membership may not be available in all countries. Please confirm with your NetAlly representative before purchasing.

For more information visit: netally.com/allycare-support

PRODUCT SELECTION GUIDE



Product / Feature	CyberScope ¹	LinkSprinter	Test Accessory	LinkRunner AT 3000	LinkRunner AT 4000	LinkRunner 10G	EtherScope nXG	AirCheck G3	AirMagnet Survey PRO
Ethernet Copper	10/100 Mbps & 1/2.5/5/10 Gbps	10/100/1000 Mbps		10/100/1000 Mbps (detects Multi-Gig and 10 Gbps)		10/100 Mbps & 1/2.5/5/10 Gbps			
Ethernet Fiber	1/10 Gbps			1 Gbps		1/10 Gbps			
PoE Test (up to 90W at PSE, 71.3W at PD)	•	Voltage only		•	•	•	•		
Wiremap & Toner - Cable Open/Short/Length	•			•	•	•	•		
Default Gateway, DNS, IP	Unlimited Targets	1 IP Target	1 IP Target	Unlimited Targets					
Wi-Fi Test/Heatmaps 802.11 a/b/g/n/ac/ax, Bands (2.4, 5, 6GHz)	•						•	•	•
Wi-Fi Connection & Roaming Test	•						•	•	•
Discover SSID, AP, & Clients	•						•	•	•
AirWISE® Intelligence	•						•	•	•
AP & Client Locate	•						•	•	AP Locate Only
RF Traffic Statistics	•						•	•	
AirMapper™ Site Survey ²	•						•	•	•
Bluetooth/BLE Site Survey	•						•	•	
Wi-Fi Spectrum Analysis	Optional NXT-1000						Optional NXT-1000		
Network Topology Mapping ²	•				•	•	•	•	
Network Discovery ²	•				•	•	•	•	
Packet Capture	•				•	•	•	•	
LANBERT™ Media Qualification	•					•	•		
iPerf Performance Test	•		•		•	•	•	•	•
Line Rate Performance Test	10 Gbps					10 Gbps	10 Gbps		
Remote View/Control ²	•			•	•	•	•	•	Windows Apps
Integration of Nmap into AutoTest & Network Discovery	•								
Standalone Nmap App / Custom Script Support	•								
Automated Discovery Monitoring	•								
Option to Disable Functionality*	•			•	•	•	•	•	

¹ The full function CE version includes wired Ethernet and wireless (Wi-Fi and BT/BLE) capabilities. Wired only (XRF) and wireless only (AIR) versions are also available - specific capabilities depend on the version. Refer to the CyberScope online [Model Comparison](#) for details.

² Depending on each product's capabilities, AllyCare enabled features can include AirMapper enhanced site survey visualizations, Network Topology Mapping, Network Discovery, and Remote View/Control ; these features are available to customers with AllyCare support.

*Allows disabling of specific product capabilities for use in secure environments.



Toll-Free (North America) 1-844-878-2559
International +1-719-755-0770

