

Datasheet: LinkWare™ Live

The cloud-based service that lets you manage certification jobs anytime, anywhere, with anyone on any device.

LinkWare Live is designed to increase the efficiency of contractors performing certification of cabling installations. It starts with the Project Manager identifying the links to be tested, the tests be performed and who will perform them. Next, field teams download their test settings to their field gear, label and test the installed links, and upload the results to LinkWare Live. Supervisors can track the progress of each job and receive notifications when unexpected results appear. When the work is done, a single click generates customer-ready reports. LinkWare Live also tracks the location and service status of your fleet of testers. The result is fewer errors, faster reporting, and a boost to the bottom line.



Benefits of LinkWare Live include:

Faster Reporting - Upload test results over Wi-Fi straight from the jobsite to the correct project database. Then generate certification reports with a click.

Teamwork - Divide large projects into smaller subprojects and assign to teams or subcontractors. Share results with customers or vendors. You control who sees what.

Visibility - Get an overview of every project from any smart device. Drill down to each individual test. See unplanned test limits and cable ID's in your results.

Setup Testers and Labelers - Define cable IDs and test settings from your PC or tablet. Then send them to the testers or labelers at the jobsite for mistake-free testing. Supports Brady, Brother, Dymo and Epson.

Asset Management - Track the last used location and monitor the status of all testers to ensure they are always calibrated and running the latest firmware.

[\(Click here for supported countries.\)](#)

Streamlined Testing of SYSTIMAX™ Fiber Solutions - Simply enter a basic link information into the proprietary CommScope Link Loss calculator and it creates custom limits based on link type and measured length.

Take control of your certification jobs

- Track multiple certification jobs to improve scheduling and resource allocation from any smart device
- Include external partners and customers on jobs and share information securely about that job without giving access to your other jobs
- Join the leader in cloud based test management with over 10 million tests uploaded to the cloud. Upload and consolidate test results from remote sites, minimizing time wasted collecting and sorting test results
- Create and manage test setups and cable IDs with browser-based ease. Built-in CommScope SYSTIMAX Link Loss calculator simplifies fiber testing setup.
- Real-time access to test results ensures issues are diagnosed in the early stages of the job, eliminating expensive rework
- Create one-click certification reports in the cloud and quickly share project progress with end customers
- LinkWare Live Asset Management tracks the location and monitors the status of all testers to ensure they are always calibrated and running the latest firmware
- Automated and easy firmware updates in the field ensures testing is done to the latest specification
- Direct integration with [LinkWare™ Cable Test Management Software](#) ensures accurate PDF reports can be created quickly
- Cloud based architecture provides easy access, unmatched scalability and high availability
- Integrates with [compatible labeling solutions](#) to quickly generate accurate labels from the LinkWare Live database

Track certification jobs on your phone

Dashboards in LinkWare™ Live provides insights on the progress of your certification job on your smart phone or any browser enabled device. This ensures your certification jobs and projects are completed on time.

The ability to track multiple jobs simultaneously also improves scheduling and resource allocation to ensure maximum productivity from technicians and instruments. Customization of the dashboard enables you to group multiple projects, matching the way you do business. The ability to archive projects ensures only relevant data is displayed on the dashboard.

Collaborate easily and securely

Include external partners or customers on SubProjects without giving access to the entire project. Personalize your external partners' access to SubProjects by assigning appropriate roles:

Sub Manager

- Select, edit, and manage Test Setups and Cable IDs
- Invite Team Members to Projects
- Generate Summary Certification Reports
- Download results to LinkWare PC

Tech

- SYNC Projects they are invited to.
- Send Results from a tester to LinkWare Live.
- View results for Projects or SubProjects in LinkWare Live.
- Download results to LinkWare PC

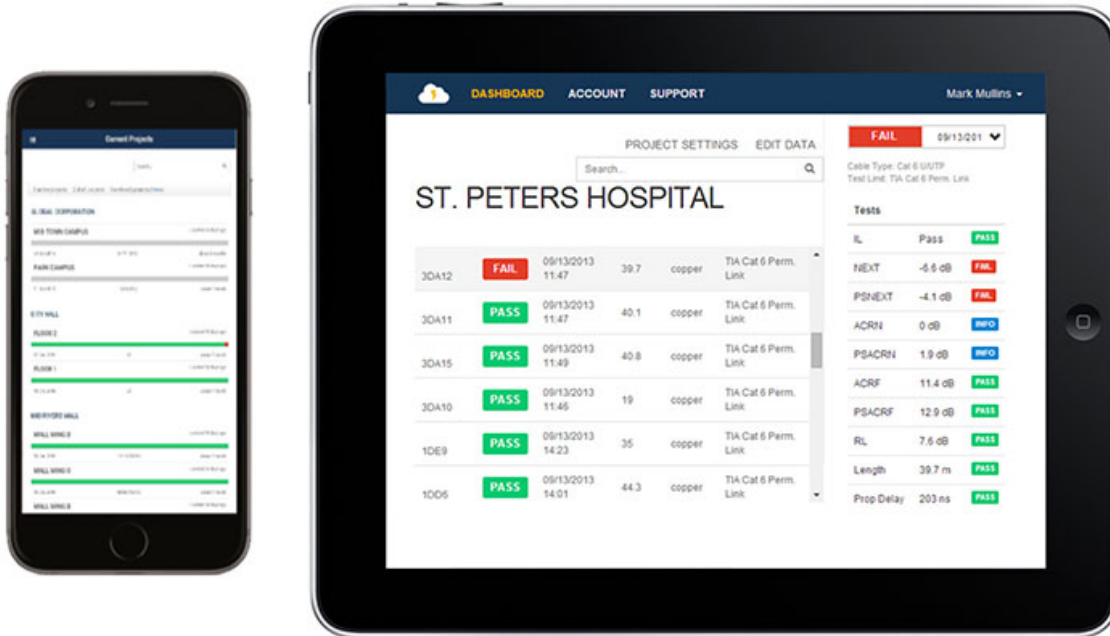
Viewer

- View results for their Projects or SubProjects in LinkWare Live.

Upload test results from remote sites

Test Results Management is made easy with LinkWare Live. This means that you spend more time on tasks that matter, complete jobs faster, and get paid sooner.

The Versiv testers directly integrate with LinkWare Live allowing test results to be uploaded to www.linkwarelive.com. Once the results are stored remotely, you can view them on any internet enabled smart device with a browser anywhere and at any time.



Consolidate test results for large projects

Often you have to use multiple testers for a job and sometimes these testers are on multiple sites. Collecting and consolidating data from each can be time consuming. Now with LinkWare Live, data from different testers and sites can effortlessly be consolidated into a single project. This minimizes retesting due to missing results.

One-click certification reports

Create certification reports from anywhere on any device. Generate a PDF of the certification report from the cloud in one click for faster, more efficient use. LinkWare Live now works with any browser based device so you can use your favorite device to enhance your workflow.

Create Project test setups and cable IDs in the browser

Create project test setups and cable IDs with browser based ease and save them in LinkWare Live. Once saved they can then be download to any tester. Avoid unnecessary travel to the jobsite.

Copper and fiber test setups can be created from any browser. The options available on the browser are the same as those while creating the test setup on the tester. But it's faster to create the project setup on the browser as the number of screens needed has been reduced to just one.

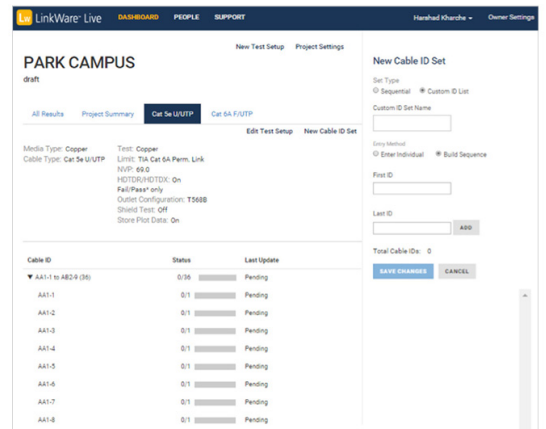
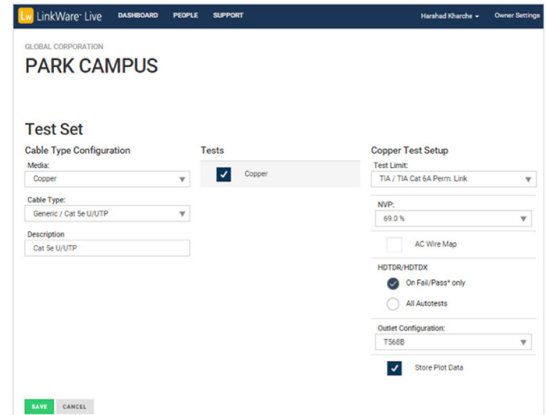
Both sequential and custom ID lists can be created from the browser ensuring cable IDs are generated quickly as defined in the job specification. Cable IDs can also be created in the browser by importing Microsoft Excel or CSV files.

View unplanned test limits and cable IDs

In the results LinkWare Live shows when unplanned test limits or cable IDs are uploaded.

Along with the notification LinkWare Live also provides the capability to accept or reject these test results.

Always ensure tests are following the specification required for the certification job. With LinkWare Live you will catch these errors early in the project timeline, eliminating additional calls to retest.



LinkWare Live DASHBOARD USERS ASSETS HELP Harshad Kharche Live Networks Corp

All Tools (161) Tool Sets (12)

Showing all 161 assets

Status	Product Name	Serial Number	Project	Last Used	Synced By
✓	DSX-PLA004	2465136	DM1	2 months ago	Harshad Kharche
✓	DSX-PLA004	2465135	DM1	2 months ago	Harshad Kharche
✓	Versiv-Main	2385702	DM1	2 months ago	Harshad Kharche
✓	DSX-5000	2960069	DM1	2 months ago	Harshad Kharche
✓	DSX-5000	2972481	DM1	2 months ago	Harshad Kharche
✓	Versiv-Remote	2435005	DM1	2 months ago	Harshad Kharche
✓	Versiv-Main	2385550	Creek High School	4 months ago	Carolyn Carter
⚠	DSX-5000	2405235	Creek High School	4 months ago	Carolyn Carter
✓	DSX-PLA004	2468012	Creek High School	4 months ago	Carolyn Carter
✓	DSX-PLA004	2394040	Creek High School	4 months ago	Carolyn Carter
⚠	DSX-5000	2405231	Creek High School	4 months ago	Carolyn Carter
✓	Versiv-Remote	2378111	Creek High School	4 months ago	Carolyn Carter
✓	DSX-CHA004	2449107	Hawk Stadium	9 months ago	Harshad Kharche
✓	DSX-PLA004	2451068	Hawk Stadium	9 months ago	Harshad Kharche
⚠	DSX-5000	2437139	Hawk Stadium	9 months ago	Harshad Kharche
⚠	DSX-5000	2437360	Hawk Stadium	9 months ago	Harshad Kharche
✓	DSX-CHA004	3055201	Seaway Center	9 months ago	Harshad Kharche
✓	DSX-PLA004	3036035	Seaway Center	9 months ago	Harshad Kharche
✓	DSX-5000	2972483	Seaway Center	9 months ago	Harshad Kharche
✗	Versiv-Remote	2925026	Seaway Center	9 months ago	Harshad Kharche
✗	Versiv-Main	2985632	Seaway Center	9 months ago	Harshad Kharche
✓	DSX-PLA004	2451063	MID RIVERS MALL	9 months ago	Harshad Kharche

2437139
DSX-5000

Last Location: Hawk Stadium

Project: Hawk Stadium

Synced By: Harshad Kharche

Calibration Date: 03/27/2014
⚠ Past recommended calibration date of 03/27/2015

Last used with:

Product Name	Serial Number
Versiv-Main	2385702
DSX-5000	2437360

System Status | Privacy Policy | Terms of Use | About Us

Asset Management

LinkWare Live asset management provides an intuitive way to monitor testers in the field. Any user with the permission to view asset information can quickly identify the last used location of the tester and verify on who is using the tester.

LinkWare Live informs you 60 days in advance if any tester needs to be calibrated. It also provides notification on the firmware version of each tester. Testers that need to be updated can be updated remotely, ensuring your Versiv has all the latest features.

LinkWare Live Asset Management dramatically reduces the amount of time spent locating and managing testers in the field and ensures your team is always ready for the job.

Create a summary certification report for each certification job directly from the browser so end customers can quickly be updated about project progress.

Integration with Leading Labeling Solutions

The world's leading providers of labeling solutions work with LinkWare Live to make labeling faster, simpler, and error-free. By accessing label identifiers stored in LinkWare Live, these solutions remove the tedious step of re-entering long strings into the labelers.

For a complete list of compatible products, how they work with LinkWare Live and availability, please visit: www.flukenetworks.com/linkwarelive/linkware-live-integrations.

LinkWare PC Cable Test Management Software

Linkware™ PC Cable Test Results Management Software is the reporting engine for LinkWare Live. LinkWare PC connects to LinkWare Live and allows you to easily download uploaded results and to perform targeted analysis.

Reports created from LinkWare are the industry de-facto standard and are recommended by leading cabling manufacturers, consultants, and industry experts.



LinkWare Live Compatibility

LinkWare Live is compatible with the following Fluke Networks products:

- **DSX CableAnalyzer™ Series**
- **OptiFiber® Pro OTDR**
- **CertiFiber® Pro Optical Loss Test Set**
- **FI-7000 FiberInspector™ Pro**



LinkWare Live Plans

Which license is right for you? LinkWare Live Professional is focused on improving productivity for the project manager with greater control on project setups and notifications.

Looking for a solution for only test results management? Choose LinkWare Live Essentials

LinkWare Live Essentials	LinkWare Live Professional
✓ Upload Test Results	✓ LinkWare Live Essentials
✓ Project Dashboards	✓ Test Setup Creation and Distribution
✓ Results Analysis and Troubleshooting	✓ Real Time test setup correction/update
✓ Summary Certification Report	✓ Notifications for tests run with wrong limits and cable IDs
	✓ Asset Location and Usage*
	✓ Asset Status*

*See supported countries at: www.flukenetworks.com/LinkWareLive/countries.