



# exacqVision®

Cross Platform IP Video Surveillance Solutions

VMS Software for Commercial Off-The-Shelf Servers

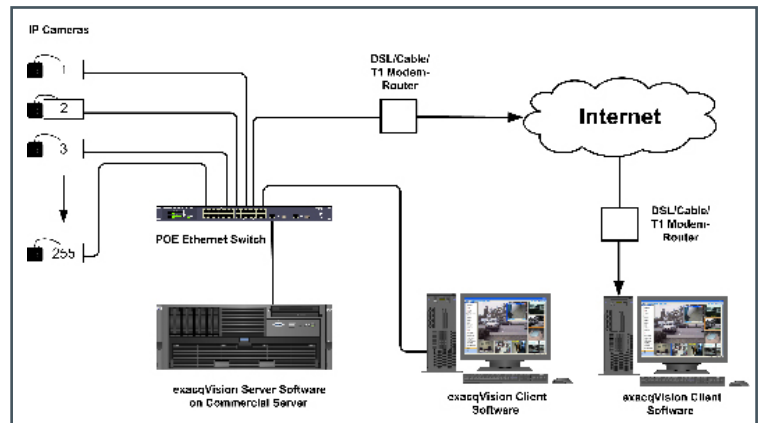
exacqVision  
start

exacqVision  
professional

exacqVision  
enterprise

## Product Description:

The exacqVision® VMS (Video Management System) software installs on commercial off-the-shelf (COTS) servers running Windows or Linux operating systems to create an advanced security solution, providing recording of the latest, state-of-the-art IP video surveillance cameras. The exacqVision VMS is available in three different tiers: Start, Professional ("Pro") and the Enterprise Server option. The powerful, yet easy-to-operate client user interface installs on any standard computer running Windows, Linux or Mac OS X and easily connects to multiple exacqVision servers including Hybrid servers (analog and IP cameras) and IP Camera servers manufactured by exacq technologies.



## Features:

- Each server is expandable to up to 255 IP cameras (dependent on hardware, data and camera settings)
- Simple and cost-effective to add additional IP camera licenses
- Supports the industry's latest IP cameras and encoders from multiple manufacturers
- Digital PTZ functionality on all cameras in live and recorded mode
- Intuitive user interface requires little to no training
- Included common client connects to multiple exacqVision servers to create scalable networks
- Easy-to-use, powerful video and audio export features
- Multi-monitor client display. Drag and drop cameras between monitors
- Graphical search display for all cameras and recorded audio
- Easy to use multi-camera playback and export
- Definable user permissions and privileges
- Access video via free mobile apps for iPhone/iPad and Android devices or web browser on any internet-enabled device
- Wide-screen client views
- SmartSearch



IP Cameras



Access Control



Video Analytics



The latest Network Integration Partner list is available at [www.exacq.com/support/ipcameras.html](http://www.exacq.com/support/ipcameras.html)

SOFTWARE FEATURES		exacqVision start	exacqVision professional	exacqVision enterprise
System	Server OS Compatibility	Windows/Linux	Windows/Linux	Windows/Linux
	Free Client Software	Windows/Linux/Mac	Windows/Linux/Mac	Windows/Linux/Mac
	Supported Browsers	IE, Chrome, Safari, Opera, Firefox	IE, Chrome, Safari, Opera, Firefox	IE, Chrome, Safari, Opera, Firefox
	Max IP Cameras Per Server (on exacqVision hardware)	16 (limited on exacqVision and COTS servers)	64	128
	Max Server Connections Per Client	1	512 (thick client) / 16 (web client)	512 (thick client) / 16 (web client)
	Bandwidth Throttling	Yes	Yes	Yes
	Pre-Post Alarm Recording	Yes	Yes	Yes
	Panoramic Lens Support	Yes	Yes	Yes
	Video Expiration	Max retention, global	Min/Max retention by camera	Min/Max retention by camera
	iSCSI support		Yes	Yes
	Time-Lapse Recording		Yes	Yes
	Client Joystick Configuration		Yes	Yes
	Soft Triggers		Yes	Yes
	Audit Trail		Yes	Yes
	Custom User Groups		Yes	Yes
Live View	3rd Party Integrations	Command Line	Yes	Yes
	Fish-eye / Panoramic Support (Live & Recorded)	Yes	Yes	Yes
	PTZ Control & Presets	Yes	Yes	Yes
	Digital PTZ Control & Presets	Yes	Yes	Yes
	Multi-Monitor & Video Wall	Yes	Yes	Yes
	Event Linking	Discrete Inputs Only	Yes	Yes
	Event-Driven Video Switching		Yes	Yes
	Camera Groups		Yes	Yes
	Event Notifications		Yes	Yes
	Maps		Single-layer	Multi-layer
Playback & Search	Multi-Camera Playback	Yes	Yes	Yes
	Simultaneous Video Export	1 Channel	16 Channels	16 Channels
	Graphic Search Display	Yes	Yes	Yes
	Event Search	Yes	Yes	Yes
	POS & ATM Serial Text Search	Yes	Yes	Yes
	DVD Export	Yes	Yes	Yes
	exacqReplay Instant Replay	Yes	Yes	Yes
Enterprise	Smart Search		Yes	Yes
	Enterprise Cameras			Yes
	Enterprise Server Monitoring			Yes
	Enterprise User Setup			Yes
	LDAP / Active Directory			Yes
	Health Monitoring		E-mail	Enterprise Health Monitor option / email
Updates	Software Updates Included	1 Year	1 Year	1 Year
	Software Updates Included (3rd Party Servers)	90 Days	1 Year	1 Year
	Upgradeable to Next Tier	Yes	Yes	

### VMS SERVER HARDWARE RECOMMENDATIONS

Processor: Intel® Dual Core® Pentium E2160, 1.8 GHz or greater  
 Graphics: 1280 x 1024 x 32 bits  
 RAM: 1 GB  
 NIC: 10/100/1000BASE-T Ethernet  
 Hard Disk: Western Digital Enterprise Drives, WD RE2 SATA (or) Seagate Barracuda ES.2 SATA  
 30 GB reserved for OS and VMS server software  
 Operating Systems: Windows 7, Server 2008; Linux Ubuntu 10.04

### MOBILE ACCESS:

WEB BROWSERS: Windows Explorer, Firefox, Apple Safari, Opera, Chrome  
 APPS: iPhone, iPad, iPod Touch, Android Devices

### CLIENT WORKSTATION RECOMMENDATIONS - MAC

Processor: Intel® 1.83 GHz Core Duo or greater  
 Graphics: 1024 x 768 x 32 bits  
 RAM: 1GB  
 NIC: 10/100/1000BASE-T Ethernet  
 Hard Disk: 80 GB Serial ATA drive  
 OS: Mac OS X

### CLIENT WORKSTATION RECOMMENDATIONS - WIN/LINUX

Processor: Intel® Celeron® Processor 420 at 1.6 GHz or greater  
 Graphics: 1280 x 1024 x 32 bits  
 RAM: 1GB  
 NIC: 10/100/1000BASE-T Ethernet  
 Hard Disk: 80 GB Serial ATA drive  
 Operating Systems: Windows 7, Server 2008, Vista, XP; Linux Ubuntu 10.0