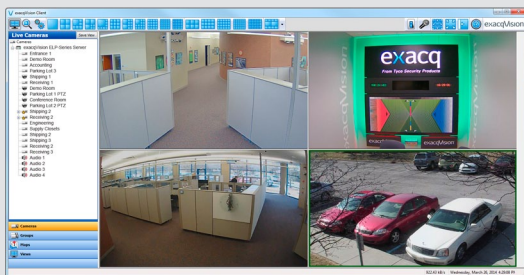
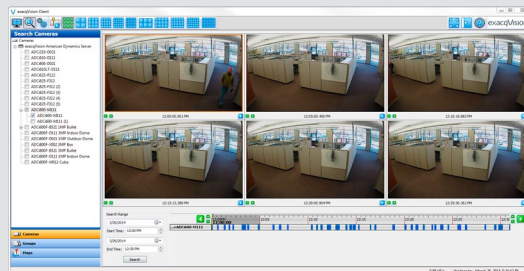


exacqVision ELP-Series Hybrid Server Complete Network Video Recording Solution



Pre-Loaded with exacqVision Professional VMS



Powerful search tools for finding video evidence



Free Exacq Mobile app

• Up to 40 Cameras Per Server

- Continuously record up to 200 Mbps of video, audio and data
- Available with 8 or 16 analog inputs
- Includes 4 IP camera licenses, expandable to 24 per server
- Compatible with over 1,800 IP cameras

• Unlimited Scalability

- Add unlimited servers for greater capacity or dispersed geographic location
- Easily expand license to record additional high definition IP cameras
- Easily manage multiple NVRs from a single, unified client

• High Reliability

- Store up to 8 TB storage per server using continuous duty enterprise-class hard drives
- Linux operating system pre-installed on a solid-state drive
- Monitor hardware status with the freely distributed exacqVision client

• Powerful exacqVision Professional VMS Software

- Monitor video, audio and data in real time
 - Customizable full-screen video wall
 - Two-way audio
 - Interactive camera maps
 - Data integration from retail systems, access control and more
 - Onscreen display of motion, analytics and alarm events with configurable response
- Conduct Investigations on recorded video, audio and data
 - Search across multiple video and archive servers seamlessly
 - Powerful thumbnail and timeline search tools
 - Export video in open-standard video formats or as a self-contained player with tamper protection

• View Video From Anywhere

- Pre-loaded with exacqVision VMS software for immediate use
- View video and manage servers on multiple
- View live and recorded video on any browser, iOS, Android or Windows Phone 8 mobile device

• 3-Year Hardware Warranty and Software Subscription Agreement (SSA)

- 3-year hardware warranty and SSA included.
- Update client and server software with the latest exacqVision software features at no additional cost during the 3-year SSA period.

ANALOG	ELP	ELPR
Inputs	8/16	8/16
Compression	H.264, MJPEG	H.264, MJPEG
Frame Rate	240/480 (NTSC), 200/400 (PAL)	240/480 (NTSC), 200/400 (PAL)
Alarm Inputs	4 TTL	4 TTL
Alarm Outputs	2 TTL, 1 Relay	2 TTL, 1 Relay
Analog Outputs	1	1
Audio Inputs	4	4
IP		
Maximum IP Cameras	24	24
Included IP Licenses	4	4
SERVER FEATURES		
Pre-Loaded VMS Software	exacqVision Professional, exacqVision Enterprise (optional)	exacqVision Professional, exacqVision Enterprise (optional)
Typical Video Storage Rate	200 Mbps	200 Mbps
Local Client Display Rate	180 FPS	180 FPS
Maximum Hard Drives	1	2 removable
Maximum Storage	4 TB	8 TB
Monitor Output	1 DVI-I + 1 DVI-I + 1 Display Port, maximum 2 simultaneous monitors	
Operating System	Linux Ubuntu 10.04	
Operating System Drive	32 GB SSD	32 GB SSD
CPU	Intel Celeron	Intel Celeron
RAM	2 GB	2 GB
NIC	2 x 1 Gbps	2 x 1 Gbps
USB Ports	6 x USB 2.0, 2 x USB 3.0	6 x USB 2.0, 2 x USB 3.0
DVD	Included	Optional
Serial	1	1
Audio Outputs	1	1
Audio Inputs	4	4
Keyboard & Mouse	Included	Included
GENERAL FEATURES		
Dimensions (lxwxh)	2.575 x 17 x 18.9 in 6.54 x 43.18 x 48 cm	2.575 x 17 x 18.9 in 6.54 x 43.18 x 48 cm
Weight	22 - 25 lbs. 10 - 11.3 kg	22 - 25 lbs.10 - 11.3 kg
Regulatory	CE (Class A), FCC (Class A), UL-Listed	
Input Voltage	120/240 VAC auto-sensing	
Power & Heat	130 Watts/460 BTU/h (max) 100 Watts/350 BTU/h (typical)	130 Watts/460 BTU/h (Max) 100 Watts/350 BTU/h (Typical)
Power Supply	Single	Single
Operating Temperature	40° – 95°F (4.5° – 35°C)	
Warranty	3 years, parts & labor plus 3 years SSA included	
Server Revision	A1	A1

Related Products



exacqVision VMS Software

Approvals



www.exacq.com