

Rack PDU G4

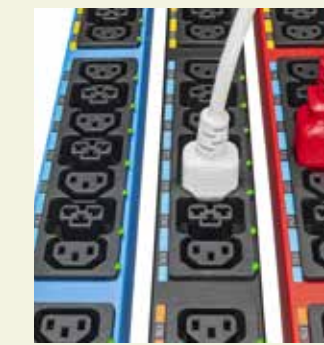
eaton.com/RackPDUg4

Zero interference to 19" rail work space

Extra flat breakers and low-profile form factor chassis to avoid accidental tripping.

Natural load balancing

The G4 design alternates phase and/or breaker per section on all PDUs, naturally balancing rack power load.



Built-in high retention system secures standard power cords to outlets.

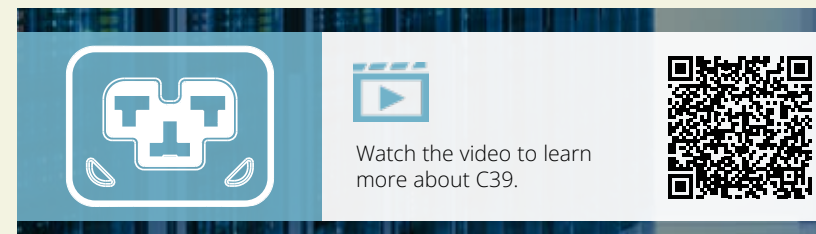


True mounting flexibility
Factory-mounted buttons combined with universal mounting brackets enable Eaton rack PDU G4 to fit any rack on the market.



C39 combining C13 and C19 in a single outlet,

that securely connect both C14 and C20 power cords. Including visual Led power status.



Remotely manage servers

Enhance your power distribution with individual outlet remote control for streamlined energy monitoring and management.



New G4 control module

Boost uptime and enhance service capability with the hot-swap capability of network management and control module. Keep your servers up and running while replacing faulty NMC module.



Dual Gigabit ethernet ports offer the flexibility to define different user profiles and access levels in colocation data centres.

RNDIS provides an easy way to connect a laptop to the PDU via USB directly (plug & play) to access the PDU configuration during commissioning

HD LCD Screen

Enhanced user experience during installation/commissioning, thanks to the new high definition, wide-angle colored view display.



Eaton
EMEA Headquarters
Route de la Longeraie 7
1110 Morges, Switzerland
Eaton.eu

© 2023 Eaton
All Rights Reserved
December 2023

Eaton is a registered trademark.

All other trademarks are property of their respective owners.

Follow us on social media to get the latest product and support information.



Rack PDU G4
eaton.com/RackPDUg4

Explore additional resources and tools to help you find the perfect solution for your unique IT needs.

Rack PDU G4

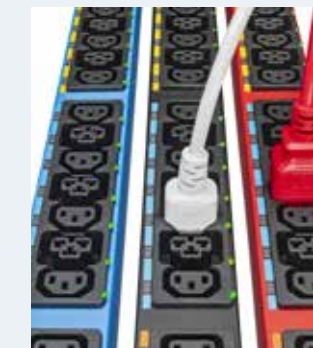
eaton.com/RackPDUg4

Zero interference to 19" rail work space

Extra flat breakers and low-profile form factor chassis to avoid accidental tripping.

Natural load balancing

The G4 design alternates phase and/or breaker per section on all PDUs, naturally balancing rack power load.



Built-in high retention system secures standard power cords to outlets.

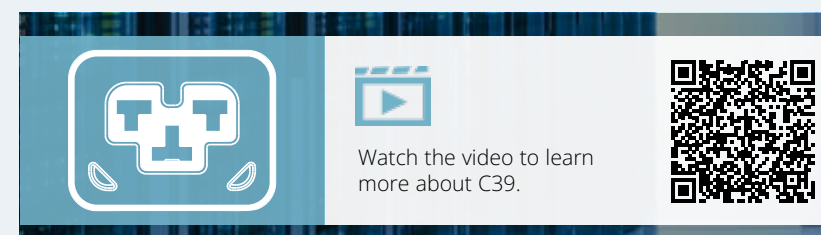


True mounting flexibility
Factory-mounted buttons combined with universal mounting brackets enable Eaton rack PDU G4 to fit any rack on the market.



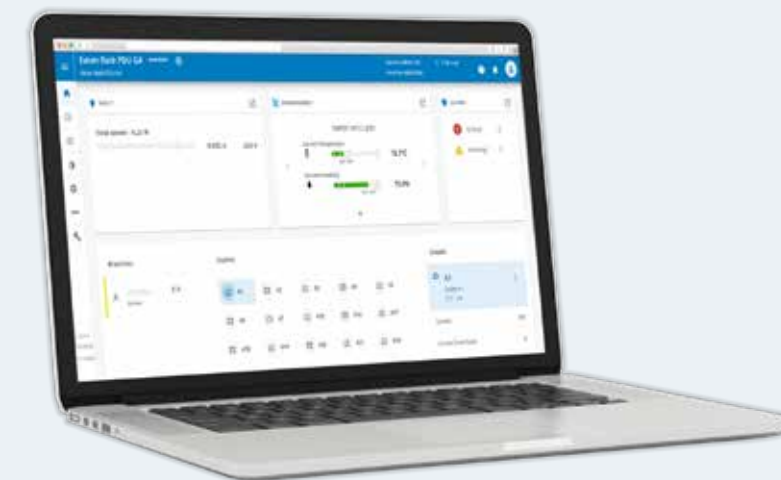
C39 combining C13 and C19 in a single outlet,

that securely connect both C14 and C20 power cords. Including visual Led power status.



Remotely manage servers

Enhance your power distribution with individual outlet remote control for streamlined energy monitoring and management.



New G4 control module

Boost uptime and enhance service capability with the hot-swap capability of network management and control module. Keep your servers up and running while replacing faulty NMC module.



Dual Gigabit ethernet ports offer the flexibility to define different user profiles and access levels in colocation data centres.

RNDIS provides an easy way to connect a laptop to the PDU via USB directly (plug & play) to access the PDU configuration during commissioning

HD LCD Screen

Enhanced user experience during installation/commissioning, thanks to the new high definition, wide-angle colored view display.



Eaton
EMEA Headquarters
Route de la Longeraie 7
1110 Morges, Switzerland
Eaton.eu

© 2023 Eaton
All Rights Reserved
December 2023

Eaton is a registered trademark.

All other trademarks are property of their respective owners.

Follow us on social media to get the latest product and support information.



Rack PDU G4
eaton.com/RackPDUg4

Explore additional resources and tools to help you find the perfect solution for your unique IT needs.