

An aerial photograph of a city skyline, likely Atlanta, Georgia, featuring several prominent skyscrapers and a dense forest of green trees in the foreground. A semi-transparent blue rectangular box is overlaid on the left side of the image, containing the word 'CORNING' in white, uppercase, sans-serif font.

CORNING

2019 Core Products

Local Area Network and Data Center



Contents

Fiber Closures	3
SD-LAN/Small Cell	4
Corning® RocketRibbon™ Extreme Density Cable	5
Local Area Networks	6
Data Centers	16
See the Light® Fiber Optic Training	29
Member Programs	30
Authorized Distributors	31
Technology Alliances	32
Technical Support	33
Resources	34

EVOLVE YOUR NETWORK.

TRANSFORM THE WORLD.

Specifying, purchasing, and installing your local area network (LAN) or data center has never been easier. To reduce the time and effort you spend on your end-to-end optical infrastructure, we've provided at-a-glance ordering information for our most popular products. These modular components are stocked by our authorized distributors for the fastest lead times.

Also included on the following pages is information about our newest products for 2019 and a summary of the innovative resources we've created to help save you time and money – because products are only part of what it takes to build a reliable, future-ready in-building network.

We've added new closures for your expanding network.

Corning Fiber Optic Splice Closures

Whether you manage an aerial or below-grade network, Corning has you covered with a wide variety of splice closures. We have recently expanded our fiber optic closure offering with the addition of the 2178 and SLiC® product families, which offer multiple configurations, scalability and application versatility.

With the most extensive fiber closure portfolio deployed worldwide, Corning is a proven choice for your next installation.

To learn more about Corning's complete line of fiber optics closures, visit [corning.com/fiber closures](https://www.corning.com/fiber closures)



Corning® SLiC® Fiber Optic Closures



Corning Fiber Optic Closures 2178

Highly scalable, flexible networking.

Software-Defined Local Area Network (SD-LAN)

Our new SD-LAN portfolio provides a truly adaptable, scalable, and intelligent software-defined technology that decouples hardware and software layers, centralizing network management with flexible topology options to reduce upgrade costs.

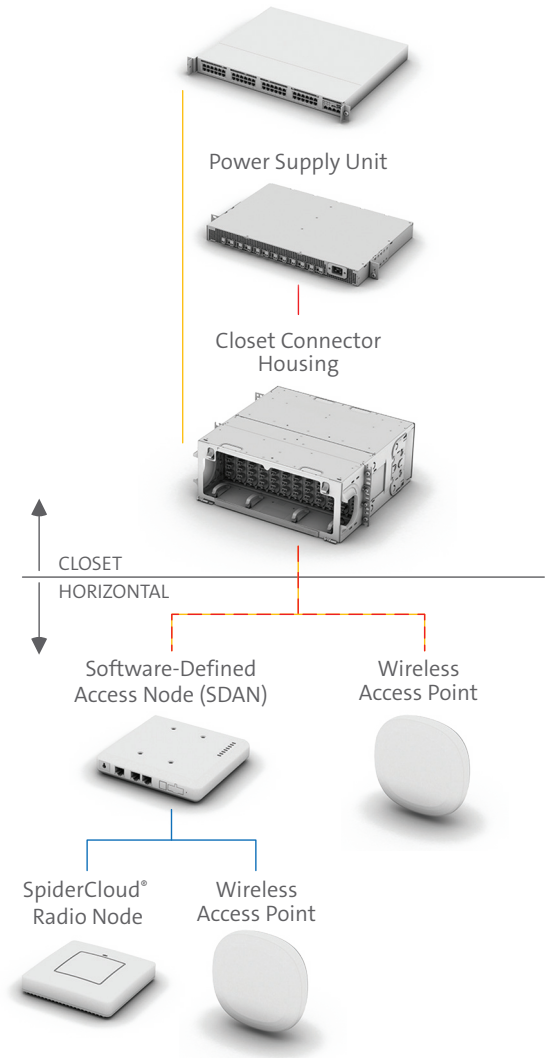
The platform is technology-neutral, supporting active Ethernet deep into the network and passive optical LAN over a software-defined network architecture.

Enterprise-Ready, Small Cell Solutions

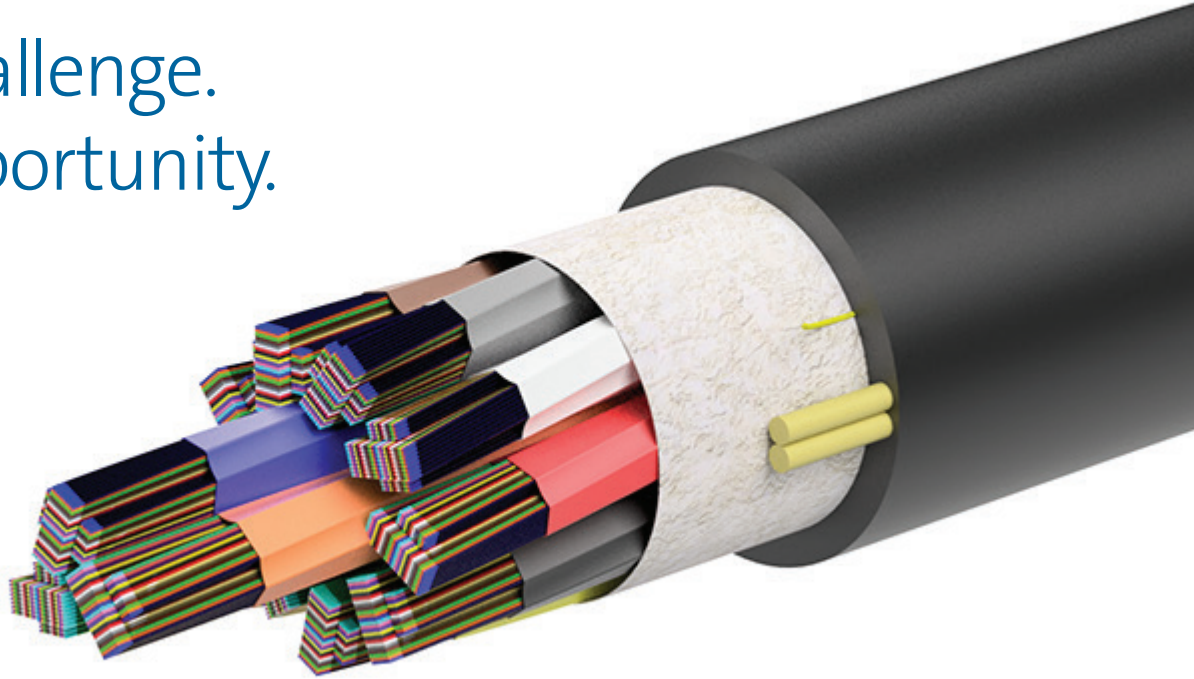
For enterprises looking to control their own cellular coverage and capacity, Corning small cell solutions deliver a high-capacity cellular signal that can cover a single building, distributed facilities, or a campus environment. Our small cell solutions are now available to any enterprise unsatisfied with its cellular service and are backed by a mobile-operator-approved implementation process and support resources.

Explore Corning Small Cell and SD-LAN solutions at corning.com/flexibility

Software-Defined Data Plane (SDDP)



You say challenge.
We say opportunity.



Corning® RocketRibbon™ Extreme-Density Cables

Can your network support emerging 5G technology, where high-fiber availability is critical? We created RocketRibbon extreme-density cables, designed for data center and telecom applications, to help meet your network-performance challenges.

Experience industry-leading density from a cable that is also easy to manage, identify, and trace. And suddenly, your network challenges may feel more like opportunities.

Corning Optical Communications

Are you future-ready?

Visit corning.com/rocketribbon to learn more about our cabling solution for emerging network requirements.

LAN and DC Core Products | LAN-1273-AEN | 5

Local Area Networks

Transmission Performance

OM1

62.5 μm multimode fiber

OM3

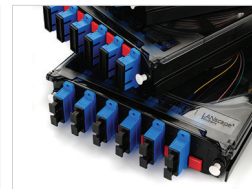
50 μm multimode fiber

OM4

50 μm multimode fiber

OS2

Single-mode fiber



For every part of your optical network, we provide cable, connectivity, hardware, accessories, and the expertise to bring it all together.

Don't see what you're looking for?

Visit our online product catalog at corning.com/opcomm for product information that's easy to find, download, or print as needed.

Transmission Performance

	OM1	OM3	OM4	OS2
Optical Fiber Type	62.5 μ m Multimode	50 μ m Multimode	50 μ m Multimode	Single-Mode
Wavelength (nm)	850/1300	850/1300	850/1300	1310/1550
Maximum Loose Tube Attenuation (dB/km)	3.4/1.0	3.0/1.0	3.0/1.0	0.4/0.3
Maximum Tight-Buffered Cabled Attenuation (dB/km)	2.8/1.0	2.8/1.0*	2.8/1.0*	0.65/0.5
Minimum Overfilled Launch Bandwidth (MHz•km)	200/500	1500/500	3500/500	- / -
Minimum Effective Modal Bandwidth (MHz•km)	2200 / -	2000 / -	4700 / -	- / -

	OM1	OM3	OM4	OS2
1 Gigabit Ethernet Distance (m)	300/550	1000/600	1000/600	5000 / -
10 Gigabit Ethernet Distance (m)	33 / -	300 / -	550 / - [†]	10000/40000
40 Gigabit Ethernet Distance (m)	- / -	100 / -	150 / -	10000 (40GBASE-LR4)
100 Gigabit Ethernet Distance (m)	- / -	100 / -	150 / -	10000 (100GBASE-LR4) 40000 (100GBASE-ER4)

*FREEDM® LST™ cable attenuation is 3.0/1.0.

[†]IEEE 802.3 specifies a maximum distance of 400 m for 10GBASE-SR transmission. 550 m is considered an acceptable engineered-length distance utilizing a complete Corning solution.

OM1 (62.5 μm Multimode Fiber) Cables

Indoor Cable							
MIC® Cable (Non-Armored)		MIC DX Armored Cable (Nonmetallic)		MIC Interlocking Armored Cable (Metallic)		2.0-mm Zipcord Cable	
Riser	Plenum	Plenum		Riser	Plenum	Riser	Plenum
006K81-31130-24	006K88-31130-29	006K88-31130-D3		006K81-31130-A1	006K88-31130-A3	002K51-31330-24	002K58-31330-24
012K81-33130-24	012K88-33130-29	012K88-33130-D3		012K81-33130-A1	012K88-33130-A3		
024K81-33130-24	024K88-33130-29	024K88-33130-D3		024K81-33130-A1	024K88-33130-A3		

Indoor/Outdoor Cable						Outdoor Cable	
FREEDM® One Cable		FREEDM LST™ Cable		FREEDM Loose Tube Cable		ALTOS® Cable with FastAccess® Technology	
Riser	Plenum	Riser	Plenum	Riser	Plenum		
024K8F-31130-29	024K8P-31130-29	006KSF-T4130D20	006KSP-T4130D20	024KUF-T4130D20	024KWP-T4130D20	OSP	
048K8F-61130-29	048K8P-61130-29	012KSF-T4130D20	012KSP-T4130D20	048KUF-T4130D20	048KWP-T4130D20	024KU4-T4730D20	
072K8F-T3130-29	072K8P-T3130-29	024KSF-T4130D20		072KUF-T4130D20	072KWP-T4130D20	048KU4-T4730D20	
096K8F-Y3130-29	096K8P-Y3130-29					072KU4-T4730D20	
144K8F-Y3130-29	144K8P-Y3130-29						

Panels/Cassettes

Standard Panels				Pigtailed Cassettes*			
Fiber Count	LC	SC Duplex	ST® Compatible	Fiber Count	LC	SC Duplex	ST Compatible
6	CCH-CP06-A8	CCH-CP06-91	CCH-CP06-15T	6	Available†	Available†	Available†
12	CCH-CP12-A8	CCH-CP12-91	CCH-CP12-15T	12	Available†	Available†	Available†
24	CCH-CP24-A8			24	Available†		

*Pigtailed cassettes for CCH, SCH, and WCH hardware. †Available with lead time. Refer to LAN-1129-EN.

Hardware

Rack-Mountable Hardware	
CCH-01U	Closet Connector Housing, 1U, accepts up to two CCH panels or cassettes
CCH-02U	Closet Connector Housing, 2U, accepts up to four CCH panels or cassettes
CCH-03U	Closet Connector Housing, 3U, accepts up to six CCH panels or cassettes
CCH-04U	Closet Connector Housing, 4U, accepts up to 12 CCH panels or cassettes

Connectors

Termination	Performance	LC	SC	ST Compatible
UniCam® Connectors	High Performance (0.5 dB maximum)	95-000-99*	95-000-41*	95-000-51*
	Standard Performance (0.75 dB maximum)		95-000-40*	95-000-50
Anaerobic Connectors	Standard Performance	95-101-98-SP*	95-101-41-SP*	95-101-52-SP

*Add "-Z" to UniCam connector part number for 25/pack organizer pack (i.e. 95-000-99-Z). Includes boots for 900 μm only.

Toolkits

Toolkits	
UniCam™ High-Performance Toolkit 2	TKT-UNICAM-PFC2
UniCam High-Performance Toolkit	TKT-UNICAM-PFC
UniCam Standard-Performance Toolkit	TKT-UNICAM
Anaerobic Toolkit	TKT-ANAEROBIC2
Anaerobic Consumables	TKT-ANAEROBIC2-C

OM1 (62.5 μm Multimode Fiber)

Hardware

Wall-Mountable Hardware		Hardware Accessories			
SCH-01C	Single-Cassette Housing, holds one CCH cassette	SPH-DIN-KIT	DIN Rail Mounting Kit for SPH		
SPH-01P	Single-Panel Housing, holds one CCH connector panel	ICH-SPLC-2	Splice Tray Holder for ICH-02P		
WCH-02P	Wall-Mountable Connector Housing, holds two CCH connector panels or cassettes	ICH-SPLC-6	Splice Tray Holder for ICH-06P		
WCH-04P	Wall-Mountable Connector Housing, holds four CCH connector panels or cassettes	CCHA-LOCK-KIT	Hardware Lock Kit for CCH and WCH housings only		
WCH-06P	Wall-Mountable Connector Housing, holds six CCH connector panels or cassettes	HDWR-LOCK-KIT	Hardware Lock Kit for LANscape® hardware (not CCH or WCH)		
EDC-02P-NH*	Environmental Distribution Center, holds two CCH connector panels, NEMA 4X	HDWR-GRND-KIT	Hardware Grounding Kit for LANscape hardware		
EDC-06P-NH*	Environmental Distribution Center, holds six CCH connector panels, NEMA 4X	Cassettes/Splice Trays			
EDC-12P-NH*	Environmental Distribution Center, holds 12 CCH connector panels, NEMA 4X				
ICH-02P	Industrial Connector Housing, holds two CCH connector panels, NEMA 3S			CCH-CS	Splice Cassette, holds one CCH connector panel and up to 24 heat-shrink fusion splices
ICH-06P	Industrial Connector Housing, holds six CCH connector panels, NEMA 3S			CCH-CF	Termination Cassette, holds one CCH connector panel and up to 24 field terminations
ICH-12P	Industrial Connector Housing, holds 12 CCH connector panels, NEMA 3S			M67-048	Splice Tray, holds 12 heat-shrink fusion splices, for LANscape splice closures
				M67-076	Splice Tray, holds 12 heat-shrink fusion splices, for LANscape rack-mountable housings
				M67-110	Splice Tray, holds 12 heat-shrink fusion splices, for LANscape wall-mountable housings

*EDC also available for order in stainless steel.

Additional Products

2-Fiber Jumpers, Riser (3 m length)		Fan-Out Kits		Consumables			
050502K5120003M	LC Duplex to LC Duplex	FAN-BT25-06	Buffer Tube Fan-Out Kit, indoor, six fibers, 25-in legs, for use in temperature-controlled environments only	FCC-WIPES	Fiber Optic Wipes		
575702K5120003M	SC Duplex to SC Duplex	FAN-BT25-12	Buffer Tube Fan-Out Kit, indoor, 12 fibers, 25-in legs, for use in temperature-controlled environments only	FCC-CLEANER-FIBER	Fiber Optic Cleaning Fluid		
505002K5120003M	ST® Compatible to ST Compatible	FAN-OD25-06	Buffer Tube Fan-Out Kit, outdoor, six fibers, 25-in legs, for use in all applications	CLEANER-PORT-LC	Single-Fiber Port Cleaner, LC and keyed LC		
055702K5120003M	LC Duplex to SC Duplex	FAN-OD25-12	Buffer Tube Fan-Out Kit, outdoor, 12 fibers, 25-in legs, for use in all applications	CLEANER-PORT-2.5	Single-Fiber Port Cleaner, SC and ST compatible		
505702K5120003M	ST Compatible to SC Duplex	Accessories for SLiC Closures		2806031-01	Heat-Shrink Fusion Splice Protectors, single-fiber, 60-mm long, Qty 50		
Splice Closures				2527	Fiber Optic Splice Tray, compatible with 24 single-fusion or 144 mass-fusion splices	Test Equipment	
				SLIC-AC-HB2	Extended Hanger Bracket		
2178-S-2172	Fiber Optic Splice Case 2178-S, 96 single-fusion/288 mass-fusion capacity	Accessories for 2178 Closures		CHECKPOINT PRO	Fiber Traffic Identifier with indicator		
2178-LS/4-LUG	Fiber Optic Splice Case 2178-LS, 288 single-fusion/864 mass-fusion capacity with four cable entry kits and four ground lugs			2181-LS	Cable Addition Kit for fiber optic splice case 2178-LS series	VFL-350	Visual Fault Locator, 2.5-mm ferrule adapter
SLFC-533-N-SP-0X	533 SLiC® Fiber Aerial Closure with no tray			2543-D-288RF Tray	Fiber Optic Splice Tray, 288 ribbon fiber capacity		
		2534-D-96SF tray	Fiber Optic Splice Tray, 96 single fusion capacity				

OM3 (50 μm Multimode Fiber) Cables

Indoor Cable							
MIC® Cable (Non-Armored)		MIC DX Armored Cable (Nonmetallic)		MIC Interlocking Armored Cable (Metallic)		2.0-mm Zipcord Cable	
Riser	Plenum	Plenum		Riser	Plenum	Riser	Plenum
006T81-31180-24	006T88-31180-29	006T88-31180-D3		006T81-31180-A1	006T88-31180-A3	002T51-31380-24	002T58-31380-24
012T81-33180-24	012T88-33180-29	012T88-33180-D3		012T81-33180-A1	012T88-33180-A3		
024T81-33180-24	024T88-33180-29	024T88-33180-D3		024T81-33180-A1	024T88-33180-A3		

Indoor/Outdoor Cable						Outdoor Cable	
FREEDM® One Cable		FREEDM LST™ Cable		FREEDM Loose Tube Cable		ALTOS® Cable with FastAccess® Technology	
Riser	Plenum	Riser	Plenum	Riser	Plenum	OSP	
024T8F-31180-29	024T8P-31180-29	006TSF-T4180D20	006TSP-T4180D20	024TUF-T4180D20	024TWP-T4180D20	024TU4-T4780D20	
048T8F-61180-29	048T8P-61180-29	012TSF-T4180D20	012TSP-T4180D20	048TUF-T4180D20	048TWP-T4180D20	048TU4-T4780D20	
072T8F-T3180-29	072T8P-T3180-29	024TSF-T4180D20		072TUF-T4180D20	072TWP-T4180D20	072TU4-T4780D20	
096T8F-Y3180-29	096T8P-Y3180-29					096TU4-T4780D20	
144T8F-Y3180-29	144T8P-Y3180-29					144TU4-T4780D20	

Panels/Cassettes

Standard Panels				Pigttailed Cassettes*			
Fiber Count	LC	SC Duplex	ST® Compatible	Fiber Count	LC	SC Duplex	ST Compatible
6	CCH-CP06-E4	CCH-CP06-E7	CCH-CP06-H3	6	Available†	Available†	Available†
12	CCH-CP12-E4	CCH-CP12-E7	CCH-CP12-H3	12	CCH-CS12-E4-P00TE	Available†	Available†
24	CCH-CP24-E4			24	CCH-CS24-E4-P00TE		

*Pigttailed cassettes for CCH, SCH, and WCH hardware. †Available with lead time. Refer to LAN-1129-EN.

Hardware

Rack-Mountable Hardware	
CCH-01U	Closet Connector Housing, 1U, accepts up to two CCH panels or cassettes
CCH-02U	Closet Connector Housing, 2U, accepts up to four CCH panels or cassettes
CCH-03U	Closet Connector Housing, 3U, accepts up to six CCH panels or cassettes
CCH-04U	Closet Connector Housing, 4U, accepts up to 12 CCH panels or cassettes

Connectors

Termination	Performance	LC	SC	ST Compatible
UniCam® Connectors	High Performance (0.5 dB maximum)	95-050-99-X*	95-050-41-X*	95-050-51-X*
Anaerobic Connectors	Standard Performance	95-051-98-SP-X	95-051-41-SP-X	95-051-52-SP-X

*Add "-Z" to UniCam connector part number for 25/pack organizer pack (i.e. 95-050-99-Z). Includes boots for 900 μm only.

Toolkits

Toolkits	
UniCam™ High-Performance Toolkit 2	TKT-UNICAM-PFC2
UniCam High-Performance Toolkit	TKT-UNICAM-PFC
UniCam Standard-Performance Toolkit	TKT-UNICAM
Anaerobic Toolkit	TKT-ANAEROBIC2
Anaerobic Consumables	TKT-ANAEROBIC2-C

OM3 (50 μm Multimode Fiber)

Hardware

Wall-Mountable Hardware		Hardware Accessories	
SCH-01C	Single-Cassette Housing, holds one CCH cassette	SPH-DIN-KIT	DIN Rail Mounting Kit for SPH
SPH-01P	Single-Panel Housing, holds one CCH connector panel	ICH-SPLC-2	Splice Tray Holder for ICH-02P
WCH-02P	Wall-Mountable Connector Housing, holds two CCH connector panels or cassettes	ICH-SPLC-6	Splice Tray Holder for ICH-06P
WCH-04P	Wall-Mountable Connector Housing, holds four CCH connector panels or cassettes	CCHA-LOCK-KIT	Hardware Lock Kit for CCH and WCH housings only
WCH-06P	Wall-Mountable Connector Housing, holds six CCH connector panels or cassettes	HDWR-LOCK-KIT	Hardware Lock Kit for LANscape® hardware (not CCH or WCH)
EDC-02P-NH*	Environmental Distribution Center, holds two CCH connector panels, NEMA 4X	HDWR-GRND-KIT	Hardware Grounding Kit for LANscape hardware
EDC-06P-NH*	Environmental Distribution Center, holds six CCH connector panels, NEMA 4X	Cassettes/Splice Trays	
EDC-12P-NH*	Environmental Distribution Center, holds 12 CCH connector panels, NEMA 4X	CCH-CS	Splice Cassette, holds one CCH connector panel and up to 24 heat-shrink fusion splices
ICH-02P	Industrial Connector Housing, holds two CCH connector panels, NEMA 3S	CCH-CF	Termination Cassette, holds one CCH connector panel and up to 24 field terminations
ICH-06P	Industrial Connector Housing, holds six CCH connector panels, NEMA 3S	M67-048	Splice Tray, holds 12 heat-shrink fusion splices, for LANscape splice closures
ICH-12P	Industrial Connector Housing, holds 12 CCH connector panels, NEMA 3S	M67-076	Splice Tray, holds 12 heat-shrink fusion splices, for LANscape rack-mountable housings
		M67-110	Splice Tray, holds 12 heat-shrink fusion splices, for LANscape wall-mountable housings

*EDC also available for order in stainless steel.

Additional Products

2-Fiber Jumpers, Riser (3 m length)		Fan-Out Kits		Consumables	
050502T5120003M	LC Duplex to LC Duplex	FAN-BT25-06	Buffer Tube Fan-Out Kit, indoor, six fibers, 25-in legs, for use in temperature-controlled environments only	FCC-WIPES	Fiber Optic Wipes
575702T5120003M	SC Duplex to SC Duplex	FAN-BT25-12	Buffer Tube Fan-Out Kit, indoor, 12 fibers, 25-in legs, for use in temperature-controlled environments only	FCC-CLEANER-FIBER	Fiber Optic Cleaning Fluid
505002T5120003M	ST® Compatible to ST Compatible	FAN-OD25-06	Buffer Tube Fan-Out Kit, outdoor, six fibers, 25-in legs, for use in all applications	CLEANER-PORT-LC	Single-Fiber Port Cleaner, LC and keyed LC
055702T5120003M	LC Duplex to SC Duplex	FAN-OD25-12	Buffer Tube Fan-Out Kit, outdoor, 12 fibers, 25-in legs, for use in all applications	CLEANER-PORT-2.5	Single-Fiber Port Cleaner, SC and ST compatible
505702T5120003M	ST Compatible to SC Duplex			2806031-01	Heat-Shrink Fusion Splice Protectors, single-fiber, 60-mm long, Qty 50
Splice Closures		Accessories for SLiC Closures		Test Equipment	
2178-S-2172	Fiber Optic Splice Case 2178-S, 96 single-fusion/288 mass-fusion capacity	2527	Fiber Optic Splice Tray, compatible with 24 single-fusion or 144 mass-fusion splices	CHECKPOINT PRO BIF	CheckPoint Pro for bend-insensitive, multimode, and single-mode fibers
2178-LS/4-LUG	Fiber Optic Splice Case 2178-LS, 288 single-fusion/864 mass-fusion capacity with four cable entry kits and four ground lugs	SLIC-AC-HB2	Extended Hanger Bracket	VFL-350	Visual Fault Locator, 2.5-mm adapter
SLFC-533-N-SP-0X	533 SLiC® Fiber Aerial Closure with no tray	Accessories for 2178 Closures			
		2181-LS	Cable Addition Kit for fiber optic splice case 2178-LS series		
		2543-D-288RF Tray	Fiber Optic Splice Tray, 288 ribbon fiber capacity		
		2534-D-96SF tray	Fiber Optic Splice Tray, 96 single fusion capacity		

OM4 (50 μm Multimode Fiber)

Cables

Indoor Cable							
MIC® Cable (Non-Armored)		MIC DX Armored Cable (Nonmetallic)		MIC Interlocking Armored Cable (Metallic)		2.0-mm Zipcord Cable	
Riser	Plenum	Plenum		Riser	Plenum	Riser	Plenum
006T81-31190-24	006T88-31190-29	006T88-31190-D3		006T81-31190-A1	006T88-31190-A3	002T51-31390-24	002T58-31390-24
012T81-33190-24	012T88-33190-29	012T88-33190-D3		012T81-33190-A1	012T88-33190-A3		
024T81-33190-24	024T88-33190-29	024T88-33190-D3		024T81-33190-A1	024T88-33190-A3		

Indoor/Outdoor Cable						Outdoor Cable	
FREEDM® One Cable		FREEDM LST™ Cable		FREEDM Loose Tube Cable		ALTOS® Cable with FastAccess® Technology	
Riser	Plenum	Riser	Plenum	Riser	Plenum	OSP	
024T8F-31190-29	024T8P-31190-29	006T5F-T4190D20	006T5P-T4190D20	024TUF-T4190D20	024TWP-T4190D20	024TU4-T4790D20	
048T8F-61190-29	048T8P-61190-29	012T5F-T4190D20	012T5P-T4190D20	048TUF-T4190D20	048TWP-T4190D20	048TU4-T4790D20	
072T8F-T3190-29	072T8P-T3190-29	024T5F-T4190D20		072TUF-T4190D20	072TWP-T4190D20	072TU4-T4790D20	
096T8F-Y3190-29	096T8P-Y3190-29					096TU4-T470D20	
144T8F-Y3190-29	144T8P-Y3190-29					144TU4-T470D20	

Panels/Cassettes

Standard Panels				Pigtailed Cassettes*			
Fiber Count	LC	SC Duplex	ST® Compatible	Fiber Count	LC	SC Duplex	ST Compatible
6	CCH-CP06-E4	CCH-CP06-E7	CCH-CP06-H3	6	Available†	Available†	Available†
12	CCH-CP12-E4	CCH-CP12-E7	CCH-CP12-H3	12	CCH-CS12-E4-P00QE	Available†	Available†
24	CCH-CP24-E4			24	CCH-CS24-E4-P00QE		

*Pigtailed cassettes for CCH, SCH, and WCH hardware. †Available with lead time. Refer to LAN-1129-EN.

Hardware

Rack-Mountable Hardware	
CCH-01U	Closet Connector Housing, 1U, accepts up to two CCH panels or cassettes
CCH-02U	Closet Connector Housing, 2U, accepts up to four CCH panels or cassettes
CCH-03U	Closet Connector Housing, 3U, accepts up to six CCH panels or cassettes
CCH-04U	Closet Connector Housing, 4U, accepts up to 12 CCH panels or cassettes

Connectors

Termination	Performance	LC	SC	ST Compatible
UniCam® Connectors	High Performance (0.5 dB maximum)	95-050-99-X*	95-050-41-X*	95-050-51-X*
Anaerobic Connectors	Standard Performance	95-051-98-SP-X	95-051-41-SP-X	95-051-52-SP-X

*Add "-Z" to UniCam connector part number for 25/pack organizer pack (i.e. 95-050-99-Z). Includes boots for 900 μm only.

Toolkits

Toolkits	
UniCam™ High-Performance Toolkit 2	TKT-UNICAM-PFC2
UniCam High-Performance Toolkit	TKT-UNICAM-PFC
UniCam Standard-Performance Toolkit	TKT-UNICAM
Anaerobic Toolkit	TKT-ANAEROBIC2
Anaerobic Consumables	TKT-ANAEROBIC2-C

OM4 (50 μm Multimode Fiber)

Hardware

Wall-Mountable Hardware		Hardware Accessories	
SCH-01C	Single-Cassette Housing, holds one CCH cassette	SPH-DIN-KIT	DIN Rail Mounting Kit for SPH
SPH-01P	Single-Panel Housing, holds one CCH connector panel	ICH-SPLC-2	Splice Tray Holder for ICH-02P
WCH-02P	Wall-Mountable Connector Housing, holds two CCH connector panels or cassettes	ICH-SPLC-6	Splice Tray Holder for ICH-06P
WCH-04P	Wall-Mountable Connector Housing, holds four CCH connector panels or cassettes	CCHA-LOCK-KIT	Hardware Lock Kit for CCH and WCH housings only
WCH-06P	Wall-Mountable Connector Housing, holds six CCH connector panels or cassettes	HDWR-LOCK-KIT	Hardware Lock Kit for LANscape® hardware (not CCH or WCH)
EDC-02P-NH*	Environmental Distribution Center, holds two CCH connector panels, NEMA 4X	HDWR-GRND-KIT	Hardware Grounding Kit for LANscape hardware
EDC-06P-NH*	Environmental Distribution Center, holds six CCH connector panels, NEMA 4X	Cassettes/Splice Trays	
EDC-12P-NH*	Environmental Distribution Center, holds 12 CCH connector panels, NEMA 4X	CCH-CS	Splice Cassette, holds one CCH connector panel and up to 24 heat-shrink fusion splices
ICH-02P	Industrial Connector Housing, holds two CCH connector panels, NEMA 3S	CCH-CF	Termination Cassette, holds one CCH connector panel and up to 24 field terminations
ICH-06P	Industrial Connector Housing, holds six CCH connector panels, NEMA 3S	M67-048	Splice Tray, holds 12 heat-shrink fusion splices, for LANscape splice closures
ICH-12P	Industrial Connector Housing, holds 12 CCH connector panels, NEMA 3S	M67-076	Splice Tray, holds 12 heat-shrink fusion splices, for LANscape rack-mountable housings
		M67-110	Splice Tray, holds 12 heat-shrink fusion splices, for LANscape wall-mountable housings

*EDC also available for order in stainless steel.

Additional Products

2-Fiber Jumpers, Riser (3 m length)		Fan-Out Kits		Consumables	
050502Q5120003M	LC Duplex to LC Duplex	FAN-BT25-06	Buffer Tube Fan-Out Kit, indoor, six fibers, 25-in legs, for use in temperature-controlled environments only	FCC-WIPES	Fiber Optic Wipes
575702Q5120003M	SC Duplex to SC Duplex	FAN-BT25-12	Buffer Tube Fan-Out Kit, indoor, 12 fibers, 25-in legs, for use in temperature-controlled environments only	FCC-CLEANER-FIBER	Fiber Optic Cleaning Fluid
505002Q5120003M	ST® Compatible to ST Compatible	FAN-OD25-06	Buffer Tube Fan-Out Kit, outdoor, six fibers, 25-in legs, for use in all applications	CLEANER-PORT-LC	Single-Fiber Port Cleaner, LC and keyed LC
055702Q5120003M	LC Duplex to SC Duplex	FAN-OD25-12	Buffer Tube Fan-Out Kit, outdoor, 12 fibers, 25-in legs, for use in all applications	CLEANER-PORT-2.5	Single-Fiber Port Cleaner, SC and ST compatible
505702Q5120003M	ST Compatible to SC Duplex	Accessories for SLiC Closures		2806031-01	Heat-Shrink Fusion Splice Protectors, single-fiber, 60-mm long, Qty 50
Splice Closures		2527	Fiber Optic Splice Tray, compatible with 24 single-fusion or 144 mass-fusion splices	Test Equipment	
2178-S-2172	Fiber Optic Splice Case 2178-S, 96 single-fusion/288 mass-fusion capacity	SLIC-AC-HB2	Extended Hanger Bracket	CHECKPOINT PRO BIF	CheckPoint Pro for bend-insensitive, multimode, and single-mode fibers
2178-LS/4-LUG	Fiber Optic Splice Case 2178-LS, 288 single-fusion/864 mass-fusion capacity with four cable entry kits and four ground lugs	Accessories for 2178 Closures		VFL-350	Visual Fault Locator, 2.5-mm adapter
SLFC-533-N-SP-0X	533 SLiC® Fiber Aerial Closure with no tray	2181-LS	Cable Addition Kit for fiber optic splice case 2178-LS series		
		2543-D-288RF Tray	Fiber Optic Splice Tray, 288 ribbon fiber capacity		
		2534-D-96SF tray	Fiber Optic Splice Tray, 96 single fusion capacity		

OS2 (Single-Mode Fiber)

Cables

Indoor Cable						
MIC® Cable (Non-Armored)		MIC DX Armored Cable (Nonmetallic)		MIC Interlocking Armored Cable (Metallic)		2.0-mm Zipcord Cable
Riser	Plenum	Plenum		Riser	Plenum	Riser
006E81-31131-24	006E88-31131-29	006E88-31131-D3		006E81-31131-A1	006E88-31131-A3	002E51-31331-24
012E81-33131-24	012E88-33131-29	012E88-33131-D3		012E81-33131-A1	012E88-33131-A3	
024E81-33131-24	024E88-33131-29	024E88-33131-D3		024E81-33131-A1	024E88-33131-A3	

Indoor/Outdoor Cable						Outdoor Cable		
FREEDM® One Cable		FREEDM LST™ Cable		FREEDM Loose Tube Cable		ALTOS® Cable with Binderless* FastAccess® Technology	ALTOS Lite™ Armored	ALTOS Lite with FastAccess Technology
Riser	Plenum	Riser	Plenum	Riser	Plenum			
024E8F-31131-29	024E8P-31131-29	006ESF-T4101D20	006ESP-T4101D20	024EUF-T4101D20	024EWP-T4101D20	012ZU4-T4F22D20 ¹	012EUC-T4101D20 ¹	012ZUC-T4F22D20 ¹
048E8F-61131-29	048E8P-61131-29	012ESF-T4101D20	012ESP-T4101D20	048EUF-T4101D20	048EWP-T4101D20	024ZU4-T4F22D20 ¹	024EUC-T4101D20 ¹	024ZUC-T4F22D20 ¹
072E8F-T3131-29	072E8P-T3131-29	024ESF-T4101D20		072EUF-T4101D20	072EWP-T4101D20	048ZU4-T4F22D20 ¹	048EUC-T4101D20 ¹	048ZUC-T4F22D20 ¹
096E8F-Y3131-29	096E8P-Y3131-29					072ZU4-T4F22D20 ¹	072EUC-T4101D20 ¹	072ZUC-T4F22D20 ¹
144E8F-Y3131-29	144E8P-Y3131-29							

*Corning's proprietary binderless FastAccess® technology refers to the combination of a Corning FastAccess technology jacket with an innovative technology used to bind cable construction through the manufacturing process, eliminating the use of binder yarns and waterblocking tapes.

¹Contain only Corning® SMF-28® Ultra fiber.

Panels/Cassettes

Standard Panels				Pigttailed Cassettes*			
Fiber Count	LC	SC Duplex	ST® Compatible	Fiber Count	LC	SC Duplex	ST Compatible
6	CCH-CP06-A9	CCH-CP06-59	CCH-CP06-19T	6	Available†	Available†	Available†
12	CCH-CP12-A9	CCH-CP12-59	CCH-CP12-19T	12	CCH-CS12-A9-P00RE	CCH-CS12-59-P00RE	CCH-CS12-6T-P00RE
24	CCH-CP24-A9			24	CCH-CS24-A9-P00RE		

*Pigttailed cassettes for CCH, SCH, and WCH hardware. †Available with lead time. Refer to LAN-1129-EN.

Hardware

Rack-Mountable Hardware	
CCH-01U	Closet Connector Housing, 1U, accepts up to two CCH panels or cassettes
CCH-02U	Closet Connector Housing, 2U, accepts up to four CCH panels or cassettes
CCH-03U	Closet Connector Housing, 3U, accepts up to six CCH panels or cassettes
CCH-04U	Closet Connector Housing, 4U, accepts up to 12 CCH panels or cassettes

Connectors

Termination	Performance	LC	SC	ST Compatible
UniCam® Connectors UPC	High Performance (0.5 dB maximum)	95-200-99*	95-200-41*	95-200-51*
UniCam Connectors APC	High Performance (0.75 dB maximum)	95-200-94*	95-200-44*	
Anaerobic Connectors	Standard Performance	95-201-98-SP	95-201-41-SP	95-201-52-SP

*Add "-Z" to UniCam connector part number for 25/pack organizer pack (i.e. 95-050-99-Z). Includes boots for 900 µm only.

Toolkits

Toolkits	
UniCam™ High-Performance Toolkit 2	TKT-UNICAM-PFC2
UniCam High-Performance Toolkit	TKT-UNICAM-PFC
UniCam Standard-Performance Toolkit	TKT-UNICAM
Anaerobic Toolkit	TKT-ANAEROBIC2
Anaerobic Consumables	TKT-ANAEROBIC2-C

OS2 (Single-Mode Fiber)

Hardware

Wall-Mountable Hardware		Hardware Accessories	
SCH-01C	Single-Cassette Housing, holds one CCH cassette	SPH-DIN-KIT	DIN Rail Mounting Kit for SPH
SPH-01P	Single-Panel Housing, holds one CCH connector panel	ICH-SPLC-2	Splice Tray Holder for ICH-02P
WCH-02P	Wall-Mountable Connector Housing, holds two CCH connector panels or cassettes	ICH-SPLC-6	Splice Tray Holder for ICH-06P
WCH-04P	Wall-Mountable Connector Housing, holds four CCH connector panels or cassettes	CCHA-LOCK-KIT	Hardware Lock Kit for CCH and WCH housings only
WCH-06P	Wall-Mountable Connector Housing, holds six CCH connector panels or cassettes	HDWR-LOCK-KIT	Hardware Lock Kit for LANscape® hardware (not CCH or WCH)
EDC-02P-NH*	Environmental Distribution Center, holds two CCH connector panels, NEMA 4X	HDWR-GRND-KIT	Hardware Grounding Kit for LANscape hardware
EDC-06P-NH*	Environmental Distribution Center, holds six CCH connector panels, NEMA 4X	Cassettes/Splice Trays	
EDC-12P-NH*	Environmental Distribution Center, holds 12 CCH connector panels, NEMA 4X	CCH-CS	Splice Cassette, holds one CCH connector panel and up to 24 heat-shrink fusion splices
ICH-02P	Industrial Connector Housing, holds two CCH connector panels, NEMA 3S	CCH-CF	Termination Cassette, holds one CCH connector panel and up to 24 field terminations
ICH-06P	Industrial Connector Housing, holds six CCH connector panels, NEMA 3S	M67-048	Splice Tray, holds 12 heat-shrink fusion splices, for LANscape splice closures
ICH-12P	Industrial Connector Housing, holds 12 CCH connector panels, NEMA 3S	M67-076	Splice Tray, holds 12 heat-shrink fusion splices, for LANscape rack-mountable housings
		M67-110	Splice Tray, holds 12 heat-shrink fusion splices, for LANscape wall-mountable housings

*EDC also available for order in stainless steel.

Additional Products

2-Fiber Jumpers, Riser (3 m length)		Fan-Out Kits		Consumables	
040402G5120003M	LC Duplex to LC Duplex	FAN-BT25-06	Buffer Tube Fan-Out Kit, indoor, six fibers, 25-in legs, for use in temperature-controlled environments only	FCC-WIPES	Fiber Optic Wipes
727202G5120003M	SC Duplex to SC Duplex	FAN-BT25-12	Buffer Tube Fan-Out Kit, indoor, 12 fibers, 25-in legs, for use in temperature-controlled environments only	FCC-CLEANER-FIBER	Fiber Optic Cleaning Fluid
616102G5120003M	ST® Compatible to ST Compatible	FAN-OD25-06	Buffer Tube Fan-Out Kit, outdoor, six fibers, 25-in legs, for use in all applications	CLEANER-PORT-LC	Single-Fiber Port Cleaner, LC and keyed LC
047202G5120003M	LC Duplex to SC Duplex	FAN-OD25-12	Buffer Tube Fan-Out Kit, outdoor, 12 fibers, 25-in legs, for use in all applications	CLEANER-PORT-2.5	Single-Fiber Port Cleaner, SC and ST compatible
617202G5120003M	ST Compatible to SC Duplex			2806031-01	Heat-Shrink Fusion Splice Protectors, single-fiber, 60-mm long, Qty 50
Splice Closures		Accessories for SLiC Closures		Test Equipment	
2178-S-2172	Fiber Optic Splice Case 2178-S, 96 single-fusion/288 mass-fusion capacity	2527	Fiber Optic Splice Tray, compatible with 24 single-fusion or 144 mass-fusion splices	CHECKPOINT PRO	Fiber Traffic Identifier with indicator
2178-LS/4-LUG	Fiber Optic Splice Case 2178-LS, 288 single-fusion/864 mass-fusion capacity with four cable entry kits and four ground lugs	SLIC-AC-HB2	Extended Hanger Bracket	VFL-350	Visual Fault Locator, 2.5-mm adapter
SLFC-533-N-SP-0X	533 SLiC® Fiber Aerial Closure with no tray	Accessories for 2178 Closures			
		2181-LS	Cable Addition Kit for fiber optic splice case 2178-LS series		
		2543-D-288RF Tray	Fiber Optic Splice Tray, 288 ribbon fiber capacity		
		2534-D-96SF tray	Fiber Optic Splice Tray, 96 single fusion capacity		

Data Centers

Transmission Performance/Insertion Loss

EDGE™ Solutions: OM3

50 μm multimode fiber

EDGE Solutions: OM4

50 μm multimode fiber

EDGE Solutions: OS2

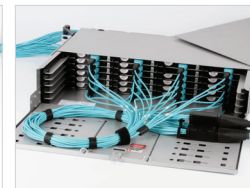
Single-mode fiber

EDGE8® Solutions: OM4

50 μm multimode fiber

EDGE8 Solutions: OS2

Single-mode fiber



The optical infrastructure in today's data center must deliver a competitive advantage, an immediate lower cost of ownership, and an evolution path to support next-generation applications. Corning can help.

Our solutions enable high-density, cost-effective 10G deployments and the simplest migration to 40, 100, and even 400G.

To learn more, visit us at corning.com/data-center

Transmission Performance/Insertion Loss

	OM3/OM4	OM5	OS2	Maximum Insertion Loss (dB)	OM3/OM4	OM5	OS2
Optical Fiber Type	50 μ m Multimode	50 μ m Multimode	Single-Mode	Connected Mated Pairs LC	0.10	0.10	0.25
Wavelength (nm)	850	850	1310/1550	MTP® Connector	0.25	0.25	0.35
Maximum Attenuation (dB/km)	2.8	2.8	0.4/0.3	EDGE™ Modules/Harnesses	0.5	0.5	1.0
Minimum Effective Modal Bandwidth (MHz•km)	2000/4700	2000/4700	– / –	EDGE8® Modules/Harnesses*	0.35	0.35	0.60

*Note: EDGE products are also available in ULL.

Ethernet Data Rate	Nomenclature	Fiber Type	Maximum Link Length (m)
1G	1000BASE-SX	OM3	1000
10G	10GBASE-SR	OM3/OM4/OM5	300/400/400
40G	40GBASE-SR4	OM3/OM4/OM5	100/150*/150*
100G	100GBASE-SR10	OM3/OM4/OM5	100/150/150
100G	100GBASE-SR4	OM3/OM4/OM5	100/150/150

Fibre Channel Data Rate	Nomenclature	Fiber Type	Maximum Link Length (m)
4 Gb/s	400-M5E-SN-I 400-M5F-SN-I	OM3/OM4/OM5	380/400/400
8 Gb/s	800-M5E-SN-I 800-M5F-SN-I	OM3/OM4/OM5	150/190/190
16 Gb/s	1600-M5E-SN-I 1600-M5F-SN-I	OM3/OM4/OM5	100/125/125
32 Gb/s	3200-M5E-SN-S 3200-M5F-SN-I	OM3/OM4/OM5	70/100/100
128 Gb/s	128GFC-SW4	OM3/OM4/OM5	70*/100*/100*

*Assumes connector-loss budget of 1 dB.

For more information about OM5 deployments, visit [corning.com/wide-band-multimode](https://www.corning.com/wide-band-multimode)

EDGE™ Solutions: OM3 (50 μ m Multimode Fiber)

Trunks

Non-Armored Plenum Trunks, 33-in Leg Length, Non-Pinned MTP® to Non-Pinned MTP, Pulling Grip One Side	
Fiber Count	Catalog Part Number
12	G757512TPNDDUxxxF
24	G757524TPNDDUxxxF
48	G757548TPNDDUxxxF
72	G757572TPNDDUxxxF
96	G757596TPNDDUxxxF
144	G7575E4TPNDDUxxxF
192	G7575K2TPNDDUxxxF
288	G7575U8TPNDDUxxxF
432	G7575AKTPNDDUxxxF
576	G7575AZTPNDDUxxxF

Notes:

- xxx = cable length of 005-999 ft.
- 1-ft increments measured from furcation plug to furcation plug.
- Lengths beyond 999 ft available.

Harnesses

Harnesses – Pinned	
H937912TPH-1AxxxF	EDGE™ MTP to LC Staggered Harness, 12 F, 50 μ m multimode (OM3), MTP PRO (pinned) to LC duplex uniboot, type-A polarity, type 1 stagger, xxx ft
H937912TPH-2AxxxF	EDGE MTP to LC Staggered Harness, 12 F, 50 μ m multimode (OM3), MTP PRO (pinned) to LC duplex uniboot, type-A polarity, type 2 stagger, xxx ft
H937912TPH-3AxxxF	EDGE MTP to LC Staggered Harness, 12 F, 50 μ m multimode (OM3), MTP PRO (pinned) to LC duplex uniboot, type-A polarity, type 3 stagger, xxx ft
H937912TPH-4AxxxF	EDGE MTP to LC Staggered Harness, 12 F, 50 μ m multimode (OM3), MTP PRO (pinned) to LC duplex uniboot, type-A polarity, type 4 stagger, xxx ft
H937912TPH-5AxxxF	EDGE MTP to LC Staggered Harness, 12 F, 50 μ m multimode (OM3), MTP PRO (pinned) to LC duplex uniboot, type-A polarity, type 5 stagger, xxx ft

Harnesses – Non-Pinned	
H757912TPH-1BxxxF	EDGE MTP to LC Staggered Harness, 12 F, 50 μ m multimode (OM3), MTP PRO (non-pinned) to LC duplex uniboot, type-B polarity, type 1 stagger, xxx ft
H757912TPH-2BxxxF	EDGE MTP to LC Staggered Harness, 12 F, 50 μ m multimode (OM3), MTP PRO (non-pinned) to LC duplex uniboot, type-B polarity, type 2 stagger, xxx ft
H757912TPH-3BxxxF	EDGE MTP to LC Staggered Harness, 12 F, 50 μ m multimode (OM3), MTP PRO (non-pinned) to LC duplex uniboot, type-B polarity, type 3 stagger, xxx ft
H757912TPH-4BxxxF	EDGE MTP to LC Staggered Harness, 12 F, 50 μ m multimode (OM3), MTP PRO (non-pinned) to LC duplex uniboot, type-B polarity, type 4 stagger, xxx ft
H757912TPH-5BxxxF	EDGE MTP to LC Staggered Harness, 12 F, 50 μ m multimode (OM3), MTP PRO (non-pinned) to LC duplex uniboot, type-B polarity, type 5 stagger, xxx ft

Notes:

- For stagger selection, reference applications engineering note AEN157.
- xxx = harness length up to 20 ft.

Panels/Modules

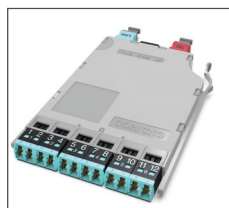
Panels	
EDGE-CP24-E3	24-Fiber MTP Adapter Panel
EDGE-CP48-E3	48-Fiber MTP Adapter Panel
EDGE-CP72-U3	72-Fiber MTP Adapter Panel

Modules	
ECM-UM12-05-93T	12-Fiber LC Duplex to Pinned MTP

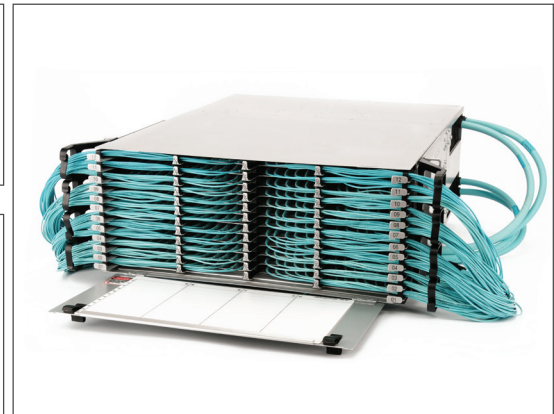
Tap Modules	
ETM-5A-Q	EDGE Tap Module, type-A (LC to LC), OM4, 50/50 split ratio
ETM-5B-Q	EDGE Tap Module, type-B (MTP to LC), OM4, 50/50 split ratio
ETM-5C-Q	EDGE Tap Module, type-C (MTP to MTP), OM4, 50/50 split ratio
ETM-7A-Q	EDGE Tap Module, type-A (LC to LC), OM4, 70/30 split ratio
ETM-7B-Q	EDGE Tap Module, type-B (MTP to LC), OM4, 70/30 split ratio
ETM-7C-Q	EDGE Tap Module, type-C (MTP to MTP), OM4, 70/30 split ratio



EDGE Trunk Cable



EDGE Tap Module



EDGE 4U Housing

EDGE™ Solutions: OM3 (50 μm Multimode Fiber)

Hardware

Rack-Mountable Hardware	
EDGE-01U	EDGE™ HD Housing, 1U, holds eight modules or panels
EDGE-01U-SP	EDGE HD Housing, 1U, holds 12 modules or panels
EDGE-02U	EDGE HD Housing, 2U, holds 24 modules or panels
EDGE-04U	EDGE HD Housing, 4U, holds 48 modules or panels
Rack-Less Brackets	
EDGE-BKT-WT-2RU	EDGE Housing Mounting Bracket for wire tray, 2U
EDGE-BKT-WT-4RU	EDGE Housing Mounting Bracket for wire tray, 4U
EDGE-BKT-LR-2RU	EDGE Housing Mounting Bracket for ladder rack, 2U
EDGE-BKT-LR-4RU	EDGE Housing Mounting Bracket for ladder rack, 4U

Jumpers

OM3 Jumpers	
797902TD120001M	Reverse Polarity LC Uniboot Jumper, 1 m
797902TD120002M	Reverse Polarity LC Uniboot Jumper, 2 m
797902TD120003M	Reverse Polarity LC Uniboot Jumper, 3 m
Jumper in a Box	
7979-OM3-B70-01M	Reverse Polarity LC Uniboosts, 1 m, Qty 70
7979-OM3-B70-02M	Reverse Polarity LC Uniboosts, 2 m, Qty 70
7979-OM3-B70-03M	Reverse Polarity LC Uniboosts, 3 m, Qty 70

Non-Pinned MTP® PRO to Non-Pinned MTP PRO Jumpers	
J757512TE8-NAxxxF	Type-A Jumper, xxx ft
J757512TE8-NBxxxF	Type-B Jumper, xxx ft
Non-Pinned MTP PRO to Pinned MTP PRO Jumpers	
J759312TE8-NAxxxF	Type-A Jumper, xxx ft
J759312TE8-NBxxxF	Type-B Jumper, xxx ft
Pinned MTP PRO to Pinned MTP PRO Jumpers	
J939312TE8-NAxxxF	Type-A Jumper, xxx ft
J939312TE8-NBxxxF	Type-B Jumper, xxx ft

Additional Products

Consumables		Test Equipment	
2104466-01	MTP® Connector and Adapter Cleaner	CHECKPOINT PRO BIF	CheckPoint Pro for bend-insensitive, multimode, and single-mode fibers
CLEANER-PORT-2.5	Single-Fiber Port Cleaner, SC		
CLEANER-PORT-LC	Single-Fiber Port Cleaner, LC and keyed LC	VFL-350	Visual Fault Locator, 2.5-mm adapter

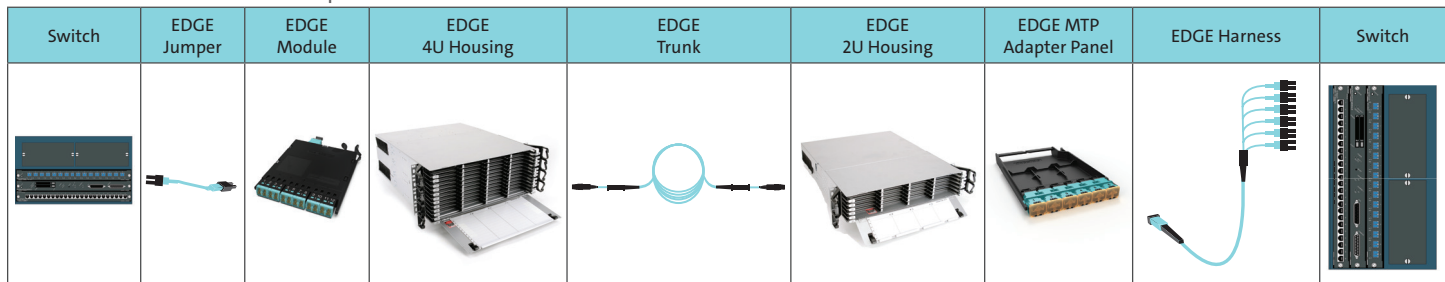
Notes:

• xxx = jumper length.

• For parallel optics and port breakout applications' pinning and polarity, please reference applications engineering notes AEN151 and AEN152.

MTP PRO Products	
MTPPRO-TOOL	Field tool to perform pinning and polarity changes of MTP® PRO connectors
MTPPRO-PEX-MME-NOPINS	MTP PRO Pin Exchanger Kit, Multimode MTP Elite, empty (without pins)
MTPPRO-PEX-MME-PINS	MTP PRO Pin Exchanger Kit, Multimode MTP Elite, loaded (with pins)

EDGE Solutions Fiber Optic Link



EDGE™ Solutions: OM4 (50 μ m Multimode Fiber)

Trunks

Non-Armored Plenum Trunks, 33-in Leg Length, Non-Pinned MTP® to Non-Pinned MTP, Pulling Grip One Side	
Fiber Count	Catalog Part Number
12	G757512QPNDUxxxF
24	G757524QPNDUxxxF
48	G757548QPNDUxxxF
72	G757572QPNDUxxxF
96	G757596QPNDUxxxF
144	G7575E4QPNDUxxxF
192	G7575K2QPNDUxxxF
288	G7575U8QPNDUxxxF
432	G7575AKQPNDUxxxF
576	G7575AZQPNDUxxxF

Notes:

- xxx = cable length of 005-999 ft.
- 1-ft increments measured from furcation plug to furcation plug.
- Lengths beyond 999 ft available.

Harnesses

Harnesses – Pinned	
H937912QPH-1AxxxF	EDGE™ MTP to LC Staggered Harness, 12 F, 50 μ m multimode (OM4), MTP PRO (pinned) to LC duplex uniboot, type-A polarity, type 1 stagger, xxx ft
H937912QPH-2AxxxF	EDGE MTP to LC Staggered Harness, 12 F, 50 μ m multimode (OM4), MTP PRO (pinned) to LC duplex uniboot, type-A polarity, type 2 stagger, xxx ft
H937912QPH-3AxxxF	EDGE MTP to LC Staggered Harness, 12 F, 50 μ m multimode (OM4), MTP PRO (pinned) to LC duplex uniboot, type-A polarity, type 3 stagger, xxx ft
H937912QPH-4AxxxF	EDGE MTP to LC Staggered Harness, 12 F, 50 μ m multimode (OM4), MTP PRO (pinned) to LC duplex uniboot, type-A polarity, type 4 stagger, xxx ft
H937912QPH-5AxxxF	EDGE MTP to LC Staggered Harness, 12 F, 50 μ m multimode (OM4), MTP PRO (pinned) to LC duplex uniboot, type-A polarity, type 5 stagger, xxx ft

Harnesses – Non-Pinned	
H757912QPH-1BxxxF	EDGE MTP to LC Staggered Harness, 12 F, 50 μ m multimode (OM4), MTP PRO (non-pinned) to LC duplex uniboot, type-B polarity, type 1 stagger, xxx ft
H757912QPH-2BxxxF	EDGE MTP to LC Staggered Harness, 12 F, 50 μ m multimode (OM4), MTP PRO (non-pinned) to LC duplex uniboot, type-B polarity, type 2 stagger, xxx ft
H757912QPH-3BxxxF	EDGE MTP to LC Staggered Harness, 12 F, 50 μ m multimode (OM4), MTP PRO (non-pinned) to LC duplex uniboot, type-B polarity, type 3 stagger, xxx ft
H757912QPH-4BxxxF	EDGE MTP to LC Staggered Harness, 12 F, 50 μ m multimode (OM4), MTP PRO (non-pinned) to LC duplex uniboot, type-B polarity, type 4 stagger, xxx ft
H757912QPH-5BxxxF	EDGE MTP to LC Staggered Harness, 12 F, 50 μ m multimode (OM4), MTP PRO (non-pinned) to LC duplex uniboot, type-B polarity, type 5 stagger, xxx ft

Notes:

- For stagger selection, reference applications engineering note AEN157.

- xxx = harness length up to 20 ft.

Panels/Modules

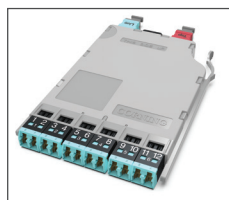
Panels	
EDGE-CP24-E3	24-Fiber MTP Adapter Panel
EDGE-CP48-E3	48-Fiber MTP Adapter Panel
EDGE-CP72-U3	72-Fiber MTP Adapter Panel

Modules	
ECM-UM12-05-93Q	12-Fiber LC Duplex to Pinned MTP
ECM-UM12-05-93Q-ULL	Ultra-Low-Loss 12-Fiber LC Duplex to Pinned MTP

Tap Modules	
ETM-5A-Q	EDGE Tap Module, type-A (LC to LC), OM4, 50/50 split ratio
ETM-5B-Q	EDGE Tap Module, type-B (MTP to LC), OM4, 50/50 split ratio
ETM-5C-Q	EDGE Tap Module, type-C (MTP to MTP), OM4, 50/50 split ratio
ETM-7A-Q	EDGE Tap Module, type-A (LC to LC), OM4, 70/30 split ratio
ETM-7B-Q	EDGE Tap Module, type-B (MTP to LC), OM4, 70/30 split ratio
ETM-7C-Q	EDGE Tap Module, type-C (MTP to MTP), OM4, 70/30 split ratio



EDGE Module



EDGE Tap Module



EDGE 4U Housing

EDGE™ Solutions: OM4 (50 μm Multimode Fiber)

Hardware

Rack-Mountable Hardware	
EDGE-01U	EDGE™ HD Housing, 1U, holds eight modules or panels
EDGE-01U-SP	EDGE HD Housing, 1U, holds 12 modules or panels
EDGE-02U	EDGE HD Housing, 2U, holds 24 modules or panels
EDGE-04U	EDGE HD Housing, 4U, holds 48 modules or panels

Rack-Less Brackets	
EDGE-BKT-WT-2RU	EDGE Housing Mounting Bracket for wire tray, 2U
EDGE-BKT-WT-4RU	EDGE Housing Mounting Bracket for wire tray, 4U
EDGE-BKT-LR-2RU	EDGE Housing Mounting Bracket for ladder rack, 2U
EDGE-BKT-LR-4RU	EDGE Housing Mounting Bracket for ladder rack, 4U

Jumpers

OM4 Jumpers	
797902QD120001M	Reverse Polarity LC Uniboot Jumper, 1 m
797902QD120002M	Reverse Polarity LC Uniboot Jumper, 2 m
797902QD120003M	Reverse Polarity LC Uniboot Jumper, 3 m

Jumper in a Box	
7979-OM4-B70-01M	Reverse Polarity LC Uniboos, 1 m, Qty 70
7979-OM4-B70-02M	Reverse Polarity LC Uniboos, 2 m, Qty 70
7979-OM4-B70-03M	Reverse Polarity LC Uniboos, 3 m, Qty 70

Non-Pinned MTP® PRO to Non-Pinned MTP PRO Jumpers	
J757512QE8-NAxxxF	Type-A Jumper, xxx ft
J757512QE8-NBxxxF	Type-B Jumper, xxx ft

Non-Pinned MTP PRO to Pinned MTP PRO Jumpers	
J759312QE8-NAxxxF	Type-A Jumper, xxx ft
J759312QE8-NBxxxF	Type-B Jumper, xxx ft

Pinned MTP PRO to Pinned MTP PRO Jumpers	
J939312QE8-NAxxxF	Type-A Jumper, xxx ft
J939312QE8-NBxxxF	Type-B Jumper, xxx ft

Notes:

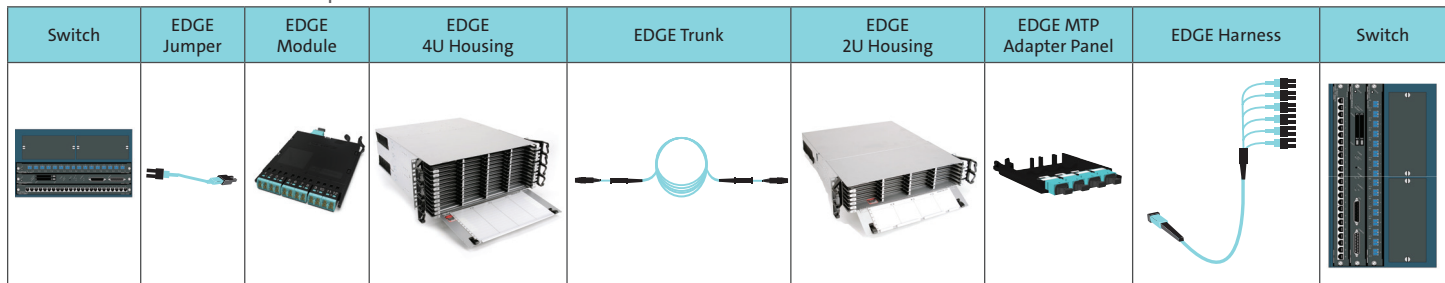
- xxx = jumper length.
- For parallel optics and port breakout applications' pinning and polarity, please reference applications engineering notes AEN151 and AEN152.

Additional Products

Consumables		Test Equipment	
2104466-01	MTP Connector and Adapter Cleaner	CHECKPOINT PRO BIF	CheckPoint Pro for bend-insensitive, multimode, and single-mode fibers
CLEANER-PORT-2.5	Single-Fiber Port Cleaner, SC		
CLEANER-PORT-LC	Single-Fiber Port Cleaner, LC and keyed LC	VFL-350	Visual Fault Locator, 2.5-mm adapter

MTP PRO Products	
MTPPRO-TOOL	Field tool to perform pinning and polarity changes of MTP PRO connectors
MTPPRO-PEX-MME-NOPINS	MTP PRO Pin Exchanger Kit, Multimode MTP Elite, empty (without pins)
MTPPRO-PEX-MME-PINS	MTP PRO Pin Exchanger Kit, Multimode MTP Elite, loaded (with pins)

EDGE Solutions Fiber Optic Link



EDGE™ Solutions: OS2 (Single-Mode Fiber)

Trunks

Non-Armored Plenum Trunks, 33-in Leg Length, Non-Pinned MTP® to Non-Pinned MTP, Pulling Grip One Side	
Fiber Count	Catalog Part Number
12	G909012GPNDUxxxF
24	G909024GPNDUxxxF
48	G909048GPNDUxxxF
72	G909072GPNDUxxxF
96	G909096GPNDUxxxF
144	G9090E4GPNDUxxxF
192	G9090K2GPNDUxxxF
288	G9090U8GPNDUxxxF
432	G9090AKGPNDUxxxF
576	G9090AZGPNDUxxxF

Notes:

- xxx = cable length of 005-999 ft.
- 1-ft increments measured from furcation plug to furcation plug.
- Lengths beyond 999 ft available.

Harnesses

Harnesses – Pinned	
H897812GPH-1AxxxF	EDGE™ MTP to LC Staggered Harness, 12 F, single-mode (OS2), MTP PRO (pinned) to LC duplex uniboot, type-A polarity, type 1 stagger, xxx ft
H897812GPH-2AxxxF	EDGE MTP to LC Staggered Harness, 12 F, single-mode (OS2), MTP PRO (pinned) to LC duplex uniboot, type-A polarity, type 2 stagger, xxx ft
H897812GPH-3AxxxF	EDGE MTP to LC Staggered Harness, 12 F, single-mode (OS2), MTP PRO (pinned) to LC duplex uniboot, type-A polarity, type 3 stagger, xxx ft
H897812GPH-4AxxxF	EDGE MTP to LC Staggered Harness, 12 F, single-mode (OS2), MTP PRO (pinned) to LC duplex uniboot, type-A polarity, type 4 stagger, xxx ft
H897812GPH-5AxxxF	EDGE MTP to LC Staggered Harness, 12 F, single-mode (OS2), MTP PRO (pinned) to LC duplex uniboot, type-A polarity, type 5 stagger, xxx ft

Harnesses – Non-Pinned	
H907812GPH-1BxxxF	EDGE MTP to LC Staggered Harness, 12 F, single-mode (OS2), MTP PRO (non-pinned) to LC duplex uniboot, type-B polarity, type 1 stagger, xxx ft
H907812GPH-2BxxxF	EDGE MTP to LC Staggered Harness, 12 F, single-mode (OS2), MTP PRO (non-pinned) to LC duplex uniboot, type-B polarity, type 2 stagger, xxx ft
H907812GPH-3BxxxF	EDGE MTP to LC Staggered Harness, 12 F, single-mode (OS2), MTP PRO (non-pinned) to LC duplex uniboot, type-B polarity, type 3 stagger, xxx ft
H907812GPH-4BxxxF	EDGE MTP to LC Staggered Harness, 12 F, single-mode (OS2), MTP PRO (non-pinned) to LC duplex uniboot, type-B polarity, type 4 stagger, xxx ft
H907812GPH-5BxxxF	EDGE MTP to LC Staggered Harness, 12 F, single-mode (OS2), MTP PRO (non-pinned) to LC duplex uniboot, type-B polarity, type 5 stagger, xxx ft

Notes:

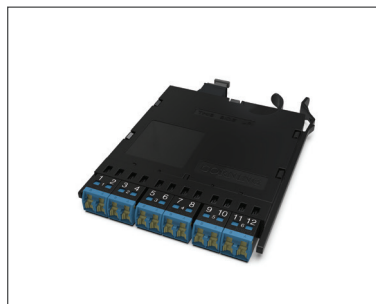
- For stagger selection, reference applications engineering note AEN157.
- xxx = harness length up to 20 ft.

Panels/Modules

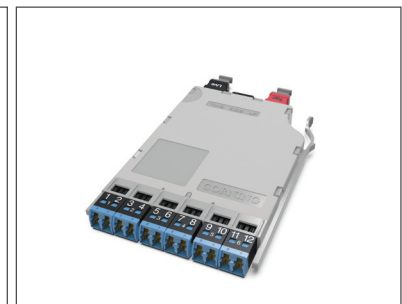
Panels	
EDGE-CP24-90	24-Fiber MTP Adapter Panel
EDGE-CP48-90	48-Fiber MTP Adapter Panel
EDGE-CP72-U1	72-Fiber MTP Adapter Panel

Modules	
ECM-UM12-04-89G	12-Fiber LC UPC Duplex to Pinned MTP
ECM-UM12-04-89G-ULL	Ultra-Low-Loss 12-Fiber LC UPC Duplex to Pinned MTP

Tap Modules	
ETM-5A-G	EDGE Tap Module, type-A (LC to LC), OS2, 50/50 split ratio
ETM-5B-G	EDGE Tap Module, type-B (MTP to LC), OS2, 50/50 split ratio
ETM-5C-G	EDGE Tap Module, type-C (MTP to MTP), OS2, 50/50 split ratio
ETM-7A-G	EDGE Tap Module, type-A (LC to LC), OS2, 70/30 split ratio
ETM-7B-G	EDGE Tap Module, type-B (MTP to LC), OS2, 70/30 split ratio
ETM-7C-G	EDGE Tap Module, type-C (MTP to MTP), OS2, 70/30 split ratio



EDGE Module



EDGE Tap Module

EDGE™ Solutions: OS2 (Single-Mode Fiber)

Hardware

Rack-Mountable Hardware	
EDGE-01U	EDGE™ HD Housing, 1U, holds eight modules or panels
EDGE-01U-SP	EDGE HD Housing, 1U, holds 12 modules or panels
EDGE-02U	EDGE HD Housing, 2U, holds 24 modules or panels
EDGE-04U	EDGE HD Housing, 4U, holds 48 modules or panels
Rack-Less Brackets	
EDGE-BKT-WT-2RU	EDGE Housing Mounting Bracket for wire tray, 2U
EDGE-BKT-WT-4RU	EDGE Housing Mounting Bracket for wire tray, 4U
EDGE-BKT-LR-2RU	EDGE Housing Mounting Bracket for ladder rack, 2U
EDGE-BKT-LR-4RU	EDGE Housing Mounting Bracket for ladder rack, 4U

Jumpers

OS2 Jumpers	
787802GD120001M	Reverse Polarity LC Uniboot Jumper, 1 m
787802GD120002M	Reverse Polarity LC Uniboot Jumper, 2 m
787802GD120003M	Reverse Polarity LC Uniboot Jumper, 3 m
Jumper in a Box	
7878-OS2-B70-01M	Reverse Polarity LC Uniboosts, 1 m, Qty 70
7878-OS2-B70-02M	Reverse Polarity LC Uniboosts, 2 m, Qty 70
7878-OS2-B70-03M	Reverse Polarity LC Uniboosts, 3 m, Qty 70

Non-Pinned MTP® PRO to Non-Pinned MTP PRO Jumpers	
J909012GE8-NAxxxF	Type-A Jumper, xxx ft
J909012GE8-NBxxxF	Type-B Jumper, xxx ft
Non-Pinned MTP PRO to Pinned MTP PRO Jumpers	
J908912GE8-NAxxxF	Type-A Jumper, xxx ft
J908912GE8-NBxxxF	Type-B Jumper, xxx ft
Pinned MTP PRO to Pinned MTP PRO Jumpers	
J898912GE8-NAxxxF	Type-A Jumper, xxx ft
J898912GE8-NBxxxF	Type-B Jumper, xxx ft

Additional Products








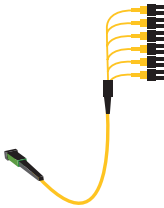
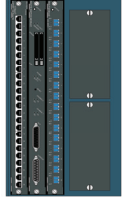
Consumables		Test Equipment		MTP PRO Products	
2104466-01	MTP Connector and Adapter Cleaner	CHECKPOINT PRO BIF	CheckPoint Pro for bend-insensitive, multimode, and single-mode fibers	MTPPRO-TOOL	Field tool to perform pinning and polarity changes of MTP PRO connectors
CLEANER-PORT-2.5	Single-Fiber Port Cleaner, SC		VFL-350	Visual Fault Locator, 2.5-mm adapter	MTPPRO-PEX-SME-NOPINS
CLEANER-PORT-LC	Single-Fiber Port Cleaner, LC and keyed LC			MTPPRO-PEX-SME-PINS	MTP PRO Pin Exchanger Kit, Single-Mode MTP Elite, loaded (with pins)

Notes:

• xxx = jumper length.

• For parallel optics and port breakout applications' pinning and polarity, please reference applications engineering notes AEN151 and AEN152.

EDGE Solutions Fiber Optic Link

Switch	EDGE Jumper	EDGE Module	EDGE 4U Housing	EDGE Trunk	EDGE 2U Housing	EDGE MTP Adapter Panel	EDGE Harness	Switch
								

EDGE8® Solutions: OM4 (50 μm Multimode Fiber)

Trunks

Non-Armored Plenum Trunks, 33-in Leg Length, Pinned MTP® to Pinned MTP, Pulling Grip One Side	
Fiber Count	Catalog Part Number
8	GE5E508QPNDUxxxF
16	GE5E516QPNDUxxxF
24	GE5E524QPNDUxxxF
32	GE5E532QPNDUxxxF
48	GE5E548QPNDUxxxF
72	GE5E572QPNDUxxxF
96	GE5E596QPNDUxxxF
144	GE5E54QPNDUxxxF
192	GE5E5K2QPNDUxxxF
288	GE5E5U8QPNDUxxxF

Notes:

- xxx = cable length of 005-999 ft.
- 1-ft increments measured from furcation plug to furcation plug.
- Lengths beyond 999 ft available.

Panels/Modules

Panels	
EDGE8-CP08-V3	8-Fiber MTP Adapter Panel
EDGE8-CP16-V3	16-Fiber MTP Adapter Panel
EDGE8-CP24-V3	24-Fiber MTP Adapter Panel
EDGE8-CP32-V3	32-Fiber MTP Adapter Panel

Harnesses

Harnesses – Pinned	
HE57908QPH-1BxxxF	EDGE8® MTP to LC Staggered Harness, 8 F, 50 μm multimode (OM4), MTP PRO (pinned) to LC duplex uniboot, TIA-568 type-B polarity, type 1 stagger, xxx ft
HE57908QPH-2BxxxF	EDGE8 MTP to LC Staggered Harness, 8 F, 50 μm multimode (OM4), MTP PRO (pinned) to LC duplex uniboot, TIA-568 type-B polarity, type 2 stagger, xxx ft
HE57908QPH-3BxxxF	EDGE8 MTP to LC Staggered Harness, 8 F, 50 μm multimode (OM4), MTP PRO (pinned) to LC duplex uniboot, TIA-568 type-B polarity, type 3 stagger, xxx ft
HE57908QPH-4BxxxF	EDGE8 MTP to LC Staggered Harness, 8 F, 50 μm multimode (OM4), MTP PRO (pinned) to LC duplex uniboot, TIA-568 type-B polarity, type 4 stagger, xxx ft
HE57908QPH-5BxxxF	EDGE8 MTP to LC Staggered Harness, 8 F, 50 μm multimode (OM4), MTP PRO (pinned) to LC duplex uniboot, TIA-568 type-B polarity, type 5 stagger, xxx ft

Harnesses – Non-Pinned	
HE67908QPH-1AxxxF	EDGE8 MTP to LC Staggered Harness, 8 F, 50 μm multimode (OM4), MTP PRO (non-pinned) to LC duplex uniboot, TIA-568 type-A polarity, type 1 stagger, xxx ft
HE67908QPH-2AxxxF	EDGE8 MTP to LC Staggered Harness, 8 F, 50 μm multimode (OM4), MTP PRO (non-pinned) to LC duplex uniboot, TIA-568 type-A polarity, type 2 stagger, xxx ft
HE67908QPH-3AxxxF	EDGE8 MTP to LC Staggered Harness, 8 F, 50 μm multimode (OM4), MTP PRO (non-pinned) to LC duplex uniboot, TIA-568 type-A polarity, type 3 stagger, xxx ft
HE67908QPH-4AxxxF	EDGE8 MTP to LC Staggered Harness, 8 F, 50 μm multimode (OM4), MTP PRO (non-pinned) to LC duplex uniboot, TIA-568 type-A polarity, type 4 stagger, xxx ft
HE67908QPH-5AxxxF	EDGE8 MTP to LC Staggered Harness, 8 F, 50 μm multimode (OM4), MTP PRO (non-pinned) to LC duplex uniboot, TIA-568 type-A polarity, type 5 stagger, xxx ft

Notes:

- For stagger selection, reference applications engineering note AEN157.

- xxx = harness length up to 20 ft.

Modules	
ECM8-UM08-05-E6Q-ULL	8-Fiber Ultra-Low-Loss LC Duplex to Non-Pinned MTP

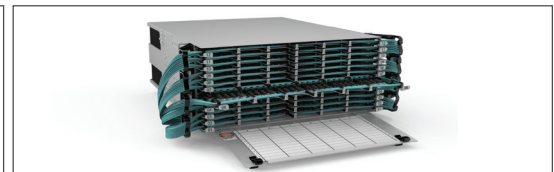
Port Breakout Module	
ECM8-05E6-QE8B-xxxF	Non-Pinned MTP to LC Duplex, plenum, type-B, xxx ft

Tap Modules	
ETM8-50A-Q	EDGE8 Tap Module, type-A (LC to LC), OM4, 50/50 split ratio
ETM8-50B-Q	EDGE8 Tap Module, type-B (MTP to LC), OM4, 50/50 split ratio
ETM8-50C-Q	EDGE8 Tap Module, type-C (MTP to MTP), OM4, 50/50 split ratio
ETM8-70A-Q	EDGE8 Tap Module, type-A (LC to LC), OM4, 70/30 split ratio
ETM8-70B-Q	EDGE8 Tap Module, type-B (MTP to LC), OM4, 70/30 split ratio
ETM8-70C-Q	EDGE8 Tap Module, type-C (MTP to MTP), OM4, 70/30 split ratio

Note: xxx = cable length up to 75 ft.



EDGE8 Harness



EDGE8 4U Housing

EDGE8® Solutions: OM4 (50 μm Multimode Fiber)

Hardware

Rack-Mountable Hardware	
EDGE8-01U	EDGE8® HD Housing, 1U, holds 12 modules or panels
EDGE8-01U-SP	EDGE8 HD Housing, 1U, holds 18 modules or panels
EDGE8-02U	EDGE8 HD Housing, 2U, holds 36 modules or panels
EDGE8-04U	EDGE8 HD Housing, 4U, holds 72 modules or panels
EDGE8-01U-TRAY	EDGE8-01U Slot Tray Kit, labeled 01 to 02, Qty 12
EDGE8-01U-SP-TRAY	EDGE8-01U-SP Slot Tray Kit, labeled 01 to 03, Qty 12
EDGE8-02U-TRAY	EDGE8-02U Slot Tray Kit, labeled 01 to 06, Qty 12
EDGE8-04U-TRAY	EDGE8-04U Slot Tray Kit, labeled 01 to 12, Qty 12

Rack-Less Brackets	
EDGE-BKT-WT-2RU	EDGE™ Housing Mounting Bracket for wire tray, 2U
EDGE-BKT-WT-4RU	EDGE Housing Mounting Bracket for wire tray, 4U
EDGE-BKT-LR-2RU	EDGE Housing Mounting Bracket for ladder rack, 2U
EDGE-BKT-LR-4RU	EDGE Housing Mounting Bracket for ladder rack, 4U

MTP PRO Products	
MTPPRO-TOOL	Field tool to perform pinning and polarity changes of MTP PRO connectors
MTPPRO-PEX-SME-NOPINS	MTP PRO Pin Exchanger Kit, Single-Mode MTP Elite, empty (without pins)
MTPPRO-PEX-SME-PINS	MTP PRO Pin Exchanger Kit, Single-Mode MTP Elite, loaded (with pins)

Jumpers

OM4 Jumpers	
797902QD120001M	Reverse Polarity LC Uniboot Jumper, 1 m
797902QD120002M	Reverse Polarity LC Uniboot Jumper, 2 m
797902QD120003M	Reverse Polarity LC Uniboot Jumper, 3 m
050502Q5120001M	LC Duplex Jumper, 1 m
050502Q5120002M	LC Duplex Jumper, 2 m
050502Q5120003M	LC Duplex Jumper, 3 m

Jumper in a Box	
7979-OM4-B70-01M	Reverse Polarity LC Uniboosts, 1 m, Qty 70
7979-OM4-B70-02M	Reverse Polarity LC Uniboosts, 2 m, Qty 70
7979-OM4-B70-03M	Reverse Polarity LC Uniboosts, 3 m, Qty 70
0505-ZR4-B70-01M	LC Duplex Jumpers, zipcord, 1 m, Qty 70
0505-ZR4-B60-02M	LC Duplex Jumpers, zipcord, 2 m, Qty 60
0505-ZR4-B50-03M	LC Duplex Jumpers, zipcord, 3 m, Qty 50

Non-Pinned MTP® PRO to Non-Pinned MTP PRO Jumpers	
JE6E608QE8-NAxxxF	Type-A Jumper, xxx ft
JE6E608QE8-NBxxxF	Type-B Jumper, xxx ft

Notes:

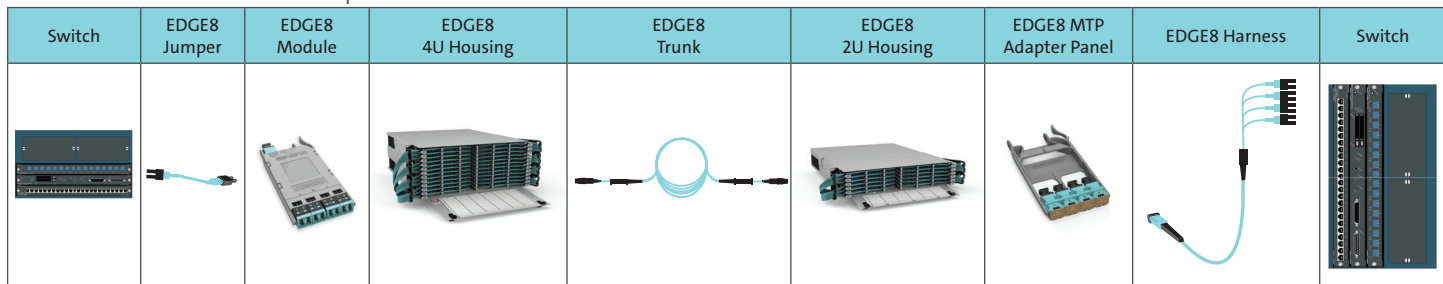
- xxx = jumper length.
- For parallel optics and port breakout applications' pinning and polarity, please reference applications engineering notes AEN151 and AEN152.

Additional Products

Consumables	
2104466-01	MTP Connector and Adapter Cleaner
CLEANER-PORT-2.5	Single-Fiber Port Cleaner, SC
CLEANER-PORT-LC	Single-Fiber Port Cleaner, LC and keyed LC

Test Equipment	
CHECKPOINT PRO BIF	CheckPoint Pro for bend-insensitive, multimode, and single-mode fibers
VFL-350	Visual Fault Locator, 2.5-mm adapter

EDGE8 Solutions Fiber Optic Link



EDGE8® Solutions: OS2 (Single-Mode Fiber)

Trunks

Non-Armored Plenum Trunks, 33-in Leg Length, Pinned MTP® to Pinned MTP, Pulling Grip One Side	
Fiber Count	Catalog Part Number
08	GE7E708GPNDUxxxF
16	GE7E716GPNDUxxxF
24	GE7E724GPNDUxxxF
32	GE7E732GPNDUxxxF
48	GE7E748GPNDUxxxF
72	GE7E772GPNDUxxxF
96	GE7E796GPNDUxxxF
144	GE7E748GPNDUxxxF
192	GE7E7K2GPNDUxxxF
288	GE7E7U8GPNDUxxxF

Notes:

- xxx = cable length of 005-999 ft.
- 1-ft increments measured from furcation plug to furcation plug.
- Lengths beyond 999 ft available.

Panels/Modules

Panels	
EDGE8-CP08-V1	8-Fiber MTP Adapter Panel
EDGE8-CP16-V1	16-Fiber MTP Adapter Panel
EDGE8-CP24-V1	24-Fiber MTP Adapter Panel
EDGE8-CP32-V1	32-Fiber MTP Adapter Panel

Harnesses

Harnesses – Pinned	
HE77808GPH-1BxxxF	EDGE8® MTP to LC Staggered Harness, 8 F, single-mode (OS2), MTP PRO (pinned) to LC duplex uniboot, TIA-568 type-B polarity, type 1 stagger, xxx ft
HE77808GPH-2BxxxF	EDGE8 MTP to LC Staggered Harness, 8 F, single-mode (OS2), MTP PRO (pinned) to LC duplex uniboot, TIA-568 type-B polarity, type 2 stagger, xxx ft
HE77808GPH-3BxxxF	EDGE8 MTP to LC Staggered Harness, 8 F, single-mode (OS2), MTP PRO (pinned) to LC duplex uniboot, TIA-568 type-B polarity, type 3 stagger, xxx ft
HE77808GPH-4BxxxF	EDGE8 MTP to LC Staggered Harness, 8 F, single-mode (OS2), MTP PRO (pinned) to LC duplex uniboot, TIA-568 type-B polarity, type 4 stagger, xxx ft
HE77808GPH-5BxxxF	EDGE8 MTP to LC Staggered Harness, 8 F, single-mode (OS2), MTP PRO (pinned) to LC duplex uniboot, TIA-568 type-B polarity, type 5 stagger, xxx ft

Harnesses – Non-Pinned	
HE87808GPH-1AxxxF	EDGE8 MTP to LC Staggered Harness, 8 F, single-mode (OS2), MTP PRO (non-pinned) to LC duplex uniboot, TIA-568 type-A polarity, type 1 stagger, xxx ft
HE87808GPH-2AxxxF	EDGE8 MTP to LC Staggered Harness, 8 F, single-mode (OS2), MTP PRO (non-pinned) to LC duplex uniboot, TIA-568 type-A polarity, type 2 stagger, xxx ft
HE87808GPH-3AxxxF	EDGE8 MTP to LC Staggered Harness, 8 F, single-mode (OS2), MTP PRO (non-pinned) to LC duplex uniboot, TIA-568 type-A polarity, type 3 stagger, xxx ft
HE87808GPH-4AxxxF	EDGE8 MTP to LC Staggered Harness, 8 F, single-mode (OS2), MTP PRO (non-pinned) to LC duplex uniboot, TIA-568 type-A polarity, type 4 stagger, xxx ft
HE87808GPH-5AxxxF	EDGE8 MTP to LC Staggered Harness, 8 F, single-mode (OS2), MTP PRO (non-pinned) to LC duplex uniboot, TIA-568 type-A polarity, type 5 stagger, xxx ft

Notes:

- For stagger selection, reference applications engineering note AEN157.

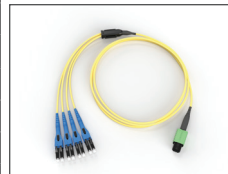
- xxx = harness length up to 20 ft.

Module	
ECM8-UM08-04-E8G-UULL	12-Fiber Ultra-Low-Loss LC UPC Duplex to Non-Pinned MTP

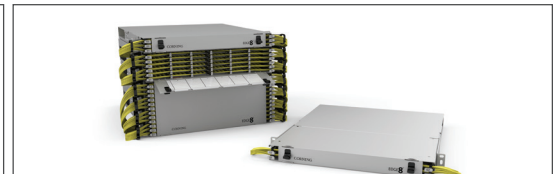
Port Breakout Module	
ECM8-04E8-GE8B-xxxF	Non-Pinned MTP to LC Duplex, plenum, type-B, xxx ft

Tap Modules	
ETM8-50A-G	EDGE8 Tap Module, type-A (LC to LC), OS2, 50/50 split ratio
ETM8-50B-G	EDGE8 Tap Module, type-B (MTP to LC), OS2, 50/50 split ratio
ETM8-50C-G	EDGE8 Tap Module, type-C (MTP to MTP), OS2, 50/50 split ratio
ETM8-70A-G	EDGE8 Tap Module, type-A (LC to LC), OS2, 70/30 split ratio
ETM8-70B-G	EDGE8 Tap Module, type-B (MTP to LC), OS2, 70/30 split ratio
ETM8-70C-G	EDGE8 Tap Module, type-C, (MTP to MTP), OS2, 70/30 split ratio

Note: xxx = cable length up to 75 ft.



EDGE8 Harness



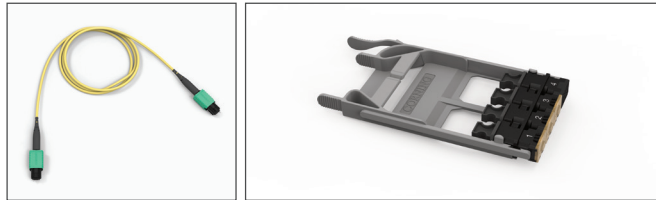
EDGE8 Housings

EDGE8® Solutions: OS2 (Single-Mode Fiber)

Hardware

Rack-Mountable Hardware	
EDGE8-01U	EDGE8® HD Housing, 1U, holds 12 modules or panels
EDGE8-01U-SP	EDGE8 HD Housing, 1U, holds 18 modules or panels
EDGE8-02U	EDGE8 HD Housing, 2U, holds 36 modules or panels
EDGE8-04U	EDGE8 HD Housing, 4U, holds 72 modules or panels
EDGE8-01U-TRAY	EDGE8-01U Slot Tray Kit, labeled 01 to 02, Qty 12
EDGE8-01U-SP-TRAY	EDGE8-01U-SP Slot Tray Kit, labeled 01 to 03, Qty 12
EDGE8-02U-TRAY	EDGE8-02U Slot Tray Kit, labeled 01 to 06, Qty 12
EDGE8-04U-TRAY	EDGE8-04U Slot Tray Kit, labeled 01 to 12, Qty 12

Rack-Less Brackets	
EDGE-BKT-WT-2RU	EDGE™ Housing Mounting Bracket for wire tray, 2U
EDGE-BKT-WT-4RU	EDGE Housing Mounting Bracket for wire tray, 4U
EDGE-BKT-LR-2RU	EDGE Housing Mounting Bracket for ladder rack, 2U
EDGE-BKT-LR-4RU	EDGE Housing Mounting Bracket for ladder rack, 4U



EDGE8 MTP Pro Jumper

EDGE8 MTP Panel

Jumpers

OS2 Jumpers	
787802GD120001M	Reverse Polarity LC Uniboot Jumper, 1 m
787802GD120002M	Reverse Polarity LC Uniboot Jumper, 2 m
787802GD120003M	Reverse Polarity LC Uniboot Jumper, 3 m

Jumper in a Box	
7878-OS2-B70-01M	Reverse Polarity LC Uniboosts, 1 m, Qty 70
7878-OS2-B70-02M	Reverse Polarity LC Uniboosts, 2 m, Qty 70
7878-OS2-B70-03M	Reverse Polarity LC Uniboosts, 3 m, Qty 70

Non-Pinned MTP PRO to Non-Pinned MTP PRO Jumpers	
JE8E808GE8-NAxxxF	Type-A Jumper, xxx ft
JE8E808GE8-NBxxxF	Type-B Jumper, xxx ft

Notes:

- xxx = jumper length.
- For parallel optics and port breakout applications' pinning and polarity, please reference applications engineering notes AEN151 and AEN152.

Additional Products

Consumables	
2104466-01	MTP® Connector and Adapter Cleaner
CLEANER-PORT-2.5	Single-Fiber Port Cleaner, SC
CLEANER-PORT-LC	Single-Fiber Port Cleaner, LC and keyed LC

Test Equipment	
CHECKPOINT PRO BIF	CheckPoint Pro for bend-insensitive, multimode, and single-mode fibers
VFL-350	Visual Fault Locator, 2.5-mm adapter

MTP PRO Products	
MTPPRO-TOOL	Field tool to perform pinning and polarity changes of MTP PRO connectors
MTPPRO-PEX-SME-NOPINS	MTP PRO Pin Exchanger Kit, Single-Mode MTP Elite, empty (without pins)
MTPPRO-PEX-SME-PINS	MTP PRO Pin Exchanger Kit, Single-Mode MTP Elite, loaded (with pins)

EDGE Solutions Fiber Optic Link

Switch	EDGE8 Jumper	EDGE8 Module	EDGE8 4U Housing	EDGE8 Trunk	EDGE8 2U Housing	EDGE8 MTP Adapter Panel	EDGE8 Harness	Switch

Programs and Resources

See the Light® Fiber Optic Training
Member Programs
Authorized Distributors
Technology Alliances
Technical Support
Resources



You know your network – and the importance of its reliability – better than anyone. That’s why we offer tailored support and resources to help you get the job done right the first time, every time. From design to deployment (and everything in between), you can count on Corning to expand your expertise and cost-effectively transform your network.

Check out our programs page for more information.
[corning.com/loyalty-programs](https://www.corning.com/loyalty-programs)

See the Light® Fiber Optic Training

So you can be successful in this time of rapid network transformation, we offer an array of training opportunities on the latest applications and products. For the most up-to-date industry knowledge – whether training in-person or at your desk – we have you covered. Visit corning.com/opcomm/stl for a full list of our training offerings.

Webinar Series

Stay current with the See the Light® webinar series, our monthly offering focused on specific topics impacting networks today. Participate in these one-hour live webinars to connect in real-time with Corning experts, or catch up on the webinar recordings at your convenience.

To find the full list of available webinars, visit: corning.com/opcomm/webinars

Instructor-Led Classes and Seminars

If it's classroom training that you feel is most valuable, our instructor-led courses are for you. We cover product and solution introductions, in-depth installation training, and classes focused on designing networks and specifying products. These classes range from two to three hours to multiday hands-on training sessions, each led by field instructors and experts who understand the needs of industry professionals.

To view our hands-on seminar schedule visit:

corning.com/opcomm/seminars.

To view our multiday design and installation training courses visit:

corning.com/opcomm/designandinstall

Online Learning

We understand that classroom training is not always an option. Learning opportunities are available when and where you need them through See the Light Learning Central, our on-demand learning platform. To gain access to See the Light Learning Central, email stlinfo@corning.com.

Industry-Approved Courses

Many of our courses and webinars have been approved by industry organizations, making it easy for you to continue your education while earning industry accreditations. Accreditation information can be found within the individual course listings or on our website.

For more information or to sign up to receive email updates on training visit:

corning.com/opcomm/stl

If you have any questions, email us at stlinfo@corning.com.





Member Programs

Elite Advantage Program

The Elite Advantage program provides architects, consultants, and engineers with the tools, training, and resources for their evolving businesses' need. Members have direct access to Corning's experts for design/technical support and access to our network of experienced integrators, installers, and distributors. Be Informed. Be Connected. Be Elite.

eliteadvan@corning.com • corning.com/eap

Fiber IQ® Program

The Fiber IQ program provides a direct line of communication between Corning and industry-leading fiber optics trainers. The program is designed to keep instructors informed of Corning's latest innovations and product releases, and it provides members with the most current fiber training materials.

fiberiq@corning.com • corning.com/opcomm/fiberiq

Network of Preferred Installers

The Network of Preferred Installers (NPI) connects network operators with local fiber optic installers meeting Corning's quality and training requirements. We are so confident that our preferred installers are the best in the industry, we will repair or replace defective products free of charge for up to 25 years after installation with our LANscape® solutions extended warranty.

npi@corning.com • corning.com/npi

Wireless Integrator Network Program

The Wireless Integrator Network (WIN) program is designed to provide members with tools, education, and resources to design, install, and commission our in-building wireless solutions. We developed the program with your business in mind, to address the specific challenges you face daily, and extend your technical and professional networks to gain customers and win business.

winprogram@corning.com • corning.com/opcomm/win



Authorized Distributors

We understand that pay-as-you-grow LAN, data center infrastructures, or fiber-to-the-edge deployments depend on modular products delivered fast. Thankfully, we've nurtured long-term relationships with authorized distributors who stock our products and further support the growing needs of our businesses' ecosystems, including training, customer needs assessment, project planning, design, and logistics. We consider our distributors a true force multiplier, a major contributor to our day-to-day and project business growth.

Accu-Tech[®]

accu-tech.com

ANIXTER

anixter.com

GraybaR[®]

graybar.com

WESCO[®]

wesco.com





Technology Alliances

Corning is committed to redefining innovation in local area networks and in the data center. This never-ending drive to solve your toughest challenges ensures that we work closely with technology allies to develop leading solutions for today and beyond.

Chatsworth Products, Inc.

Chatsworth Products, Inc. (CPI) focuses on addressing today's critical IT infrastructure needs with products and services that protect its customers' ever-growing investments. With Corning, CPI is uniquely prepared to respond to specific requirements with global availability and rapid product customization, providing a competitive advantage. CPI's unequalled customer service and technical support, as well as its global network of industry-leading distributors, enables product delivery and services designed to meet customer needs.

Headquartered in the United States, CPI operates global offices within the United States, Mexico, Canada, China, and the United Kingdom.

For more information, visit chatsworth.com

Fluke Networks

Corning and Fluke Networks work together to enhance the performance and reliability of enterprise fiber optic networks, developing solutions for tomorrow's data center technologies today. Fluke Networks provides tools and support so network installers and maintainers maximize the performance of their Corning networks while minimizing downtime. Fluke Networks solutions can certify the installation of Corning systems as well as troubleshoot problems that can result from improper installation, contamination, or misuse.

Based in Everett, Washington, Fluke Networks distributes products in more than 50 countries.

For more information, visit flukenetworks.com

Technical Support

Your customers and users expect reliable connectivity, and we know it takes more than products to deliver on those expectations. From us, you can expect collaborative global support for your network today to prepare it for emerging applications and services.

Connect with our network professionals at any phase of your project to take advantage of their training, experience, and equipment for a cost-effective, high-quality result. Our experts offer design and training services, technical assistance, and customer support resources.

You may be entering new territory – installing fiber in the horizontal or deploying a converged, all-optical infrastructure – but your application is something we've done before. And if it's a data center you're supporting, let's talk about how we can find more value in your given footprint.

WE CAN HELP.

corning.com/professional-services





Resources

Bill-of-Materials Tool

opcomm.corning.com/1-ENBOMTOOL.html

Product Drawings Selection Tool

opcomm.corning.com/CorningDrawingDatabase.html

Installation and Promotional Videos

corning.com/opcomm/videos

YouTube Channel

corning.com/opcomm/youtube

Training and Webinars

corning.com/opcomm/training

Technical Library

corning.com/resource-library

Technical Support

800-743-2673

corning.com/professional-services

Request for Quote

800-743-2675 (United States and Canada)

+1-828-901-5000 (International)

Order Tracker

<https://ordertracker.corning.com>

Spanish-Language Programs and Resources

corning.com/opcomm/pge.aspx

Customer Care

800-743-2675 (United States and Canada)

+1-828-901-5000 (International)

ccsamericas@corning.com

2019 Calendar

JANUARY

Sun	Mon	Tue	Wed	Thu	Fri	Sat
		1	2	3	4	5
6	7	8	9	10	11	12
13	14	15	16	17	18	19
20	21	22	23	24	25	26
27	28	29	30	31		

FEBRUARY

Sun	Mon	Tue	Wed	Thu	Fri	Sat
					1	2
3	4	5	6	7	8	9
10	11	12	13	14	15	16
17	18	19	20	21	22	23
24	25	26	27	28		

MARCH

Sun	Mon	Tue	Wed	Thu	Fri	Sat
					1	2
3	4	5	6	7	8	9
10	11	12	13	14	15	16
17	18	19	20	21	22	23
24	25	26	27	28	29	30
31						

APRIL

Sun	Mon	Tue	Wed	Thu	Fri	Sat
	1	2	3	4	5	6
7	8	9	10	11	12	13
14	15	16	17	18	19	20
21	22	23	24	25	26	27
28	29	30				

MAY

Sun	Mon	Tue	Wed	Thu	Fri	Sat
			1	2	3	4
5	6	7	8	9	10	11
12	13	14	15	16	17	18
19	20	21	22	23	24	25
26	27	28	29	30	31	

JULY

Sun	Mon	Tue	Wed	Thu	Fri	Sat
	1	2	3	4	5	6
7	8	9	10	11	12	13
14	15	16	17	18	19	20
21	22	23	24	25	26	27
28	29	30	31			

AUGUST

Sun	Mon	Tue	Wed	Thu	Fri	Sat
					1	2
3	4	5	6	7	8	9
10	11	12	13	14	15	16
17	18	19	20	21	22	23
24	25	26	27	28	29	30
31						

OCTOBER

Sun	Mon	Tue	Wed	Thu	Fri	Sat
1	2	3	4	5	6	7
8	9	10	11	12	13	14
15	16	17	18	19	20	21
22	23	24	25	26	28	28
29	30					

NOVEMBER

Sun	Mon	Tue	Wed	Thu	Fri	Sat
					1	2
3	4	5	6	7	8	9
10	11	12	13	14	15	16
17	18	19	20	21	22	23
24	25	26	27	28	29	30

DECEMBER

Sun	Mon	Tue	Wed	Thu	Fri	Sat
1	2	3	4	5	6	7
8	9	10	11	12	13	14
15	16	17	18	19	20	21
22	23	24	25	26	27	28
29	30	31				



CORNING

Register Your Core Guide

For A Chance To Win A \$100 Gift Card Each Month in 2019!*

*Visit corning.com/registermyguide to register

While supplies last. This offer is void where prohibited. The winner is responsible for complying with all the laws including tax laws, as well as any policies of his employer regarding gifts and prizes. Federal, state, and local governments and hospitals, including their employees and representatives, are not eligible to participate. Taxes, if any, are under the sole responsibility of the recipient of the gift.

LET'S CONNECT!



Corning Optical
Communications
#EvolveYourNetwork



Corning Optical
Communications
@CorningOpComm

Corning Representative: _____

Distribution Representative: _____

Phone Number: _____

Phone Number: _____

Email: _____

Email: _____

Corning Optical Communications LLC • PO Box 489 • Hickory, NC 28603-0489 USA
800-743-2675 • FAX: 828-325-5060 • International: +1-828-901-5000 • corning.com/opcomm

Corning Optical Communications reserves the right to improve, enhance, and modify the features and specifications of Corning Optical Communications products without prior notification. A complete listing of the trademarks of Corning Optical Communications is available at corning.com/opcomm/trademarks. All other trademarks are the properties of their respective owners. Corning Optical Communications is ISO 9001 certified. © 2019 Corning Optical Communications. All rights reserved. LAN-1273-AEN / March 2019

