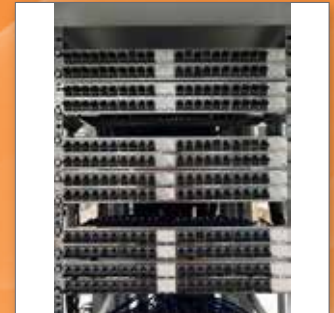


Enterprise Networks EMEA

**Core Products** FOR  
**DATA CENTRE  
NETWORKS**

CORNING

Autumn  
2014



# Data Centres

## GET IT RIGHT, Right Now.

Corning Optical Communications offers tens of thousands of fibre optic products for virtually any communications network need. But for many data centre and SAN projects, particularly moves, adds, and changes (MACs), availability of key product information and the ability to get the product in the shortest possible time is critical. That's what this Core Products List is all about.

Here you'll find the names and part numbers of Corning Optical Communications' most popular fibre optic solutions for data centres and SANs as well as copper products required to get the job done right – right now!

As a leader in fibre optic innovation, we've also included information on new products recently launched and a list of valuable resources that can save you time and money. We work hard to make sure these great products are on the shelves of our distributors, ready for purchase when you need them.

**This Core Products List is designed to make your job easier, faster, and more efficient.**

# Dc

Data Centre  
Products

# Qu

Quality

# In

Innovation



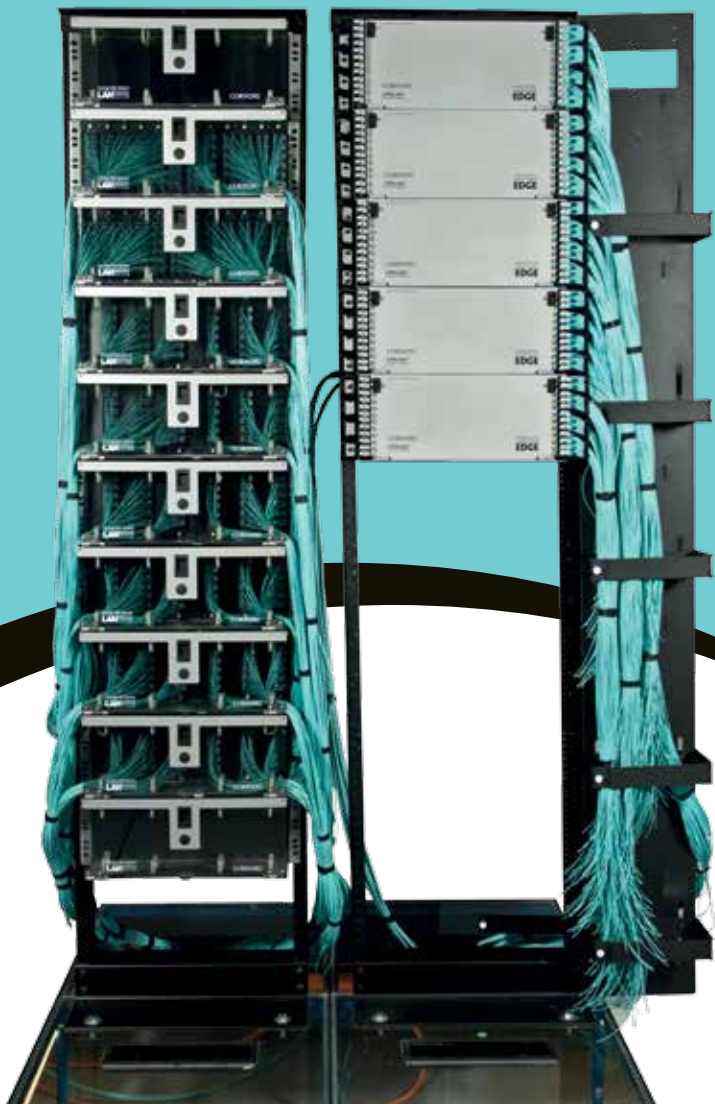
Get to know us!

## Corning Optical Communications

Corning Optical Communications is a leading manufacturer of fibre optic and shielded copper communications system solutions for voice, data, and video network applications **worldwide**. We offer the broadest range of end-to-end **fibre optic** and **copper** product solutions for customers' telecommunications networks.

Underpinning its **innovation** in fibre technology is Corning's pioneering production standards. All Corning optical fibre is **manufactured** by Corning, at Corning facilities, to unique specifications and designs. Production processes are managed and controlled in-house, to the highest possible **quality**.

THE  
**FUTURE**  
IS NOW





Enterprise Networks EMEA

# Fibre Core Products

FOR **DATA CENTRES**

Don't see what you're looking for? Visit:  
[www.corning.com/opcomm/emea](http://www.corning.com/opcomm/emea)

# CORNING

Fibre Core Products for Data Centres

Copper Core Products for Data Centres

Core Product Resources

## Fibre Optic Cables

EMEA Data Centre Core Products

6

**Did you know?** Corning® ClearCurve® bend-insensitive OM3/OM4 multimode fibres offer outstanding transmission performance in fibre optic cabling systems. Corning ClearCurve fibres are the world's first laser-optimised multimode fibres to withstand tight bends at or below 7.5 mm radius with substantially less signal loss than traditional multimode fibres, while being fully standards compliant and backwards compatible.



**To Bend or Not to Bend.**

**Not Much of a Question.**

The Corning ClearCurve optical fibre is the core element ensuring operational reliability when designing custom-engineered components thanks to the significant reduction in macrobend loss even in the most challenging bend scenarios. This enables Corning to provide significantly greater density across the range combined with simple design and integration for LAN and SAN areas within the data centre, while the pre-terminated components allow for reduced installation time and faster moves, adds, and changes (MACs).

## Recommended Standards for Multimode Fibre According to ITU or IEC

### The IEC 60793-1-47 Standard

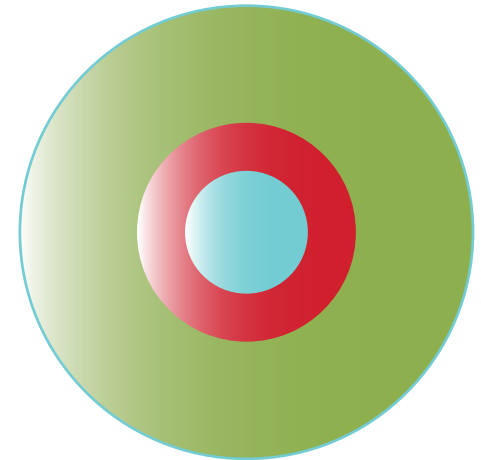
| Mandrel Radius | Number of Turns | Maximum Attenuation at 850 nm | Maximum Attenuation at 1300 nm |
|----------------|-----------------|-------------------------------|--------------------------------|
| 37.5 mm        | 100             | < 0.5 dB                      | < 0.5 dB                       |

### The ITU-T G.651.1 Standard

| Mandrel Radius | Number of Turns | Maximum Attenuation at 850 nm | Maximum Attenuation at 1300 nm |
|----------------|-----------------|-------------------------------|--------------------------------|
| 15 mm          | 2               | < 1.0 dB                      | < 1.0 dB                       |

### Corning® ClearCurve® Multimode Standard

| Mandrel Radius | Number of Turns | Maximum Attenuation at 850 nm | Maximum Attenuation at 1300 nm |
|----------------|-----------------|-------------------------------|--------------------------------|
| 37.5 mm        | 100             | < 0.15 dB                     | < 0.15 dB                      |
| 15 mm          | 2               | < 0.1 dB                      | < 0.3 dB                       |
| 7.5 mm         | 2               | < 0.2 dB                      | < 0.5 dB                       |



There is no specification for bending radii up to 7.5 mm

# Pretium EDGE® Solutions: the definition of innovation

FOR **Data Centre and Storage Area Networks**

At Corning, we define innovation as a never ending drive to solve our customers' problems. That's why we have continued to enrich our Pretium EDGE® Solutions for data centres. Greater design flexibility, more ease of installation, and an even smaller cable footprint were all designed with you in mind. After all, your network challenges don't stop growing. Shouldn't your technology, and its manufacturer, be able to keep up?

Corning fibre optic solutions for data centres and SANs ensure your data centre is ready for your needs today, as well as tomorrow. While our Plug & Play™ Universal Systems components provide the ultimate in scalability, functionality and reliability, our Pretium EDGE Solutions offer faster installation times and moves, adds, and changes (MACs) to make migration in your data centre easier.



edge (ěj)

v. To **advance** or push forward.

n. The point at which something **momentous** begins.

To learn more, visit [www.corning.com/opcomm/emea/pretiumedge](http://www.corning.com/opcomm/emea/pretiumedge)





# Here's the latest LOOK

at our continuous product improvement!

This is an overview of the complete Pretium EDGE® Solution, but not all products are listed in this Core Catalogue. If you want to know more, please refer to the Pretium EDGE family spec sheet or click the QR code on this page to upload to your mobile device.

Pretium EDGE®  
Universal Modules



Pretium EDGE  
AO Modules



Pretium EDGE  
Tap Modules



Pretium EDGE SE  
Splice Cassettes



LC Duplex  
Patch Cables



MTP® Connector  
Patch Cables



Pretium EDGE  
HD Housings



Pretium EDGE  
FX Housings



Subfloor  
Distribution  
Solution



Overhead  
Distribution  
on Cable Trays



Pretium EDGE  
Harness Types



Hybrid MTP to LC  
Duplex Trunks



MTP to MTP  
HD Trunks



# Why wait when you can have your Data Centre solution in days?

## FASTSHIP

### IN STOCK – 72 HRS READY TO SHIP

Corning is making it faster to receive your Pretium EDGE® and Plug & Play™ Universal Systems Solutions for Data Centres and Storage Area Networks. With our FastShip and FastConnect programmes, moves, adds, and changes (MACs) have never been quicker. Our FastShip programme provides expedited shipping on your day-to-day product needs, within 72 hours ready to ship, from our fast assembly lines and in-stock product assortment. Thanks to our relationship with leading distributors, we have a large inventory of fibre connectivity products available across the EMEA region for immediate use.\*

For more information, please contact

**Corning Customer Care**

**00800 2676 4641 or [emea.cs@corning.com](mailto:emea.cs@corning.com)**



This flag next to a product number denotes it is available under the FastShip/FastConnect programme.

\*Terms and conditions apply. Please visit <http://opcomm.corning.com/fast> for full details.

# Get It Right, Right Now.

## FASTCONNECT

### MADE TO ORDER – TWO WEEKS ON SITE

Can't find what you need in stock? Our Enterprise Core Products for Data Centers and SANs are available for quick shipment through our FastConnect programme. This “made-to-order” Programme provides shipping within two weeks upon receipt of your purchase order at Corning. When you select items from our product list, we can produce and ship your items faster than ever!\*

For more information, please contact

**Corning Care**

**00800 2676 4641 or [emea.cs@corning.com](mailto:emea.cs@corning.com)**











This flag next to a product number denotes it is available under the FastShip/FastConnect programme.

\*Terms and conditions apply. Please visit <http://opcomm.corning.com/fast> for full details.









# Duplex Optic Systems

Build your solution for duplex systems 1/10/40G multimode or 1/10/40/100G single-mode by following the simple steps outlined below.

|   |   |  |
|---|---|--|
| <p>1</p> <p>Housings</p>                  | <p><b>Pretium EDGE® Solutions</b></p>  <p>1U up to 144 Fibres      4U up to 576 Fibres</p> | <p><b>Plug &amp; Play™ Systems</b></p>  <p>1U up to 72 Fibres      4U up to 288 Fibres</p> |
| <p>2</p> <p>Trunks</p>                    |  <p>12, 24, 48, 72, 96, and 144 Fibres</p>   |  <p>12, 24, 48, 72, 96, and 144 Fibres</p>  |
| <p>3</p> <p>MTP® to LC Duplex Modules</p> |  <p>Module 12 Fibres</p>  |  <p>Module 24 Fibres</p>   |
| <p>4</p> <p>Patch Cables</p>              |  <p>LC Duplex – LC Duplex Uniboot</p>  | <p>OR</p>  <p>SC Duplex – LC Duplex Uniboot</p>   |

# Parallel Optic Systems

Build your solution for parallel optic solutions on MTP® Base-12 Fibre Systems 1/10/40/100G multimode or 1/10/40/100G single-mode by following the simple steps outlined below.

|  |   |  |
|--|---|--|
| <p>1</p> <p>Housings</p>                               | <p><b>Pretium EDGE® Solutions</b></p>  <p>1U up to 864 Fibres      4U up to 3,456 Fibres</p> | <p><b>Plug &amp; Play™ Systems</b></p>  <p>1U up to 432 Fibres      4U up to 1,728 Fibres</p>                            |
| <p>2</p> <p>Trunks</p>                                 |  <p>12, 24, 48, 72, 96, and 144 Fibres</p>   |  <p>12, 24, 48, 72, 96, and 144 Fibres</p>  |
| <p>3</p> <p>MTP® Adapter Panels</p>                    |  <p>12, 24, and 72 Fibres Adapter Panel</p>  |  <p>72, 96, and 144 Fibres Adapter Panel</p>  |
| <p>4</p> <p>Harness Cables<br/>or<br/>Patch Cables</p> |  <p>Cisco 9000 Stagger    Brocade Stagger    Cisco 7000 Stagger    Neutral</p>              | <p>OR</p>  <p>MTP without Pin ↔ MTP without Pin<br/>MTP with Pin ↔ MTP without Pin<br/>MTP with Pin ↔ MTP with Pin</p> |

# Catalogue

## CONTENTS

- 15 Pretium EDGE®  
Universal Solutions
- 25 Pretium® Plug & Play™  
Universal Solutions
- 36 Transmission Performance  
and Insertion Loss
- 37 Fibre Channel and Ethernet  
Derating Tables
- 38 Copper Plug & Play  
Universal Solutions
- 46 Core Products  
Resources

**CORNING**

# Section CONTENTS

# FIBRE CORE PRODUCTS

FOR Data Centres

## Pretium EDGE® Universal Solutions

- 16 Pretium EDGE® Housings
- 17 Pretium EDGE Trunks
- 18 Pretium EDGE Universal Modules
- 19 Standard Pretium® Duplex Patch Cables
- 20 Pretium EDGE MTP® Adapter Panels
- 21 Standard Pretium EDGE Trunk Harness MTP  
(with pins) to 6x LC Duplex
- 22 Standard Pretium MTP Patch Cable for Parallel  
Optic Application
- 24 Standard Pretium EDGE Accessories

**CORNING**

## Pretium EDGE® Housings

Pretium EDGE® HD housings mount in 19-in racks or cabinets and provide industry-leading ultra-high-density connectivity when combined with Pretium EDGE modules, panels, harnesses, trunks, and patch cords. The unique design of Pretium EDGE HD housings include sliding drawers enabling module or panel installation from the front or rear of the housing. Each sliding drawer contains integrated cable routing elements to make real structured patch cable management possible whilst providing unprecedented finger access without the need for tools or any other accessories. The mounting and removal of trunks is a simple, quick, and tool-less operation enabling rapid deployment of high-fibre-count trunks for faster moves, adds, and changes (MACs).

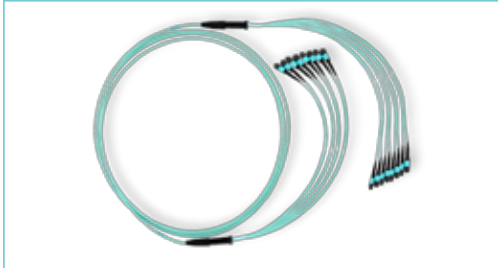


| Pretium EDGE Housings   |                                      |                                       |                  |
|---|--------------------------------------|---------------------------------------|------------------|
| Description   | Maximum Capacity Pretium EDGE Module | Maximum Capacity MTP® Panel (Base-12) | Catalogue Number |
| 19-in 4U Pretium EDGE Housing with 12 separate sliding trays    | 288 x LC duplex ports (576 fibre)    | 288 x MTP ports (3,456 fibre)         | EDGE-04U         |
| 19-in 1U Pretium EDGE Housing with three separate sliding trays | 72 x LC duplex ports (144 fibre)     | 72 x MTP ports (864 fibre)            | EDGE-01U-SP      |





Pretium EDGE® MTP® trunks are pre-terminated cables with 12-fibre MTP connectors on either side. The trunks build up the major skeleton of the passive network infrastructure, and thanks to the superior design including Corning® ClearCurve® fibres, they enable rapid deployment for your campus LAN or Data Centre facility. All trunks are shipped with strain-relief clips that allow tool-less installation in both Pretium EDGE Solutions and Plug and Play™ Systems housings.



**Order Example:**

**G757524TLZ88U023M** 24 fibre MTP-MTP OM3 Pretium EDGE trunk with Universal polarity, 840 mm legs on both ends. 23 metres long, pulling grip on End A outside the drum and protective grip on End B inside the drum

Select the trunk's length (plug-to-plug): replace xxx with 001 to 999; M = metre

| Pretium EDGE Trunks |                   |                   |                   |
|---------------------|-------------------|-------------------|-------------------|
| Fibre Type          | OM3               | OM4               | OS2               |
| Cable Colour        | Aqua              | Aqua              | Yellow            |
| Fibre Count         | Catalogue Number  | Catalogue Number  | Catalogue Number  |
| 12                  | G757512TLZ88UxxxM | G757512QLZ88UxxxM | G909012GLZ88UxxxM |
| 24                  | G757524TLZ88UxxxM | G757524QLZ88UxxxM | G909024GLZ88UxxxM |
| 48                  | G757548TLZ88UxxxM | G757548QLZ88UxxxM | On request        |
| 72                  | G757572TLZ88UxxxM | G757572QLZ88UxxxM | On request        |
| 96                  | G757596TLZ88UxxxM | G757596QLZ88UxxxM | On request        |
| 144                 | G7575E4TLZ88UxxxM | G7575E4QLZ88UxxxM | G9090E4GLZ88UxxxM |

Pretium EDGE® Universal Modules

Pretium EDGE® modules provide the interface between the MTP® connector on the trunk and the LC duplex jumpers that connect directly into the electronics or as a cross-connect in the main distribution area (MDA). The internal wiring based on universal polarity ensure the correct fibre polarity throughout the entire system independent of how many modules are implemented within the link. Specially designed indents in the shutters ensure that the end faces of the connectors are never touched. In addition, the shutters are visual fault locator (VFL) compatible allowing easy port identification whilst defusing the VFL light to provide adequate eye safety.



| Pretium EDGE Universal Modules |                  |                  |                  |                      |
|--------------------------------|------------------|------------------|------------------|----------------------|
| Fibre Type                     | OM3              | OM4              | OS2              | Fibre Type           |
| Connector Type                 | Catalogue Number | Catalogue Number | Catalogue Number | Adapter Colour Front |
| PC                             | ECM-UM12-05-93T  | ECM-UM12-05-93Q  | -                | Aqua                 |
| UPC                            | -                | -                | ECM-UM12-04-89G  | Blue                 |

Pretium EDGE® reverse polarity uniboot duplex patch cables allow for the quick and easy conversion from a TIA-568 A-B polarity to a TIA-568 A-A polarity without exposing the fibres or needing any tools. This patch cable comes with a straight-through polarity from the factory, but you can convert it to a flipped cable with no tools. This uniboot design allows one cable to carry both fibres, reducing the cable bulk when routing.

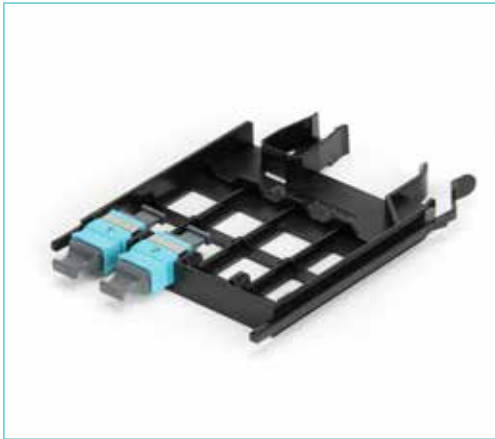


Select the patch cable length (tip-to-tip): replace NBxxxM to NB001M for 1 m up to NB020M for 20 m

| LSZH™ LC Duplex to LC Duplex Uniboot Patch Cable With Reverse Fibre Polarity Option |                         |                         |                         |                   |
|---|-------------------------|-------------------------|-------------------------|-------------------|
| Polarity  | Application             |                         | Connector               | Connector         |
| Pairwise flipped  | All                     |                         | LC Duplex Uniboot       | LC Duplex Uniboot |
| <b>Fibre Type</b>   | <b>OM3</b>              | <b>OM4</b>              | <b>OS2</b>              | <b>Fibre Type</b> |
| Cable Colour  | Aqua                    | Aqua                    | Yellow                  | Cable Colour      |
| Connector Type  | <b>Catalogue Number</b> | <b>Catalogue Number</b> | <b>Catalogue Number</b> | Connector Colour  |
| PC  | E797902TNZ20xxxM        | E797902QNZ20xxxM        |                         | Aqua              |
| UPC   |                         |                         | E787802GNZ20xxxM        | Blue              |
| LSZH SC Duplex to LC Duplex Uniboot Patch Cable With Reverse Fibre Polarity Option  |                         |                         |                         |                   |
| Pairwise Flipped  | All                     |                         | SC Duplex               | LC Duplex Uniboot |
| <b>Fibre Type</b>   | <b>OM3</b>              | <b>OM4</b>              | <b>OS2</b>              | <b>Fibre Type</b> |
| Cable Colour  | Aqua                    | Aqua                    | Yellow                  | Cable Colour      |
| Connector Type  | <b>Catalogue Number</b> | <b>Catalogue Number</b> | <b>Catalogue Number</b> | Connector Colour  |
| PC  | E577902TNZ20xxxM        | E577902QNZ20xxxM        |                         | Aqua              |
| UPC   |                         |                         | E727802GNZ20xxxM        | Blue              |

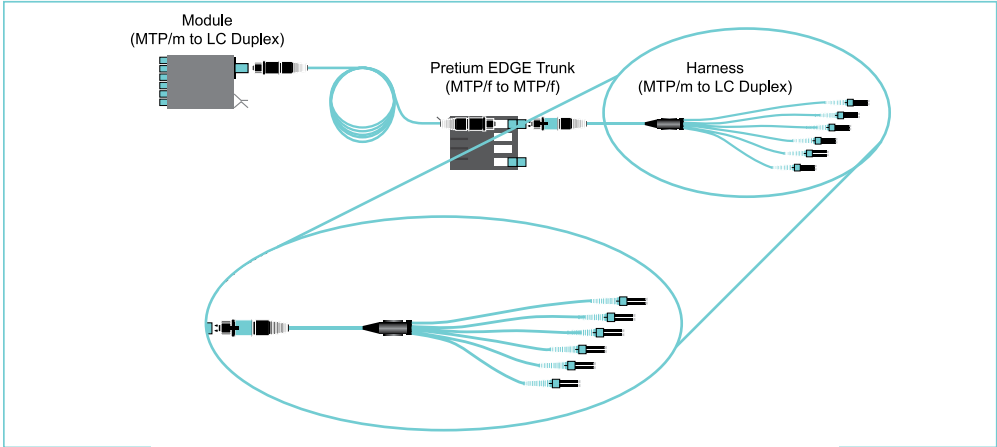
## Pretium EDGE® MTP® Adapter Panels

Pretium EDGE® adapter panels are a pass-through patch panel with a single row of MTP® adapters. The backbone trunks connect at the rear of the adapters, and then various options are possible at the front, from end-to-end links with patch cable or harness solutions, or as a cross-connect used in MDA. The MTP adapter panel is the easiest way to implement parallel optic applications in your data centre whilst retaining the existing hardware. All Pretium EDGE adapter panels can be installed from the front or the rear of any Pretium EDGE hardware using a simple release mechanism negating the need for any specialised tools.



| Pretium EDGE MTP Adapter Panels |                  |                  |                  |
|---------------------------------|------------------|------------------|------------------|
| Fibre Type                      | OM3              | OM4              | OS2              |
| MTP Adapters                    | Catalogue Number | Catalogue Number | Catalogue Number |
| 2                               | EDGE-CP24-E3     | EDGE-CP24-E3     | EDGE-CP24-90     |
| 4                               | EDGE-CP48-E3     | EDGE-CP48-E3     | EDGE-CP48-90     |
| 6                               | EDGE-CP72-U3     | EDGE-CP72-U3     | EDGE-CP72-U1     |

The Pretium EDGE® trunk harness is designed to facilitate an interconnect point when the electronics are located in a separate area to the cross-connect or patching field. The harness comes with duplex LC connectors to interface with the electronics and a pinned MTP® connector to connect into a trunk. This can be used in an equipment distribution area (EDA).



| Identification Code | Corning's harness solution provides optimised connector staggering to I/O cards from several active manufacturers | Polarity  |
|---------------------|---|-----------|
| 1                   | Cisco MDS 9513, 9509 and 9506 staggered   | Universal |
| 2                   | Brocade 48000, DCX and DCX-4S staggered   | Universal |
| 3                   | Cisco 7010 and 7018 staggered   | Universal |
| 4                   | Neutral, all legs 150 mm  | Universal |

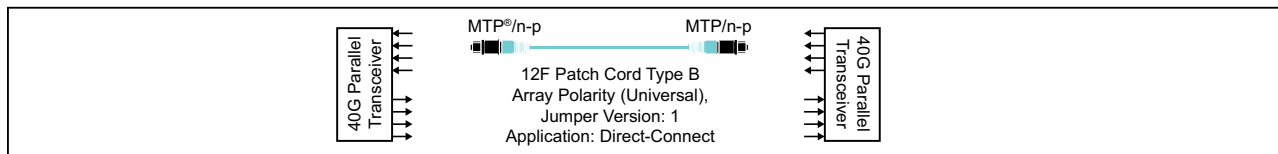
Select the harness length (tip-to-tip): Z1650 for 1650 mm or Z2700 for 2700 mm

| Fibre Type          | OM3               | OM4               | OS2               |
|---------------------|-------------------|-------------------|-------------------|
| Cable Colour        | Aqua              | Aqua              | Yellow            |
| Identification Code | Catalogue Number  | Catalogue Number  | Catalogue Number  |
| 1                   | H937912TLZ1-Zxxxx | H937912QLZ1-Zxxxx | H897812GLZ1-Zxxxx |
| 2                   | H937912TLZ2-Zxxxx | H937912QLZ2-Zxxxx | H897812GLZ2-Zxxxx |
| 3                   | H937912TLZ3-Zxxxx | H937912QLZ3-Zxxxx | H897812GLZ3-Zxxxx |
| 4                   | H937912TLZ4-Zxxxx | H937912QLZ4-Zxxxx | H897812GLZ4-Zxxxx |

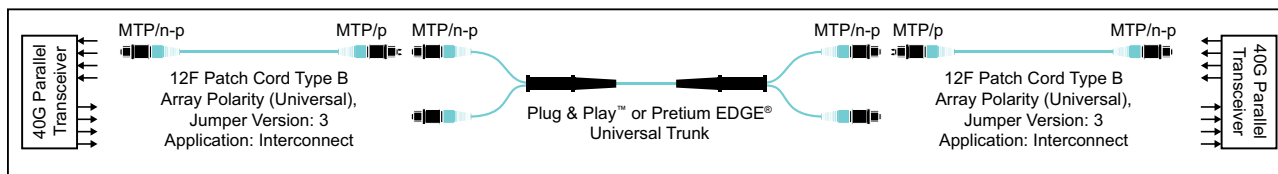
Standard Pretium EDGE® Trunk Harness MTP® (with pins) to 6x LC Duplex

# Standard Pretium® MTP® Patch Cable for Parallel Optic Application

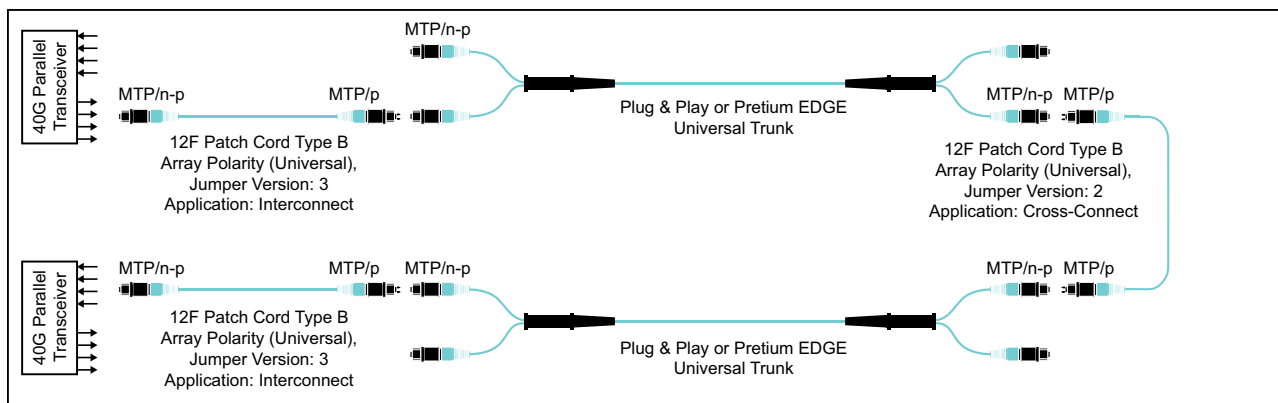
## Application: Direct-Connect



## Application: Interconnect



## Application: Interconnect and Cross-Connect



Pretium EDGE® 40G multimode patch cables allow for the seamless migration to higher data rates in the data centre when used in conjunction with our universal trunks. This patch cable is based around pinned or non-pinned 12-fibre MTP® connectors. Pictured here are the most common applications for this type of patch cables to make ordering easier. All listed patch cables have a TIA-568 Type-B polarity.

### Which polarity and configuration MTP patch cable do I need for my 40 Gigabit network?

When deploying MTP patch cable, the following applications and scenarios should be considered:

- Direct-connect: Connection between active parallel optic devices
- Interconnect: Connection from device to patch panel
- Cross-connect: Connection from patch panels to patch panel

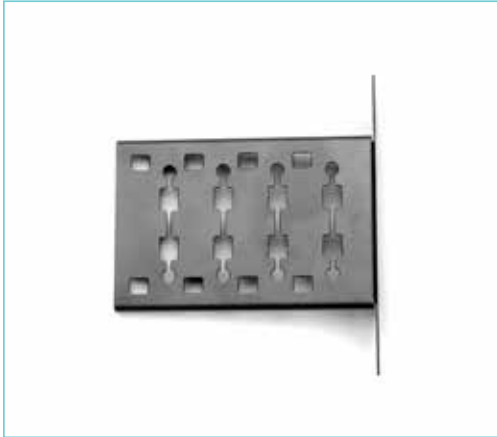
| Jumper Type | Application    | Pin Option                   | To be Used with Trunk | Patch Cable Polarity |
|-------------|----------------|------------------------------|-----------------------|----------------------|
| 1           | Direct-connect | Without pins to without pins | Type B (Universal)    |                      |
| 2           | Cross-connect  | With pins to with pins       | Type B (Universal)    | Type B (Universal)   |
| 4           | Interconnect   | With pins to without pins    | Type A (Straight)     | Type B (Universal)   |



Select the patch cable length (tip-to-tip): replace NBxxxM to NB001M for 1 m up to NB020M for 20 m

| Fibre Type   | OM3               | OM4               | OS2               | Fibre Type   |
|--------------|-------------------|-------------------|-------------------|--------------|
| Cable Colour | Aqua              | Aqua              | Yellow            | Cable Colour |
| Jumper Type  | Catalogue Number  | Catalogue Number  | Catalogue Number  | Length       |
| 1            | J757512TEZ-NBxxxM | J757512QEZ-NBxxxM | J909012GEZ-NBxxxM | 1 up to 20 m |
| 2            | J939312TEZ-NBxxxM | J939312QEZ-NBxxxM | J898912GEZ-NBxxxM | 1 up to 20 m |
| 4            | J759312TEZ-NBxxxM | J759312QEZ-NBxxxM | J899012GEZ-NBxxxM | 1 up to 20 m |

Standard Pretium EDGE® Accessories



| Description  | Description   | Description                                   |
|--|---|---|
| Pretium EDGE® Solutions Strain-Relief Bracket, CDF, accommodating four Pretium EDGE Solutions clip | Single-fibre Port Cleaner for LC, keyed LC and MU connector end faces for both UPC and APC polishes | Fibre Optic Cleaning Tool for MTP® connectors |
| <b>Catalogue Number</b>  | <b>Catalogue Number</b>   | <b>Catalogue Number</b>                       |
| EDGE-CDF-RJ04-BKT  | CLEANER-PORT-LC   | 2104466-01                                    |
| <b>Units Per Delivery</b>  | <b>Units Per Delivery</b>   | <b>Units Per Delivery</b>                     |
| 1/1  | 1/1   | 1/1   |



# Section CONTENTS

# FIBRE CORE PRODUCTS

FOR Data Centres

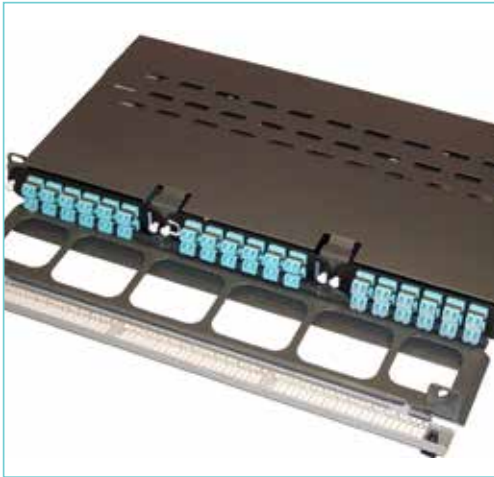
## Pretium Plug & Play™ Universal Solutions

- 26 PCH Plug & Play™ Housings
- 27 Pretium® Plug & Play Trunks
- 28 Pretium Plug & Play Universal Modules
- 29 Standard Pretium Duplex Patch Cables
- 30 Pretium Plug & Play Adapter Panels
- 31 Standard Pretium Plug & Play Trunk Harness MTP® (with pins) to 6x LC Duplex
- 32 Standard Pretium Plug & Play MTP Patch Cable for Parallel Optic Application
- 34 Standard Pretium Plug & Play Accessories

CORNING

## PCH Plug & Play™ Housings

PCH Plug & Play™ housings mount in 19-in racks or cabinets and provide industry-leading density connectivity when combined with Pretium® Plug & Play modules, panels, harnesses, trunks, and patch cords. The housings enable quick deployment of module or panel in the housing. The design of the PCH-M3-01U contains a sliding drawer with integrated patch cable protection and a labelling element on the rear side of the front door. The PCH-04U housing contains an integral hinged jumper manager on the front which can be locked in the “up” position for an additional 1U of horizontal jumper management or left in the default “down” position to provide additional capacity for jumper routing along the top of the housing. Mounting and removal of trunks in both housings is a simple, quick, and tool-less operation enabling rapid deployment. Additional mounting brackets for trunks are shown on the accessory page.



### PCH Plug & Play Housings

| Description  | Maximum Capacity Plug & Play Module  | Maximum Capacity MTP® Panel (Base-12) | Catalogue Number  |
|--|--------------------------------------|---------------------------------------|-------------------|
| 19-in 4U Pretium Plug & Play Housing for up to 12 Plug & Play modules or CCHE adapter panels | 144 x LC Duplex ports<br>(288 fibre) | 144 x MTP ports<br>(1,728 fibre)      | <b>PCH-04U</b>    |
| 19-in 1U Pretium Plug & Play Housing for up to 3 Plug & Play modules or CCHE adapter panels  | 36 x LC Duplex ports<br>(72 fibre)   | 36 x MTP ports<br>(432 fibre)         | <b>PCH-M3-01U</b> |

Pretium® Plug & Play™ MTP® trunks are pre-terminated cables with 12-fibre MTP connectors on either side. The trunks build up the major skeleton of the passive network infrastructure, and thanks to the superior design including Corning® ClearCurve® fibres, they enable rapid deployment for your campus LAN or data centre facility. All trunks are shipped with strain-relief clips that allow for the tool-less installation in Pretium PCH Plug and Play Systems housings.



**Order Example:**

**A696924TDZAA023M** 24-fibre MTP-MTP OM3 Plug & Play trunk with Universal polarity, 600 mm legs on both ends. 23 m long, pulling grip on End A outside the drum, and protective grip on End B.

Select the trunk's length (plug-to-plug): replace YYY with 001 to 999; M = metre

| Pretium Plug & Play Trunks |                  |                  |                  |
|----------------------------|------------------|------------------|------------------|
| Fibre Type                 | OM3              | OM4              | OS2              |
| Cable Colour               | Aqua             | Aqua             | Yellow           |
| Fibre Count                | Catalogue Number | Catalogue Number | Catalogue Number |
| 12                         | A696912TDZAAUYYM | A696912QDZAAUYYM | A909012RDZAAUYYM |
| 24                         | A696924TDZAAUYYM | A696924QDZAAUYYM | A909024RDZAAUYYM |
| 48                         | A696948TUZAAUYYM | A696948QUZAAUYYM | On request       |
| 72                         | A696972TUZAAUYYM | A696972QUZAAUYYM | On request       |
| 96                         | A696996TUZAAUYYM | A696996QUZAAUYYM | On request       |
| 144                        | A6969E4TUZAAUYYM | A6969E4QUZAAUYYM | A9090E4RDZAAUYYM |

## Pretium® Plug & Play™ Universal Modules

Pretium® Plug & Play™ modules provide the interface between the MTP® connector on the trunk and the LC duplex jumpers that connect directly into the electronics or as a cross-connect in the main distribution area (MDA). The internal wiring based on universal polarity ensures the correct fibre polarity throughout the entire system independent of how many modules are implemented within the link. Specially designed indents in the shutters ensure that the end faces of the connectors are never touched. In addition, the shutters are visual fault locator (VFL) compatible allowing easy port identification whilst defusing the VFL light to provide adequate eye safety.



| Pretium Plug & Play Universal Modules |                  |                  |                  |                      |
|---------------------------------------|------------------|------------------|------------------|----------------------|
| Fibre Type                            | OM3              | OM4              | OM2              | Fibre Type           |
| Connector Type                        | Catalogue Number | Catalogue Number | Catalogue Number | Adapter Colour Front |
| PC                                    | CCH-UM24-05-93T  | CCH-UM24-05-93Q  | -                | Aqua                 |
| UPC                                   | -                | -                | CCH-UM24-04-89R  | Blue                 |

Pretium® reverse polarity uniboot duplex patch cables allow for the quick and easy conversion from a TIA-568 A-B polarity to a TIA-568 A-A polarity without exposing the fibres or needing any tools. This patch cable comes with a straight-through polarity from the factory, but you can convert it to a flipped cable with no tools. This uniboot design allows one cable to carry both fibres, reducing the cable bulk when routing.



Select the patch cable length (tip-to-tip): replace NBxxxM to NB001M for 1 m up to NB020M for 20 m

| LSZH™ LC Duplex to LC Duplex Uniboot Patch Cable With Reverse Fibre Polarity Option |                         |                         |                         |                   |
|---|-------------------------|-------------------------|-------------------------|-------------------|
|   | Polarity                | Application             | Connector               | Connector         |
|   | Pairwise Flipped        | All                     | LC Duplex Uniboot       | LC Duplex Uniboot |
| <b>Fibre Type</b>   | <b>OM3</b>              | <b>OM4</b>              | <b>OS2</b>              | <b>Fibre Type</b> |
| Cable Colour  | Aqua                    | Aqua                    | Yellow                  | Cable Colour      |
| Connector Type  | <b>Catalogue Number</b> | <b>Catalogue Number</b> | <b>Catalogue Number</b> | Connector Colour  |
| PC  | E797902TNZ20xxxM        | E797902QNZ20xxxM        |                         | Aqua              |
| UPC   |                         |                         | E787802GNZ20xxxM        | Blue              |
| LSZH SC Duplex to LC Duplex Uniboot Patch Cable with Reverse Fibre Polarity Option  |                         |                         |                         |                   |
|   | Pairwise Flipped        | All                     | SC Duplex               | LC Duplex Uniboot |
| <b>Fibre Type</b>   | <b>OM3</b>              | <b>OM4</b>              | <b>OS2</b>              | <b>Fibre Type</b> |
| Cable Colour  | Aqua                    | Aqua                    | Yellow                  | Cable Colour      |
| Connector Type  | <b>Catalogue Number</b> | <b>Catalogue Number</b> | <b>Catalogue Number</b> | Connector Colour  |
| PC  | E577902TNZ20xxxM        | E577902QNZ20xxxM        |                         | Aqua              |
| UPC   |                         |                         | E727802GNZ20xxxM        | Blue              |

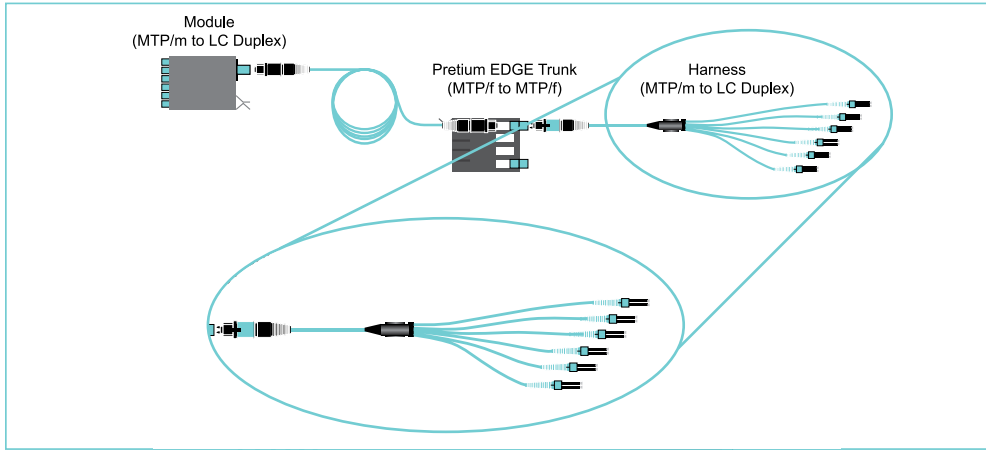
## Pretium® Plug & Play™ Adapter Panels

Pretium EDGE® adapter panels are a pass-through patch panel with a single row of MTP® adapters. The backbone trunks connect at the rear of the adapters, and then various options are possible at the front, from end-to-end links with patch cable or harness solutions, or as a cross-connect used in MDA. The MTP adapter panel is the easiest way to implement parallel optic applications in your data centre whilst retaining the existing hardware. All Pretium® Plug & Play™ adapter panels can be installed from the front or the rear of any Pretium Plug & Play hardware using a simple release mechanism negating the need for any specialised tools.



| Pretium Plug & Play Adapter Panels |                  |                  |                  |
|------------------------------------|------------------|------------------|------------------|
| Fibre Type                         | OM3              | OM4              | OM2              |
| Connector Type                     | Catalogue Number | Catalogue Number | Catalogue Number |
| 6x MTP                             | CCHE-CP72-E3     | CCHE-CP72-E3     | CCHE-CP72-89     |
| 8x MTP                             | CCHE-CP96-E3     | CCHE-CP96-E3     | CCHE-CP96-89     |
| 12x MTP                            | CCHE-CPE4-E3     | CCHE-CPE4-E3     | CCHE-CPE4-89     |
| 12 LC Duplex                       | CCHE-CP24-E4     | CCHE-CP24-E4     | CCHE-CP24-04     |

The Pretium® Plug & Play™ trunk harness is designed to facilitate an interconnect point when the electronics are located in a separate area to the cross-connect or patching field. The harness comes with duplex LC connectors to interface with the electronics and a pinned MTP® connector to connect into a trunk. This can be used in an equipment distribution area (EDA).

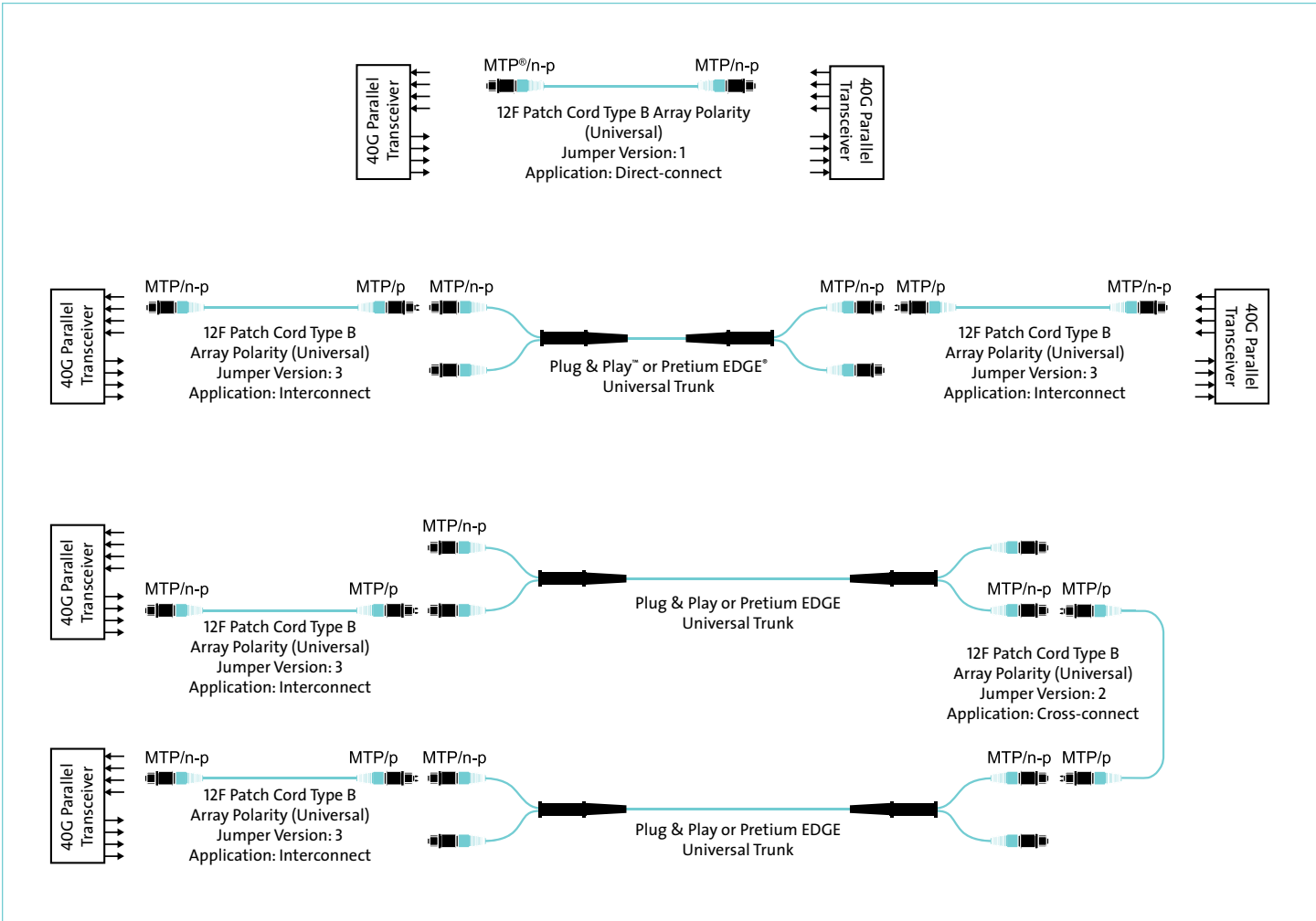


| Identification Code | Corning's harness solution provides optimised connector staggering to I/O cards from several active manufacturers | Polarity  |
|---------------------|---|-----------|
| 1                   | Cisco MDS 9513, 9509, and 9506 staggered  | Universal |
| 2                   | Brocade 48000, DCX, and DCX-4S staggered  | Universal |
| 3                   | Cisco 7010 and 7018 staggered   | Universal |
| 4                   | Neutral, all legs 150 mm  | Universal |

Select the harness length (tip-to-tip): Z1650 for 1650 mm or Z2700 for 2700 mm

| Fibre Type          | OM3               | OM4               | OS2               |
|---------------------|-------------------|-------------------|-------------------|
| Cable Colour        | Aqua              | Aqua              | Yellow            |
| Identification Code | Catalogue Number  | Catalogue Number  | Catalogue Number  |
| 1                   | H937912TLZ1-Zxxxx | H937912QLZ1-Zxxxx | H897812GLZ1-Zxxxx |
| 2                   | H937912TLZ2-Zxxxx | H937912QLZ2-Zxxxx | H897812GLZ2-Zxxxx |
| 3                   | H937912TLZ3-Zxxxx | H937912QLZ3-Zxxxx | H897812GLZ3-Zxxxx |
| 4                   | H937912TLZ4-Zxxxx | H937912QLZ4-Zxxxx | H897812GLZ4-Zxxxx |

Standard Pretium® Plug & Play™ MTP® Patch Cable for Parallel Optic Application





Pretium EDGE® 40G multimode patch cables allow for the seamless migration to higher data rates in the data centre when used in conjunction with our universal trunks. This patch cable is based around pinned or non-pinned 12-fibre MTP® connectors. Pictured here are the most common applications for this type of patch cables to make ordering easier. All listed patch cables have a TIA-568 Type-B polarity.

### Which polarity and configuration MTP patch cable do I need for my 40 Gigabit network?

When deploying MTP patch cable, the following applications and scenarios should be considered:

- Direct-connect: Connection between active parallel optic devices
- Interconnect: Connection from device to patch panel
- Cross-connect: Connection from patch panel to patch panel

| Jumper Type | Application    | Pin Option                   | To be Used with Trunk | Patch Cable Polarity |
|-------------|----------------|------------------------------|-----------------------|----------------------|
| 1           | Direct-connect | Without pins to without pins | Type B (Universal)    |                      |
| 2           | Cross-connect  | With pins to with pins       | Type B (Universal)    | Type B (Universal)   |
| 4           | Interconnect   | With pins to without pins    | Type A (Straight)     | Type B (Universal)   |



Select the patch cable length (tip-to-tip): replace NBxxxM to NB001M for 1 m up to NB020M for 20 m

| Fibre Type   | OM3               | OM4               | OS2               | Fibre Type   |
|--------------|-------------------|-------------------|-------------------|--------------|
| Cable Colour | Aqua              | Aqua              | Yellow            | Cable Colour |
| Jumper Type  | Catalogue Number  | Catalogue Number  | Catalogue Number  | Length       |
| 1            | J757512TEZ-NBxxxM | J757512QEZ-NBxxxM | J909012GEZ-NBxxxM | 1 up to 20 m |
| 2            | J939312TEZ-NBxxxM | J939312QEZ-NBxxxM | J898912GEZ-NBxxxM | 1 up to 20 m |
| 4            | J759312TEZ-NBxxxM | J759312QEZ-NBxxxM | J899012GEZ-NBxxxM | 1 up to 20 m |

## Standard Pretium® Plug & Play™ Accessories



| Description   | Description  | Description                                   |
|---|--|---|
| Pretium® Plug & Play™ Solutions Bracket for side installation, accommodating up to two Pretium CCH-modules or CCHE-panels | Single-fibre Port Cleaner for LC, keyed LC, and MU connector end faces for both UPC and APC polishes | Fibre Optic Cleaning Tool for MTP® connectors |
| <b>Catalogue Number</b>   | <b>Catalogue Number</b>  | <b>Catalogue Number</b>                       |
| RBC-02P   | CLEANER-PORT-LC  | 2104466-01                                    |
| <b>Units Per Delivery</b>   | <b>Units Per Delivery</b>  | <b>Units Per Delivery</b>                     |
| 1/1   | 1/1  | 1/1   |



| Description  | Description  | Description   |
|--|--|---|
| Pretium Plug & Play Solutions Strain-Relief Bracket for PCH-4U housings, accommodating up to three Pretium Plug & Play Solutions clips | Pretium Plug & Play Solutions Strain-Relief Bracket, accommodating up to six Pretium Plug & Play Solutions clips | Pretium Plug & Play Solutions Strain-Relief Bracket, accommodating one Pretium Plug & Play Solutions clip |
| <b>Catalogue Number</b>  | <b>Catalogue Number</b>  | <b>Catalogue Number</b>   |
| PC4-RJ04-STR   | CDF-RJ06-BKT   | CDF-RJ-BKT  |
| <b>Units Per Delivery</b>  | <b>Units Per Delivery</b>  | <b>Units Per Delivery</b>   |
| 1/1  | 1/1  | 1/1   |

## Pretium EDGE® and Plug & Play™ Online Test Results

To view test reports for your Plug and Play™ Universal Systems and Pretium EDGE® Solutions equipment, please visit:  
<https://customer3.corning.com/ftoedge/default.aspx>  
Simply follow the instructions as shown on the screen shot below.

# CORNING

## Fibre Test and Orientation Reporting

To view test reports of Plug & Play™ Universal Systems and Pretium EDGE® Solutions modules, trunks, harnesses, and uniboot jumpers:

1. Locate the serial number on the product. To see where this is located, click [here](#).
2. Type the serial number in the search bar and click Search. Your report will be provided in PDF format.
3. Having problems finding your results? Try these [troubleshooting tips](#).

Serial Number:

Search

Reset

# Transmission Performance/Insertion Loss

|  | OM3/OM4      | OS2         |
|--|--------------|-------------|
| Optical Fibre Type (µm)                          | 50 Multimode | Single-mode |
| Wavelength (nm)                                  | 850          | 1310/1550   |
| Maximum Attenuation (dB/km)                      | 2.8          | 0.4/0.3     |
| Minimum Effective Modal Bandwidth (EMB) (MHz•km) | 2000/4700    | - / -       |

| Insertion Loss (dB) Max      | OM3/OM4 | OS2  |
|------------------------------|---------|------|
| <b>Connected Mated Pairs</b> |         |      |
| LC                           | 0.15    | 0.5  |
| MTP® connector               | 0.35    | 0.75 |
| <b>Modules/Harnesses</b>     | 0.5     | 1.25 |

| Ethernet Data Rate | Nomenclature  | Fibre Type | Maximum Channel Insertion Loss (dB) | Maximum Link Length (m) |
|--------------------|---------------|------------|-------------------------------------|-------------------------|
| 1G                 | 1000BASE-SX   | OM3        | 4.5                                 | 1000                    |
| 10G                | 10GBASE-SR    | OM3/OM4    | 2.6/2.34                            | 300/550                 |
| 40G                | 40GBASE-SR4   | OM3/OM4    | 1.9/1.5                             | 100/150                 |
| 100G               | 100GBASE-SR10 | OM3/OM4    | 1.9/1.5                             | 100/150                 |

| Fibre Channel Data Rate | Nomenclature  | Fibre Type | Maximum Channel Insertion Loss (dB) | Maximum Link Length (m) |
|-------------------------|---------------|------------|-------------------------------------|-------------------------|
| 4 Gb/s                  | 400-M5E-SN-1  | OM3        | 2.88                                | 380                     |
|                         | 400-M5F-SN-1  | OM4        | 3.02                                | 420                     |
| 8 Gb/s                  | 800-M5E-SN-1  | OM3        | 2.19                                | 150                     |
|                         | 800-M5F-SN-1  | OM4        | 2.22                                | 190                     |
| 16 Gb/s                 | 1600-M5E-SN-1 | OM3        | 1.95                                | 100                     |
|                         | 1600-M5F-SN-1 | OM4        | 1.97                                | 125                     |

**4G, 8G, 10G, and 16G Fibre Channel Distance Capability and Channel Insertion Loss**  
**12 Fibre MTP® Connectivity**

| LANscape® Solutions Cabled Fibre | Data Rate Gb/s | Number of MTP® Connections<br>Distance (m)/Channel Insertion Loss (dB) |          |          |          |          |
|----------------------------------|----------------|--|----------|----------|----------|----------|
|                                  |                | 2  | 3        | 4        | 5        | 6        |
| Laser-optimised 50/125 µm OM3    | 4              | 500/2.27   | 480/2.43 | 440/2.62 | 420/2.78 | 380/3.04 |
|                                  | 8              | 215/1.40   | 205/1.62 | 190/1.91 | 180/2.08 | 165/2.32 |
|                                  | 10             | 320/3.01   | 320/3.01 | 320/2.85 | 320/2.85 | 320/2.85 |
|                                  | 16             | 140/1.17   | 130/1.45 | 115/1.65 | 100/1.95 | 90/2.11  |
| Laser-optimised 50/125 µm OM4    | 4              | 600/2.64   | 580/2.78 | 540/2.86 | 500/3.08 | 480/3.18 |
|                                  | 8              | 270/1.59   | 260/1.77 | 235/2.00 | 220/2.20 | 205/2.38 |
|                                  | 10             | 500/2.27   | 490/2.56 | 470/2.85 | 460/3.09 | 460/3.09 |
|                                  | 16             | 185/1.38   | 175/1.59 | 155/1.78 | 140/2.00 | 125/2.18 |

**1G, 10G, 40G, and 100G Ethernet Distance Capability and Channel Insertion Loss**  
**12 Fibre MTP Connectivity**

| LANscape Solutions Cabled Fibre | Data Rate Gb/s | Number of MTP Connections<br>Distance (m)/Channel Insertion loss (dB) |           |           |           |           |
|---------------------------------|----------------|---|-----------|-----------|-----------|-----------|
|                                 |                | 2   | 3         | 4         | 5         | 6         |
| Laser-optimised 50/125 µm OM3   | 1              | 1100/4.14   | 1000/4.68 | 1000/4.68 | 1000/4.68 | 950/4.89  |
|                                 | 10             | 320/3.01  | 320/3.01  | 320/2.85  | 320/2.85  | 320/2.85  |
|                                 | 40/100         | 150/1.18  | 140/1.44  | 120/1.65  | 105/1.88  | 90/2.09   |
| Laser-optimised 50/125 µm OM4   | 1              | 1100/4.51   | 1100/4.51 | 1050/4.76 | 1050/4.76 | 1000/4.97 |
|                                 | 10             | 500/2.27  | 490/2.56  | 470/2.85  | 460/3.09  | 460/3.09  |
|                                 | 40/100         | 185/1.56  | 170/1.82  | 135/2.02  | 125/2.12  | 115/2.20  |



Enterprise Networks EMEA

# Copper Core Products

FOR **DATA CENTRES**

Don't see what you're looking for? Visit:  
[www.corning.com/opcomm/emea](http://www.corning.com/opcomm/emea)

CORNING

# Section CONTENTS

# COPPER CORE PRODUCTS FOR Data Centres

- 40 Copper Panels
- 41 Copper Plug & Play™
- 42 Copper Modules
- 43 Copper Cables
- 44 Copper Patch Cords
- 45 Copper Cable Management,  
Tools, and Consumables

**CORNING**

## Copper Panels

The FutureCom™ patch panels are universal for all 19-in cabinet installations available in black or stainless steel and is intended for flush-mounting installations. This concept allows free choice of application in your data centre with high density. The installation of the module in the panel is quick and easy by simply clicking it into place.



### Data Centre Hardware

| Description   | Colour | Maximum Capacity | Rack Units | Catalogue Number  |
|---|--------|------------------|------------|-------------------|
| 19-in LANscape® Solutions Panel, empty                    | Silver | 24 x slots       | 1U         | WAXWSV-02400-C001 |
| 19-in LANscape Solutions Panel, empty                     | Black  | 24 x slots       | 1U         | WAXWSV-02408-C001 |
| 19-in Angled LANscape Solutions Panel, empty              | Silver | 24 x slots       | 1U         | WAXWOV-02400-C001 |
| 19-in Angled LANscape Solutions Panel, empty              | Black  | 24 x slots       | 1U         | WAXWOV-02408-C001 |
| 19-in High-density LANscape Solutions Panel, empty        | Silver | 48 x slots       | 1U         | CAXASV-04800-C001 |
| 19-in High-density LANscape Solutions Panel, empty        | Black  | 48 x slots       | 1U         | CAXASV-04808-C001 |
| 19-in High-density Angled LANscape Solutions Panel, empty | Silver | 48 x slots       | 1,5U       | WAXWOV-04800-C001 |
| 19-in High-density Angled LANscape Solutions Panel, empty | Black  | 48 x slots       | 1,5U       | WAXWOV-04808-C001 |





The FutureCom™ EA Plug & Play™ cabling solution is terminated with modules or connectors and is specified for applications up to 500 MHz. The combination of high-end copper cable with pre-terminated connectivity guarantees high-system margins for the complete cable link according to Class EA. The advantages of a preassembled system cable are reduced assembly costs, reduced installation time, and the elimination of assembly mistakes as well as the guarantee of consistent superior quality.



| FutureCom EA 6-Way Plug & Play Trunks |       |                             |   |  |        |        |          |
|---------------------------------------|-------|-----------------------------|---|--|--------|--------|----------|
| Solution                              | Links | Catalogue Number            | Description   | Core Characteristics   | Side A | Side B | Category |
| EA Trunk                              | 6     | <b>CCAADA-F2673-A150-C0</b> | FutureCom EA Plug & Play Solution, Cat. 6A  | FRNC   | S500   | S500   | 6A       |
| <b>EXAMPLE</b>                        | 6     | <b>CCAADA-F2673-A150-C0</b> | FutureCom EA, 6-way, Cat. 6A, Plug & Play, trunk. 6 x 4 pair with overall LSZH™ sheath, both ends terminated with S500 Cat. 6A modules, 15 m long                                   | Highest flexibility<br>Smallest diameter<br>Lowest fire rate |        |        |          |
| EA Trunk                              | 6     | <b>CCAADB-F2673-A150-EN</b> | FutureCom EA Plug & Play Solution, Cat. 6A  | FRNC   | S500   | S500   | 6A       |
| <b>EXAMPLE</b>                        | 6     | <b>CCAADB-F2673-A150-EN</b> | FutureCom EA, 6-way, S/FTP, Cat. 6A, Plug & Play trunk. 6 x 4 pair S/FTP individual cables bound with overall nylon yarn, both ends terminated with S500 Cat. 6A modules, 15 m long | Good flexibility<br>Small diameter<br>Low fire rate          |        |        |          |

| FutureCom EA Simplex Plug & Play Trunks |       |                             |   |                                   |        |        |          |
|---|-------|-----------------------------|---|-----------------------------------|--------|--------|----------|
| Solution                                | Links | Catalogue Number            | Description   | Core Characteristics              | Side A | Side B | Category |
| EA Trunk                                | 1     | <b>CCAADB-F2073-A150-C0</b> | FutureCom EA Plug & Play Solution, Cat. 6A  | FRNC                              | S500   | S500   | 6A       |
| <b>EXAMPLE</b>                          | 1     | <b>CCAADB-F2073-A150-C0</b> | FutureCom EA, simplex, S/FTP, Cat. 6A, Plug & Play trunk. Single S/FTP, both ends terminated with S500 Cat. 6A modules, 15 m long   | Good flexibility<br>Low fire rate |        |        |          |
| EA Trunk                                | 1     | <b>CCAAGB-F1072-A050-C0</b> | FutureCom EA Plug & Play Solution, Cat. 6A  | FRNC                              | S500   | RJ-45  | 6A       |
| <b>EXAMPLE</b>                          | 1     | <b>CCAAGB-F1072-A050-C0</b> | FutureCom EA, simplex, flex S/FTP, Cat. 6A, Plug & Play trunk. Single flex S/FTP cable (high flexibility patch cord cable), one end terminated with an S500 Cat. 6A module and the other with an RJ-45 jack | High flexibility<br>Low fire rate |        |        |          |

## Copper Modules

EMEA Data Centre Core Products

42

The FutureCom™ EA cabling solution is based on the S500 Module offering high-system margins for the transmission of digital data signals, compliant with Class EA and is fully supported by power-over-Ethernet Plus (PoE+). The integrated, flexible dust cover may be easily removed, if desired and serves as protection for unused ports. Different cable routing for various installation challenges is possible with the variable cable entry for 0 degrees and 90 degrees.



### Copper Termination Modules

| Solution     | Type | Description   | Category | Catalogue Number  |
|--------------|------|---|----------|-------------------|
| FutureCom EA | S500 | Corning FutureCom EA S500 Cat. 6A Module, 1 x RJ-45 Cat. 6A, shielded, with dust cover, LANscape® Solutions footprint                     | 6A       | CAXASM-00104-C001 |
| FutureCom EA | S500 | Corning FutureCom EA S500 Cat. 6A Flex Module, 1 x RJ-45 Cat. 6A, shielded, with dust cover, for flex cable, LANscape Solutions footprint | 6A       | CAXASM-00104-C002 |
| FutureCom EA | S500 | Corning FutureCom EA S500 Cat. 6A Keystone Module, 1 x RJ-45 Cat. 6A, shielded, with dust cover, Keystone footprint                       | 6A       | CAXBSM-00104-C001 |
| FutureCom EA | S500 | Corning FutureCom EA S500 Cat. 6A Keystone Flex Module, 1 x RJ-45 Cat. 6A, shielded, with dust cover, for flex cable, Keystone footprint  | 6A       | CAXBSM-00104-C002 |

FutureCom™ cables are low-skew products, i.e. the difference in propagation delay between the individual pairs is very low. This is increasingly being requested for 1/10 Gigabit Ethernet. The suitability of the cable for high-bit-rate transmission systems ensures a high degree of future readiness. Additional features are the slim design and low weight of the cables. Each pair is individually shielded with foil (Foil Twisted Pair – FTP).



| Data Centre Cable |       |  |             |          |                      |  |
|-------------------|-------|--|-------------|----------|----------------------|--|
| Solution          | Type  | Description  | Reel Length | Category | Catalogue Number     |  |
| FutureCom EA      | S/FTP | FutureCom EA, S/FTP 550/23, LSOH-3 cable: 550 MHz, AWG 23, 4 pairs, blue, FRNC   | 1000 m      | 6A       | CCXEDR-D0047-C003-L7 |  |
| FutureCom F       | S/FTP | FutureCom F, S/FTP 800/23, LSOH-3 cable: 800 MHz, AWG 23, 4 pairs, blue, FRNC    | 1000 m      | 7        | CCXEDB-F0047-C001-L7 |  |
| FutureCom FA      | S/FTP | FutureCom FA, S/FTP 1200/22, LSOH-3 cable: 1200 MHz, AWG 22, 4 pairs, blue, FRNC | 1000 m      | 8        | CCXFCB-L0047-C001-L7 |  |

## Copper Patch Cords

The FutureCom™ EA S/FTP flex/26 patch cord is terminated with IEC 60603-7-51 standards-compliant RJ-45 connectors. The patch cords are designed for the transmission of digital data signals including future applications in 10GbE systems compliant with Class EA (ISO/IEC 11801 AMD: 1 2008 & AMD: 2 2010), Cat. 6A (ANSI/TIA/EIA 568B.2-10) and IEEE 802.3an standards. The patch cords support power-over-Ethernet (PoE) applications in compliance with IEEE 802.3af (2003) and power-over-Ethernet plus (PoE+).



CCAAGB-G1002



CCAAGB-G2002

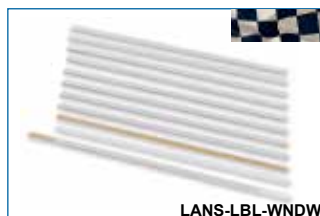


| Data Centre Copper Patch Cords: CAT 6A |          |         |      |         |     |     |     |     |      |   |                      |
|--|----------|---------|------|---------|-----|-----|-----|-----|------|---|----------------------|
| Performance                            |          | Colours |      | Lengths |     |     |     |     |      |   |                      |
| Class E                                | Class EA | Grey    | Blue | 1 m     | 2 m | 3 m | 4 m | 5 m | 10 m | Description   | Catalogue Number     |
|  |          |         |      | ■       |     |     |     |     |      | 1 m Cat. 6A Shielded Copper Patch Cord (RJ-45-RJ-45), grey  | CCAAGB-G1002-A010-C0 |
|  |          |         |      |         | ■   |     |     |     |      | 2 m Cat. 6A Shielded Copper Patch Cord (RJ-45-RJ-45), grey  | CCAAGB-G1002-A020-C0 |
|  |          |         |      |         |     | ■   |     |     |      | 3 m Cat. 6A Shielded Copper Patch Cord (RJ-45-RJ-45), grey  | CCAAGB-G1002-A030-C0 |
|  |          |         |      |         |     |     | ■   |     |      | 4 m Cat. 6A Shielded Copper Patch Cord (RJ-45-RJ-45), grey  | CCAAGB-G1002-A040-C0 |
|  |          |         |      |         |     |     |     | ■   |      | 5 m Cat. 6A Shielded Copper Patch Cord (RJ-45-RJ-45), grey  | CCAAGB-G1002-A050-C0 |
|  |          |         |      |         |     |     |     |     | ■    | 10 m Cat. 6A Shielded Copper Patch Cord (RJ-45-RJ-45), grey | CCAAGB-G1002-A100-C0 |
|  |          |         | ■    | ■       |     |     |     |     |      | 1 m Cat. 6A Shielded Copper Patch Cord (RJ-45-RJ-45), blue  | CCAAGB-G2002-A010-C0 |
|  |          |         | ■    |         | ■   |     |     |     |      | 2 m Cat. 6A Shielded Copper Patch Cord (RJ-45-RJ-45), blue  | CCAAGB-G2002-A020-C0 |
|  |          |         | ■    |         |     | ■   |     |     |      | 3 m Cat. 6A Shielded Copper Patch Cord (RJ-45-RJ-45), blue  | CCAAGB-G2002-A030-C0 |
|  |          |         | ■    |         |     |     | ■   |     |      | 4 m Cat. 6A Shielded Copper Patch Cord (RJ-45-RJ-45), blue  | CCAAGB-G2002-A040-C0 |
|  |          |         | ■    |         |     |     |     | ■   |      | 5 m Cat. 6A Shielded Copper Patch Cord (RJ-45-RJ-45), blue  | CCAAGB-G2002-A050-C0 |
|  |          |         | ■    |         |     |     |     |     | ■    | 10 m Cat. 6A Shielded Copper Patch Cord (RJ-45-RJ-45), blue | CCAAGB-G2002-A100-C0 |

Additional colours and lengths available upon request.

| Description   | Catalogue Number  |
|---|-------------------|
| <b>Copper Cable Management</b>                                      |                   |
| 1U Patch Cable Management Panel, black                              | WAXWSW-00008-C007 |
| 1U Patch Cable Guides (left and right), black                       | WAXWSW-00008-C006 |
| 1.5U Patch Cable Guides (left and right), black                     | WAXWSW-00008-C010 |
| 1U Patch Cable Management Panel, silver                             | WAXWSW-00000-C007 |
| 1U Patch Cable Guides (left and right), silver                      | WAXWSW-00000-C006 |
| 1.5U Patch Cable Guides (left and right), silver                    | WAXWSW-00000-C010 |
| Self-adhesive Labeling Windows, including paper strips (pack of 10) | LANS-LBL-WNDW     |

| Description  | Catalogue Number  |
|--|-------------------|
| <b>Copper Tools and Consumables</b>                    |                   |
| Assembly Tool for all FutureCom™ copper jacks          | CAXCSN-00000-C010 |
| Copper Conducting Tape (needed for S10TENE/S500 jacks) | CAXCSN-00000-C011 |
| Release Tool For FutureCom modules                     | CAXCSN-00000-C012 |
| Cable Sheath Cutting Tool                              | CAXFSN-00000-C001 |





Enterprise Networks EMEA

**Core Products**

# RESOURCES

CORNING

SEMINARS

TRAINING

SUPPORT

VIDEOS

## UniCam® Connector Technology Field Installation/Termination Methods

[www.corning.com/unicam](http://www.corning.com/unicam)

Check this site and get more information on our reworked UniCam® connector website.

## On-Demand Installation Videos

[www.corning.com/opcomm/videos](http://www.corning.com/opcomm/videos) • [www.corning.com/opcomm/youtube](http://www.corning.com/opcomm/youtube)

Need a quick refresher on the proper way to install a fan-out kit? We have an ever-growing library of how-to videos on-demand, on our website, or on our YouTube channel. Become a subscriber today!

## Request to be Contacted by Sales Development

Telephone: 00800 2676 4641 • Email: [emea.cs@corning.com](mailto:emea.cs@corning.com)

If you are interested in purchasing products or just want to chat about an upcoming project, our sales development team in your area is happy to help.

## Online Resource Library

[www.corning.com/opcomm/resourcelibrary](http://www.corning.com/opcomm/resourcelibrary)

Our online resource library gives you all the technical information you need, from specifications to installation videos to tutorials, all in one easy, central location at your fingertips.

## Events

[www.corning.com/opcomm/emea](http://www.corning.com/opcomm/emea)

Corning loves to welcome you to our free-of-charge customer events throughout the whole EMEA region. You can find upcoming events on our home page.

## Installers and Distributors

[www.corning.com/opcomm/emea/npi/](http://www.corning.com/opcomm/emea/npi/)

[www.corning.com/opcomm/auth/emea/en](http://www.corning.com/opcomm/auth/emea/en)

Corning works in close cooperation with a wide range of qualified intermediaries including installers, distributors, and network design planners throughout Europe, the Middle East, and Africa (EMEA). The skills of each are recognised with our framework of accreditation programmes.

## LANscape® Training

[www.corning.com/opcomm/lanscape/emea/en/](http://www.corning.com/opcomm/lanscape/emea/en/)

From many years of practical experience, our trainers know which knowledge and skills are required for each task, and they are in constant contact with development, sales, and project engineering teams at Corning.

## Customer Care

Telephone: 00800 2676 4641 • Email: [emea.cs@corning.com](mailto:emea.cs@corning.com)

This is no generic call centre – our customer care representatives are technically trained and work closely with our engineers to understand and support our customers' needs.

## Questions or Comments

[emea.cs@corning.com](mailto:emea.cs@corning.com)

Are you interested in our catalogue for  
Local Area Networks Core Products or  
additional printed copies of this book?  
Please call or write to us:

Telephone: 00 800 2676 4641

[emea.cs@corning.com](mailto:emea.cs@corning.com)

[www.corning.com/opcomm/emea](http://www.corning.com/opcomm/emea)



**CORNING**

**Corning Optical Communications GmbH & Co. KG • Leipziger Strasse 121 • 10117 Berlin, GERMANY  
+00 800 2676 4641 • FAX: +49 30 5303 2335 • [www.corning.com/opcomm/emea](http://www.corning.com/opcomm/emea)**

Corning Optical Communications reserves the right to improve, enhance, and modify the features and specifications of Corning Optical Communications products without prior notification. A complete listing of the trademarks of Corning Optical Communications is available at [www.corning.com/opcomm/trademarks](http://www.corning.com/opcomm/trademarks). All other trademarks are the properties of their respective owners. Corning Optical Communications is ISO 9001 certified. © 2012, 2014 Corning Optical Communications. All rights reserved. Published in the EU. LAN-1459-BEN / October 2014