



# Product Catalog

Outdoor Cabinets

**CONTEG**



## WE ARE CONTEG

Since 1998, Conteg has been moving step by step toward the top of the market. We're a leader in supplying complete solutions for data centers, along with all variety of telecommunication cabinets and industrial enclosures. Our representatives can be found in sixty countries, on three continents. We deliver to small businesses, large corporations and complex industrial centers, and can assist you as well. Customer satisfaction is our driving force, though everything begins and ends with trust. Allow us an opportunity to prove that our consistent, personal approach will ensure innovative, effective solutions to suit your every need.



## Conteg in numbers

Established: 1998

International Branches, Showrooms and Representatives: 10

Partners: in 60 countries on 3 continents

Headquarters: Prague, Czech Republic

Production Facilities and Central Warehouse: Pelhřimov, Czech Republic



Headquarters: Prague, Czech Republic

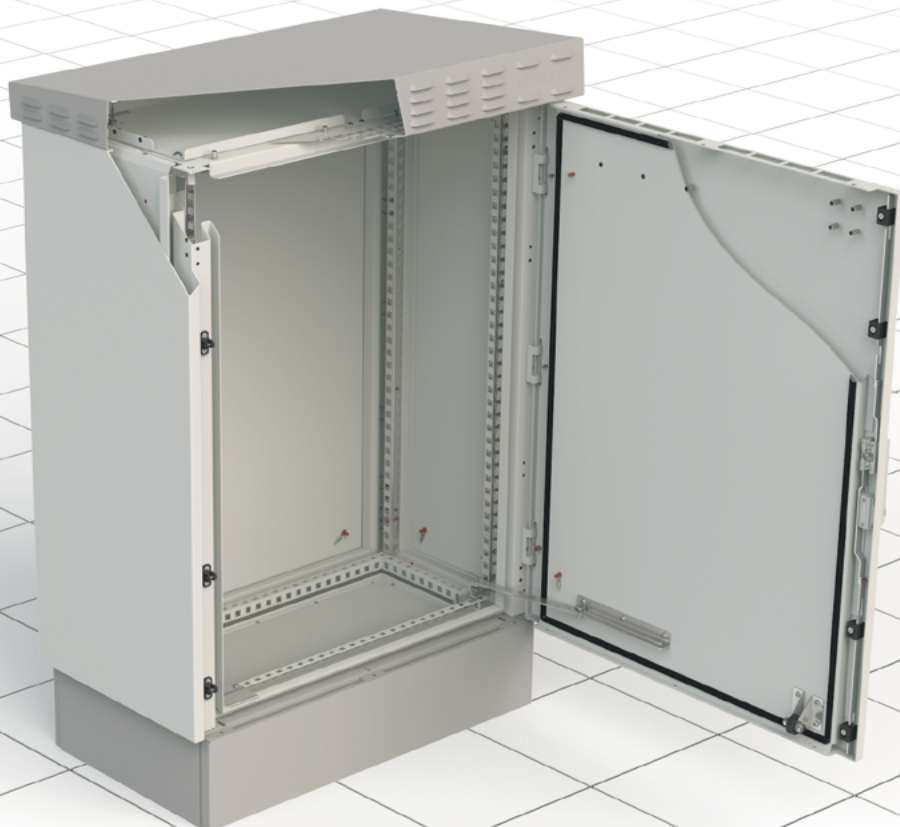
Production Facilities and Central Warehouse:  
Pelhřimov, Czech Republic

# outTEG outdoor cabinets

Don't compromise. You can benefit from the advantages offered by the new specialized outTEG line. With a compact design, clear line and climate control system, outTEG satisfies the requirements of customers based in high temperature locations as well as those situated in regions with extremely low temperatures.

Main task of double wall construction is to prevent the internal devices from the ambient environment. In compare to single wall cabinet with thermal insulation the double wall system maximally reduces thermal gains from the sun. The inner wall is not directly exposed to the sun radiation. There is a gap between the walls allowing natural airflow by which the thermal gains are rejected and do not affect the inner wall. The sun affects only the outside wall. There is no heat conduction from the outside surface to the indoor area. Generally, the inner wall is still in the shadow. While the single wall cabinet with thermal insulation transmitts the heat via its material in conduction way, resulting in much higher thermal gains from the sun a higher demands of cooling systems.

Double wall construction offers higher the safety and prevention of unauthorized intrusion.



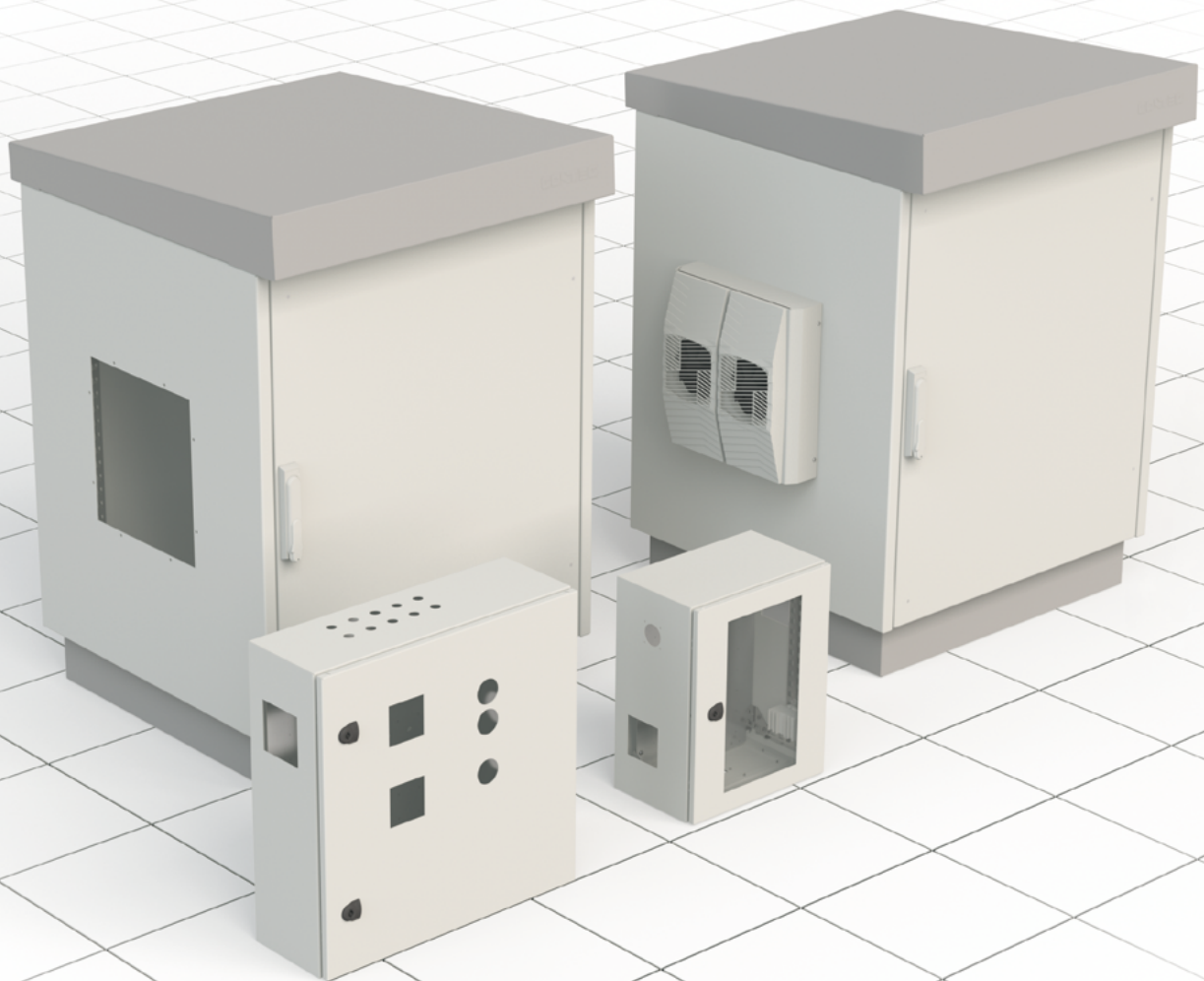
For more information, please contact our sales or technical team at [www.conteg.com/contacts](http://www.conteg.com/contacts) or use our online configurator at [www.conteg.com/configurators](http://www.conteg.com/configurators)

# Contents

<b>OUTDOOR SOLUTION</b>	<b>5</b>
<b>01 outTEG FREE-STANDING CABINETS</b>	<b>6</b>
outTEG II Double Natural	8
Interior Installation	14
Accessories	19
<b>02 outTEG LITE POLE MOUNT CABINETS</b>	<b>22</b>
outTEG LITE	24
Accessories	26
<b>03 inTEG WME COMPACT ENCLOSURES</b>	<b>30</b>
inTEG WME-O	32
Accessories	34
<b>04 OUTDOOR CLIMATE CONTROL SOLUTION</b>	<b>40</b>
Outdoor cooling units – External mounting position	42
Outdoor cooling units – Internal mounting position	44
<b>TECHNICAL DRAWINGS</b>	<b>48</b>
<b>HEATING DISSIPATION</b>	<b>51</b>
<b>INDEX</b>	<b>52</b>

# Conteg – modifications

Customizations are being carried out at the Modification center, which is part of the modern production plant in Pelhřimov. The center also includes the MODCentrum 29 CNC milling machine. We are able to prepare cut-outs for filter fans, cooling units, control panels and for buttons. All into sheet steel, stainless steel (AISI 304 and 316L) or aluminum cabinets. The cut-outs can be realized into flat removable parts of the rack cover (doors, cable glands, side panels, roofs and mounting plates), but also into welded monolithic enclosures.



For more information, please contact our sales or technical team [www.conteg.com/contacts](http://www.conteg.com/contacts)

# OUTDOOR SOLUTION

➤ The advantage of double-walled aluminum cabinets is that it maintains a 10% lower internal temperature than a plastic or single-walled solution. In many applications, our customers do not have to invest in air-conditioning units at all, or they can save them by lowering the power of these devices and consequently the energy consumed for their operation. You can order cabinets from our standard ranges to ensure quick delivery. If you have special requirements, you can design these cabinets according to your specifications. You can use our web configurator or contact our experienced sales representatives.

outTEG



outTEG LITE



inTEG WME-O



Material		Aluminum cover and roof Stainless steel frame and plinth	Aluminum	Stainless steel
Construction		Double-walled	Double-walled	Single-walled
IP rating		IP66	IP65	IP66
Mechanical resistance		IK10	IK10	IK10
Color		RAL 7035 for body RAL 7046 for roof and plinth	RAL 7035	RAL 7035
Surface		Powder coated	Powder coated	Powder coated
Dimensions	H	600 (12U), 800 (16U), 1000 (21U), 1200 (25U), 1400 (30U), 1600 (34U) mm	500, 600 (12U), 800 (17U) mm	300, 400, 500, 600 (12U), 800 (U17), 1000 (U21), 1200 (U25) mm
	W	650, 800, 1000 mm	400, 600 mm	200, 300, 400, 500, 600, 800 mm
	D	400, 500, 600, 700, 800, 1000 mm	400, 500, 600 mm	155, 210, 250, 300, 400 mm

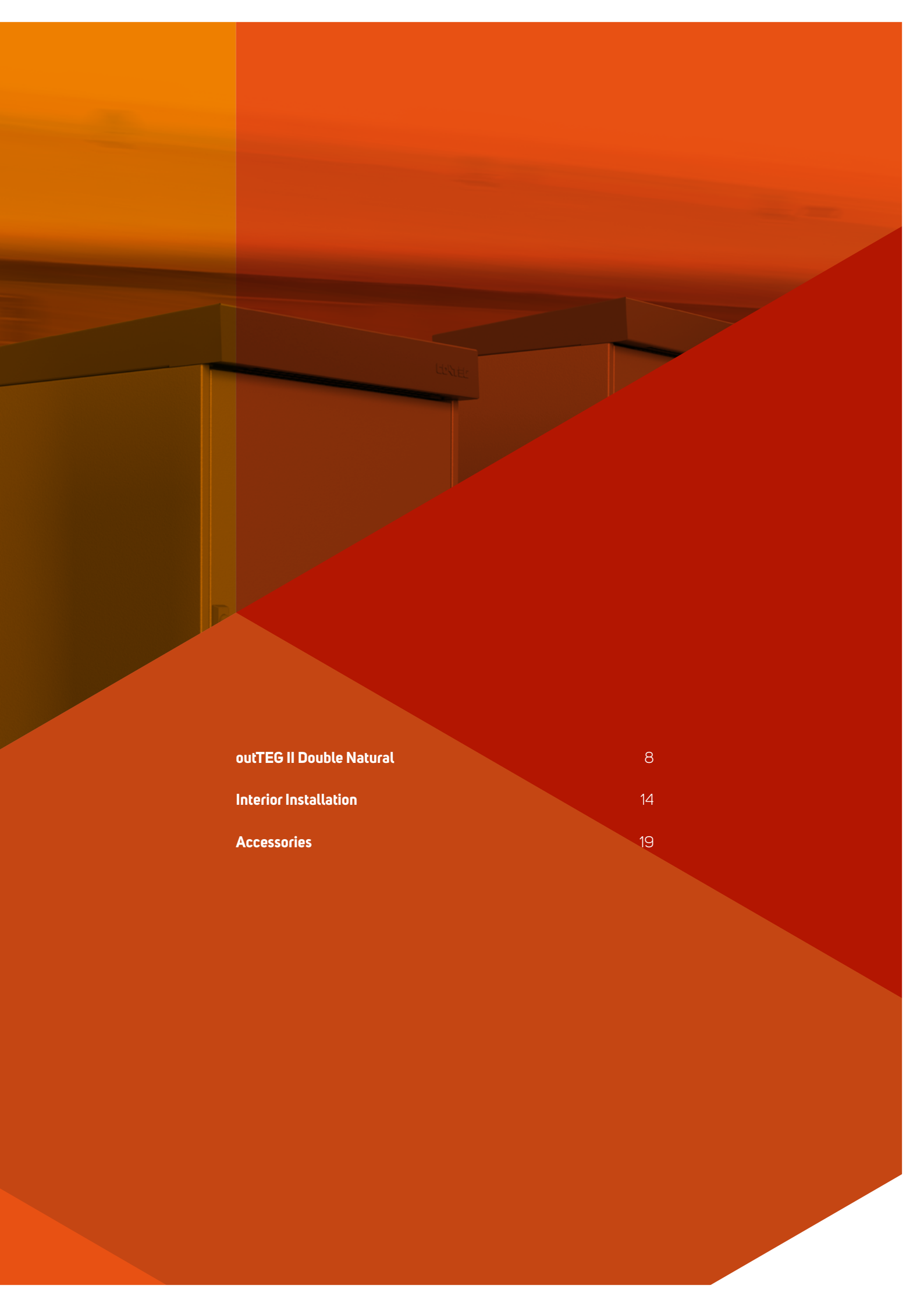


01

outTEG

FREE-STANDING  
CABINETS





**outTEG II Double Natural**

8

**Interior Installation**

14

**Accessories**

19

# outTEG II DOUBLE NATURAL



➤ Don't compromise. You can benefit from the advantages offered by the new specialized outTEG line. With a compact design, clear line and climate control system, outTEG satisfies the requirements of customers based in high temperature locations as well as those situated in regions with extremely low temperatures.

## MAIN ADVANTAGES

- Features integrated roof and plinth
- Welded stainless steel enclosure frame
- All removable parts are made of aluminum
- Compact design = no point of access for lever-type tools
- Ready for crane transport

COLOR SAMPLER:  RAL 7035  RAL 7046

## DESCRIPTION:

### Material

- Door, rear panel, roof - 2 mm AlMg3
- Frame, plinth - 2 mm stainless steel 1.4016 (AISI 403)

### Color

- Body color RAL 7035 (light grey, with UV protection for outdoor use)
- Roof and plinth color - RAL 7046 (dark grey, with UV protection for outdoor use)

### IP rating

- IP66 according to EN 60529  
(Degree of IP rating can be reduced after mounting some accessories)

### Seismic protection

- Seismic approvals according to Bellcore GR-63-CORE Zone 3 (Zone 4 upon request)

### Package includes

- Double-walled outdoor cabinet, fully mounted
- Ventilation - natural air flow between inner and outer walls

- Removable rear panel
- Removable roof
- Front door with multi-point locking system, key combination 333, door stop. Easily configured to a right or left hand door mounting
- 100 mm plinth
- Vertically mount the internal rails with 25 mm perforations
- Removable gland plate
- Eye-bolts
- Side panels (see page 10)

For detailed information see page 48

### OUTTEG DOUBLE-WALLED, SINGLE DOOR, HEIGHT 600 AND 1200 mm

	Package	12 U	16 U	21 U	21 U	25 U	25 U
H (U)		12 U	16 U	21 U	21 U	25 U	25 U
H (mm)		600	800	1000	1000	1200	1200
W (mm)		650	650	650	800	800	1000
D (mm)		600	600	600	500	800	700
Weight (kg)		63	69	81	82	115	119
Code	1 pc	OMR-DN-066506-R	OMR-DN-086506-R	OMR-DN-106506-R	OMR-DN-100805-R	OMR-DN-120808-R	OMR-DN-121007-R

### ACCESSORIES

Side panel**	1 pc	OMR-DN-S0606-1	OMR-DN-S0806-1	OMR-DN-S1006-1	OMR-DN-S1005-1	OMR-DN-S1208-1	OMR-DN-S1207-1
Mounting plate, full installation	1 pc	IDO-MM-F665	IDO-MM-F865	IDO-MM-F1065	IDO-MM-F108	IDO-MM-F128	IDO-MM-F1210
19" and 21" vertical rails	1 pair	IDO-MR-V6	IDO-MR-V8	IDO-MR-V10	IDO-MR-V10	IDO-MR-V12	IDO-MR-V12
ETSI vertical rails	1 pair	IDO-MR-E6	IDO-MR-E8	IDO-MR-E10	IDO-MR-E10	IDO-MR-E12	IDO-MR-E12
N profile for vertical rails	1 pair	IDO-MR-N6*	IDO-MR-N6*	IDO-MR-N6*	IDO-MR-N5*	IDO-MR-N8*	-
L profile for vertical rails	1 set	-	-	-	IDO-MR-L5	IDO-MR-L8	IDO-MR-L7
Horizontal rail	1 pair	see page 16					
Baying kit	1 set	OMR-DN-K0606	OMR-DN-K0806	OMR-DN-K1006	OMR-DN-K1005	OMR-DN-K1208	OMR-DN-K1207
Fixing frame for a concrete base	1 pc	IDO-MF-P6506	IDO-MF-P6506	IDO-MF-P6506	IDO-MF-P0805	IDO-MF-P0808	IDO-MF-P1007

\* You have to order 2 sets, for a height of 1400 and 1600 mm 3 sets must be ordered. For 800 mm width cabinets with IDO-MR-Nxx, an IDO-MR-N-B holder (2 sets for 1 set of IDO-MR-Nxx) must be ordered as well.

\*\* You have to order 2 pcs

**OUTTEG DOUBLE-WALLED, SINGLE DOOR, HEIGHT 1400 AND 1600 mm**

H (U)	Package	30 U	34 U	34 U	34 U	34 U
H (mm)		1400	1600	1600	1600	1600
W (mm)		650	650	800	800	1000
D (mm)		600	400	700	1000	800
Code	1 pc	OMR-DN-146506-R	OMR-DN-166504-R	OMR-DN-160807-R	OMR-DN-160810-R	OMR-DN-161008-R

**ACCESSORIES**

Side panel**	1 set	OMR-DN-S1406-1	OMR-DN-S1604-1	OMR-DN-S1607-1	OMR-DN-S1610-1	OMR-DN-S1608-1
Mounting plate, full installation	1 pc	IDO-MM-F1465	IDO-MM-F1665	IDO-MM-F168	IDO-MM-F168	IDO-MM-F1610
19" and 21" vertical rails	1 pair	IDO-MR-V14	IDO-MR-V116	IDO-MR-V16	IDO-MR-V16	IDO-MR-V16
ETSI vertical rails	1 pair	IDO-MR-E14	IDO-MR-E16	IDO-MR-E16	IDO-MR-E16	IDO-MR-E16
N profile for vertical rails	1 pair	IDO-MR-N6*	IDO-MR-N4*	IDO-MR-N7*	IDO-MR-N10*	-
L profile for vertical rails	1 set	-	-	IDO-MR-L7	IDO-MR-L10	IDO-MR-L8
Horizontal rail	1 pair	see page 16				
Baying kit	1 set	OMR-DN-K1406	OMR-DN-K1604	OMR-DN-K1607	OMR-DN-K1610	OMR-DN-K1608
Fixing frame for concrete base	1 pc	IDO-MF-P6506	IDO-MF-P6504	IDO-MF-P0807	IDO-MF-P0810	IDO-MF-P1008

\* You have to order 2 sets, for a height of 1400 and 1600 mm height 3 sets must be ordered. For 800 mm width cabinets with IDO-MR-Nxx, an IDO-MR-N-B holder (2 sets for 1 set of IDO-MR-Nxx) must be ordered as well.

\*\* You have to order 2 pcs

Do you need a solution for pole installation? Use outTEG LITE



For more information, please visit [page 22](#) or contact our technical team at [www.conteg.com/contacts](http://www.conteg.com/contacts)

## SIDE PANELS – PLAIN PANEL AND READY FOR AC UNITS INSTALLATION



Plain side panel	Side panel, internal part, ready for modifications*	Side panel, external part, ready for modifications*	Cabinet dimensions HxD (mm)	Package
OMR-DN-S0606-1	OMR-DCMI-S0606	OMR-DCME-S0606	600x600	1 pc
OMR-DN-S0806-1	OMR-DCMI-S0806	OMR-DCME-S0806	800x600	1 pc
OMR-DN-S1005-1	OMR-DCMI-S1005	OMR-DCME-S1005	1000x500	1 pc
OMR-DN-S1006-1	OMR-DCMI-S1006	OMR-DCME-S1006	1000x600	1 pc
OMR-DN-S1207-1	OMR-DCMI-S1207	OMR-DCME-S1207	1200x700	1 pc
OMR-DN-S1208-1	OMR-DCMI-S1208	OMR-DCME-S1208	1200x800	1 pc
OMR-DN-S1406-1	OMR-DCMI-S1406	OMR-DCME-S1406	1400x600	1 pc
OMR-DN-S1604-1	OMR-DCMI-S1604	OMR-DCME-S1604	1600x400	1 pc
OMR-DN-S1607-1	OMR-DCMI-S1607	OMR-DCME-S1607	1600x700	1 pc
OMR-DN-S1608-1	OMR-DCMI-S1608	OMR-DCME-S1608	1600x800	1 pc
OMR-DN-S1610-1	OMR-DCMI-S1610	OMR-DCME-S1610	1600x1000	1 pc

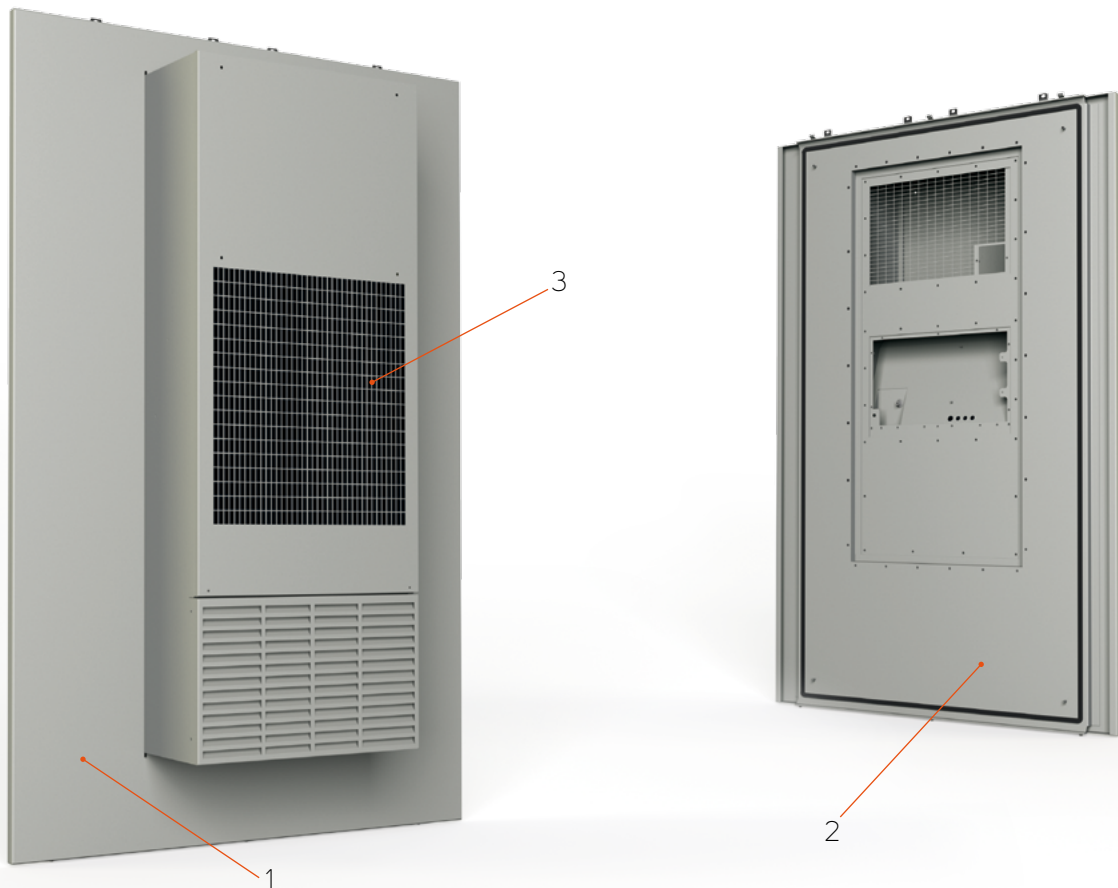
- Application: for assembling with cabinets OMR-DN-xxxxxx-R
- Double-walled construction
- Material: 2 mm AlMg3
- Color: RAL 7035 (light grey, with UV protection for outdoor use)

- **OMR-DN-Sxxxx-1** plain side panel, for a cabinet without the climate solution you need 2 pcs, IP65
- **OMR-DCMI-Sxxxx** and **OMR-DCME-Sxxxx** plus cutouts are ready in the CONTEG Modification Center for installation on the cooling unit, IP55. For a complete cooling unit

solution you still have to order 1 pc of OMR-DN-Sxxxx-1.

- For more information about cooling units, please visit page 40
- Package includes:
  - Assembly parts
  - Variants of side panels

### SIDE PANEL WITH AC UNIT



	Code	Description	Page
1	OMR-DCME-Sxxxx	Side panel, external part, ready for modifications	10
2	OMR-DCMI-Sxxxx	Side panel, internal part, ready for modifications	10
3	AC-WMO-xx-xxxx	Outdoor AC unit	40

## SIDE PANELS – WITH FORCED VENTILATION



Side panels with a filter fan and an outlet grid	Cabinet dimensions HxD (mm)	Package
OMR-DV-S0606	600x600	1 set
OMR-DV-S0806	800x600	1 set
OMR-DV-S1005	1000x500	1 set
OMR-DV-S1006	1000x600	1 set
OMR-DV-S1207	1200x700	1 set
OMR-DV-S1208	1200x800	1 set
OMR-DV-S1406	1400x600	1 set
OMR-DV-S1604	1600x400	1 set
OMR-DV-S1607	1600x700	1 set
OMR-DV-S1608	1600x800	1 set
OMR-DV-S1610	1600x1000	1 set

Note: 1 set = 2 pcs

- Application: for assembling with cabinets OMR-DN-xxxxxx-R
- Double-walled construction
- Material: 2 mm AlMg3

- Color: RAL 7035 (light grey, with UV protection for outdoor use)
- OMR-DV-Sxxxx assembled side panels (pair) with forced ventilation 180m<sup>3</sup>/h, 230 ACV (one

side with a filter fan and thermostat for cooling, and second one with an outlet grid), IP55

- Package includes:
  - Assembly parts
  - Variants of side panels

## PERFORATED ROOF



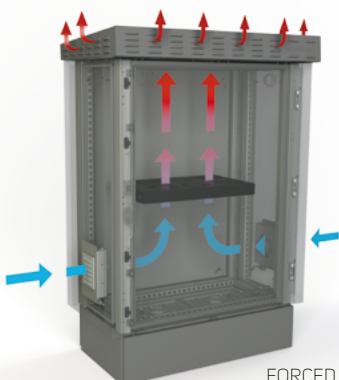
PERFORATED ROOF		
Code	For cabinet WxD (mm)	Package
OMR-DV-R6504	650x400	1 set
OMR-DV-R6506	650x600	1 set
OMR-DV-R0805	800x500	1 set
OMR-DV-R0807	800x700	1 set
OMR-DV-R0808	800x800	1 set
OMR-DV-R0810	800x1000	1 set
OMR-DV-R1007	1000x700	1 set
OMR-DV-R1008	1000x800	1 set

SIDE PANELS WITH AN OUTLET GRID FOR VENTILATING THE INSIDE OF THE ROOF		
Code	Cabinet dimensions HxD (mm)	Package
OMR-DV-S1005-54	1000x500	1 set
OMR-DV-S1207-54	1200x700	1 set
OMR-DV-S1208-54	1200x800	1 set
OMR-DV-S1406-54	1400x600	1 set
OMR-DV-S1604-54	1600x400	1 set
OMR-DV-S1607-54	1600x700	1 set
OMR-DV-S1608-54	1600x800	1 set
OMR-DV-S1610-54	1600x1000	1 set

Note: 1 set = 2 pcs

- Application: assembled with OMR-DN-xxxxxx-R cabinets
- Material: 2 mm AlMg3
- Color: RAL 7046 (dark grey, with UV protection for outdoor use)
- Package includes: assembly parts

### VENTILATION – PERFORATED ROOF + VENTILATION UNITS + MODIFICATION COVER WITH AN OUTLET GRID



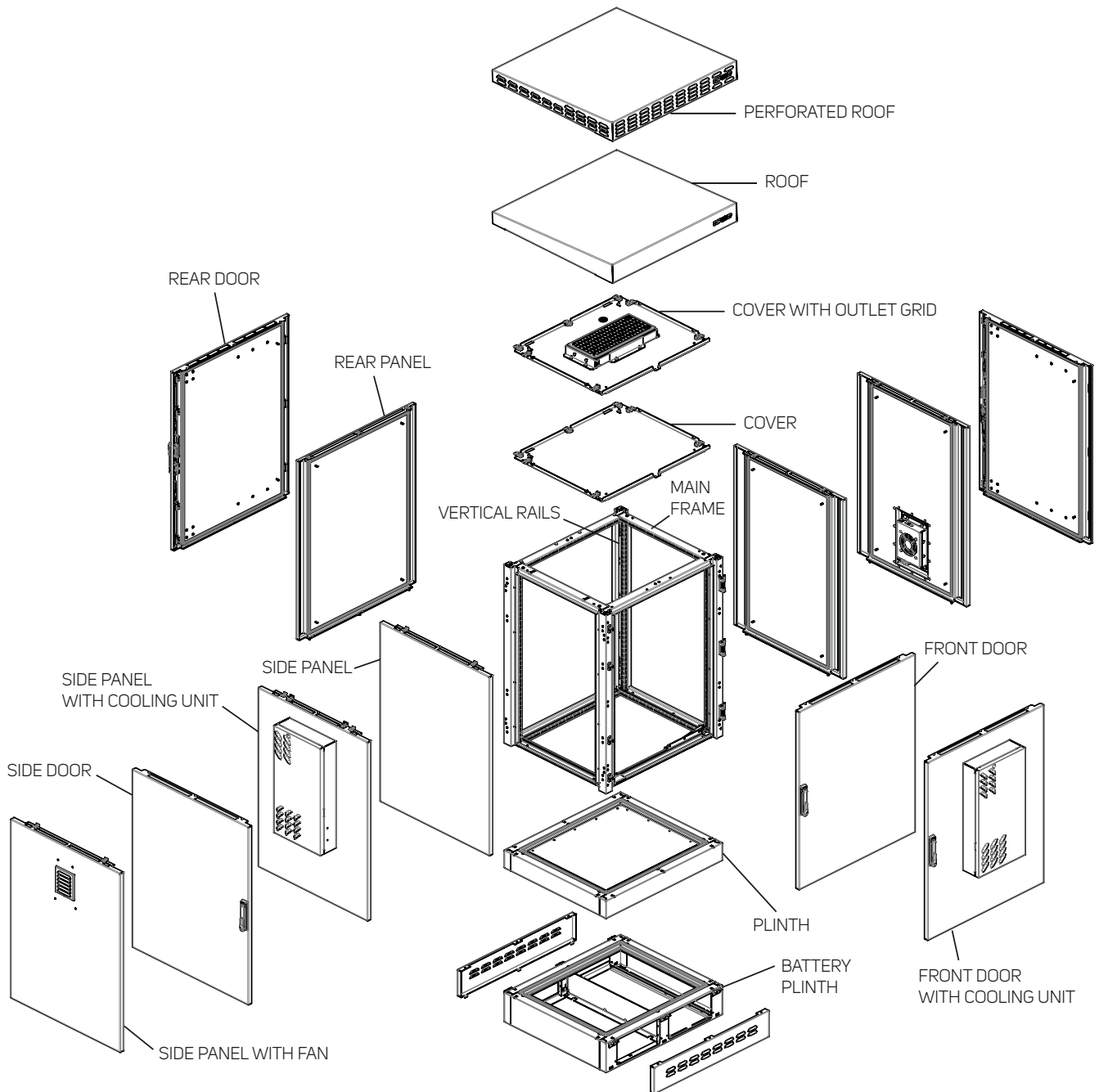
FORCED VENTILATION

### VENTILATION WITH 19" UNITS + MODIFICATION COVER WITH AN OUTLET GRID



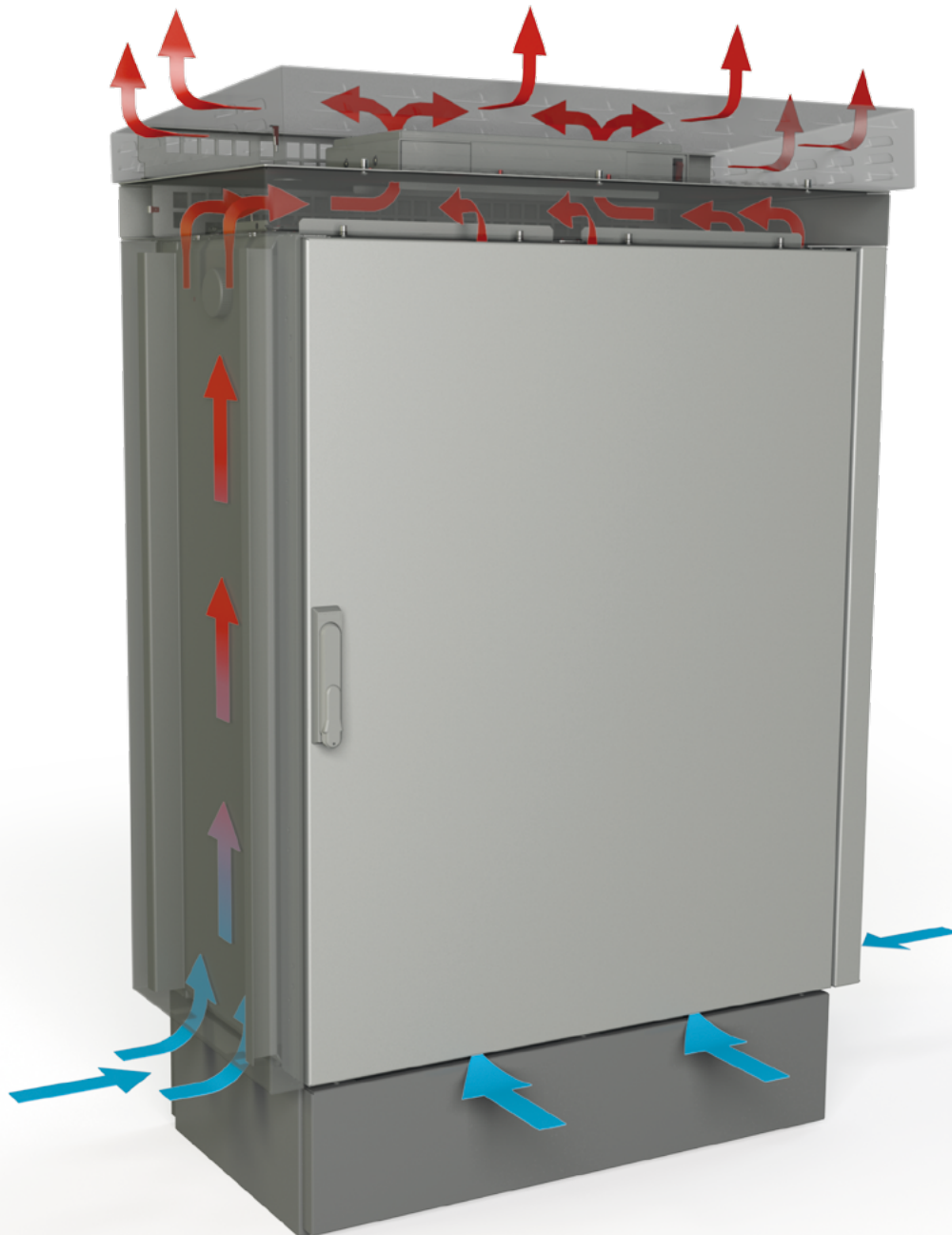
For technical details see page 45

➤ If you can't seem choose from our basic series, you can design your own outdoor cabinet according to your specific requirements. Using the web configurator, or via contact with our experienced sales representatives, who will gladly help you.



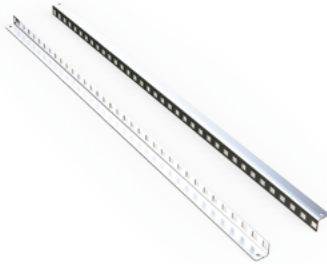
## EXAMPLE OF CUSTOMIZED SOLUTIONS FOR outTEG

- Support for natural ventilation between the inner and outer walls with roof mounted fans.



# INTERIOR INSTALLATION

## 19", 21" AND ETSI VERTICAL RAILS

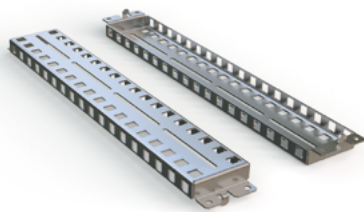


- Application: in combination with N or L profiles
- Material: 2 mm galvanized sheet steel
- Installation: on IDO-MR-Nxx / IDO-MR-Lxx rails
- Package includes: assembly parts

Code (19", 21")	Code (ETSI)	For cabinet height mm (in U)	Package
IDO-MR-V6	IDO-MR-E6	600 (12U)	1 set
IDO-MR-V8	IDO-MR-E8	800 (16U)	1 set
IDO-MR-V10	IDO-MR-E10	1000 (21U)	1 set
IDO-MR-V12	IDO-MR-E12	1200 (25U)	1 set
IDO-MR-V14	IDO-MR-E14	1400 (30U)	1 set
IDO-MR-V16	IDO-MR-E16	1600 (34U)	1 set

1 set = 2 pcs

## N PROFILE FOR VERTICAL RAILS



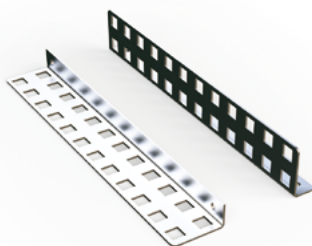
- Application: for cabinets with a width of 650 and 800\* mm
- Material: 2 mm galvanized sheet steel
- Installation: on the frame profile
- Package includes: assembly parts

Code	For cabinet depth (mm)	Package
IDO-MR-N4	400	1 set
IDO-MR-N5	500	1 set
IDO-MR-N6	600	1 set
IDO-MR-N7	700	1 set
IDO-MR-N8	800	1 set
IDO-MR-N10	1000	1 set

1 set = 2 pcs

\* You have to order 2 sets, for a height of 1400 and 1600 mm 3 sets must be ordered. For 800 mm width cabinets with ID-MR-Nxx, an IDO-MR-N-B holder (2 sets for 1 set of IDO-MR-Nxx) must be ordered as well

## L PROFILE FOR VERTICAL RAILS



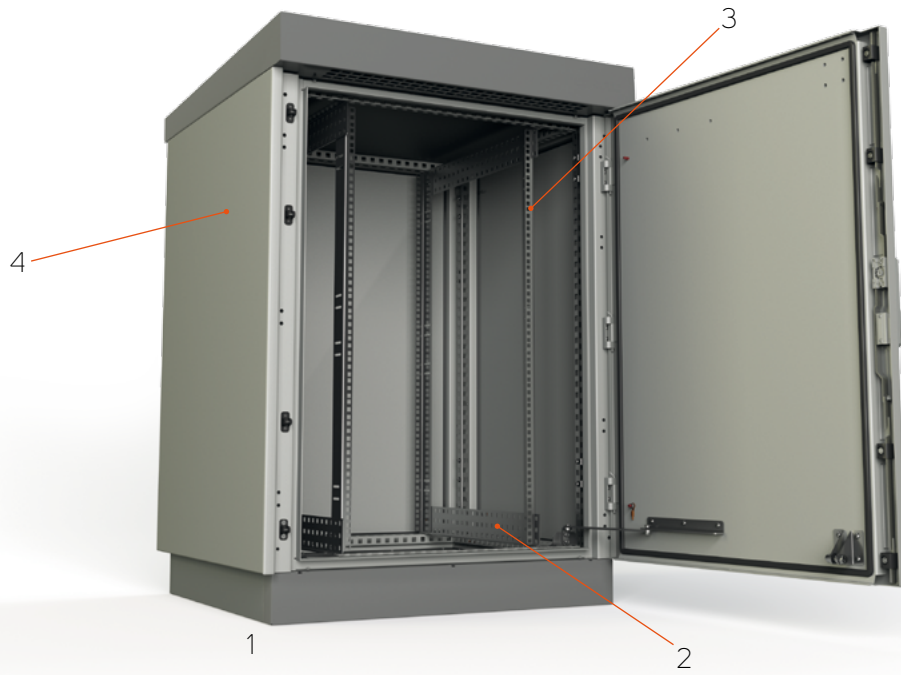
- Application: for 800 and 1000 mm cabinet widths
- Material: 2 mm galvanized sheet steel
- Installation: on the frame profile
- Package includes: assembly parts

Code	For cabinet depth (mm)	Package
IDO-MR-L5	500	1 set
IDO-MR-L7	700	1 set
IDO-MR-L8	800	1 set
IDO-MR-L10	1000	1 set

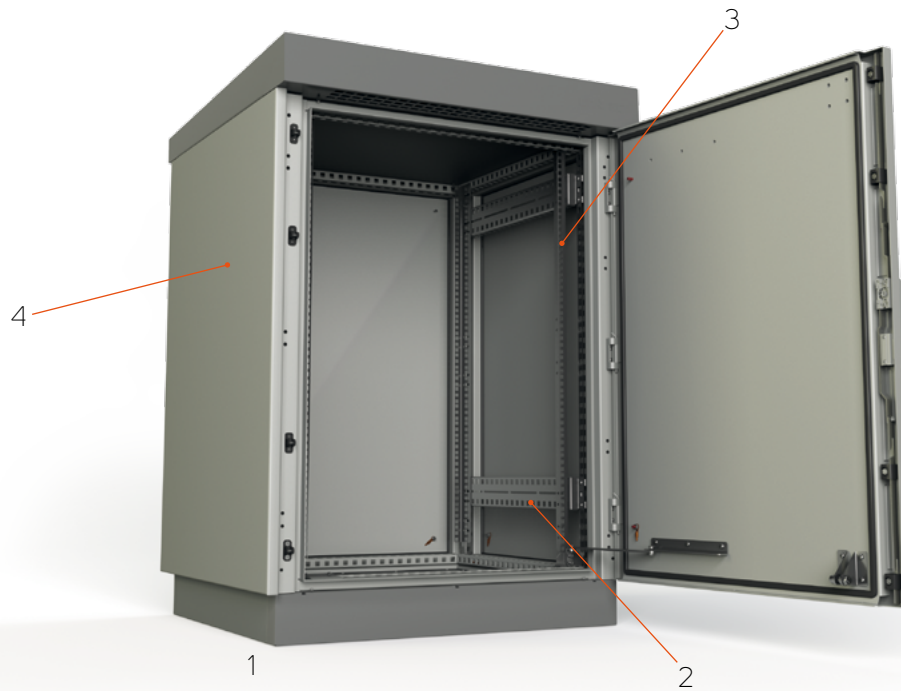
1 set = 4 pcs



TYPICAL MOUNTING OPTIONS FOR outTEG

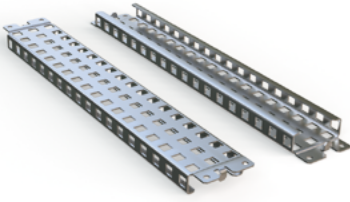


Code	Description	Page
1 OMR-DN-xxxxxx-R	Outdoor cabinet	8
2 IDO-MR-Lx	L profile for 19" vertical rails (1 set)	14
3 IDO-MR-Vx	Vertical rails (1 set for front and 2 sets for front and rear 19" extrusions)	14
4 OMR-DN-Sxxxx-1	Plain side panels (2 pcs)	10



Code	Description	Page
1 OMR-DN-xxxxxx-R	Outdoor cabinet	8
2 IDO-MR-Nx	N profile for 19" vertical rails (2-3 sets, depends on the cabinet height)	14
3 IDO-MR-Vx	Vertical rails (1 set for front and 2 sets for front and rear 19" extrusions)	14
4 OMR-DN-Sxxxx-1	Plain side panels (2 pcs)	10

## HORIZONTAL AND VERTICAL RAILS



- Application: for additional mounting positions
- Material: 2 mm galvanized sheet steel
- Installation: on the frame profile
- Package includes: assembly parts

CABINET HEIGHT VERTICAL RAIL			
Code	For cabinet H (mm)	Load (kg)	Package
IDO-MR-HH6	600	240	1 set
IDO-MR-HH8	800	180	1 set
IDO-MR-HH10	1000	140	1 set
IDO-MR-HH12	1200	120	1 set
IDO-MR-HH14	1400	80	1 set
IDO-MR-HH16	1600	80	1 set

CABINET WIDTH HORIZONTAL RAIL			
Code	For cabinet W (mm)	Load (kg)	Package
IDO-MR-HW65	650	70	1 set
IDO-MR-HW8	800	50	1 set
IDO-MR-HW10	1000	50	1 set

CABINET DEPTH HORIZONTAL RAIL			
Code	For cabinet D (mm)	Load (kg)	Package
IDO-MR-H4	400	140	1 set
IDO-MR-H5	500	100	1 set
IDO-MR-H6	600	70	1 set
IDO-MR-H7	700	60	1 set
IDO-MR-H8	800	50	1 set
IDO-MR-H10	1000	50	1 set

1 set = 2 pcs

## MOUNTING PLATE



- Application: combination with 19" extrusions possible
- Material: 3 mm galvanized sheet steel
- Package includes: assembly parts

Code	For cabinet size HxW (mm)	Package
IDO-MM-F665	600x650	1 pc
IDO-MM-F865	800x650	1 pc
IDO-MM-F1065	1000x650	1 pc
IDO-MM-F108	1000x800	1 pc
IDO-MM-F128	1200x800	1 pc
IDO-MM-F1210	1200x1000	1 pc
IDO-MM-F1465	1400x650	1 pc
IDO-MM-F1665	1600x650	1 pc
IDO-MM-F168	1600x800	1 pc
IDO-MM-F1610	1600x1000	1 pc



## BAYING KIT

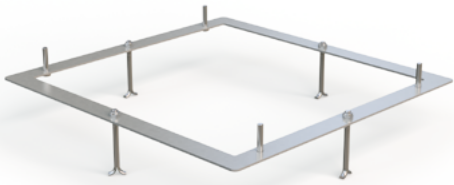


- Baying kit for assembling cabinets in a row
- Application: for assembling with OMR-DN-xxxxxx-R cabinets
- Double-walled construction
- Material: 2 mm AlMg3
- Degree of protection of assembled cabinets: IP55
- Color: RAL 7035 (light grey, with UV protection for outdoor use)
- Package includes: assembly parts

Code	For cabinet HxD (mm)	Package
OMR-DN-K0606	600x600	1 set
OMR-DN-K0806	800x600	1 set
OMR-DN-K1005	1000x500	1 set
OMR-DN-K1006	1000x600	1 set
OMR-DN-K1207	1200x700	1 set
OMR-DN-K1208	1200x800	1 set
OMR-DN-K1406	1400x600	1 set
OMR-DN-K1604	1600x400	1 set
OMR-DN-K1607	1600x700	1 set
OMR-DN-K1608	1600x800	1 set
OMR-DN-K1610	1600x1000	1 set



## FIXING FRAME FOR A CAST CONCRETE BASE



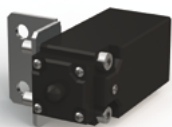
- Fixing frame for right position and installation of outTEG cabinet
- Application: for assembling with outTEG cabinets (both series)
- Welded frame with anchors and screws
- Material: 4 mm galvanized sheet steel
- Package includes: assembly parts

Code	For cabinet WxD (mm)	Package
IDO-MF-P6504	650×400	1 set
IDO-MF-P6506	650×600	1 set
IDO-MF-P0805	800×500	1 set
IDO-MF-P0807	800×700	1 set
IDO-MF-P0808	800×800	1 set
IDO-MF-P0810	800×1000	1 set
IDO-MF-P1007	1000×700	1 set
IDO-MF-P1008	1000×800	1 set



# ACCESSORIES

## DOOR SWITCH



- Bracket material: 2 mm zinc-plated sheet steel
- Door switch: IP65, plastic, 1NO + 1NC, PG13,5, - 25°C to +70°C
- Rated current: 10 A / 250 VAC
- Plug: grey ST 17/2
- Supply cable: 1 m, 2G 1,0 mm<sup>2</sup>
- Package includes: door switch and all necessary assembly parts

Code	Package
IDO-DC	1 pc

## POCKET FOR DOCUMENTS



- Material: ABS
- Color: RAL 7035
- Dimensions: 234×241×31 mm (H×W×D)
- Mounting: with self-adhesive tape
- Package includes: plastic pocket for documents and adhesive tape

Code	Package
ID-PO-A4	1 pc

## LIGHTING UNITS



- Lighting unit, 11 W
- 19" or frame installation
- Automatic function ensured by motion sensor or on/off switch
- Dimensions: 345×91×40 mm
- Mounting: screw fixing, M5
- Connection: terminal 2,5 mm<sup>2</sup> with cable lamp, torque 0,8 Nm max
- Package includes: lighting unit ready for connection

Code	Description	Package
ID-PO-L1-4	230 VAC, motion sensor	1 set
ID-PO-L2-4	230 VAC, on/off switch	1 set
ID-PO-L2-1	24 VDC, motion sensor	1 set

## EYE BOLTS



- Eye bolts for crane transport
- Application: for assembling with OMR-DN-xxxxxx-R, holes with internal threads under roof
- Material: Zinc plated carbon steel
- DIN580
- M10
- Package includes: 4 pcs

Code	Package
IDO-EB	1 set

# RAMOS PLUS



➤ **RAMOS Plus** is an entry model of the RAMOS intelligent range, designed for use in indoor and outdoor cabinets. Available in either standard or GSM options, the latter with a built-in GSM modem and external antenna. This model may be used in many ways thanks to the four intelligent ports. Improved intelligent ports support a full range of accessories, including RAMOS Ultra for intelligent ports.

RAMOS PLUS	
Code	Package
RAMOS PLUS	1 set

INTELLIGENT ACCESSORIES FOR RAMOS PLUS		
Code	Description	Package
RMS-I-ST	One wire temperature sensor with a 30 cm cable; can be extended up to 30 m (Cat. 5/6 LAN) via Cat. 5 coupler (included)	1 set
RMS-I-STH	One wire temperature and humidity sensor with a 30 cm cable. Humidity range: 0–100%. Can be extended up to 30 m (Cat. 5/6 LAN) via CAT. 5 coupler (included).	1 set
RMS-I-STHB	One wire temperature and humidity sensor in the box with a free 1.5 m LAN cable. Humidity range: 0–100%. Can be extended up to 300 m (Cat. 5/6 LAN).	1 set
RMS-I-AF	Airflow sensor with attached 1.5 m LAN cable (Cat. 5). On/off airflow signal alarm.	1 set
RMS-I-AS	Siren & Strobe light with attached LAN cable (Cat. 5) 1.5 m. 100 db siren sound and flashing strobe, interval 400× per minute. Cable can be extended up to 30 m (Cat. 5/6 LAN).	1 set
RMS-I-DE-01	Smoke detector with attached 1.5 m LAN cable (Cat. 5). On/off smoke detector alarm. Can be connected via dry contact when a 9 V battery is used.	1 set
RMS-I-DE-02	PIR motion detector with attached 1.5 m LAN cable (Cat. 5). Can be connected in a chain of up to 10 Motion Detector Sensors on a single port. 60° detection angle. 3 m detection range.	1 set
RMS-I-DE-04	Spot water sensor with a 4.5 m cable. Maximum cable extension 60 m.	1 set
RMS-I-DE-06	Rope water sensor with a 3 m detection cable. 1.5 m LAN communication cable (Cat. 5) included (max. length 30 m). Protects water-sensitive equipment from potential disaster. Detects battery Acid for short-term exposure. Sensor cable can be extended via RMS-I-DE-06-EXT3.	1 set
RMS-I-DE-06-EXT3	3 m sensor rope extension for RMS-I-DE-06; maximum extension 50 m	1 set
RMS-I-DE-07	Rope water locate sensor with 3 m length detection cable, 6 m non-detection cable and connection cable 1.5 m; (can be extended by LAN cable (Cat. 5e/6)	1 set
RMS-I-DE-07-EXT3	3 m rope sensor extension for RMS-I-DE-07; maximum extension 50 m	1 set
RMS-I-DRC	Dry contact with 4.5 m cable, input or output; sources of up to 20 mA when used as input. Input voltage range 0 to 5 V.	1 set
RMS-I-MK	Magnetic door contact with 4.5 m cable (mounting holder included). Maximum extension 300 m. Open/closed contact switch.	1 set
RMS-I-PWR-NO	AC-Sensor controlled relay normally open (110 V / 220 V), 1.5 m LAN cable included; maximum length 30 m. Built-in 10A Fuse. C13 and C14 socket connection. Switch can be controlled by any sensor.	1 set
RMS-I-VC	4–20 mA Converter with attached 1.5 m LAN cable (Cat. 5). Collects analog values from a wide array of sensors.	1 set
RMS-I-CON	RJ45-RJ45 coupler (Cat. 5e) for sensor cable extension, package of 10 pcs	1 set
RAMOS ULTRA-EX-DB-8	Expansion board adds 8 dry contacts (IN/OUT) to one intelligent port (RJ45); each can be configured as input or output (sink up to 20 mA). Maximum length of connection cable (LAN Cat. 5/6) 300 m.	1 set
RMS-U-DST	Daisy-chain temperature sensor with attached 1.5 m LAN cable (Cat. 5). Up to 8 sensors can be connected to a single intelligent sensor port in 150 m total cable length.	1 set
RMS-U-DST-8	Package with 8 pcs of RMS-U-DST	1 package
RMS-U-RB-8	Box with 8 changeover relay contacts for control (manually or via notification)	1 set

- 4 auto-sense intelligent sensor ports; can be set either to input or output
- All accessories powered via Intelligent ports
- Communication via SNMP v1, v2 and v3
- Notification via email and SNMP traps
- Fully embedded TCP/IP and web server
- Syslog and history with sensor graphs
- Network management system integration
- Security login for user and administrator
- Optional built-in GSM modem available upon request
- Package includes: RAMOS Plus monitoring device, power adapter, 1.5 m crossover patch cord cable, bracket with screws and installation CD

# RAMOS MINI



➤ **RAMOS Mini** is designed for deployment within a single rack, monitoring internal and external environments. Attached to a network, it reports the status of sensors deployed in and around racks to any location worldwide. Through the use of SNMP traps, it can fully integrate with any network management software.

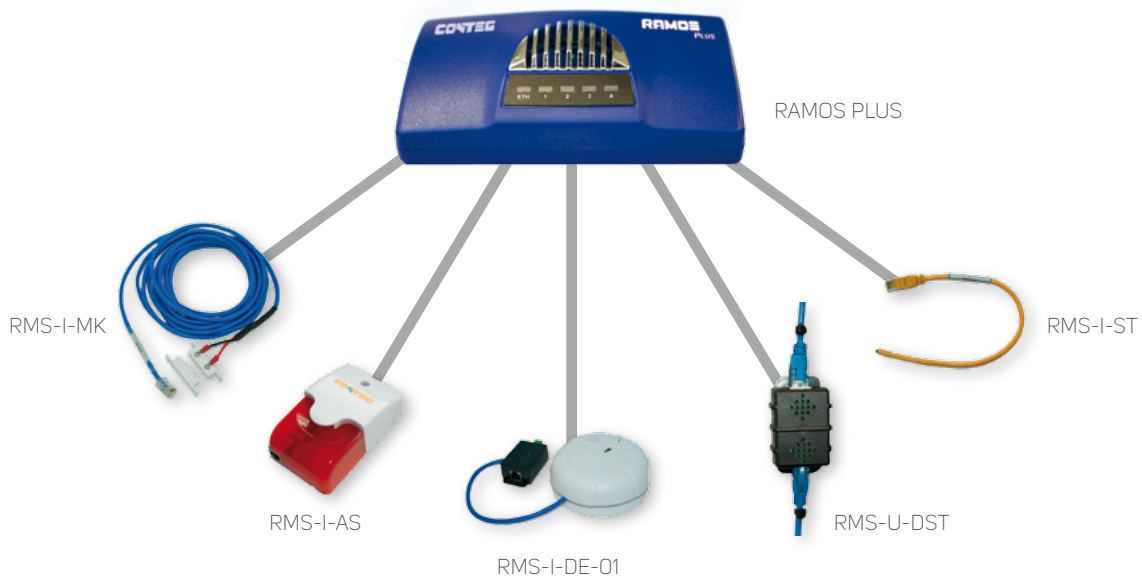
- Up to 3 temperature or humidity sensors (with new firmware)
- 1x dry contact input
- 1x output (relay switch contact up to 50 V DC)
- Two alert ranges per sensor
- Notification alarm via email and SNMP trap to several recipients
- Built-in graphic web interface for configuration and value monitoring
- Each sensor comes with a unique ID
- Alarm updates via email and SNMP trap or SMS (over CONTEG Pro Server Software or 3rd-party software)
- Open communication protocols (web, email, SNMP, XML)
- Security: password
- Optional 255 data point graph view
- Package includes: RAMOS Mini, up to 3 sensors (temperature and humidity), 1x IN, 1x OUT, incl. RMS-ST-02, RMS-PW-05, straight and angle holder, installation CD

RAMOS MINI	
Code	Package
RAMOS MINI	1 set

RAMOS MINI ACCESSORIES		
Code	Description	Package
RMS-ST-02	1-wire temperature sensor with a 3 m cable; -10 °C to +80 °C	1 pc
RMS-SH-02	1-wire humidity sensor with a 3 m cable; 0–100% RH	1 pc
RMS-STH-01	1-wire temperature & humidity sensor with a 3 m cable; -30 °C to +80 °C; 0–100% RH	1 pc
RMS-ST-04	Daisy-chain temperature sensor with a 3 m cable; -10 °C to +80 °C	1 pc
RMS-STH-02	Daisy-chain temperature and humidity sensor with a 3 m cable; -10 °C to +80 °C; 0–100% RH	1 pc
RMS-DE-01	Optical smoke detector*	1 pc
RMS-DE-02	PIR motion detector*	1 pc
RMS-DE-04	Flood detector*	1 pc
RMS-DE-05	Broken glass dual detector*	1 pc
RMS-VS	Vibration sensor	1 pc
RMS-MK-01	Magnetic door contact with a fixing bracket and 2.5 m cable	1 pc
RMS-CON-04	Hub for connecting two 1-wire sensors to 1 Wire bus	1 pc
RMS-AS-01	Acoustic siren with LED signalling, 120 dB*	1 pc
RMS-PWR-01	Power Box, remote switching external devices up to 230 V / 10 A, power detection feature	1 pc
RMS-PW-05	Universal power supply 5 V DC	1 pc
RMS-PW-12	EU plug power supply for accessories 12 V DC	1 pc

\*Requires external power supply 12V DC (e.g. RMS-PW-12)

## EXAMPLE OF ACCESSORIES



The image features two grey metal cabinets mounted on a dark grey utility pole. The cabinets are rectangular with a vented top section and a main door with two locking bolts. The brand name 'outTEG' is visible on the top of each cabinet. The background is a bright yellow with a blurred utility pole and a white ground area at the bottom. The overall composition is modern and industrial.

02

outTEG LITE  
POLE MOUNT  
CABINETS





**outTEG LITE**

24

**Accessories**

26

# outTEG LITE



➤ The **outTEG LITE** series brings you a double-walled design with both pole or wall installation possible. Natural ventilation is provided by air circulation between the walls. Suitable for projects where the installed equipment has low to medium heat dissipation and requires a stable internal climate. It's possible to equip the cabinet with a thermoelectric unit.

## MAIN ADVATAGES

- Compact and light double-walled design
- Highest protection against corrosion
- Features an integrated roof
- Made of aluminum
- Polyester powder coat with UV protection
- PUR non-porous gasket – suitable for extreme temperatures

COLOR SAMPLER:  RAL 7035

## DESCRIPTION:

### Material

- Aluminum AlMg3

### Surface

- Polyester epoxy coat

### Color

- RAL 7035 for outdoor use
- Optionally RAL 7046 for roof

### IP Rating

- IP65 accoring to EN60529 (degree of protection can be reduced after mounting some accessories)

### Mechanical protection

- IK10 according to IEC 6226

### Supply includes

- Double-walled outdoor cabinets, fully mounted
- Assembled with a perforated roof

- Natural ventilation between inner and outer walls
- Front door with two handles, key combination 333, door stop. Easily configured to a right or left hand door mounting
- Perforated internal horizontal rails on side panels
- Door stop

For detailed information see page 49

OUTTEG LITE						
Enclosure	H (mm)	500	600	600	800	800
	H (U)	-	12	12	17	17
	W (mm)	400	600	600	600	600
	D (mm)	400	500	600	500	600
Material thickness	Body	2	2	2	2	2
	Roof	2	2	2	2	2
	Door	2	2	2	2	2
Weight (kg)	22,5	34	36,5	43,5	46,5	
Order Code		OMR-DL-050404	OMR-DL-060605	OMR-DL-060606	OMR-DL-080605	OMR-DL-080606
ACCESSORIES						
Mounting plate	1 pc	ID-W-SP5040	ID-W-SP6060	ID-W-SP6060	ID-W-SP8060	ID-W-SP8060
19" extrusions	1 pair	-	ID-W-U12	ID-W-U12	ID-W-U17	ID-W-U17
Vertical rails	1 pair	ID-W-H5	ID-W-H6	ID-W-H6	ID-W-H8	ID-W-H8
Plinth 100 mm	Front and rear parts	1 set	ID-F-SPF04	ID-F-SPF06	-	-
	Side parts	1 set	ID-F-SPS04	ID-F-SPS05	-	-
Brackets for pole mounting	1 set*	ID-W-MP4	ID-W-MP6	ID-W-MP6	ID-W-MP6	ID-W-MP6
Brackets for wall mounting	1 set*	ID-W-WB	ID-W-WB	ID-W-WB	ID-W-WB	ID-W-WB

\* For correct installation we recommend using 2 sets



ID-W-MP6



ID-W-WB



ID-X-SPFxx + ID-X-SPSxx

# ACCESSORIES

## POLE-MOUNTING BRACKETS



- Material: 2 mm stainless steel
- Installation: for poles with a diameter of up to 250 mm
- Load: 200 kg
- Package includes: pole-mounting brackets and all necessary assembly parts (2 profile rails, 2 clamping straps (l=850 mm), 8 set: screws M8 x 12, self-locking nuts and washers adhesion)

Code	For cabinet W (mm)
ID-W-MP4	400
ID-W-MP6	600

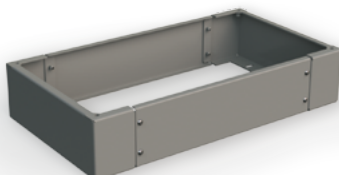
## WALL-MOUNTING BRACKETS



- Material: 3 mm stainless steel
- Load: 100 kg
- Package includes: wall-mounting brackets and all necessary assembly parts for mounting to an enclosure

Code	Package
ID-W-WB	4 pcs

## PLINTH



- Height: 100 mm
- Material: 2 mm stainless steel 1.4016 (AISI 403)
- Surface finish: polyester-powder coat
- Color: RAL 7046
- You must order ID-x-SPSxx and ID-x-SPFxx
- Package includes: plinths and all necessary assembly parts

PLINTH outTEG LITE – SIDE KIT		
Code	For cabinet D (mm)	Package
ID-F-SPS04	400	1 set
ID-F-SPS05	500	1 set

1 set includes: 2x side part, mounting accessories

PLINTH outTEG LITE – FRONT AND REAR KIT		
Code	For cabinet W (mm)	Package
ID-F-SPF04	400	1 set
ID-F-SPF06	600	1 set

1 set includes: 1x front part, 1x rear part, mounting accessories

## DOOR SWITCH



- Material – brackets: 2 mm zinc-plated sheet steel
- Door switch: IP65, plastic, 1NO + 1 NC, PG13,5, -25°C to +70°C
- Usage: available for enclosures with a minimum height of 500 mm and depth of 250 mm
- Package includes: door switch and all necessary assembly parts

Code	Package
ID-W-DC	1 pc

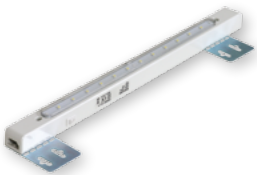
## POCKET FOR DOCUMENTS



- Material: ABS
- Color: RAL7035
- Dimensions: 234×241×31 mm (H×W×D)
- Mounting: with self-adhesive tape
- Package includes: plastic pocket for documents and adhesive tape

Code	Package
ID-PO-A4	1 pc

## LIGHTING UNIT



- Degree of protection: IP20
- Mounting: on mounting plate or inner side rails
- LED technology, 12 light spots
- Dimensions: 400×26×27 mm (W×H×D)
- Package includes: lighting unit and inter/connection cables
- Bracket for installation on a mounting plate. Depth adjustment is possible.

Code	Description	Package
ID-W-L	3W, 230 W, 50 Hz	1 pc

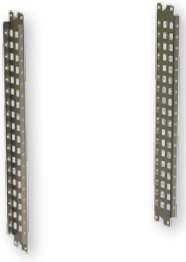
## EARTHING



- ID-W-EK: complete earthing kit for enclosures
- ID-W-EW68 / EW88 / EW8816: 300 mm cable length with crimped lugs
- Set includes: nuts, screws for earthing door(s), enclosure and mounting plate

Code	Description	Package
ID-W-EK	Complete earthing kit inTEG WME	1 set
ID-W-EW68	Grounding wires M6, M8 (door, enclosure), cross-section 10 mm <sup>2</sup>	10 pcs
ID-W-EW88	Grounding wires M8, M8 (enclosure, mounting plate), cross-section 10 mm <sup>2</sup>	10 pcs
ID-W-EW8816	Grounding wires M8, M8 (enclosure, mounting plate), cross-section 16 mm <sup>2</sup>	10 pcs

## RAILS FOR INTERIOR INSTALLATION



- Installation: on interior vertical rails which are part of an enclosure
- Usage: available for enclosures with a minimum depth of 250 mm
- Material: 2 mm zinc-plated sheet steel with 25 mm perforation
- Rail width: 75 mm
- Package includes: 2 pcs of rails for interior installation and all necessary assembly parts

Code	For cabinet H (mm)	Package
ID-W-H5	500	1 set
ID-W-H6	600	1 set
ID-W-H8	800	1 set

1 set = 2 pcs

## 19" FIXED EXTRUSIONS



- Installation: on interior rails which are part of an enclosure or on ID-W-UB brackets for 800 mm wide enclosures
- Usage: available for enclosures with a minimum depth of 250 mm and a width of 600 and 800 mm
- Material: 2 mm zinc-plated sheet steel
- Rail width: 56 mm
- Package includes: 19" fixed extrusions and all necessary assembly parts

Code	For cabinet H (mm)	Package
ID-W-U12	600 (12U)	1 set
ID-W-U17	800 (17U)	1 set

1 set = 2 pcs

## MOUNTING PLATE

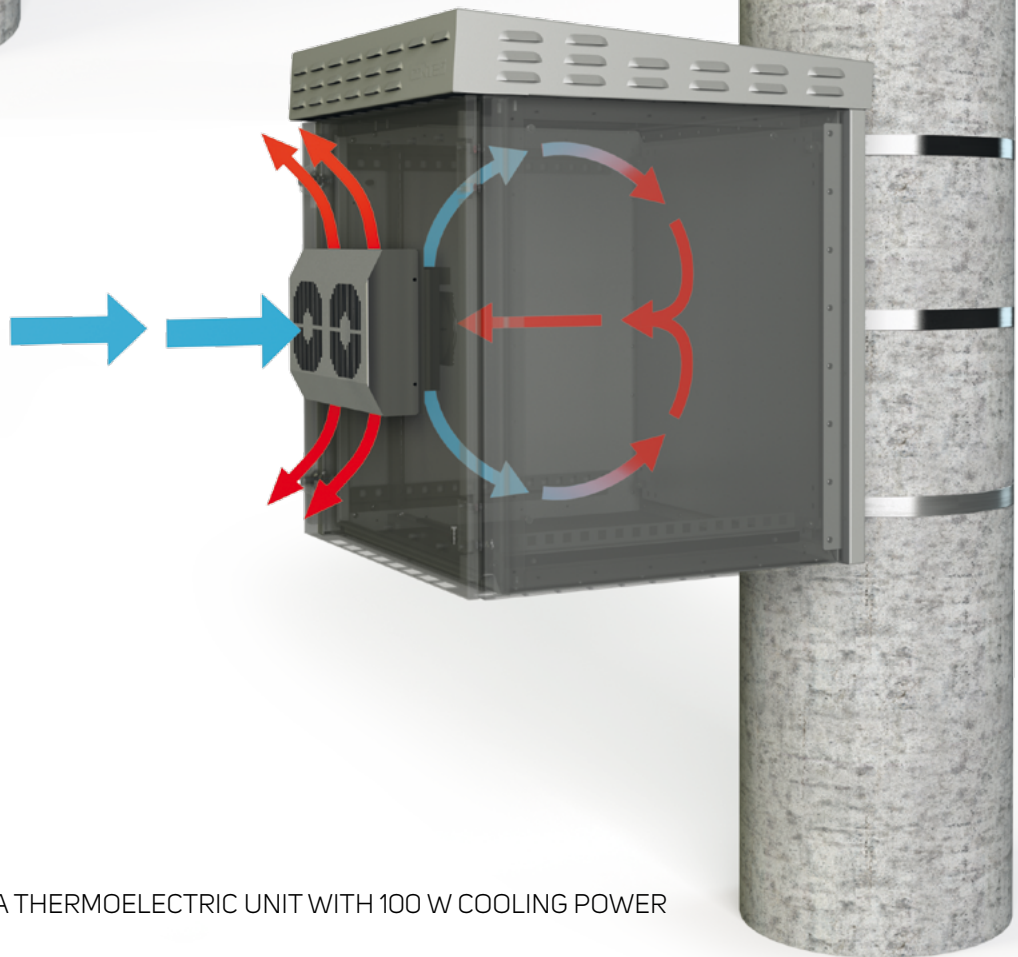
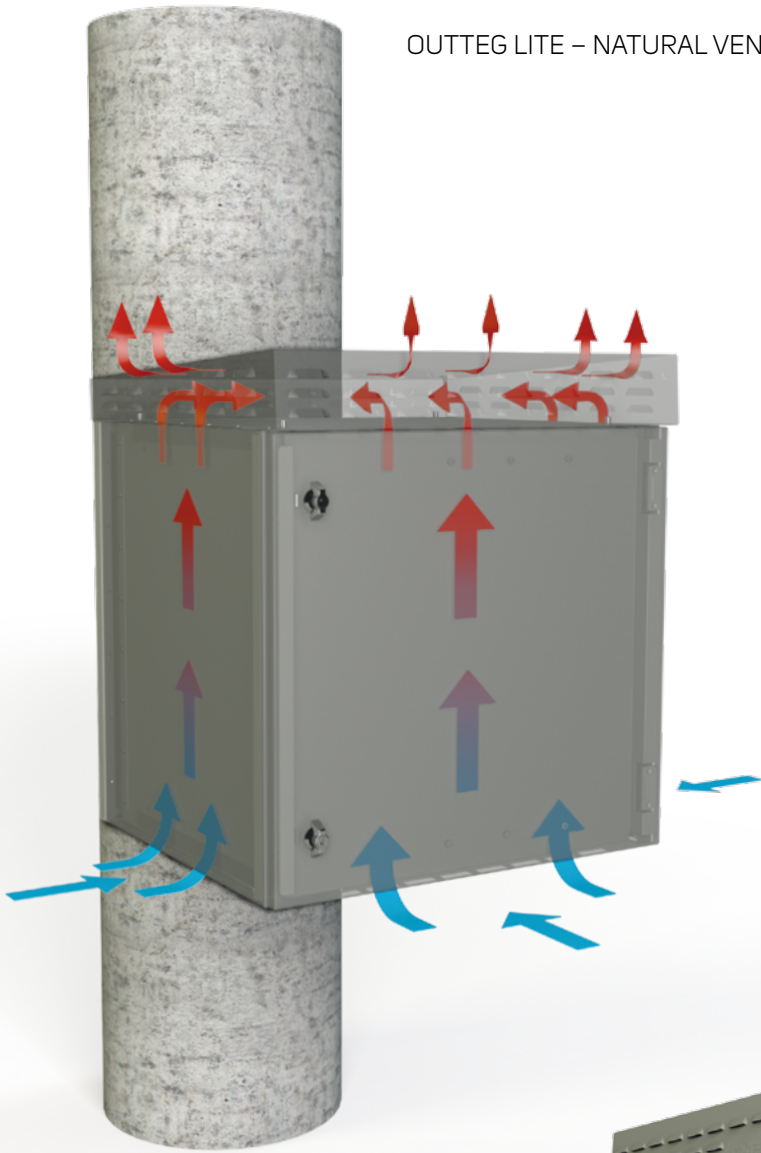


- Material: zinc-plated sheet steel
- Package includes: Mounting plate with a labeled 50x50 mm raster (assembly parts are included in enclosure accessories)

Code	For cabinet H×W (mm)	Material thickness (mm)	Package
ID-W-SP5040	500×400	2,5	1 pc
ID-W-SP6060	600×600	2,5	1 pc
ID-W-SP8060	800×600	3 F	1 pc

3 F - 3mm mounting plate with 2 bended edges

OUTTEG LITE – NATURAL VENTILATION



OUTTEG LITE –  
ASSEMBLED WITH A THERMOELECTRIC UNIT WITH 100 W COOLING POWER



03

inTEG WME  
COMPACT  
ENCLOSURES





**inTEG WME-O**

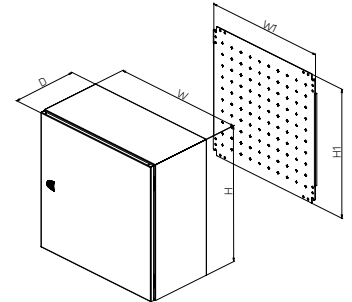
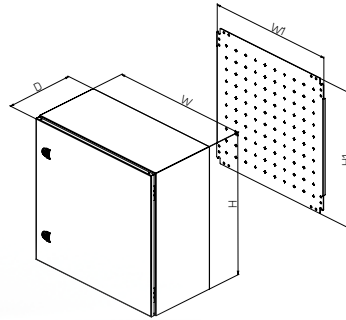
32


**Accessories**

34

# inTEG WME COMPACT ENCLOSURES

## OUTDOOR



COLOR SAMPLER:  RAL 7035

### DESCRIPTION:

#### Material

- Enclosure: stainless steel 1.4016 (AISI 403), stainless steel version 1.4301 (AISI 304) upon request
- Mounting plate: zinc-plated sheet steel

#### Enclosure surface finish

- polyester-powder coat

#### Color

- RAL 7035 for outdoor use

#### Degree of protection

- IP66 according to EN 60 529 (IP protection may be changed by installing additional accessories)

#### Mechanical protection

- IK10 according to IEC 62262

#### Package includes

- Single-door compact enclosure. Door comes with a PUR non-porous gasket and a cam lock(s) or a 3-point system for enclosures with a minimum height of 1000 mm
- Perforated mounting rails on door(s) available for enclosures with a minimum height of 500 mm
- Perforated mounting rails on sides available for enclosures with a minimum depth of 250 mm

- Mounting plate with a labeled 50×50 mm raster
- 5 mm double-bar, for more options visit page 35
- Accessories for wall mounting
- Clear design without any cable gland
- Optional: customized cut-outs prepared in our Modification center

For detailed information see page 50

### COMPACT ENCLOSURE, SINGLE DOOR,

		300	300	300	400	400	400	500
Enclosure	H (mm)	300	300	300	400	400	400	500
	W (mm)	200	300	400	300	300	400	400
	D (mm)	155	210	210	155	210	210	210
Mounting plate	H1 (mm)	270	270	270	370	370	370	470
	W1 (mm)	150	250	350	250	250	350	350
Material thickness (mm)	Enclosure	1,25	1,25	1,25	1,25	1,25	1,25	1,25
	Door	1,5	1,5	1,5	1,5	1,5	1,5	1,5
	Mounting plate	2	2	2	2	2	2,5	2,5
Quantity	Hinge	2	2	2	2	2	2	2
	Cam lock	1	1	1	1	1	1	1
	Bolts	4	4	4	4	4	4	4
Weight (kg)		3,9	6,1	7,7	6,9	7,6	9,5	11,3
Code	1 pc	WME-O-030215	WME-O-030321	WME-O-030421	WME-O-040315	WME-O-040321	WME-O-040421	WME-O-050421

### ACCESSORIES

Door-mounting rails	1 set	-	-	-	-	-	-	ID-W-VD4
Rain canopy	1 pc	ID-W-R2015	ID-W-R3020	ID-W-R4020	ID-W-R3015	ID-W-R3020	ID-W-R4020	ID-W-R4020
Pole mounting brackets	1 set	ID-W-MP2	ID-W-MP3	ID-W-MP4	ID-W-MP3	ID-W-MP3	ID-W-MP4	ID-W-MP4

COMPACT ENCLOSURE, SINGLE DOOR								
Enclosure	H (mm)	500	500	600	600	600	600	800
	W (mm)	500	500	400	600	600	600	600
	D (mm)	210	300	300	210	300	400	250
Mounting plate	H1 (mm)	470	470	570	570	570	570	770
	W1 (mm)	450	450	350	550	550	550	550
Material thickness (mm)	Enclosure	1,25	1,25	1,5	1,5	1,5	1,5	1,5
	Door	1,5	1,5	1,5	1,5	1,5	1,5	2
	Mounting plate	2,5	2,5	2,5	2,5	2,5	2,5	3 F
Quantity	Hinge	2	2	2	2	2	2	2
	Cam lock	1	1	2	2	2	2	2
	Bolts	4	4	4	4	4	4	4
Weight (kg)		13,7	15,5	16,8	20,3	22,8	25,9	29,2
Code	1 pc	WME-O-050521	WME-O-050503	WME-O-060403	WME-O-060621	WME-O-060603	WME-O-060604	WME-O-080625

#### ACCESSORIES

Rails for interior installation	1 set	-	ID-W-H5	ID-W-H6	-	ID-W-H6	ID-W-H6	ID-W-H8
Door-mounting rails	1 set	ID-W-VD5	ID-W-VD5	ID-W-VD4	ID-W-VD6	ID-W-VD6	ID-W-VD6	ID-W-VD6
19" fixed extrusions	1 set	-	-	-	-	ID-W-U12	ID-W-U12	ID-W-U17
Plinth*	Front and rear	1 set	-	-	-	ID-W-SPF60	ID-W-SPF60	-
	Side	1 set	-	-	-	ID-W-SPS30	ID-W-SPS40	-
Rain canopy	1 pc	ID-W-R5020	ID-W-R5030	ID-W-R4030	ID-W-R6020	ID-W-R6030	ID-W-R6040	ID-W-R6025
Pole mounting brackets	1 set	ID-W-MP5	ID-W-MP5	ID-W-MP4	ID-W-MP6	ID-W-MP6	ID-W-MP6	ID-W-MP6

3 F - 3 mm mounting plate with 2 bended edges

\* Plinth stainless steel, 100 mm in height, RAL 7046

COMPACT ENCLOSURE, SINGLE DOOR								
Enclosure	H (mm)	800	800	800	1000	1000	1200	1200
	W (mm)	600	600	800	600	600	600	800
	D (mm)	300	400	300	300	400	300	400
Mounting plate	H1 (mm)	770	770	770	970	970	1170	1170
	W1 (mm)	550	550	750	550	550	550	750
Material thickness (mm)	Enclosure	1,5	1,5	1,5	1,5	1,5	1,5	1,5
	Door	2	2	2	2	2	2	2
	Mounting plate	3 F	3 F	3 FF	3 F	3 F	3 F	3 FF
Quantity	Hinge	2	2	2	3	3	3	3
	Cam lock	2	2	2	-	-	-	-
	3-point locking system	-	-	-	+	+	+	+
	Bolts	4	4	4	4	4	6	6
Weight (kg)		31,7	35,2	40,2	38,4	42,4	45	62
Code	1 pc	WME-O-080603	WME-O-080604	WME-O-080803	WME-O-100603	WME-O-100604	WME-O-120603	WME-O-120804

#### ACCESSORIES

Rails for interior installation	1 set	ID-W-H8	ID-W-H8	ID-W-H8	ID-W-H10	ID-W-H10	ID-W-H12	ID-W-H12
Door-mounting rails	1 set	ID-W-VD6	ID-W-VD6	ID-W-VD8	ID-W-VD6	ID-W-VD6	ID-W-VD6	ID-W-VD8
19" fixed extrusions	1 set	ID-W-U17	ID-W-U17	ID-W-U17*	ID-W-U21	ID-W-U21	ID-W-U25	ID-W-U25*
Plinth**	Front and rear	1 set	ID-W-SPF60	ID-W-SPF60	ID-W-SPF80	ID-W-SPF60	ID-W-SPF60	ID-W-SPF80
	Side	1 set	ID-W-SPS30	ID-W-SPS40	ID-W-SPS30	ID-W-SPS30	ID-W-SPS40	ID-W-SPS40
Rain canopy	1 pc	ID-W-R6030	ID-W-R6040	ID-W-R8030	ID-W-R6030	ID-W-R6040	ID-W-R6030	ID-W-R8040
Pole mounting brackets	1 set	ID-W-MP6	ID-W-MP6	-	ID-W-MP6	ID-W-MP6	ID-W-MP6	-

3 F - 3 mm mounting plate with 2 bended edges

3 FF - 3 mm mounting plate with 4 bended edges

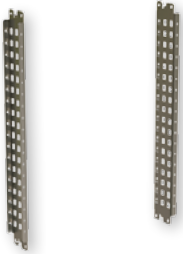
\* Order also the ID-W-UB bracket

\*\* Plinth stainless steel, 100 mm in height, RAL 7046

# inTEG WME COMPACT ENCLOSURES

## ACCESSORIES

### RAILS FOR INTERIOR INSTALLATION



- Installation: on interior vertical rails which are part of an enclosure
- Usage: available for enclosures with a minimum depth of 250 mm
- Material: 2 mm zinc-plated sheet steel with 25 mm perforation
- Rail width: 75 mm
- Package includes: 2 pcs of rails for interior installation and all necessary assembly parts

Code	For cabinet H (mm)	Package
ID-W-H5	500	1 set
ID-W-H6	600	1 set
ID-W-H7	700	1 set
ID-W-H8	800	1 set
ID-W-H10	1000	1 set
ID-W-H12	1200	1 set

1 set = 2 pcs

### 19" FIXED EXTRUSIONS



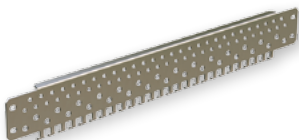
- Installation: on interior rails which are part of an enclosure or on ID-W-UB brackets for 800 mm wide enclosures
- Usage: available for enclosures with a minimum depth of 250 mm and width of 600 and 800 mm
- Material: 2 mm zinc-plated sheet steel
- Rail width: 56 mm
- Package includes: 19" fixed extrusions and all necessary assembly parts

Code	For cabinet H (mm)	Package
ID-W-U12	600 (12U)	1 set
ID-W-U17	800 (17U)	1 set
ID-W-U21	1000 (21U)	1 set
ID-W-U25	1200 (25U)	1 set

1 set = 2 pcs

For enclosures with a width of 800 mm order also the ID-W-UB bracket

### DOOR-MOUNTING RAILS



- Installation: on interior rails which are part of an enclosure
- Usage: available for enclosures with a minimum height of 500 mm
- Material: 2 mm zinc-plated sheet steel
- Rail width: 56 mm
- Package includes: rails and all necessary assembly parts

Code	For cabinet W (mm)	Package
ID-W-VD4	400	1 set
ID-W-VD5	500	1 set
ID-W-VD6	600	1 set
ID-W-VD8	800	1 set

1 set = 2 pcs

## LOCKS/LOCK INSERTS



Double bar



Square



Triangular

Code	Description	Material	Package
ID-W-INLK	T handle with lock for inTEG WME, key 5333	chrome-plated zamak	1 set*
ID-W-INLK1	Lock for inTEG WME, key 444	chrome-plated zamak	1 set*
ID-W-INLK2	Lock for inTEG WME, unique key	chrome-plated zamak	1 set*
ID-W-INLK3	Lock for inTEG WME, key 5333	chrome-plated zamak	1 set*
ID-W-IND3	3 mm "Double bit"	black zamak	1 pc
ID-W-IND5	5 mm "Double bar"	black zamak	1 pc
ID-W-INS6	6 mm square	black zamak	1 pc
ID-W-INS7	7 mm square	black zamak	1 pc
ID-W-INS8	8 mm square	black zamak	1 pc
ID-W-INT7	7 mm triangular	black zamak	1 pc
ID-W-INT8	8 mm triangular	black zamak	1 pc
ID-W-INT9	9 mm triangular	black zamak	1 pc
ID-W-INLKE1	Lock VW1	chrome-plated	1 pc

\* Complete set of metal lock with key

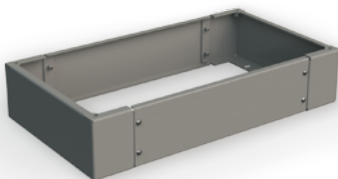
## WALL-MOUNTING BRACKETS



- Material: 3 mm stainless steel
- Load: 100 kg
- Package includes: wall-mounting brackets and all necessary assembly parts for mounting to an enclosure

Code	Package
ID-W-WB	4 pcs

## PLINTH



- Height: 100 mm
- Material: 2 mm stainless steel 1.4016 (AISI 403)
- Surface finish: polyester-powder coat
- Color: RAL 7046, RAL 7035
- For complete plinth you have to order ID-x-SPSxx and ID-x-SPFxx
- Package includes: plinths and all necessary assembly parts

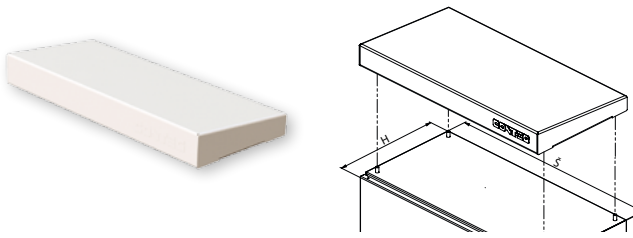
PLINTH inTEG WME-O – SIDE KIT			
Code	For cabinet D (mm)	Color	Package
ID-W-SPS30	300	RAL 7046	1 set
ID-W-SPS40	400	RAL 7046	1 set
ID-W-SPS30G	300	RAL 7035	1 set
ID-W-SPS40G	400	RAL 7035	1 set

1 set includes: 2x side part, mounting accessories

PLINTH inTEG WME-O – FRONT AND REAR KIT			
Code	For cabinet W (mm)	Color	Package
ID-W-SPF60	600	RAL 7046	1 set
ID-W-SPF80	800	RAL 7046	1 set
ID-W-SPF60G	600	RAL 7035	1 set
ID-W-SPF80G	800	RAL 7035	1 set

1 set includes: 1x front part, 1x rear part, mounting accessories

## RAIN CANOPY



- Material: 2 mm aluminum sheet AIMg3
- Surface finish: polyester-powder coat
- Color: RAL 7035
- Mounting: direct on the top, 4× M6 screws
- Optional direction of the roof slope
- Cut-outs for installation in CONTEG Modification Center
- Package includes: rain canopy and all necessary assembly parts

Code	For cabinet W×D (mm)
ID-W-R2015	200×155
ID-W-R3015	300×155
ID-W-R3020	300×210
ID-W-R4015	400×155
ID-W-R4020	400×210
ID-W-R4030	400×300
ID-W-R5020	500×210
ID-W-R5030	500×300
ID-W-R6020	600×210
ID-W-R6025	600×250
ID-W-R6030	600×300
ID-W-R6040	600×400
ID-W-R8030	800×300
ID-W-R8040	800×400

## POLE-MOUNTING BRACKETS



- Material: 2 mm stainless steel
- Installation: for poles with diameter up to 250 mm
- Load: 200 kg
- Package includes: pole-mounting brackets and all necessary assembly parts (2 profile rails, 2 clamping straps (l=850 mm), 8 set: screws M8 × 12, self-locking nuts and washers adhesion)

Code	For cabinet W (mm)
ID-W-MP2	200
ID-W-MP3	300
ID-W-MP4	400
ID-W-MP5	500
ID-W-MP6	600

## DOOR STOP



- Material: 2 mm zinc-plated sheet steel
- Usage: available for enclosures with a minimum height of 500 mm and depth of 250 mm
- Package includes: door stop and all necessary assembly parts

Code	Package
ID-W-DS	1 pc

## DOOR SWITCH



- Material – brackets: 2 mm zinc-plated sheet steel
- Door switch: IP65, plastic, 1NO + 1NC, PG13,5, - 25°C to +70°C
- Usage: available for enclosures with a minimum height of 500 mm and depth of 250 mm
- Package includes: door switch and all necessary assembly parts

Code	Package
ID-W-DC	1 pc

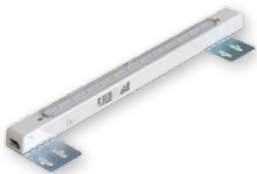
## POCKET FOR DOCUMENTS



- Material: ABS
- Color: RAL 7035
- Dimensions: 234×241×31 mm (H×W×D)
- Mounting: with self-adhesive tape
- Package includes: plastic pocket for documents and adhesive tape

Code	Package
ID-PO-A4	1 pc

## LIGHTING UNIT



- Degree of protection: IP20
- Mounting: on mounting plate or inner side rails
- LED technology, 12 light spots
- Dimensions: 400×26×27 mm (W×H×D)
- Package includes: lighting unit and inter/connection cables
- Bracket for installation on mounting plate. Depth adjustment is possible.

Code	Description	Package
ID-W-L	3W, 230 W, 50 Hz	1 pc

## EARTHING



- ID-W-EK: complete earthing kit for enclosure
- ID-W-EW68 / EW88 / EW8816: 300 mm cable length with crimped lugs
- Set includes: nuts, screws for earthing door(s), an enclosure and a mounting plate

Code	Description	Package
ID-W-EK	Complete earthing kit inTEG WME	1 set
ID-W-EW68	Grounding wires M6, M8 (door, enclosure), cross-section 10 mm <sup>2</sup>	10 pcs
ID-W-EW88	Grounding wires M8, M8 (enclosure, mounting plate), cross-section 10 mm <sup>2</sup>	10 pcs
ID-W-EW8816	Grounding wires M8, M8 (enclosure, mounting plate), cross-section 16 mm <sup>2</sup>	10 pcs

## BAYING KIT FOR inTEG WME



- Sealing material: polyethylene foam PNO1
- Sealing: 15 mm wide and 10 mm thick
- Meets protection degree IP55
- Cutouts in CONTEG Modification Center
- Package includes: Baying kit and all necessary assembly parts

Code	Minimum enclosure panel dimensions H×D (mm)	External gasket dimension H×W (mm)	Maximum cut-out H×W (mm)	Package
ID-W-ROW4030	400×300	320×220	240×140	1 set
ID-W-ROW4040	400×400	320×320	240×240	1 set
ID-W-ROW6025	600×250	520×170	440×90	1 set
ID-W-ROW6030	600×300	520×220	440×140	1 set
ID-W-ROW6040	600×400	520×320	440×240	1 set
ID-W-ROW7025	700×250	620×170	540×90	1 set
ID-W-ROW7030	700×300	620×220	540×140	1 set
ID-W-ROW7040	700×400	620×320	540×240	1 set

## CABLE GLANDS AND NUTS WITH PG/METRIC THREAD



Code	Description	Thread size	Ø cable (mm)	Package
ORO-PG7N	Cable entry Pg7	Pg7	2,5 – 6,5	10 pcs
ORO-PG9N	Cable entry Pg9	Pg9	3 – 8	5 pcs
ORO-PG11N	Cable entry Pg11	Pg11	4 – 10	5 pcs
ORO-PG13N	Cable entry Pg13	Pg13	5,5 – 12	5 pcs
ORO-PG16N	Cable entry Pg16	Pg16	8,5 – 14	5 pcs
ORO-PG21N	Cable entry Pg21	Pg21	11 – 18	5 pcs
ORO-PG29N	Cable entry Pg29	Pg29	17 – 25	5 pcs
ORO-PG36N	Cable entry Pg36	Pg36	22 – 33	1 pc
ORO-PG42N	Cable entry Pg42	Pg42	28 – 38	1 pc
ORO-PG48N	Cable entry Pg48	Pg48	32 – 44	1 pc
ORO-ZPG7N	Plastic nut Pg7	Pg7	–	10 pcs
ORO-ZPG9N	Plastic nut Pg9	Pg9	–	5 pcs
ORO-ZPG11N	Plastic nut Pg11	Pg11	–	5 pcs
ORO-ZPG13N	Plastic nut Pg13	Pg13	–	5 pcs
ORO-ZPG16N	Plastic nut Pg16	Pg16	–	5 pcs
ORO-ZPG21N	Plastic nut Pg21	Pg21	–	5 pcs
ORO-ZPG29N	Plastic nut Pg29	Pg29	–	5 pcs
ORO-ZPG36N	Plastic nut Pg36	Pg36	–	1 pc
ORO-ZPG42N	Plastic nut Pg42	Pg42	–	1 pc
ORO-ZPG48N	Plastic nut Pg48	Pg48	–	1 pc
ORO-M12N	Cable entry M12x1,5	M12x1,5	2,5 – 6,5	10 pcs
ORO-M16N	Cable entry M16x1,5	M16x1,5	4,5 – 10	5 pcs
ORO-M20N	Cable entry M20x1,5	M20x1,5	7 – 13	5 pcs
ORO-M25N	Cable entry M25x1,5	M25x1,5	10 – 17	5 pcs
ORO-M32N	Cable entry M32x1,5	M32x1,5	17 – 25	5 pcs
ORO-ZM12N	Plastic nut M12x1,5	M12x1,5	–	10 pcs
ORO-ZM16N	Plastic nut M16x1,5	M16x1,5	–	5 pcs
ORO-ZM20N	Plastic nut M20x1,5	M20x1,5	–	5 pcs
ORO-ZM25N	Plastic nut M25x1,5	M25x1,5	–	5 pcs
ORO-ZM32N	Plastic nut M32x1,5	M32x1,5	–	5 pcs

- Material: Polyamide PA6, sealing CR (neoprene)
- Degree of protection: IP68
- Color: RAL 7035

## MEMBRANE ENTRY



- Material: polyamid / elastomer, UL-94 Vo, self-extinguishing
- Protection: IP64
- Instalation: cut-outs into cable glands
- Cut-outs for installation in CONTEG Modification Center
- Package includes: Membrane 1 pc


Code	Dimensions W x D (mm)	Cables	Package
ID-W-ME24/19	142x44	12x max Ø 6,5 mm; 7x Ø 2,1 mm	1 pc
ID-W-ME24/48	142x44	48x max Ø 6,5 mm	1 pc



Do you need a custom solution? Use services from our Modification Center

---



 For more information, please contact our sales or technical team at [www.conteg.com/contacts](http://www.conteg.com/contacts)

The background features a teal color palette with various geometric shapes and patterns. On the left, there is a vertical strip showing a close-up of a building's facade with a grid-like structure. The rest of the background is composed of solid teal and light grey geometric shapes that create a modern, architectural feel.

04

OUTDOOR CLIMATE  
CONTROL SOLUTION



**Outdoor cooling units – External mounting position** 42

**Outdoor cooling units – Internal mounting position** 44

# OUTDOOR COOLING UNITS

## COMPACT – EXTERNAL MOUNTING POSITION



EXTERNAL MOUNTING POSITION

- Housing material: steel sheet / powder coated
- Color: RAL 7035 (light grey)
- Refrigerant: R134a
- Degree of protection:
  - Cabinet air circuit: IP56
  - Ambient air circuit: IP24
- Option: additional heater, see page 43
- Mounting: External mounting
- Certification: UL, CUL, CE
- Cut-outs for installation in CONTEG Modification Center
- Package includes: unit ready for connection

Note: Comes with ouTREG outdoor enclosures, with a cut-out as specified on the side panel or door.

OUTDOOR AIR-CONDITIONING UNITS – WALL-MOUNTED, 550 – 1000 W					
Code*		AC-WMO-05-400C	AC-WMO-07-400C	AC-WMO-09-400C	AC-WMO-10-400C
Material		sheet steel	sheet steel	sheet steel	sheet steel
Dimensions (mm)	H	830	830	830	900
	W	304	304	304	304
	D	270	270	270	270
Minimum cabinet dimensions (doors or side)	H×W, H×D	1000×500 mm	1000×500 mm	1000×500 mm	1000×500 mm
Voltage / Frequency**		230 V; 50/60 Hz ~N	230 V; 50/60 Hz ~N	230 V; 50/60 Hz ~N	230 V; 50/60 Hz ~N
Cooling capacity to DIN 3168	L35 L35	550 W	750 W	850 W	1000 W
	L35 L50	445 W	650 W	610 W	660 W
Rated power consumption	L35 L35	450 W	560 W	730 W	770 W
Max. air volume flow	Ambient air circuit	315 m³/h	315 m³/h	410 m³/h	320 m³/h
	Cabinet air circuit	165 m³/h	165 m³/h	200 m³/h	375 m³/h
Rated current	L35 L35	2,6 A	3,2 A	4,1 A	4 A
Starting current		10 A	11 A	16,5 A	16 A
Pre-Fuse T		5 A	6 A	10 A	10 A
Operating temperature range		-20 °C / +55 °C	-20 °C / +55 °C	-20 °C / +55 °C	-20 °C / +55 °C
Temperature range setting min/max		+20 °C / +50 °C	+20 °C / +50 °C	+20 °C / +50 °C	+20 °C / +50 °C
Weight		30 kg	30 kg	32 kg	38 kg
Compressor		reciprocating/piston	reciprocating/piston	reciprocating/piston	reciprocating/piston
Connection		connection terminals	connection terminals	connection terminals	connection terminals

\* Use AC-WMO-xx-x2xx for the stainless steel version

\*\* Other input voltage upon request

OUTDOOR AIR-CONDITIONING UNITS – WALL-MOUNTED, 1500 – 4000 W						
Code*		AC-WMO-15-400C	AC-WMO-20-400C	AC-WMO-25-400C	AC-WMO-30-400C	AC-WMO-40-400C
Material		sheet steel	sheet steel	sheet steel	sheet steel	sheet steel
Dimensions mm	H	1150	1150	1550	1550	1550
	W	395	395	457	457	457
	D	270	270	355	355	355
Minimum cabinet dimensions (doors or side)	H×W, H×D	1200×600 mm	1200×600 mm	1600×800 mm	1600×800 mm	1600×800 mm
Voltage/Frequency**		230 V; 50/60 Hz ~N	230 V; 50/60 Hz ~N	230 V; 50/60 Hz ~N	230 V; 50/60 Hz ~N	230 V; 50/60 Hz ~N
Cooling capacity to DIN 3168	L35 L35	1500 W	2000 W	2500 W	3000 W	4000 W
	L35L50	1220 W	1600 W	1970 W	2380 W	3180 W
Rated power consumption	L35 L35	800 W	1117 W	1030 W	1320 W	1880 W
Max. air volume flow	Ambient air circuit	655 m³/h	655 m³/h	765 m³/h	765 m³/h	990 m³/h
	Cabinet air circuit	400 m³/h	400 m³/h	950 m³/h	950 m³/h	950 m³/h
Rated current	L35L35	4,6 A	5,5 A	4,4 A	5,8 A	8,9 A
Starting current		16 A	16 A	22,5 A	30 A	50 A
Pre-Fuse T		9 A	13 A	16 A	16 A	16 A
Operating temperature range		-20 °C / +55 °C	-20 °C / +55 °C	-20 °C / +55 °C	-20 °C / +55 °C	-20 °C / +55 °C
Temperature range setting min/max		+20 °C / +50 °C	+20 °C / 50 °C	+20 °C / 50 °C	+20 °C / 50 °C	+20 °C / 50 °C
Weight		48 kg	48 kg	78 kg	75,3 kg	75,3 kg
Compressor		reciprocating/piston	reciprocating/piston	reciprocating/piston	reciprocating/piston	reciprocating/piston
Connection		connection terminals	connection terminals	connection terminals	connection terminals	connection terminals

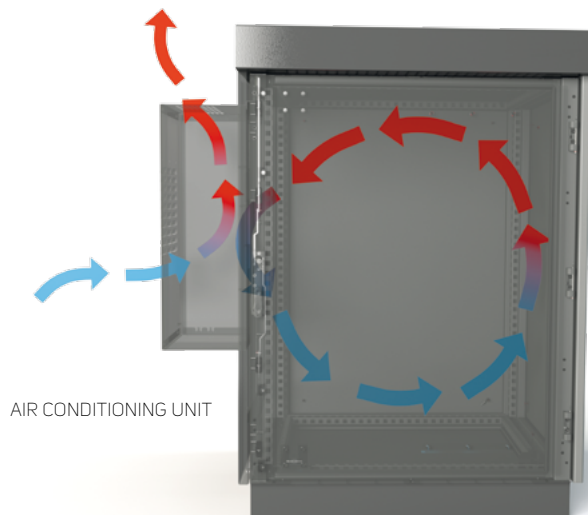
\* Use AC-WMO-xx-x2xx for the stainless steel version,

\*\* Other input voltage upon request

## COOLING UNITS WITH ADDITIONAL HEATERS

For ordering a cooling unit with an additional heater use the code AC-WMO-xx-4xHx

Code	Cooling Capacity	Heating Capacity	Temperature range	
			Cooling	Heating
AC-WMO-05-40HC	550	400	20°C / 50°C	-20°C / +20°C
AC-WMO-07-40HC	750	400	20°C / 50°C	-20°C / +20°C
AC-WMO-09-40HC	850	400	20°C / 50°C	-20°C / +20°C
AC-WMO-10-40HC	1000	400	20°C / 50°C	-20°C / +20°C
AC-WMO-15-40HC	1500	1000	20°C / 50°C	-20°C / +20°C
AC-WMO-20-40HC	2000	1000	20°C / 50°C	-20°C / +20°C
AC-WMO-25-40HC	2500	1500	20°C / 50°C	-20°C / +20°C
AC-WMO-30-40HC	3000	1500	20°C / 50°C	-20°C / +20°C
AC-WMO-40-40HC	4000	2000	20°C / 50°C	-20°C / +20°C



# COMPACT – INTERNAL MOUNTING POSITION



INTERNAL MOUNTING POSITION

- Housing material:
  - steel sheet / powder coated
  - stainless steel versions comply to NEMA 4X
- Color: RAL 7035 (light grey)
- Refrigerant: R134a
- Degree of protection
  - Cabinet air circuit: IP54
  - Ambient air circuit: IP24
- Mounting
  - External mounting
  - Internal mounting
- Certification: UL, CUL, CE
- Package includes: unit ready for connection

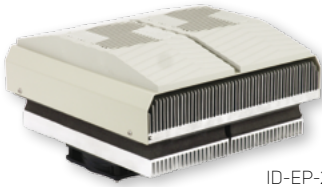
Note: Comes with outTEG outdoor enclosures, with a cut-out as specified on the side panel or door.

## OUTDOOR AIR-CONDITIONING UNITS – WALL-MOUNTED, 380 – 1500 W

Code		AC-WMO-04-400J*	AC-WMO-06-4A0I	AC-WMO-09-4A0I	AC-WMO-15-4A0I
Material		sheet steel	aluminium	aluminium	aluminium
Dimensions mm	H	600	628	890	1025
	W	320	468	385	466,5
	D	110	159	160	157
Minimum cabinet dimensions (doors or side)	H×W, H×D	800×600 mm	1000×700 mm	1200×600 mm	1200×700 mm
Voltage/Frequency		230 V; 50/60 Hz -N	230 V; 50/60 Hz -N	230 V; 50/60 Hz -N	230 V; 50/60 Hz -N
Cooling capacity to DIN 3168	L35 L35	380 W	650 W	850 W	1500 W
	L35L50	120 W	420 W	750 W	900 W
Rated power consumption	L35 L35	480 W	590 W	600 W	710 W
Max. air volume flow	Ambient air circuit	125 m³/h	360 m³/h	450 m³/h	480 m³/h
	Cabinet air circuit	80 m³/h	210 m³/h	210 m³/h	360 m³/h
Rated current	L35L35	2,4 A	2,7 A	2,4 A	3,3 A
Starting current		5,8 A	6,5 A	6,5 A	15,5 A
Pre-Fuse T		6 A	6 A	6,3 A	2×10 A
Operating temperature range		-30 °C / +55 °C	-20 °C / +55 °C	-10 °C / +50 °C	+20 °C / +50 °C *
Temperature range setting min/max		+20 °C / +50 °C	+20 °C / +55 °C	+20 °C / +50 °C	+10 °C / +50 °C
Degree of protection	Cabinet air circuit	IP54	IP55	IP65	IP55
	Ambient air circuit	IP24	IP44	IP44	IP44
Mounting	External	yes	no	no	no
	Internal	yes	yes	yes	yes
Weight		15,8 kg	19,5 kg	20 kg	30 kg
Compressor		rotary	rotary	rotary	rotary
Connection		connection terminals	connection terminals	connection terminals	connection terminals

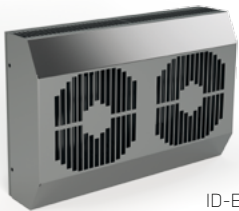
\* Use AC-WMO-xx-x2xx for the stainless steel version

# THERMOELECTRIC COOLER



ID-EP-20-1

- Material: plastic parts in PC/ABS alloy. All parts self-extinguishing, according to UL 94V-0
- Color: RAL 7035 and RAL 7032
- Degree of protection: IP55
- Electrical connection: by 4 pole Cage Clamp® connector
- Sealing: permanent sealing gasket in a closed cell foam made of polyethylene
- Regulation: ID EP-REG, for more information, please contact our technical support
- Package includes: thermoelectric cooling unit ready for connection



ID-EP-10X-1

- Material: stainless steel housing
- Degree of protection: IP66
- Sealing: permanent sealing gasket in closed cell foam made of polyethylene
- Connection via a terminal block
- Regulation: for more information, please contact our technical support
- Package includes: thermoelectric cooling unit ready for connection



ID-PS-120-41

## THERMOELECTRIC COOLER, COOLING POWER 200 W

Code		ID-EP-20-1
Dimensions (mm)	H	320
	W	310
	D	188 (100 mm outside of the cabinet)
Cooling power		200 W
Heating power		200 W
Voltage		24 V DC
Rated voltage range		17-27 V DC
Rated current		9,2 A
Max current		11,1 A
Rated Temp. Range		-20 °C / +70 °C
Weight		12 kg
Regulator		ID-EP-REG
Power supply		ID-PS-240-41

## THERMOELECTRIC COOLER, COOLING POWER 100 W

Code		ID-EP-10X-1
Dimensions (mm)	H	200
	W	304
	D	138 (73,9 mm outside of the cabinet)
Cooling power		100 W
Heating power		100 W
Voltage		24 V DC
Rated voltage range		17-27 V DC
Rated current		4,8 A
Max current		7,4 A
Rated Temp. Range		-20 °C / +65 °C
Weight		5,9 kg
Power supply		ID-PS-120-41

## POWER SUPPLIES FOR THERMOELECTRIC UNITS

Code		ID-PS-240-41	ID-PS-120-41
Dimensions (mm)	H	125	125
	W	60	60
	D	140	113
Power		240 W	120 W
Input Voltage		110-240 VAC 90 - 350 VDC	110-240 VAC 90 - 350 VDC
Output Voltage		24 V DC	24 V DC
Current		10 A	5 A
Weight		0,9 kg	0,62 kg
Mounting position		DIN rail	DIN rail
Rated Temp. Range		-40 °C / +70 °C	-40 °C / +70 °C



CONTROL CABINET -  
FOOTBALL WORLD CHAMPIONSHIP 2018

## HEATERS



- Material: aluminum profile
- Technology: PTC, self regulating
- ID-EH-80F-4: two heating circuits
- Ingress protection: IP20
- Instalation: snap-on fixing on DIN rail 35 mm EN 50022
- Package includes: heater ready for connection

HEATER		
Code	ID-EH-25PF-4	ID-EH-80F-4
Thermal output (W)	250	450 / 800
Number of heating circuits	1	2
Operation voltage (VAC)	230	230
Operating temperature range (°C)	-10 °C / +50 °C	-40 °C / +60 °C
Dimension (mm)	H	193
	W	61,5
	D	85
Fan	Airflow (m3/h)	-
	Operation voltage (VAC)	230
Weight (kg)	0,7	0,8
Electrical connection	3 poles terminal	6 poles terminal

## THERMOSTAT FOR COOLING AND HEATING



- Sensor element: thermostatic bi-metal
- Maximum tolerance:  $\pm 4$  K
- Switching difference (hysteresis) is  $7\text{ }^{\circ}\text{C} \pm 3$  K
- Switching capacity (max. load):
  - 15 A resistive/2 A inductive @ 120 V AC
  - 10 A resistive/2 A inductive @ 120 V AC
  - DC 30 W

- Connections: 2-pole terminal for AWG 14 max. (2,5 mm<sup>2</sup>)
- Mounting: clip for 35 mm DIN rail
- Dimensions (H×W×D): 55×33×43 mm
- Setting temperature range: 0 to +60 °C
- Operating temperature: -20 to +80 °C
- Weight: 40 g

- Thermostat for cooling – contact normally open
- Thermostat for heating – contact normally closed
- Package includes: Thermostat ready for connection

THERMOSTAT FOR COOLING (NO)	
Code	Package
ID-EO-TC	1 pc

THERMOSTAT FOR HEATING (NC)	
Code	Package
ID-EO-TH	1 pc

## HYGROSTAT



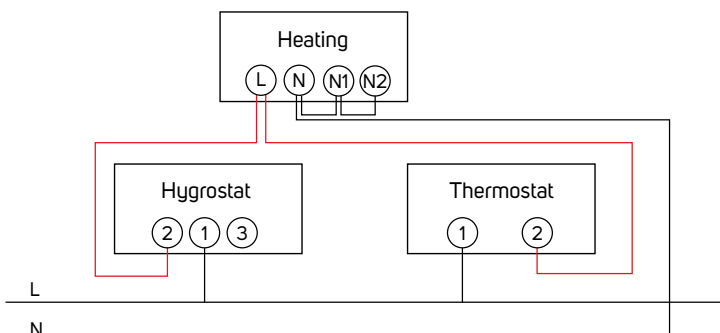
- Installation: DIN rail 35 mm
- Connection: screw terminals
- Range of humidity control: 35 – 100 % RH

- Switching capacity (max. load): 5 A / 230 V
- Switching hysteresis:  $\pm 3$  % RH
- Dimensions (H×W×D): 67×50×38 mm

- Package includes: hygrostat ready for connection

Code	Package
ID-EO-HY	1 pc

THE HEATERS CIRCUIT DIAGRAM IS CONTROLLED VIA A THERMOSTAT OR HYGROSTAT





## DRAINAGE DEVICE



- Material: plastic according to UL94 V-0, umbra grey, waterproof with UV protection
- Degree of protection: IP67
- Sealing: NBR
- Dimensions: Ø 60×49,5 mm, 17,5 mm inside enclosure
- Water flow rate: 200 ml/hour
- Mounting: vertically at the lowest point, thread M50×1.5 with nut (cut-out Ø 50 mm)
- Package includes: 1 pc of drainage device

Code	Package
ID-EO-DD	1 pc

## PRESSURE COMPENSATOR



- Mounting: PG 29 thread with union nut (cut-out diameter 37 mm)
- Fitting position: vertical (Protection type is restricted to IP54 if the fitting position of the pressure compensator is not vertical.)
- Material: plastic according to UL94 V-0, light grey RAL 7035
- Degree of protection: IP55
- Dimensions: Ø 65,5×30,5 mm
- Package includes: 2 pcs of compensator

Code	Package
ID-EO-PC	2 pcs

## VENTILATION UNITS – DP-VEN



- One to nine fans
- Possible to install: in 19" extrusions – horizontally
- Temperature range -10 °C to 55 °C
- Thermostat ranging from 0 °C to 60 °C included; no thermostat option
- Voltage range 230V/50Hz (48V DC option)
- Protection category to EN 60 529 IP20
- Color: RAL (standard RAL 9005)
- Enhanced option DP-VEN-xx-E
- Package includes: ventilation unit ready for connection

Code	Outleg grid	Airflow (m³/h)	Rated current max. (A)	Power consumption (W)	Annual power consumption* (kWh/year)	Possible heat removal** (kW)	Package
DP-VEN-03*	ID-EF-07	336	0.270	57	499	0.57	1 pc
DP-VEN-06**	ID-EF-09	672	0.540	114	999	1.14	1 pc

\* You have to order 2 pcs of ID-EF-07

\*\* You have to order 2 pcs of ID-EF-09

## OUTLET FILTER GRID

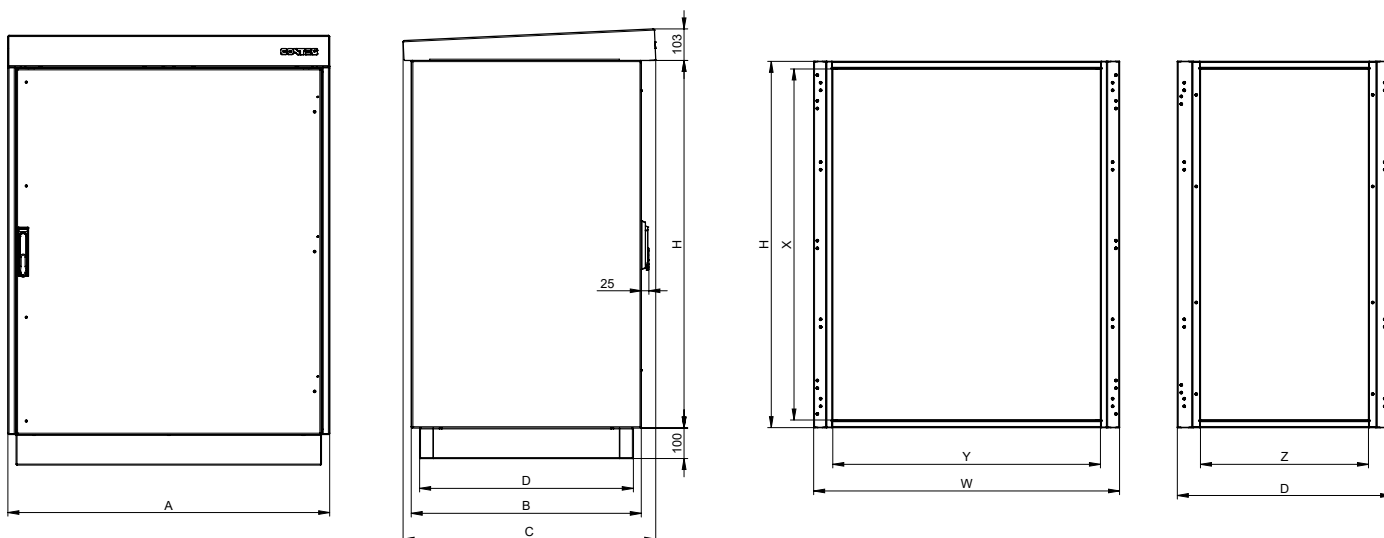


- Material: PC/ABS Alloy, PA 66 GH13 HSL for elastic clips
- Color: RAL 7035
- Degree of protection: IP54/IP55
- Package includes: unit ready for mounting

Code	For filter fan units	Package
ID-EF-07	250 x 250 mm, airflow max. 270 m³/h	1 pc
ID-EF-09	325 x 325 mm, airflow max. 800 m³/h	1 pc

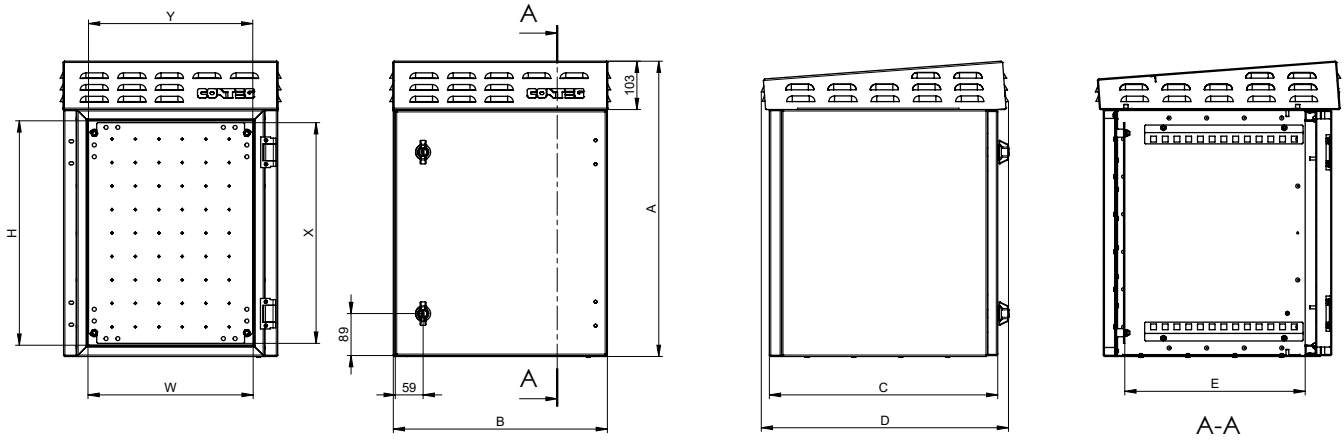
# TECHNICAL DRAWINGS

outTEG FREE-STANDING CABINET – DOUBLE-WALLED



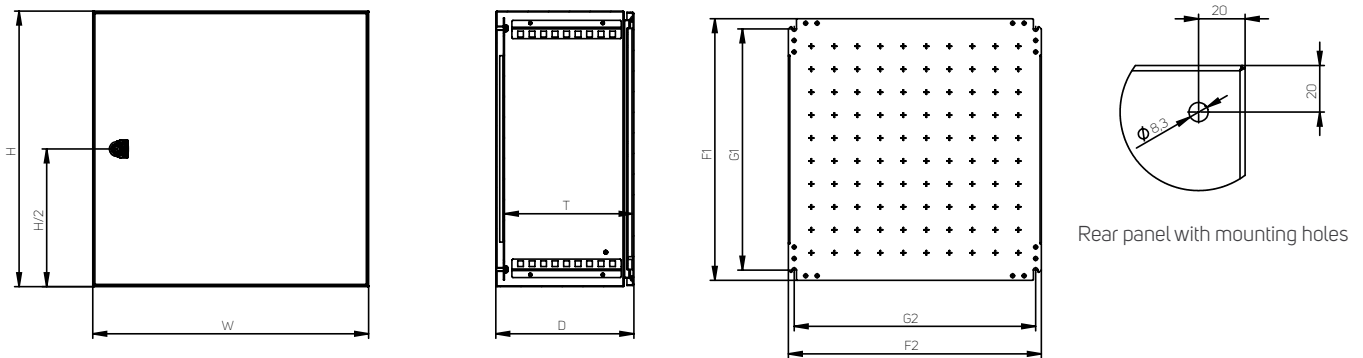
Code	Height (mm)		Width (mm)			Depth (mm)			
	H	X	W	A	Y	D	B	Z	C
OMR-DN-066506-R	600	550	652	704	527	602	654	450	728
OMR-DN-086506-R	800	750	652	704	527	602	654	450	728
OMR-DN-106506-R	1000	950	652	704	527	602	654	450	728
OMR-DN-100805-R	1000	950	802	854	677	502	554	350	628
OMR-DN-120808-R	1200	1150	802	854	677	802	854	650	928
OMR-DN-121007-R	1200	1150	1002	1054	877	702	754	550	828
OMR-DN-146506-R	1400	1350	652	704	527	602	654	450	728
OMR-DN-166504-R	1600	1550	652	704	527	402	454	250	528
OMR-DN-160807-R	1600	1550	802	854	677	702	754	550	828
OMR-DN-160810-R	1600	1550	802	854	677	1002	1054	850	1128
OMR-DN-161008-R	1600	1550	1002	1054	877	802	854	650	928

outTEG LITE POLE MOUNT CABINET – DOUBLE-WALLED



Code	Height (mm)		Width (mm)		Depth (mm)			Mounting plate (mm)	
	A	H	B	W	C	D	E	X	Y
OMR-DL-500x400x400	630	478	456	352	487	527	384,5	470	350
OMR-DL-600x600x500	730	578	656	556	587	627	484,5	570	550
OMR-DL-600x600x600	730	578	656	556	687	727	584,5	570	550
OMR-DL-800x600x500	930	778	656	556	587	627	484,5	770	550
OMR-DL-800x600x600	930	778	656	556	687	727	584,5	770	550

inTEG COMPACT ENCLOSURE – OUTDOOR, SINGLE-DOOR WITH 3-POINT LOCK SYSTEM



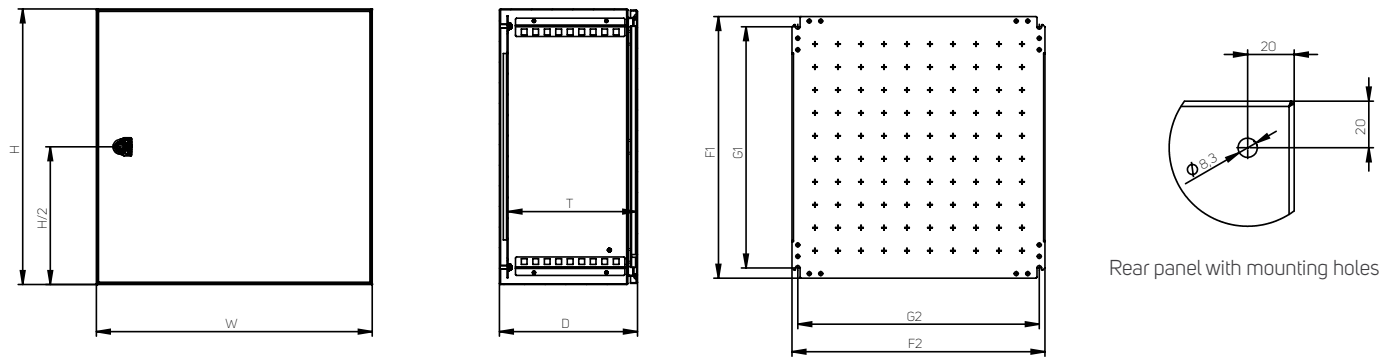
Code	Height (mm)	Width (mm)	Depth (mm)		Mounting plate (mm)				Material thickness (mm)		
	H	W	D	T*	F1	F2	G1	G2	Enclosure	Door	Mounting plate
WME-O-100603	1000	600	300	280	970	550	925	525	2,0	2,0	3 F
WME-O-100604	1000	600	400	380	970	550	925	525	2,0	2,0	3 F
WME-O-120603	1200	600	300	280	1170	550	1125	525	2,0	2,0	3 F
WME-O-120804	1200	800	400	380	1170	750	1125	725	2,0	2,0	3 FF

3 F - 3mm mounting plate with 2 bended edges

3 FF - 3mm mounting plate with 4 bended edges

\* T indicates the depth between the mounting plate and the inside of the door, door trim reduces this value by 17 mm and lock by 31 mm.

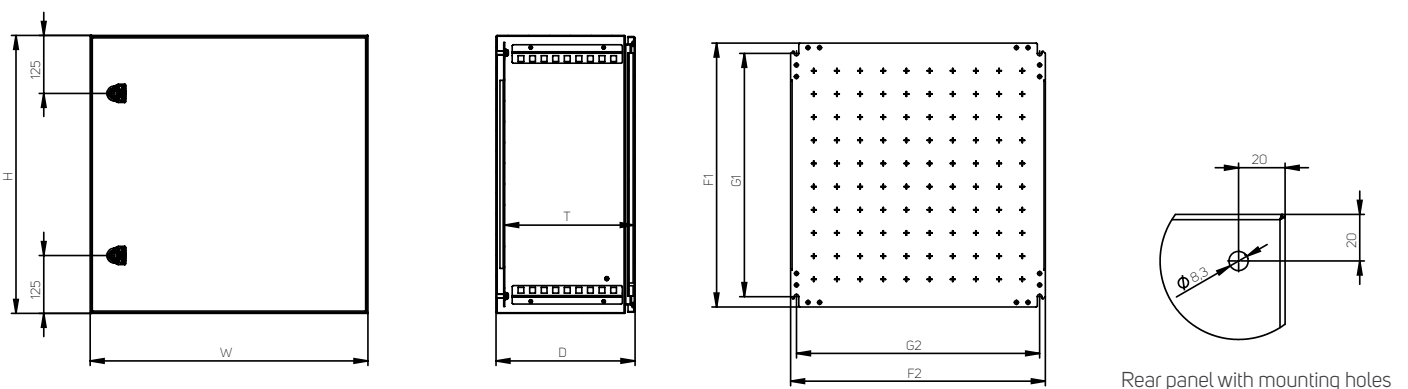
## inTEG COMPACT ENCLOSURE – OUTDOOR, SINGLE-DOOR WITH ONE CAM LOCK



Code	Height (mm)	Width (mm)	Depth (mm)		Mounting plate (mm)				Material thickness (mm)		
	H	W	D	T*	F1	F2	G1	G2	Enclosure	Door	Mounting plate
WME-O-030215	300	200	155	135	270	150	225	125	1,25	1,5	2,0
WME-O-030321	300	300	210	190	270	250	225	225	1,25	1,5	2,0
WME-O-030421	300	400	210	190	270	350	225	325	1,25	1,5	2,0
WME-O-040315	400	300	155	135	370	250	325	225	1,25	1,5	2,0
WME-O-040321	400	300	210	190	370	250	325	225	1,25	1,5	2,0
WME-O-040421	400	400	210	190	370	350	325	325	1,25	1,5	2,5
WME-O-050421	500	400	210	190	470	350	425	325	1,25	1,5	2,5
WME-O-050521	500	500	210	190	470	450	425	425	1,25	1,5	2,5
WME-O-050503	500	500	300	280	470	450	425	425	1,25	1,5	2,5
WME-O-060403	600	400	300	280	570	350	525	325	1,50	2,0	2,5
WME-O-060621	600	600	210	190	570	550	525	525	1,50	2,0	2,5
WME-O-060603	600	600	300	280	570	550	525	525	1,50	2,0	2,5
WME-O-060604	600	600	400	380	570	550	525	525	1,50	2,0	2,5

\* T indicates the depth between the mounting plate and the inside of the door, door trim reduces this value by 17 mm and lock by 31 mm.

## inTEG COMPACT ENCLOSURE – OUTDOOR, SINGLE-DOOR WITH TWO CAM LOCKS



Code	Height (mm)	Width (mm)	Depth (mm)		Mounting plate (mm)				Material thickness (mm)		
	H	W	D	T*	F1	F2	G1	G2	Enclosure	Door	Mounting plate
WME-O-080625	800	600	250	230	770	550	725	525	2,0	2,0	3 F
WME-O-080603	800	600	300	280	770	550	725	525	2,0	2,0	3 F
WME-O-080604	800	600	400	380	770	550	725	525	2,0	2,0	3 F
WME-O-080803	800	800	300	280	770	750	725	725	2,0	2,0	3 FF

3 F - 3mm mounting plate with 2 bended edges

3 FF - 3mm mounting plate with 4 bended edges

\* T indicates the depth between the mounting plate and the inside of the door, door trim reduces this value by 17 mm and lock by 31 mm.

# HEATING DISSIPATION

outTEG – FREE-STANDING CABINET, DOUBLE-WALLED, MEASURING CABINET INSIDE,  $\Delta T=15\text{ K}$ , WIND SPEED 0 M/S

Code	H (mm)	W (mm)	D (mm)	Material thickness (mm)		Surface (m <sup>2</sup> )	Effective area* (m <sup>2</sup> )	Heating dissipation (W)
				Body	Door			
OMR-DN-066506-R	600	650	600	2,00		2,28	1,60	64,08
OMR-DN-086506-R	800	650	600	2,00		2,78	2,06	82,57
OMR-DN-106506-R	1000	650	600	2,00		3,28	2,52	101,05
OMR-DN-100805-R	1000	800	500	2,00		3,40	2,62	105,17
OMR-DN-120808-R	1200	800	800	2,00		5,12	4,01	161,22
OMR-DN-121007-R	1200	1000	700	2,00		5,48	4,30	172,67
OMR-DN-146506-R	1400	650	600	2,00		4,28	3,44	138,01
OMR-DN-166504-R	1600	650	400	2,00		3,88	3,16	126,76
OMR-DN-160807-R	1600	800	700	2,00		5,92	4,83	193,96
OMR-DN-160810-R	1600	800	1000	2,00		7,36	5,98	240,37
OMR-DN-161008-R	1600	1000	800	2,00		7,36	5,98	240,37

\* Cabinet standing alone, area without bottom

outTEG LITE – POLE MOUNT CABINET, DOUBLE-WALLED, MEASURING CABINET INSIDE,  $\Delta T=15\text{ K}$ , WIND SPEED 0 M/S

Code	H (mm)	W (mm)	D (mm)	Material thickness (mm)		Surface (m <sup>2</sup> )	Effective area* (m <sup>2</sup> )	Heating dissipation (W)
				Body	Door			
OMR-DL-050404	500	400	400	2		1,12	0,88	35,16
OMR-DL-060605	600	600	500	2		1,92	1,60	64,08
OMR-DL-060606	600	600	600	2		2,16	1,82	72,92
OMR-DL-080605	800	600	500	2		2,36	2,00	80,16
OMR-DL-080606	800	600	600	2		2,64	2,26	90,60

\* Cabinet pole mounting, area without single-walled bottom

inTEG WME – COMPACT WALL MOUNT ENCLOSURE, OUTDOOR VERSION, MEASURING CABINET INSIDE,  $\Delta T=15\text{ K}$

Code	H (mm)	W (mm)	D (mm)	Material thickness (mm)		Surface (m <sup>2</sup> )	Effective area* (m <sup>2</sup> )	Heating dissipation (W)
				Body	Door			
WME-O-030215	300	200	155	1,25	1,50	0,275	0,215	14,0
WME-O-030321	300	300	210	1,25	1,50	0,432	0,342	21,8
WME-O-030421	300	400	210	1,25	1,50	0,534	0,414	27,3
WME-O-040315	400	300	155	1,25	1,50	0,457	0,337	24,1
WME-O-040321	400	300	210	1,25	1,50	0,534	0,414	27,3
WME-O-040421	400	400	210	1,25	1,50	0,656	0,496	34,1
WME-O-050421	500	400	210	1,25	1,50	0,778	0,578	40,8
WME-O-050521	500	500	210	1,25	1,50	0,920	0,670	48,8
WME-O-050503	500	500	300	1,25	1,50	1,100	0,850	56,4
WME-O-060403	600	400	300	1,50	1,50	1,080	0,840	54,5
WME-O-060621	600	600	210	1,50	1,50	1,224	0,864	65,4
WME-O-060603	600	600	300	1,50	1,50	1,440	1,080	74,3
WME-O-060604	600	600	400	1,50	1,50	1,680	1,320	84,2
WME-O-080625	800	600	250	1,50	2,00	1,660	1,180	87,8
WME-O-080603	800	600	300	1,50	2,00	1,800	1,320	93,6
WME-O-080604	800	600	400	1,50	2,00	2,080	1,600	105,2
WME-O-080803	800	800	300	1,50	2,00	2,240	1,600	118,2
WME-O-100603	1000	600	300	1,50	2,00	2,160	1,560	113,3
WME-O-100604	1000	600	400	1,50	2,00	2,480	1,880	126,5
WME-O-120603	1200	600	300	1,50	2,00	2,520	1,800	133,0
WME-O-120804	1200	800	400	1,50	2,00	3,520	2,560	183,9

\* Cabinet wall mounting, area without rear panel

# Index

CODE:	PAGE:	CODE:	PAGE:	CODE:	PAGE:
ID-EH-25PF-4	46	ID-PO-L1-4	19	OMR-DN-066506-R	8, 48, 51
ID-EH-80F-4	46	ID-PS-120-41	45	OMR-DN-086506-R	8, 48, 51
ID-EO-DD	47	ID-PS-240-41	45	OMR-DN-080804-R	51
ID-EO-HY	46	ID-W-H5	24, 28, 33-34	OMR-DV-R1007	11
ID-EO-PC	47	ID-W-H6	24, 28, 33-34	OMR-DV-R1008	11
ID-EO-TC	46	ID-W-H8	24, 28, 33-34	OMR-DV-R6504	11
ID-EO-TH	46	ID-W-MP4	24, 26, 32-33, 36	OMR-DV-R6506	11
ID-EP-10X-1	45	ID-W-MP6	24-26, 33, 36	OMR-DV-R0810	11
ID-EP-20-1	45	ID-W-SP5040	24, 28	OMR-DV-R0805	11
ID-EP-REG	45	ID-W-SP6060	24, 28	OMR-DV-R0807	11
ID-F-SPF04	24, 26	ID-W-SP8060	24, 28	OMR-DV-R0808	11
ID-F-SPF06	24, 26	ID-W-U12	24, 28, 33-34	OMR-DV-S1207	11
ID-F-x	24, 26	ID-W-U17	24, 28, 33-34	OMR-DV-S1207-54	11
ID-F-SPS05	24, 26	ID-W-WB	24-26, 35	OMR-DV-S1208	11
IDO-MF-P1007	8, 18	OMR-DCME-S1207	10	OMR-DV-S1208-54	11
IDO-MF-P1008	9, 18	OMR-DCME-S1208	10	OMR-DV-S1406	11
IDO-MF-P6504	9, 18	OMR-DCME-S1406	10	OMR-DV-S1406-54	11
IDO-MF-P6506	8-9, 18	OMR-DCME-S1610	10	OMR-DV-S1610	11
IDO-MF-P0810	9, 18	OMR-DCME-S1604	10	OMR-DV-S1610-54	11
IDO-MF-P0805	8, 18	OMR-DCME-S1607	10	OMR-DV-S1604	11
IDO-MF-P0807	9, 18	OMR-DCME-S1608	10	OMR-DV-S1604-54	11
IDO-MF-P0808	8, 18	OMR-DCME-S1005	10	OMR-DV-S1607	11
IDO-MM-F1210	8, 16	OMR-DCME-S1006	10	OMR-DV-S1607-54	11
IDO-MM-F128	8, 16	OMR-DCME-S0606	10	OMR-DV-S1608	11
IDO-MM-F1465	9, 16	OMR-DCME-S0806	10	OMR-DV-S1608-54	11
IDO-MM-F1610	9, 16	OMR-DCMI-S1207	10	OMR-DV-S1005	11
IDO-MM-F1665	9, 16	OMR-DCMI-S1208	10	OMR-DV-S1005-54	11
IDO-MM-F168	9, 16	OMR-DCMI-S1406	10	OMR-DV-S1006	11
IDO-MM-F1065	8, 16	OMR-DCMI-S1610	10	OMR-DV-S0606	11
IDO-MM-F108	8, 16	OMR-DCMI-S1604	10	OMR-DV-S0806	11
IDO-MM-F665	8, 16	OMR-DCMI-S1607	10	WME-O-120603	33, 49, 51
IDO-MM-F865	8, 16	OMR-DCMI-S1608	10	WME-O-120804	33, 49, 51
IDO-MR-E12	8, 14	OMR-DCMI-S1005	10	WME-O-100603	33, 49, 51
IDO-MR-E14	9, 14	OMR-DCMI-S1006	10	WME-O-100604	33, 49, 51
IDO-MR-E16	9, 14	OMR-DCMI-S0606	10	WME-O-030215	32, 50-51
IDO-MR-E10	8, 14	OMR-DCMI-S0806	10	WME-O-030321	32, 50-51
IDO-MR-E6	8, 14	OMR-DL-050404	24, 51	WME-O-030421	32, 50-51
IDO-MR-E8	8, 14	OMR-DL-060605	24, 51	WME-O-040315	32, 50-51
IDO-MR-H10	16	OMR-DL-060606	24, 51	WME-O-040321	32, 50-51
IDO-MR-H4	16	OMR-DL-080605	24, 51	WME-O-040421	32, 50-51
IDO-MR-H5	16	OMR-DL-080606	24, 51	WME-O-050421	32, 50-51
IDO-MR-H6	16	OMR-DN-121007-R	8, 48, 51	WME-O-050521	33, 50-51
IDO-MR-H7	16	OMR-DN-120808-R	8, 48, 51	WME-O-050503	33, 50-51
IDO-MR-H8	16	OMR-DN-146506-R	9, 48, 51	WME-O-060403	33, 50-51
IDO-MR-HH12	16	OMR-DN-161008-R	9, 48, 51	WME-O-060621	33, 50-51
IDO-MR-HH14	16	OMR-DN-166504-R	9, 48, 51	WME-O-060603	33, 50-51
IDO-MR-HH16	16	OMR-DN-160810-R	9, 48, 51	WME-O-060604	33, 50-51
IDO-MR-HH10	16	OMR-DN-160807-R	9, 48, 51	WME-O-080625	33, 50-51
IDO-MR-HH6	16	OMR-DN-106506-R	8, 48, 51	WME-O-080603	33, 50-51
IDO-MR-HH8	16	OMR-DN-100805-R	8, 48, 51	WME-O-080604	33, 50-51
IDO-MR-HW10	16	OMR-DN-K1207	8, 17	WME-O-080803	33, 50-51
IDO-MR-HW65	16	OMR-DN-K1208	8, 17		
IDO-MR-HW8	16	OMR-DN-K1406	9, 17		
IDO-MR-L10	9, 14	OMR-DN-K1610	9, 17		
IDO-MR-L4	9, 14	OMR-DN-K1604	9, 17		
IDO-MR-L5	8, 14	OMR-DN-K1607	9, 17		
IDO-MR-L6	14	OMR-DN-K1608	9, 17		
IDO-MR-L7	8-9, 14	OMR-DN-K1005	8, 17		
IDO-MR-L8	8-9, 14	OMR-DN-K1006	8, 17		
IDO-MR-N10	9, 14	OMR-DN-K0606	8, 17		
IDO-MR-N4	9, 14	OMR-DN-K0806	8, 17		
IDO-MR-N5	8, 14	OMR-DN-S1207-1	8, 10		
IDO-MR-N6	8-9, 14	OMR-DN-S1208-1	8, 10		
IDO-MR-N7	9, 14	OMR-DN-S1406-1	9-10		
IDO-MR-N8	8, 14	OMR-DN-S1610-1	9-10		
IDO-MR-N-B	14	OMR-DN-S1604-1	9-10		
IDO-MR-V12	8, 14	OMR-DN-S1607-1	9-10		
IDO-MR-V14	9, 14	OMR-DN-S1608-1	9-10		
IDO-MR-V16	9, 14	OMR-DN-S1005-1	8, 10		
IDO-MR-V10	8, 14	OMR-DN-S1006-1	8, 10		
IDO-MR-V6	8, 14	OMR-DN-S0606-1	8, 10		
IDO-MR-V8	8, 14	OMR-DN-S0806-1	8, 10		

# Conteg – industrial enclosures

Conteg offers a complete range of inTEG industrial enclosures, which meet all requirements, even for applications in the most demanding industrial environments. In our portfolio you can find everything from compact sheet steel enclosures to freestanding enclosures suitable for baying in a row. You can choose among many different sizes and four types of materials, depending on the area of the application. Both enclosure series provide a high degree of protection. inTEG industrial enclosures are produced in our modern production plant in Pelhřimov (Czech Republic) using the latest technological processes, which ensure first-class operation, mechanical resistance and durability.



For more information, please contact our sales or technical team [www.conteg.com/contacts](http://www.conteg.com/contacts)

www.conteg.com



**CONTEG, spol. s r.o.**

**Headquarters:**

Na Vitezne plani 1719/4  
140 00 Prague 4  
Czech Republic  
Tel.: +420 261 219 182  
conteg@conteg.com  
www.conteg.com

**Production plant:**

K Silu 2179  
393 01 Pelhrimov  
Czech Republic  
Tel.: +420 565 300 300

**Local Branches / Offices:**

Austria / Germany / Switzerland:	+420 261 219 182
Benelux:	+31 76 5420 709
Southeastern Europe:	+49 172 8484 346
Finland:	+358 50 414 1257
France / Italy / Maghreb:	+33 1 60 04 55 90
Middle East / Saudi Arabia:	+966 54 000 2341
Russia / CIS:	+7 495 967 3840

Although this catalog was prepared, produced and checked with the best of care, Conteg, spol. s r.o. cannot accept any liability for omissions or errors in this publication. Due to continuous development and progress, Conteg, spol. s r.o. also reserves the right to change the product details and technical specifications shown in this catalog. Such changes, along with eventual errors or printing errata, shall not constitute grounds for compensation.

Your supplier