



# Utility grade infrastructure solutions

Pushing what's possible by converging  
information technology and operational technology

COMMScope®

# Smart buildings. Smart investment.

Interconnected technologies make smart buildings more efficient, secure, reliable and agile—ultimately improving their performance. The challenge lies in creating an integrated suite of connectivity solutions without adding layers of complexity and cost. Success starts with a superior infrastructure that's flexible enough to scale and integrate tomorrow's technologies while managing multiple systems that require advanced power distribution, more bandwidth, and seamless connectivity.



Bridging the gap between  
information technology (IT) and  
operational technology (OT)

## Introducing Utility Grade INFRASTRUCTURE<sup>SM</sup>

Utility Grade INFRASTRUCTURE (UTG) is a new technology platform, assurance program and design approach that unlocks a smart building's full potential by redefining the infrastructure layer to support building subsystems, technologies and applications.

### The UTG program includes:

- Utility-ready structured cabling solutions from CommScope
- Advanced power delivery through definite testing of UTG-rated cabling solutions
- Third party verification of all claims by UL

UTG provides a single converged infrastructure platform that pushes the possibilities in smart building performance by bridging the gap between information technology (IT) and operational technology (OT). Building owners, operators and managers can navigate seamlessly between a broad range of technologies while improving network reliability and performance cost-effectively.

UTG enhances  
productivity, flexibility,  
efficiency, network  
reliability, physical  
network security and  
user experience.



# Wiring for the future—managing for the present

CommScope worked alongside Anixter, UL and other industry leaders to develop UTG performance standards and UTG-rated infrastructure cabling solutions that support diverse applications, systems and devices on a common network. These future-ready solutions are flexible and adaptive to changing business needs—surpassing the boundaries of traditional cabling standards.

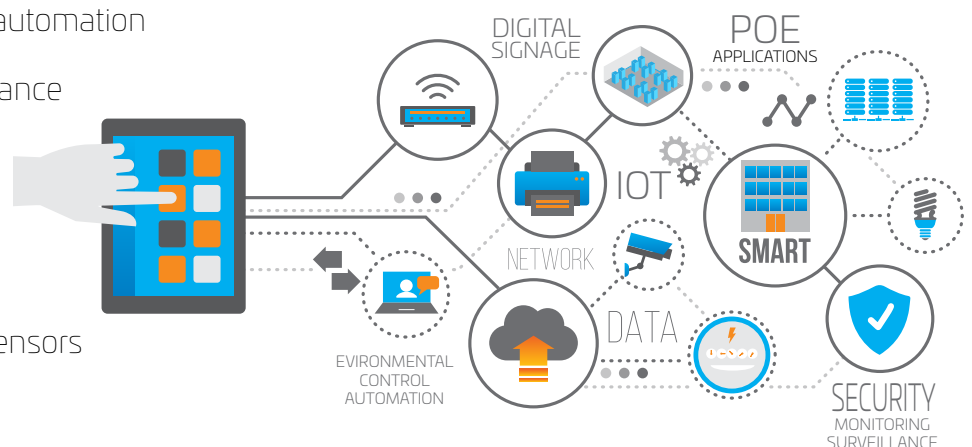
## The technology of tomorrow

UTG supports emerging and enhanced technologies, including building environmental control automation, security monitoring and surveillance, digital signage systems, enhanced power over ethernet (POE) applications, and internet of things devices and sensors. Managing multiple systems on one robust platform accelerates efficiencies, increases business intelligence, strengthens cybersecurity, enhances productivity, optimizes performance and reduces operational costs.

The UTG program, in conjunction with CommScope's UTG solutions, provide important insights and propels next-generation buildings with robust cabling solutions, new power delivery methods, comprehensive warranty and application assurance, and comprehensive service and support.

## UTG supports emerging and enhanced technologies

- Building environmental control automation
- Security monitoring and surveillance
- Digital signage systems
- Enhanced power over ethernet (POE) applications
- Internet of things devices and sensors



## Benefits of a utility grade infrastructure solution

- Supports IT and OT needs
- Delivers optimal scalability and flexibility
- Reduces strain on infrastructure
- Increases structured cabling lifespan
- Meets productivity and efficiency demands
- Improves network reliability and reduces costs
- Enhances user experience
- Provides optimal bandwidth for applications, systems and devices
- Advanced power distribution
- Infrastructure management and security

# UTG-rated cabling solutions

CommScope offers two UTG-rated solutions that allow you to scale and integrate tomorrow's smart building technology today. Select the solution that best meets your application, infrastructure lifecycle and performance needs. All of our solutions are backed by a reliable, responsive network of manufacturing, logistics and expertise.

## THE UTG DIFFERENCE

UL independently tests and verifies our UTG ratings for optimal application assurance and design on a single building platform. UTG uses real-world, definitive application testing, as well as industry-first UTG-exclusive testing protocols. Based on UL's testing, CommScope's UTG solutions outperform non-UTG cabling.

## OUR UTG SOLUTIONS:

- Exceeds industry standards
- Support extended transmission distances
- Support next-generation Wi-Fi technology
- Deliver higher bandwidth capabilities
- Support 4K streaming at extended distances
- Increase bundling for more POE applications
- Support higher frames per second and lower compression with video surveillance
- Provides consistent wireless coverage at extended distances
- Reduce square footage and construction costs



## A universal solution at scale

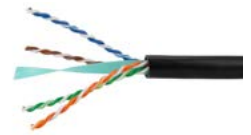
CommScope is proud to lead the way in providing the solutions you need—quickly, reliably and economically. CommScope's consistency, availability and manufacturing scale enable us to deliver expertise and technology that is always pushing what's possible.

Our UTG-rated infrastructure cabling is backed by CommScope's 25-year assurance warranty as detailed in our CommScope Performance Specifications document. With CommScope, you can be confident that your converged IT and OT technologies, applications and systems will be ready to meet productivity and efficiency demands while maximizing return on investment and enhancing connectivity cost-effectively.

Take advantage of your building's full potential with utility grade (UTG) infrastructure solutions from CommScope.



Take advantage of your building's full potential with utility grade (UTG) infrastructure solutions from CommScope.



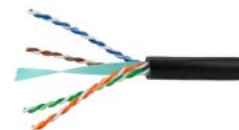
## UTG10 cable solutions

Part Number	Description	Environment	Euroclass	Color
UTG760250764	1071E-UTG SLT C6 4/23 U/UTP W1000	CMR	-	slate
UTG760250765	1071E-UTG LBL C6 4/23 U/UTP W1000	CMR	-	light blue
UTG760250766	1071E-UTG BLU C6 4/23 U/UTP W1000	CMR	-	blue
UTG760250767	1071E-UTG WHT C6 4/23 U/UTP W1000	CMR	-	white
UTG760250768	1071E-UTG SGR C6 4/23 U/UTP W1000	CMR	-	spring green
UTG760250769	1071E-UTG RED C6 4/23 U/UTP W1000	CMR	-	red
UTG760250770	1071E-UTG YEL C6 4/23 U/UTP W1000	CMR	-	yellow
UTG760250771	1071E-UTG ORG C6 4/23 U/UTP W1000	CMR	-	orange
UTG760250772	1071E-UTG BLK C6 4/23 U/UTP W1000	CMR	-	black
UTG760245085	2071E-UTG BLU C6 4/23 U/UTP W1000	CMP	-	blue
UTG760245103	2071E-UTG WHT C6 4/23 U/UTP W1000	CMP	-	white
UTG760245099	2071E-UTG SLT C6 4/23 U/UTP W1000	CMP	-	slate
UTG760245096	2071E-UTG SGR C6 4/23 U/UTP W1000	CMP	-	spring green
UTG760245106	2071E-UTG YEL C6 4/23 U/UTP W1000	CMP	-	yellow
UTG760245091	2071E-UTG ORG C6 4/23 U/UTP W1000	CMP	-	orange
UTG760245082	2071E-UTG BLK C6 4/23 U/UTP W1000	CMP	-	black
UTG760245094	2071E-UTG RED C6 4/23 U/UTP W1000	CMP	-	red
UTG760250746	3071E-C-UTG WHT C6 4/23 U/UTP W1000	LSZH	Cca-s1a, d1, a1	white
UTG760250747	3071E-UTG WHT C6 4/23 U/UTP W1000	LSZH	Dca-s2, d2, a1	white
UTG760250748	3071E-UTG SLT C6 4/23 U/UTP W1000	LSZH	Dca-s2, d2, a1	slate
UTG760250749	3071E-UTG BLU C6 4/23 U/UTP W1000	LSZH	Dca-s2, d2, a1	blue
UTG760250750	3071E-UTG YEL C6 4/23 U/UTP W1000	LSZH	Dca-s2, d2, a1	yellow

# UTG10 connectivity solutions



UTG-10 Solutions	Product Name	Product Details		Manufacturer Material ID	Manufacturer Product Number
MGS400 jack	SYSTIMAX 360™ GIGASPEED XL MGS400	Category 6 information outlet	black	700206667	MGS400-003
			orange	700206683	MGS400-112
			yellow	700206691	MGS400-123
			green	700206709	MGS400-226
			white	700206725	MGS400-262
			red	700206741	MGS400-317
			blue	700206758	MGS400-318
			ivory	700206717	MGS400-246
GS3 panels	GIGASPEED XL 1100GS3 panels	24-port evolve patch panel	760152561	360-IPR-1100-E-GS3-1U-24	
		48-port evolve patch panel	760152579	360-IPR-1100-E-GS3-2U-48	
		24-port evolve angled patch panel	760151308	360-IPR-1100A-E-GS3-1U-24	
		48-port evolve angled patch panel	760151753	360-IPR-1100A-E-GS3-2U-48	
		Label sheet for 360 and universal panels, US letter	760183244	360 and UNP Label Sheet US LTR	
		Label sheet for 360 and universal panels, A4	760186502	360 and UNP Label Sheet A4	
	GIGASPEED XL PATCHMAX® GS3 panels	24-port patch panel	760102244	360-PM-GS3-2U-24	
		48-port patch panel	760117366	360-PM-GS3-2U-48	
		Label Sheet for 360 and universal panels, US letter	760183244	360 and UNP Label Sheet US LTR	
		Label Sheet for 360 and universal panels, A4	760186502	360 and UNP Label Sheet A4	
GS8E patch cord	SYSTIMAX 360GS8E Modular patch cords	GS8E stranded cordage modular patch cord	CPC3312	GS8E	
		GS8E solid plenum cable modular cord	CPC3372	GS8E-SP	
		GS8E single-ended solid cable	CPC3482	GS8E117-S	
		GS8E single end solid plenum modular cord	CPC3472	GS8E117-SP	
		GS8E stranded cordage LSZH modular patch cord	CPC3392	GS8E-L	
		GS8E single ended solid LSZH modular cord	CPC3422	GS8E117-SL	
MiNo6 patch cord*		MiNo6 reduced diameter Cat 6 LS-CM patch cord	CO166S2	MiNo6	



## UTG20 cable solutions

Part Number	Description	Environment	Euroclass	Color
UTG760250787	1091B-UTG SLT C6A 4/23 U/UTP W1000	CMR	-	slate
UTG760250788	1091B-UTG BLU C6A 4/23 U/UTP W1000	CMR	-	blue
UTG760250789	1091B-UTG WHT C6A 4/23 U/UTP W1000	CMR	-	white
UTG760250790	1091B-UTG PNK C6A 4/23 U/UTP W1000	CMR	-	pink
UTG760250791	1091B-UTG YEL C6A 4/23 U/UTP W1000	CMR	-	yellow
UTG760250792	1091B-UTG ORG C6A 4/23 U/UTP W1000	CMR	-	orange
UTG760250793	1091B-UTG BLK C6A 4/23 U/UTP W1000	CMR	-	black
UTG760250794	1091B-UTG LBL C6A 4/23 U/UTP W1000	CMR	-	light blue
UTG760250795	1091B-UTG GRN C6A 4/23 U/UTP W1000	CMR	-	green
UTG760245113	2091B-UTG BLU C6A 4/23 U/UTP W1000	CMP	-	blue
UTG760245130	2091B-UTG WHT C6A 4/23 U/UTP W1000	CMP	-	white
UTG760245134	2091B-UTG YEL C6A 4/23 U/UTP W1000	CMP	-	yellow
UTG760245109	2091B-UTG BLK C6A 4/23 U/UTP W1000	CMP	-	black
UTG760245116	2091B-UTG GRN C6A 4/23 U/UTP W1000	CMP	-	green
UTG760245127	2091B-UTG SLT C6A 4/23 U/UTP W1000	CMP	-	slate
UTG760245119	2091B-UTG ORG C6A 4/23 U/UTP W1000	CMP	-	orange
UTG760250730	3091B-C-UTG WHT C6A 4/23 U/UTP W1000	LSZH	Cca-s1a, d1, a1	white
UTG760250731	3091B-UTG WHT C6A 4/23 U/UTP W1000	LSZH	Dca-s2, d2, a1	white
UTG760250732	3091B-UTG SLT C6A 4/23 U/UTP W1000	LSZH	Dca-s2, d2, a1	slate
UTG760250733	3091B-UTG BLU C6A 4/23 U/UTP W1000	LSZH	Dca-s2, d2, a1	blue
UTG760250734	3091B-UTG BLK C6A 4/23 U/UTP W1000	LSZH	Dca-s2, d2, a1	black
UTG760250735	3091B-UTG YEL C6A 4/23 U/UTP W1000	LSZH	Dca-s2, d2, a1	yellow
UTG760250736	3091B-UTG GRN C6A 4/23 U/UTP W1000	LSZH	Dca-s2, d2, a1	green

# UTG20 connectivity solutions



UTG-20 Solutions	Product Name	Product Details		Manufacturer Material ID	Manufacturer Product Number
MGS600 jack	SYSTIMAX 360™ GIGASPEED X10D MGS600	Category 6A information outlet	black	760092361	MGS600-003
			orange	760092379	MGS600-112
			yellow	760092387	MGS600-123
			green	760092403	MGS600-226
			ivory	760092411	MGS600-246
			white	760092429	MGS600-262
			gray	760092437	MGS600-270
			red	760092445	MGS600-317
			blue	760092452	MGS600-318
GS6 panels	GIGASPEED X10D 1100GS6 panels	24-port evolve patch panel		760152587	360-IPR-1100-E-GS6-1U-24
		48-port evolve patch panel		760152595	360-IPR-1100-E-GS6-2U-48
		24-port evolve angled patch panel		760151324	360-IPR-1100A-E-GS6-1U-24
		48-port evolve angled patch panel		760151779	360-IPR-1100A-E-GS6-2U-48
		label sheet for 360 and universal panels, us letter		760183244	360 and UNP Label Sheet US LTR
		label sheet for 360 and universal panels, a4		760186502	360 and UNP Label Sheet A4
	GIGASPEED X10D PATCHMAX GS6 panels	24-port patch panel		760102251	360-PM-GS6-2U-24
		48-port patch panel		760128207	360-PM-GS6-2U-48
		label sheet for 360 and universal panels, us letter		760183244	360 and UNP Label Sheet US LTR
		label sheet for 360 and universal panels, a4		760186502	360 and UNP Label Sheet A4
GS10E patch cord	SYSTIMAX 360GS10E modular patch cords	360GS10E	solid cordage	CPCSSX2	360GS10E
			solid plenum cordage	CPCSSY2	360GS10E-P
			single-ended solid cordage	CPCS4X2	360GS10E117
			Solid LSZH cordage	CPCSSZ2	360GS10E-L
			Single ended solid SLZH cordage	CPCS4Z2	360GS10E117-L
MiNo6A patch cord*		MiNo6A reduced diameter Cat 6A LS-CM patch cord		CO199K2	MiNo6A



CommScope pushes the boundaries of communications technology with game-changing ideas and ground-breaking discoveries that spark profound human achievement. We collaborate with our customers and partners to design, create and build the world's most advanced networks. It is our passion and commitment to identify the next opportunity and realize a better tomorrow. Discover more at [commscope.com](https://commscope.com)

**COMMSCOPE®**

---

[commscope.com](https://commscope.com)

Visit our website or contact your local CommScope representative for more information.

© 2020 CommScope, Inc. All rights reserved.

Utility Grade INFRASTRUCTURE (UTG) is a Service Mark of Anixter Inc. Unless otherwise noted, all trademarks identified by ® or ™ are registered trademarks, respectively, of CommScope, Inc. This document is for planning purposes only and is not intended to modify or supplement any specifications or warranties relating to CommScope products or services. CommScope is committed to the highest standards of business integrity and environmental sustainability with a number of CommScope's facilities across the globe certified in accordance with international standards, including ISO 9001, TL 9000, and ISO 14001. Further information regarding CommScope's commitment can be found at [www.commscope.com/About-Us/Corporate-Responsibility-and-Sustainability](https://www.commscope.com/About-Us/Corporate-Responsibility-and-Sustainability).

BR-113675.1-EN (11/20)