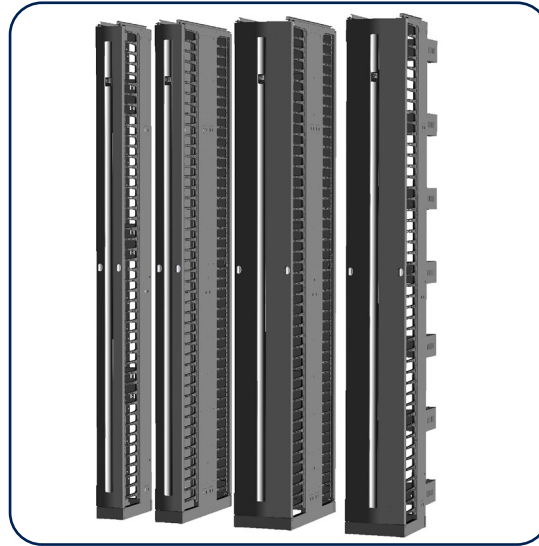




CHATSWORTH
PRODUCTS

Evolution[®] Cable Management System

Evolution[®] Cable Management System is a reliable, feature-rich cable management solution with faster deployment times that delivers increased performance to match the demands of today's high-density data center applications.



New Tool-Less Accessories

- Movable Mid-Section Kit
- Tool-Less & Adjustable Cable Distribution Spool

KEY FEATURES

- Tool-Less & Adjustable Cable Distribution Spools provide slack management and strain relief for patch cords and jumper cables inside Evolution Vertical Cable Managers
- Movable Mid-Section Kit for double-sided managers allows for increased flexibility in space utilization and reduces installation time from minutes to seconds
- Door on vertical cable manager opens to the right or left with a single latch
- T-shaped cable guide design resists deflection when loaded with cables
- Rounded edges on the cable guides and at the top of the cable manager protect cables as they enter and exit the storage space
- Rigid trough minimizes movement when installed on the end of a row of racks

SPECIFICATIONS

Description	
	<ul style="list-style-type: none"> • Vertical and Horizontal Cable Managers for open Rack Systems • For indoor use only, in environmentally controlled areas; may not be used outdoors, in harsh environments or in air-handling spaces
	<p>Evolution Single-Sided Vertical Cable Manager includes:</p> <ul style="list-style-type: none"> • Contoured front door with easy-open latches and vertical center feature in contrasting aluminum finish • Rigid cable manager with 1U spaced plastic T-shaped cable guides • Three Fixed Accessory Panels at the back of the cable manager • Three Tool-Less & Adjustable Cable Distribution Spools included with 10"W (250 mm), 12"W (300 mm) and 15"W (380 mm) managers
	<p>Evolution Double-Sided Vertical Cable Manager includes:</p> <ul style="list-style-type: none"> • Contoured front door with easy-open latches and vertical center feature in contrasting aluminum finish • Rigid cable manager with 1U spaced plastic T-shaped cable guides • Rear door with easy-open latches and all black finish • Three Movable Mid-Section panels • Three Tool-Less & Adjustable Cable Distribution Spools included with 10"W (250 mm), 12"W (300 mm) and 15"W (380 mm) managers
Cable Manager Options Include	<p>Evolution Combination Vertical Cable Manager includes:</p> <ul style="list-style-type: none"> • Contoured front door with easy-open latches and vertical center feature in contrasting aluminum finish • Adjustable rear cable rings with new plastic design that protects cables better, comes with removable latching gate; on the back side (no rear door/cover) • Three Tool-Less & Adjustable Cable Distribution Spools included with 10"W (250 mm), 12"W (300 mm) and 15"W (380 mm) managers
	<p>Evolution Horizontal Cable Manager includes:</p> <ul style="list-style-type: none"> • Contoured front door with snap-hinges and longitudinal center feature in contrasting aluminum finish • Cable manager with plastic T-shaped cable guides (fingers) • (4) chassis styles: solid, with cable pass-through ports, grommets, and brushes

Availability: US, Canada, Latin America, Europe, Middle East & Africa

United States & Canada
 Simi Valley, CA
 800-834-4969
 Toronto, Ontario, Canada
 +905-850-7770
 chatsworth.com
 techsupport@chatsworth.com

Latin America
 Mexico City, Mexico
 +52-55-5203-7525
 Toll Free within Mexico
 800-201-7592
 chatsworth.com.co

Europe
 Buckinghamshire
 England, UK
 +44-1628-524-834

Middle East & Africa
 Dubai, UAE
 +971-4-2602125
 Doha, Qatar
 +974-4-267422

Asia Pacific
 Jing'an District,
 Shanghai, China
 +86 21 6880-0266
 chatsworth.com.cn

SPECIFICATIONS

Construction	Ships in a single carton; welded and riveted frame/door attaches to all CPI Rack Systems with supplied tool-less mounting hardware
Materials	Steel, aluminum, and plastic T-shaped cable guides
Finishes	Black or Glacier White powder coat paint
Packaging	Ships in a single, recyclable carton
Sizes	See ordering information
Cable Fill	See cable fill table at chatsworth.com/cablefill

USE WITH:

- Standard Rack
- Universal Rack
- QuadraRack® 4-Post Frame
- QuadraRack Server Frame
- Adjustable QuadraRack (AQR)
- Adjustable ServerRack (ASR)
- Adjustable Rail QuadraRack (ARQR)
- Adjustable Rail ServerRack (ARSR)

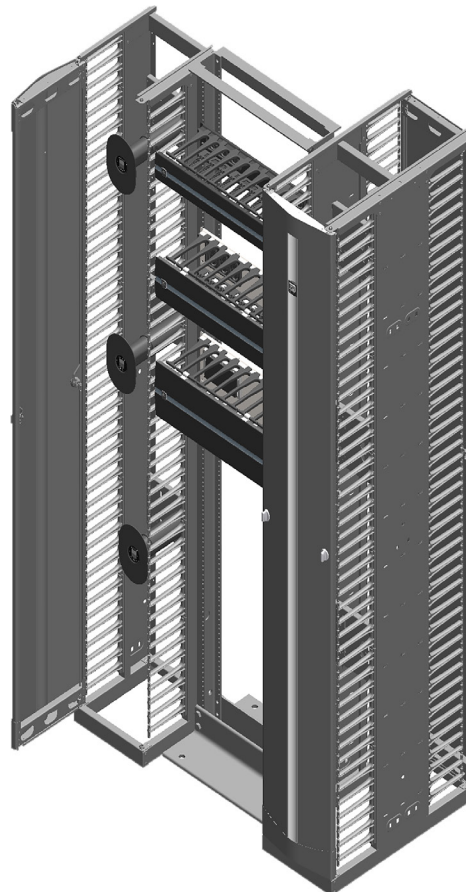
High-Performance Design

CPI Evolution Cable Management is a dependable solution for managing high-density copper cabling on open CPI Rack Systems, delivering increased performance to match the demands of today's data center applications.

Featuring easy-to-use doors with styling that complements the CPI family of cabinets, Evolution Vertical Cable Manager provides interior features to help maximize the capacity and utility of high-density vertical cable management. Evolution Vertical Cable Manager includes plastic T-shaped cable guides (fingers) with openings that align with each rack-mount unit (U) space on the rack. The rounded edges on the cable guides and the top of the manager protect cables as they enter and exit the interior storage space. On double-sided managers, the Mid-Section panels allow personalized placement of the Tool-Less & Adjustable Cable Distribution Spools and other cable management accessories to effectively route patch cords. The Movable Mid-Section panels can also be positioned for a 50/50, 40/60 or 60/40 front/rear split of the internal cable management space to match cabling requirements.

Vertical managers are available in Single-Sided, Double-Sided and Combination style configurations in five widths and three heights to match a variety of requirements. Combination managers have cable management fingers in the front and cable rings in the back.

Use accessory Fiber Segregation Kits to create a dedicated internal channel for fiber cabling or accessory Cable Lashing Bar Kits to anchor premise cables closer to the mid-sections to increase capacity. Contact CPI Technical Support, or visit the CPI website [chatsworth.com](https://www.chatsworth.com) for configuration assistance.

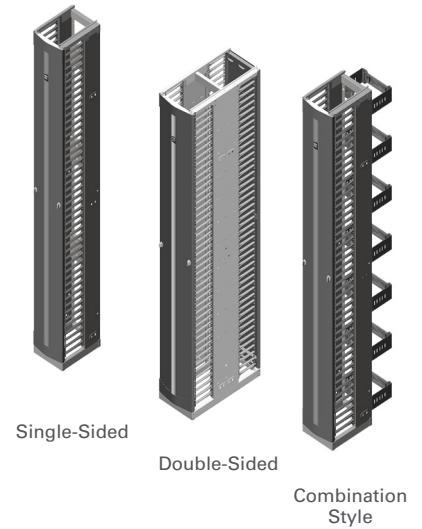


ORDERING INFORMATION

Evolution Vertical Cable Manager Part Number Matrix:

Example Part Number: 35514-703 Single-Sided, 12"W x 7"H, Black

3		5		5		Style		Width in (mm)		Color		Height ft/in (m)	
		1		Single-Sided		1		6 (150)		7		Black 03 7' (2.1)	
		2		Double-Sided		2		8 (200)		E		Glacier White 15 8' (2.4)	
		7		Combination Style		3		10 (250)				08 9' (2.7)	
						4		12 (300)					
						5		15 (380)					

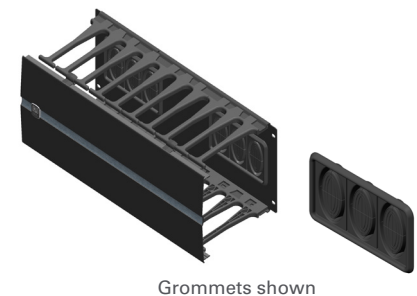
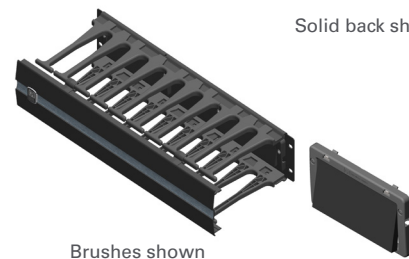


Evolution Horizontal Cable Manager

Available in four heights: 1U, 2U, 3U, 4U. The snap-on door complements the styling of Evolution Vertical Cable Manager. Open the door by swinging the cover up, down or easily remove it for easier access to cables.

Evolution Horizontal Cable Manager includes plastic T-shaped cable guides to organize patch cords and jumper cords as the cords enter and exit the manager to make individual equipment connections. Four chassis styles are available. Choose the solid, cable pass-through ports, brushes, or grommets chassis option for use in areas where thermal isolation is needed.

- Contoured, snap-on front door opens up or down and complements the styling of the Evolution Vertical Cable Manager
- Four chassis styles: solid, with cable-pass through ports, brushes or grommets
- Plastic T-shaped cable guides organize cables as they enter and exit the manager

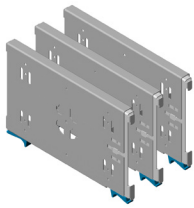


Evolution Horizontal Cable Managers			
Part Number	Chassis Style	Dimensions	Shipping Weight lb (kg)
35441-X02	With Cable Pass-Through Ports	2U X 19" EIA x 8.2" (208 mm)	4 (1.8)
35441-X03	With Cable Pass-Through Ports	3U X 19" EIA x 8.2" (208 mm)	5 (2.3)
35441-X04	With Cable Pass-Through Ports	4U X 19" EIA x 8.2" (208 mm)	7 (3.2)
35441-X01	Solid	1U X 19" EIA x 8.2" (208 mm)	3 (1.4)
35442-X02	Solid	2U X 19" EIA x 8.2" (208 mm)	4 (1.8)
35442-X03	Solid	3U X 19" EIA x 8.2" (208 mm)	5 (2.3)
35442-X04	Solid	4U X 19" EIA x 8.2" (208 mm)	7 (3.2)
33548-X02	With Brushes	2U X 19" EIA x 8.2" (208 mm)	4 (1.8)
33548-X03	With Brushes	3U X 19" EIA x 8.2" (208 mm)	5 (2.3)
33548-X04	With Brushes	4U X 19" EIA x 8.2" (208 mm)	7 (3.2)
33549-X02	With Grommets	2U X 19" EIA x 8.2" (208 mm)	4 (1.8)
33549-X03	With Grommets	3U X 19" EIA x 8.2" (208 mm)	5 (2.3)
33549-X04	With Grommets	4U X 19" EIA x 8.2" (208 mm)	7 (3.2)

Note: X=Color; 7=Black and E=Glacier White. 1U horizontal managers available with solid chassis only.

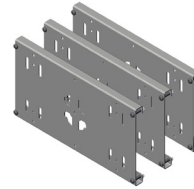
ACCESSORIES

Legacy Accessories Compatibility: For all Evolution® Vertical Cable Managers ordered prior to January 29, 2024, only legacy accessories are compatible. We strongly advise customers who have purchased these units before this date to procure and use legacy accessories for optimal performance and fit.



Movable Mid-Section Kit

- Kit includes three additional Movable Mid-Section Panels for the Evolution Double-Sided Vertical Cable Manager.
- Select to match the width of the cable manager
 - Tool-Less snap-together design (does not require mounting hardware)
 - Includes two blue latches that lock panel in place
 - Provisioned for the Tool-Less & Adjustable Cable Distribution Spool



Fixed Accessory Panel Kit

- Kit includes three additional Fixed Accessory Panels for the Evolution Single-Sided Vertical Cable Manager.
- Select to match the width of the cable manager
 - Includes installation hardware
 - Provisioned for the Tool-Less & Adjustable Cable Distribution Spool

Part Number	Description Width in (mm)	Shipping Weight lb (kg)
33493-X01	For 6 (150) Double-Sided Vertical Cable Managers	4 (1.8)
33493-X02	For 8 (200) Double-Sided Vertical Cable Managers	5 (2.3)
33493-X03	For 10 (250) Double-Sided Vertical Cable Managers	5 (2.3)
33493-X04	For 12 (300) Double-Sided Vertical Cable Managers	7 (3.2)
33493-X05	For 15 (380) Double-Sided Vertical Cable Managers	8 (3.6)

Note: X=Color; 7=Black and E=Glacier White.

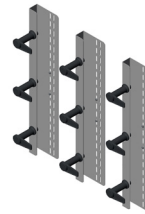
Part Number	Description Width in (mm)	Shipping Weight lb (kg)
33492-X01	For 6 (150) Single-Sided Vertical Cable Managers	4 (1.8)
33492-X02	For 8 (200) Single-Sided Vertical Cable Managers	5 (2.3)
33492-X03	For 10 (250) Single-Sided Vertical Cable Managers	6 (2.7)
33492-X04	For 12 (300) Single-Sided Vertical Cable Managers	7 (3.2)
33492-X05	For 15 (380) Single-Sided Vertical Cable Managers	8 (3.6)

Note: X=Color; 7=Black and E=Glacier White.



Tool-Less & Adjustable Cable Distribution Spool

- The Tool-Less & Adjustable Cable Distribution Spools provide slack management and strain relief for patch cords and jumper cables inside Evolution Vertical Cable Managers.
- Attaches to the Fixed Accessory Panels on the back of Single-Sided vertical cable managers and the Movable Mid-Sections inside Double-Sided vertical cable managers
 - (3) large cable distribution spools are included with each 10"W (250 mm), 12"W (300 mm) and 15"W (380 mm) vertical cable manager, (will not fit in other sizes)
 - Spools are 2.75" (69.9 mm) in diameter and 6" L - 10.25" L (150-260 mm); black plastic
 - Each kit includes 3 spools (no hardware required)



Fiber Segregation Kit

- The Fiber Segregation Kit creates a separate pathway for fiber cables and patch cords inside Evolution Vertical Cable Managers.
- The number of Fiber Segregation Kit assemblies that can be mounted in an Evolution Cable Manager depends on the manager height as follows:
 - 7' - 3
 - 8' - 3
 - 9' - 4 (requires an additional Movable Mid-Section or Fixed Accessory Panel Kit)
 - The Fiber Segregation spools turns 360° and stops at 90° allowing for easier access to fiber cables
 - Each kit includes mounting brackets, plastic spools and mounting hardware to create a separate pathway inside the vertical cable manager when assembled and installed

Part Number	Description	Shipping Weight lb (kg)
16008-001	Cable Spools, Black (Pkg of 3)	2 (0.9)

Part Number	Description	Shipping Weight lb (kg)
33475-701	Fiber Segregation Kit, Black	6 (2.7)

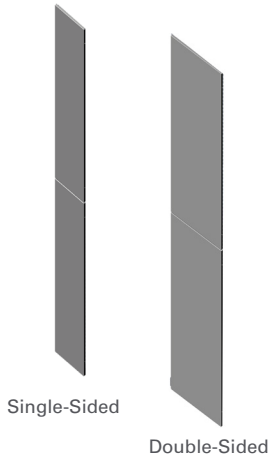
ACCESSORIES

Legacy Accessories Compatibility: For all Evolution® Vertical Cable Managers ordered prior to January 29, 2024, only legacy accessories are compatible. We strongly advise customers who have purchased these units before this date to procure and use legacy accessories for optimal performance and fit.

Two-Piece Side Panel Kits

The Two-Piece Side Panel Kits are available for both the Evolution Double-Sided and Single-Sided Vertical Cable Managers, which are typically placed at the end of a row of equipment racks.

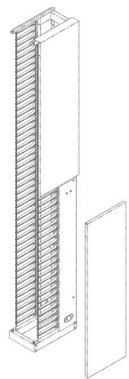
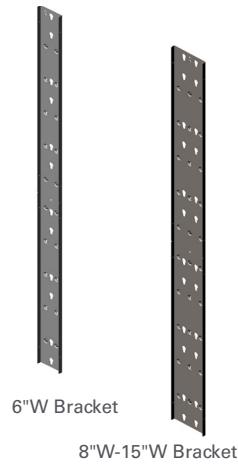
- Double-Sided Panel Kits are intended to be used with the Evolution Double-Sided Cable Managers
- Single-Sided Panel Kits are intended to be used with Evolution Single-Sided Cable Managers
- Tool-Less attachment directly to the side(s) of the Evolution Vertical Cable Manager
- Select to match the height of the cable manager



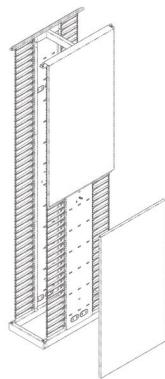
PDU Bracket Kit

The two-piece PDU Bracket Kit can be used with both the Evolution Double-Sided and Single-Sided Vertical Cable Managers. Can support one or up to two PDU's up to 2.2"W and mounts to the rear of the Fixed Accessory Panel Kit or Movable Mid-Section Kit.

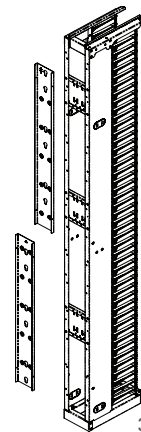
- The 6"W PDU Bracket Kit (33555-X01) attaches to the rear mounting holes on either the Single-Sided or Double-Sided Evolution Vertical Cable Managers and will support 1 PDU up to 2.2"W
- The 8"W-15"W PDU Bracket Kit (33555-X02) attaches to the rear mounting holes on either the Single-Sided or Double-Sided Evolution Vertical Cable Managers and will support two PDU's up to 2.2"W
- Select to match the width of the cable manager
- Two-Piece Design
- Mounting hardware included



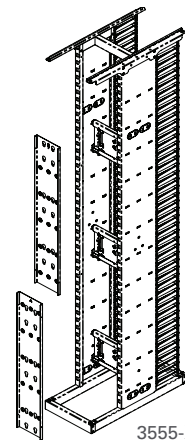
Single-Sided Installation



Double-Sided Installation



3555-X01, 6"W Installation



3555-X02, 8"-15"W Installation

Part Number		Description Height ft (M)	Shipping Weight lb (kg)*
Single-Sided	Double-Sided		
33552-X03	33551-X03	Side Panel Kit, 7 (2.1)	30 (13.6)
33552-X05	33551-X05	Side Panel Kit, 8 (2.4)	34 (25.4)
33552-X06	33551-X06	Side Panel Kit, 9 (2.7)	38 (17.2)

Note: X=Color; 7=Black and E=Glacier White.
*Shipping weight is for Double-Sided.

Part Number	Description Width in (mm)	Shipping Weight lb (kg)
33555-X01	PDU Bracket, 6 (150)	7 (3.2)
33555-X02	PDU Bracket, 8-15 (200 - 335)	9 (4.0)

Note: X=Color; 7=Black and E=Glacier White.

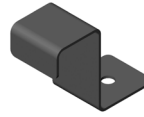
ACCESSORIES

Legacy Accessories Compatibility: For all Evolution® Vertical Cable Managers ordered prior to January 29, 2024, only legacy accessories are compatible. We strongly advise customers who have purchased these units before this date to procure and use legacy accessories for optimal performance and fit.



Cable Lashing Bar Kit

- Use up to 6 cable lashing bars (front/rear) in 6"W (150 mm) vertical cable managers and up to 10 cable lashing bars (front/rear) in 8"W (200 mm), 10"W (250 mm), 12"W (300 mm) and 15"W (380 mm) vertical cable managers
- Each kit includes (4) round .23" (5.7 mm) diameter x 20.6"L (524 mm) steel lashing bars and mounting hardware



Floor Bracket

Floor Bracket secures the base of the Evolution Vertical Cable Managers to the floor when located at the end of a row of equipment racks.

- Sold in packs of 12
- Order floor attachment hardware separately

Part Number	Description	Shipping Weight lb (kg)
35473-001	Cable Lashing Bar Kit	2 (0.9)

Color is Black.

Part Number	Description	Shipping Weight lb (kg)
35506-701	Floor Bracket, Pack of 12	3 (1.4)

Color is Black.



Cable Divider Bar Kit

Cable Divider Bar Kit provides tie points for cables inside Evolution Vertical Cable Managers and divides the interior of the cable manager to create multiple pathways for cables.

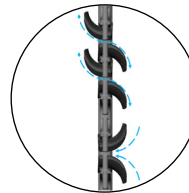
- Attaches to the Fixed Accessory panels inside vertical cable managers
- Each Cable Divider Bar is 5.75"H x 1"W x 20"L (146 mm x 25 mm x 510 mm)
- Use side-by-side to create multiple pathways in 10"W (250 mm) or wider cable managers
- Each kit includes four Cable Divider Bars and mounting hardware



Tool-Less Bend Radius Kit for Fiber Patch Cords

Tool-Less Bend Radius Kit for Fiber Patch Cords ensures proper bend radius support for fiber optic patch cords when transitioning through T-shaped cable guides. It snaps onto the finger manager without any tools, and can be used for new or retrofit applications.

- Provides proper bend radius support for fiber optic patch cords
- Tool-Less installation
- May be installed in upward or downward orientations on either side of a T-shaped cable guide
- Available in packs of 10 or 50



Part Number	Description	Shipping Weight lb (kg)
35503-701	Cable Divider Bar Kit	3 (1.4)

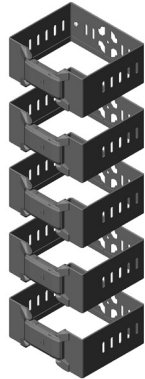
Color is Black.

Part Number	Description	Shipping Weight lb (kg)
32697-001	Tool-Less Bend Radius Kit for Fiber Patch Cords, Pack of 10	1 (0.5)
32697-002	Tool-Less Bend Radius Kit for Fiber Patch Cords, Pack of 50	3 (1.4)

Color is Black.

ACCESSORIES

Legacy Accessories Compatibility: For all Evolution® Vertical Cable Managers ordered prior to January 29, 2024, only legacy accessories are compatible. We strongly advise customers who have purchased these units before this date to procure and use legacy accessories for optimal performance and fit.



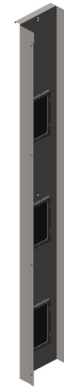
Cable Ring Kit

The Cable Ring Kit is designed for the Evolution Single-Sided Vertical Cable Manager. Creates a separate cable pathway for premise cables at the back of the Cable Manager.

- Match the kit to the width of the vertical cable manager; one kit per manager
- Attaches to the rear flanges of the vertical cable manager with the included hardware
- Rings are C-shaped, with a plastic latch that opens to the left, right or can be completely removed for easier access to cables
- plastic hinges and gate are black
- Each kit includes 5 rings



Single-Sided



Double-Sided

Full Height Mid-Panel Kits

The Full Height Mid-Panel Kits can be used with both the Evolution Double-Sided and Single-Sided Vertical Cable Managers. This kit manages airflow from the front to rear sections of the cable manager, for Hot/Cold aisle containment applications, by utilizing either brushes or grommets for cable pass-thru.

- Can be ordered with brushes or grommets
- Allows for cable pass-thru
- Isolates the mixture of cold & hot air
- Height & Width Specific
- Only available for 10"W or wider Cable Managers
- Single Set

Part Number	Description Width in (mm)	Shipping Weight lb (kg)
33502-X01	For 6 (150), Single-Sided Cable Manager	10 (4.5)
33502-X02	For 8 (200), Single-Sided Cable Manager	11(5.0)
33502-X03	For 10 (300), Single-Sided Cable Manager	12 (5.5)
33502-X04	For 12 (350), Single-Sided Cable Manager	13 (5.9)
33502-X05	For 15 (380), Single-Sided Cable Manager	15 (6.8)

Note: X=Color; 7=Black and E=Glacier White.

Part Number		Description Width / Height in (mm) / ft (M)	Shipping Weight lb (kg)*
Single-Sided	Double-Sided		
33545-X03	33544-X03	Mid-Panel Kit for 10 (300), 7 (2.1) Manager, Brush-Sealed	12 (5.5)
33545-X05	33544-X05	Mid-Panel Kit for 10 (300), 8 (2.4) Manager, Brush-Sealed	14 (6.4)
33545-X06	33544-X06	Mid-Panel Kit for 10 (300), 9 (2.7) Manager, Brush-Sealed	15 (6.8)
33545-X09	33544-X09	Mid-Panel Kit for 12 (350), 7 (2.1) Manager, Brush-Sealed	13 (5.9)
33545-X11	33544-X11	Mid-Panel Kit for 12 (350), 8 (2.4) Manager, Brush-Sealed	16 (7.3)
33545-X12	33544-X12	Mid-Panel Kit for 12 (350), 9 (2.7) Manager, Brush-Sealed	17 (7.7)
33545-X15	33544-X15	Mid-Panel Kit for 15 (380), 7 (2.1) Manager, Brush-Sealed	16 (7.3)
33545-X17	33544-X17	Mid-Panel Kit for 15 (380), 8 (2.4) Manager, Brush-Sealed	19 (8.6)
33545-X18	33544-X18	Mid-Panel Kit for 15 (380), 9 (2.7) Manager, Brush-Sealed	21 (9.5)
33545-X21	33544-X21	Mid-Panel Kit for 10 (300), 7 (2.1) Manager, Grommet-Sealed	12 (5.5)
33545-X23	33544-X23	Mid-Panel Kit for 10 (300), 8 (2.4) Manager, Grommet-Sealed	14 (6.4)
33545-X24	33544-X24	Mid-Panel Kit for 10 (300), 9 (2.7) Manager, Grommet-Sealed	15 (6.8)
33545-X27	33544-X27	Mid-Panel Kit for 12 (350), 7 (2.1) Manager, Grommet-Sealed	13 (5.9)
33545-X29	33544-X29	Mid-Panel Kit for 12 (350), 8 (2.4) Manager, Grommet-Sealed	16 (7.3)
33545-X30	33544-X30	Mid-Panel Kit for 12 (350), 9 (2.7) Manager, Grommet-Sealed	17 (7.7)
33545-X33	33544-X33	Mid-Panel Kit for 15 (380), 7 (2.1) Manager, Grommet-Sealed	16 (7.3)
33545-X35	33544-X35	Mid-Panel Kit for 15 (380), 8 (2.4) Manager, Grommet-Sealed	19 (8.6)
33545-X36	33544-X36	Mid-Panel Kit for 15 (380), 9 (2.7) Manager, Grommet-Sealed	21 (9.5)

Note: X=Color; 7=Black and E=Glacier White.

*Shipping weight is for Double-Sided Manager.

chatsworth.com

techsupport@chatsworth.com

800-834-4969



While every effort has been made to ensure the accuracy of all information, CPI does not accept liability for any errors or omissions and reserves the right to change information and descriptions of listed services and products.

©2024 Chatsworth Products, Inc. All rights reserved. Chatsworth Products, Click-Nut, CPI, CPI Passive Cooling, CUBE-IT, Secure Array, eConnect, Evolution, GlobalFrame, MegaFrame, QuadraRack, RMR, Saf-T-Grip, SeismicFrame, SlimFrame, TeraFrame, Motive, EuroFrame, Oberon, Velocity and ZetaFrame are federally registered trademarks of Chatsworth Products. H-Plane, Hi-Bar, In-Plane, M-Frame, NetPoint, Simply Efficient, Skybar, and Wi-Tile and are trademarks of Chatsworth Products. All other trademarks belong to their respective companies. rev. 9 01/24 MKT-60020-390